

2017 HUD

Change is in the Air

NWSSC
ServicePoint Training Information

What you need to know...

☑ October 1, 2017

- All Current and Active Clients
- All New Clients

☑ Data Elements Changes

- Project Descriptors
- Universal Data Elements
- Program Specific Data Elements – Common
- Program Specific Data Elements – By Program

☑ Pre-Housing Provider Workflow

☑ Release of Information (ROI)



What you need to know...

☑ General Changes Include:

- New numbering system
- Picklist differences throughout
- Changes in Data Collection Stages
- Minor wording changes
- Removed references to “Unaccompanied Youth” as term no longer in use

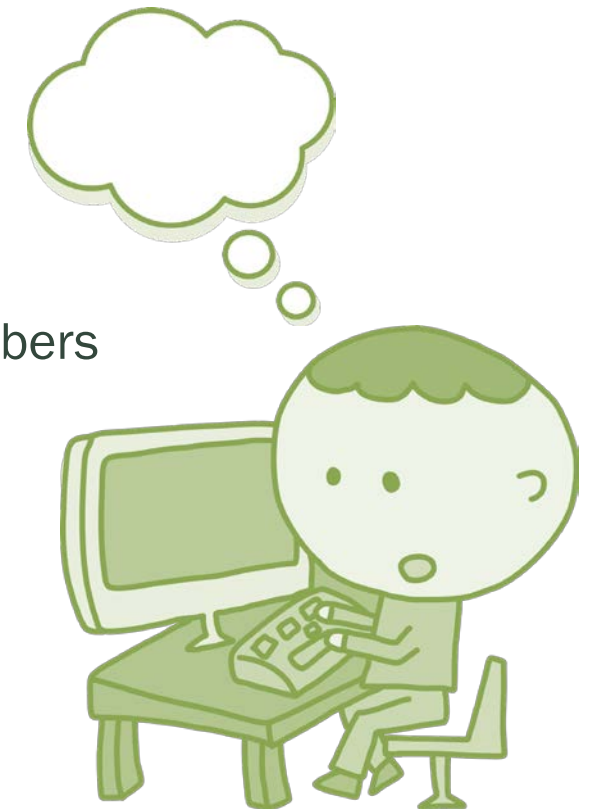
☑ Upgrade by 10/1/2017 to be compliant



What you need to know...

Data Collection Stages

- ☑ **Project Start date**
 - Replaces Project Entry Date
- ☑ **Occurrence Point/Update**
 - Is the interim review date
- ☑ **Annual Assessment**
 - HOH's Anniversary Date now applies to all household members
- ☑ **Project Exit date**
- ☑ **Post Exit**
 - ☑ Follow-up review



H U “D” - Day

October 1, 2017

Project Descriptors – Changes with your Administrators involvement

➤ 2.2 Project Identifiers – Addition of two new fields

Operating Year Start Date

Operating Year End Date

➤ 2.5 New Federal Funding Sources – Dropdown value changes

Retired VA Community Contract Residential Treatment Program
And Grant Per Diem

Added 6 new GPD Component Types

Renamed Community Contract Emergency Housing to
VA CRS Contract Residential Services

More Project Descriptors

- Project Descriptors** – Changes with your Administrators involvement
 - 2.7 Bed and Unit Inventory – associate each list with a CoC Code
 - New requirement to associate each Inventory Record with a CoC Code
 - Removal of Youth Bed Age Categories
 - 2.8 Additional Project Information – data used to complete HIC and future AHAR
 - Combines old fields 2.8 and 2.9 to a single field that will be used to help facilitate generation of HIC and AHAR data

What changes will you see

Universal Data Elements

- 3.6 Gender – wording changes to dropdown values
- 3.8 Disabling Condition collected at Project Start
- 3.10 Project Start – this replaces Project Entry
- 3.12 Destination – changes to dropdown values
- 3.15 Relationship to Head of Household – clarification
- 3.20 Housing Move in Date – New Element
 - Renamed/renumbered 4.17 Residential Move in Date*
- 3.917 A Living Situation – changes to dropdown values
- 3.917 B Living Situation – changes to dropdown values

What changes will you see

Program Specific Data Elements - Common

- 4.1 Housing Status - Retired
- 4.3 Non-Cash Benefits – Change in dropdown values
- 4.5-4.10 Disability Types – retired additional questions
- 4.12 Contact – change to location filed
- 4.17 Residential Move in Date – Retired and moved to UDE (3.20)

Program Specific Data Elements – By Program

- HOPWA
- PATH
- VA
- RHY

Workflow changes

☑ Pre-Housing Provider Workflow Change

- Project Start date and Housing Move in Date eliminate the need for a provider to track services before client moved into housing.
- Project start date is the date you accept client in the project
- Housing Move in Date is the date client moves into housing (and will be considered the 'placement' date)

☑ Release of Information (ROI)

- Added layer of client confidentiality
- How to transact an ROI:
(<https://www.portlandoregon.gov/phb/article/654051>)

Resources

NW Social Service Connections (NWSSC)

<https://www.portlandoregon.gov/phb/HMIS>

NW Social Service Connections (NWSSC) Guides & Help Sheets

<https://www.portlandoregon.gov/phb/74789>

HMIS Data Dictionary Resources - includes Data Manual

<https://www.hudexchange.info/resource/3824/hmis-data-dictionary/>

HMIS Guides and Tools

<https://www.hudexchange.info/hmis/guides/#coc-resources>

Thank You for reviewing!

Questions? Please contact your local administrator