

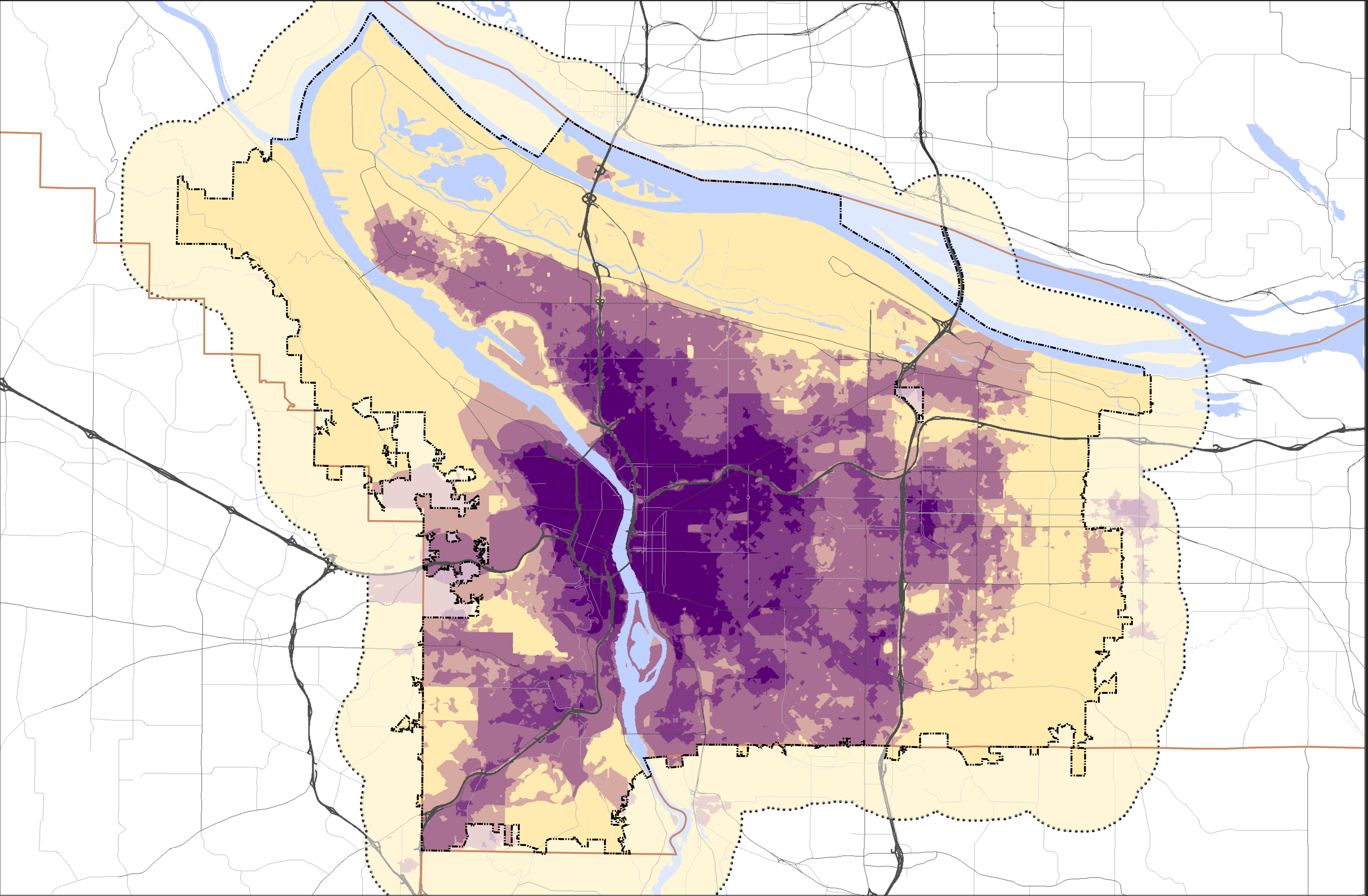
## Combined Indicators 2017

**Legend**

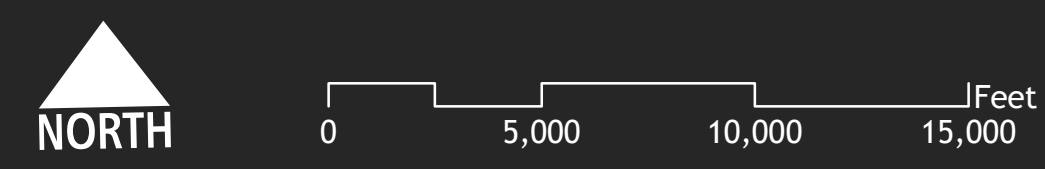
- City Boundary
- County Boundaries
- 1 Mile Data Collection Extent

**Opportunity Score**

- Low
- Medium
- High



The information on this map was derived from City of Portland GIS databases. Care was taken in the creation of this map but it is provided "as is". The City of Portland cannot accept any responsibility for error, omissions or positional accuracy.



## Portland Opportunity Area Mapping Methodology - 2017

Category	Weight	Indicator/Variable
<b>Childhood Education (1/5)</b>	<b>60%</b>	<b>Achievement Index Rating (Elementary, High Schools)</b> Scored 1-5 on Academic Achievement by Oregon Department of Education
	<b>20%</b>	<b>High School Graduation Rates</b> <73% = 1, 73.1-80% = 2, 80.1 – 85% = 3, 85.1 – 89% = 4, >89.1% = 5
	<b>20%</b>	<b>Proximity to Schools evaluated as Access &amp; Achievement</b> <u>Access:</u> 1/4 mile = 3 points; 1/2 mile = 2 points; 1 mile= 1 point <u>Achievement:</u> 1-5 ODE Achievement Score <u>Access + Achievement:</u> Combinations like, ¼ mile+ 5 achievement score = 8 pts,
<b>Employment (1/5)</b>	<b>55%</b>	<b>Density (by number &amp; size of firms) of higher-wage industries in 1-mile radius</b> Includes job sectors that pay Multnomah County self-sufficiency wage of \$73,563 for one adult with two children family
	<b>35%</b>	<b>Density (by number &amp; size of firms) of lower-wage industries in 1-mile radius</b> Includes job sectors that pay Multnomah County self-sufficiency wage of \$73,563 for one adult with two children family
	<b>10%</b>	<b>Proximity to Adult Education Resources</b> 1/4 mile = 3 points; 1/2 mile = 2 points; 1 mile = 1 point  <ul style="list-style-type: none"> <li>➤ Junior Colleges – 611210</li> <li>➤ Colleges, Universities &amp; Professional Schools – 611310</li> <li>➤ Business &amp; Secretarial Schools – 6114</li> <li>➤ Computer Training – 611420</li> <li>➤ Trade Schools/Cosmetology &amp; Barber Schools – 611511</li> <li>➤ Apprenticeship Training – 611513</li> <li>➤ Other Technical &amp; Trade Schools – 611519</li> </ul>
<b>Transportation (1/5)</b>	<b>70%</b>	<b>Proximity to Transit</b> 1/4 mile= 3 points; 1/2 mile= 2 points; 1 mile= 1point  <ul style="list-style-type: none"> <li>➤ Light Rail Stops &amp; Transit Centers (wt. X 5)</li> <li>➤ Frequent Bus Service &amp; Streetcar Stops (Trimet) (wt. X 4)</li> <li>➤ Regular Bus Service Stops (Trimet) (wt. X 3)</li> <li>➤ Weekday/Rush Hour Only Stops (Trimet) (wt. X 2)</li> <li>➤ Bike Lanes (Blvd/Lane/ Low Traffic Streets: PBOT Bike Plan (wt. X 1)</li> </ul>
	<b>20%</b>	<b>Density of Sidewalks</b>
	<b>10%</b>	<b>Density of Curb Cuts</b>
<b>Access to Family Wage Jobs (1/5)</b>  <b>**2013 Data**</b>	<b>100%</b>	<b>Number of family-wage jobs within 60 mts. (via mass transit)</b>  <ul style="list-style-type: none"> <li>➤ 486,742-646,529 (5 pts.)</li> <li>➤ 410,938-484,008 (4 pts.)</li> <li>➤ 315,446-409,601 (3 pts.)</li> <li>➤ 163,715-306,877 (2 pts.)</li> <li>➤ 162,194 or less (1 pt.)</li> </ul>
<b>Healthy Eating Active Living (HEAL) (1/5)</b>	<b>30%</b>	<b>Proximity to Parks/Natural Areas/Senior (District) Centers</b> 1/4 mile = 3 points; 1/2 mile = 2 points; 1 mile = 1 point
	<b>50%</b>	<b>Proximity to food sources</b> 1/4 mile = 3 points; 1/2 mile = 2 points; 1 mile = 1 point  <ul style="list-style-type: none"> <li>➤ Large Chain Grocery Stores (wt.X3)</li> <li>➤ Meal Centers (wt. X3)</li> <li>➤ Independent, Ethnic, Produce Stores (wt.X 2)</li> <li>➤ Farmer's Market (Seasonal) (wt. X 1)</li> <li>➤ Community Garden Locations (wt. X 1)</li> </ul>
	<b>20%</b>	<b>Proximity to Health Care Providers</b> 1/4 mile =3 points; 1/2 mile = 2 points; 1 mile= 1point  <ul style="list-style-type: none"> <li>➤ Multnomah County Health Clinics (wt. X 3)</li> <li>➤ Clinics/Providers accepting Oregon Health Plan (wt. X 2)</li> <li>➤ Hospitals with Emergency Rooms (wt. X 1)</li> </ul>

