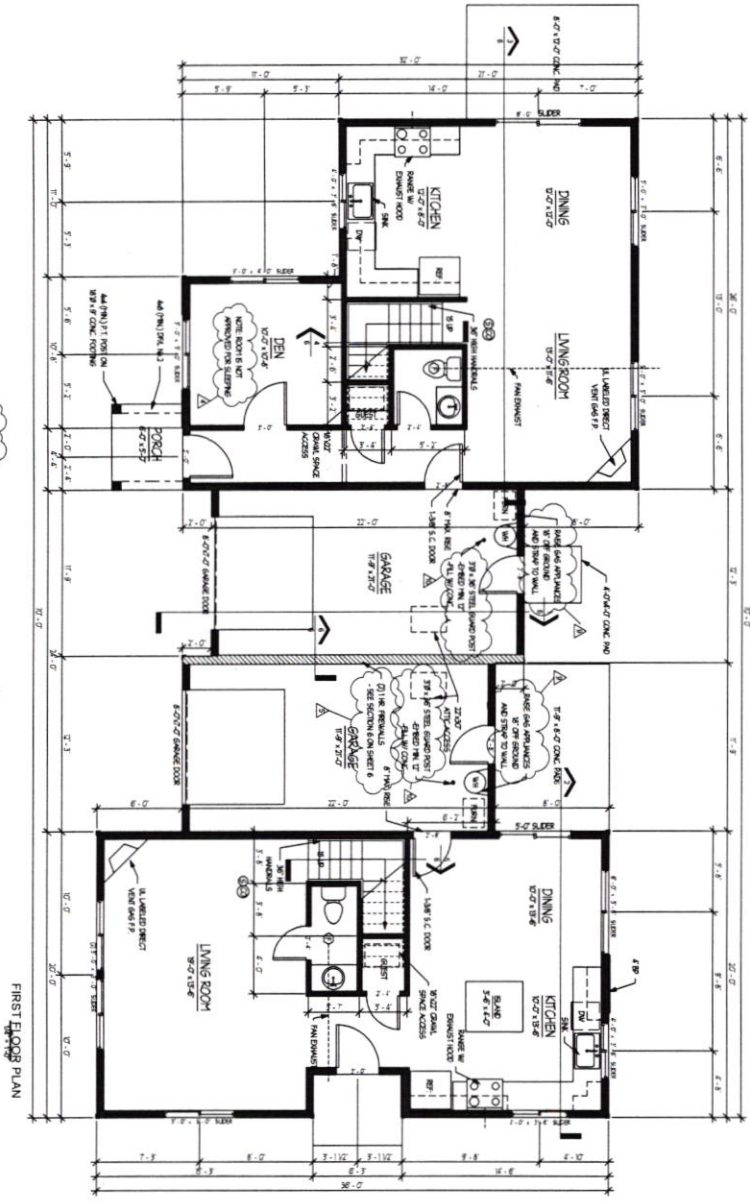


LINE	1st Floor (Other Lot 5)
WALL	1/2" - 1/4"
DOOR	1/2" - 1/4"
TRAIL	1/2" - 1/4"
TRAIL	1/2" - 1/4"



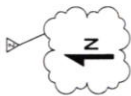
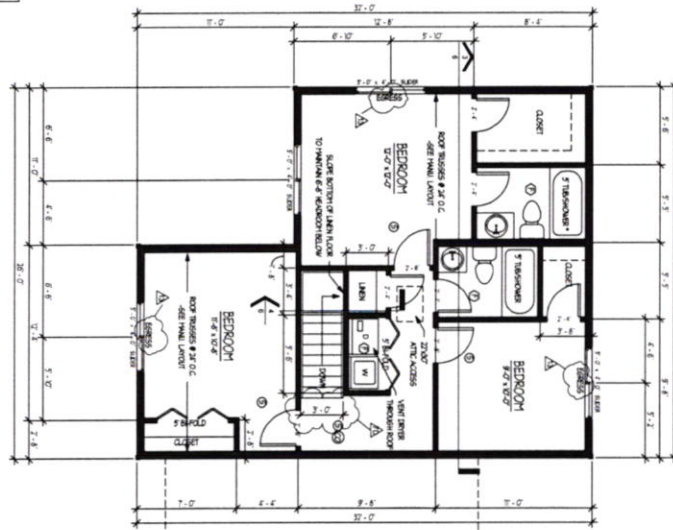
FIRST FLOOR PLAN

STONE CREEK BUILDING & DEVELOPMENT - PINE COURT LOTS 4 & 5	
FIRST FLOOR PLAN	
2	

All notes, arrangements, drawings and other set forth on this sheet are the original work product of, owned by and are the property of Builders Design Inc. All drawings, contracts, and use of this set work product is limited to a specific project for the project named herein, and for the construction of one building. Any use, reuse or disclosure of said plans, reproduction or project, ideas, design and/or arrangements, other than by Builders Design Inc. is strictly prohibited without the written permission of Builders Design Inc. Written documents on these drawings shall have precedence over verbal discussions, conversations and verbal work. Builders Design Inc. shall be responsible for all dimensions and conditions on the job and has sufficient to be included if any variations from the dimensions and conditions shown by these drawings. Shop details must be submitted to the office for approval before proceeding with fabrication. Dimensions in not indicated unless specified in work notes.

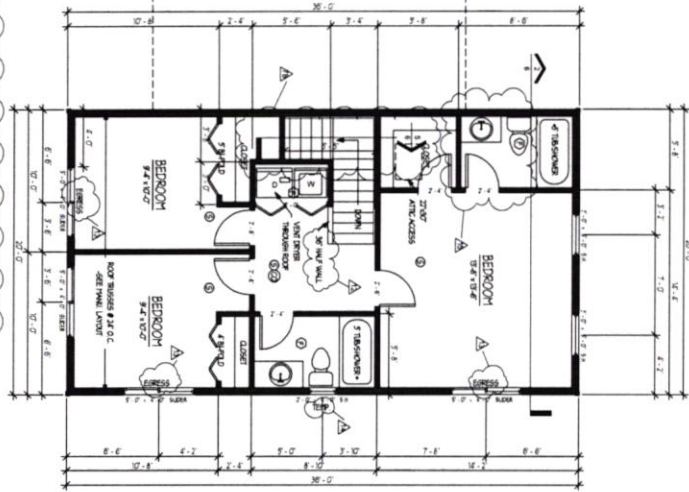
BUILDERS DESIGN INC.
 COMMERCIAL - RESIDENTIAL - REMODELING
 11125 NE WEIDLER ST. - PORTLAND, OR 97220
 PHONE: (503) 252-3453 - FAX: (503) 252-3454
 EMAIL: BUILDERSDESIGN@GMAIL.COM

	SLIDING GLASS
	POCKET DOOR
	SWINGING DOOR
	BI-FOLD DOOR
	NEW WALL
	FAN - WALL, NO CHIMNEY
	SMOKE DETECTOR



1st	2nd	3rd	4th
1st	2nd	3rd	4th
1st	2nd	3rd	4th
1st	2nd	3rd	4th

NOTE: ALL FANS & CLOTHES DRYERS ON 2nd FLOOR TO BE VENTED THROUGH 3RD FLOOR PLAN



STONE CREEK BUILDING & DEVELOPMENT - PINE COURT
LOTS 4 & 5

SECOND FLOOR PLAN

All ideas, arrangements, drawings and plans on this sheet are the original work product of, owned by and are the property of Builders Design Inc., an Oregon corporation, and use of these said work product is limited to a specified project for the purpose stated herein, and for the construction of that building. Any use, reuse or alteration of said plans, reproduction or project, ideas, design and/or arrangements, shall be done by Builders Design Inc., in whole or in part, without the written permission of Builders Design Inc. Written disclaimer on these drawings shall have precedence over verbal disclaimers, conversations and notes, and be responsible for all dimensions and conditions on the job and the office must be notified of any variations from the dimensions and conditions shown by these drawings. They should not be released to the office for approval before proceeding with development. Agreement is not included unless specified in work contract.

**BUILDERS
DESIGN INC.**
COMMERCIAL - RESIDENTIAL - REMODELING
1125 NE WEDLER ST. - PORTLAND, OR 97220
PHONE: (503) 252-3425 - FAX: (503) 252-3434
EMAIL: BUILDERSDESIGN@GMAIL.COM