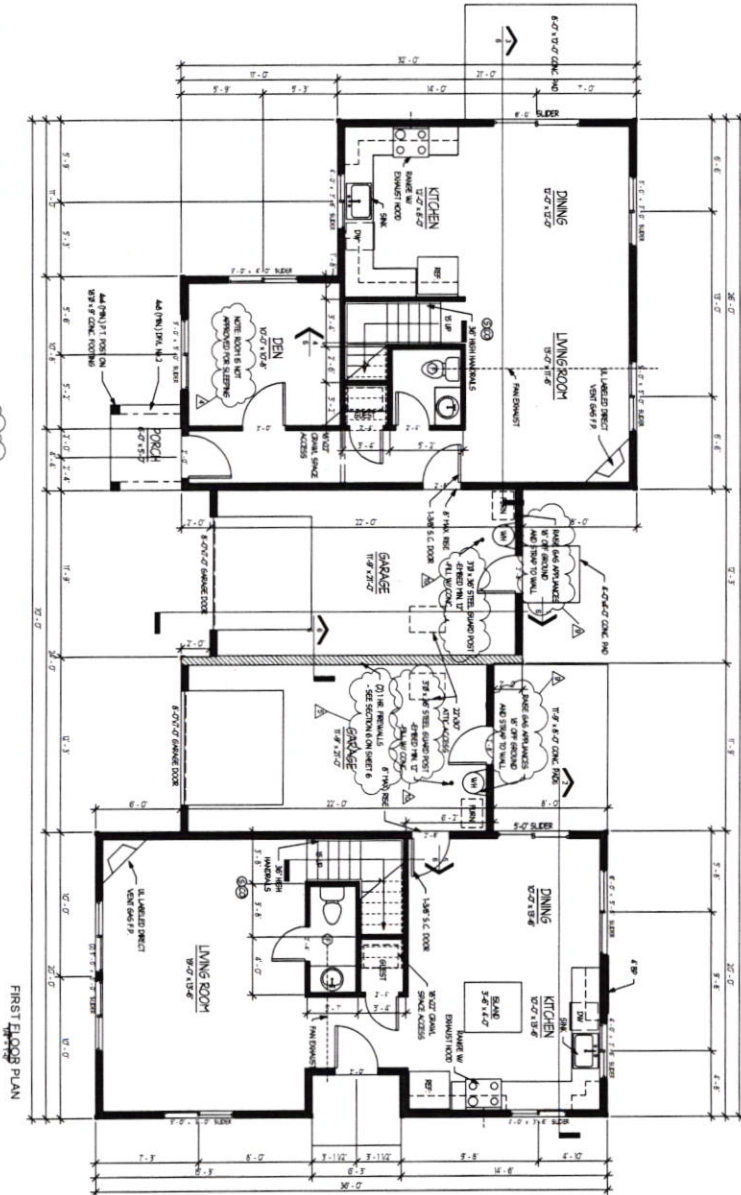


1st FLOOR	2nd FLOOR	3rd FLOOR	4th FLOOR	5th FLOOR	6th FLOOR
1st FLOOR	2nd FLOOR	3rd FLOOR	4th FLOOR	5th FLOOR	6th FLOOR



FIRST FLOOR PLAN

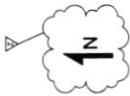
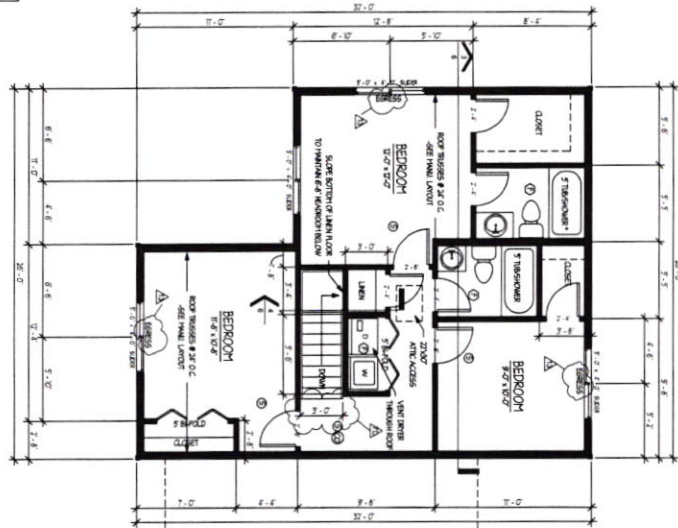
STONE CREEK BUILDING & DEVELOPMENT - PINE COURT
 LOTS 4 & 5
 FIRST FLOOR PLAN

Project Number	1000000
Scale	AS SHOWN
Date	11/20/08
Drawn By	DK
Checked By	DK
Scale	1/4" = 1'-0"

All lines, arrangements, drawings and plans set forth in this sheet are the original work product of, owned by and are the property of Builders Design Inc., an Oregon corporation, and use of this said work product is limited to a specified project for the personal owned homes, and for the construction of one building. Any use, reuse or disclosure of said plans, reproductions or project, items, design and / or arrangements, other than by Builders Design Inc., is strictly prohibited without the written permission of Builders Design Inc. Victims' disclaimer on these drawings shall have precedence over aural discussions. Contractors shall verify, and be responsible for all dimensions and conditions on the job and the official record of any register. Basis for dimensions and conditions shown by these drawings. They shall make it a condition to this office for approval before proceeding with construction. Discrepancy is not excluded unless specified in work orders.

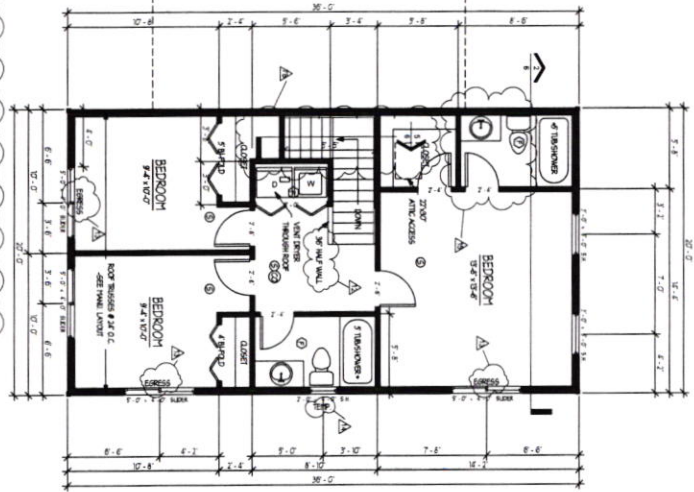
BUILDERS DESIGN INC.
 COMMERCIAL - RESIDENTIAL - REMODELING
 11125 NE WEIDLER ST. - PORTLAND, OR 97220
 PHONE: (503) 252-3453 - FAX: (503) 252-3454
 EMAIL: BUILDERSDESIGN@GMAIL.COM

	SLIDING GLASS
	POCKET DOOR
	SWINGING DOOR
	BI-FOLD DOOR
	FAN-MOUNTED REMOTE CONTROL SMOKE DETECTOR



UNIT	12' x 12' (12' x 12')
WALLS	4" x 8" (4" x 8")
CEILING	9' (9')
FLOOR	1.5" (1.5")

NOTE ALL FANS & CLOTHES DRYERS ON 2ND FLOOR TO BE VENTED THROUGH SECOND FLOOR PLAN



STONE CREEK BUILDING & DEVELOPMENT - PINE COURT
 LOTS 4 & 5
 SECOND FLOOR PLAN

3

1:1/4" = 1'-0"

DATE: 10/20/08
 DRAWN BY: KJ
 CHECKED BY: KJ
 PROJECT NO: 100000

All dimensions, arrangements, drawings and plans are the original work product of, owned by and are the property of Builders Design Inc. An Oregon corporation, and use of the said work product is limited to a specific project for the project named herein, and for the construction of one building. Any use, reuse or fabrication of said plans, reproductions or copies, ideas, designs and/or arrangements, other than by Builders Design Inc. is strictly prohibited without the written permission of Builders Design Inc. Written dimensions on these drawings shall have precedence over actual dimensions. Contractors shall verify, and be responsible for all dimensions and conditions on the job and the differences be noted of any variance from the measurements and conditions shown by these drawings. This shall not be construed to be a contract for approval, further providing with this drawing. This printed is not a contract when printed a work contract.

BUILDERS DESIGN INC
 COMMERCIAL - RESIDENTIAL - REMODELING
 2125 NE WEDLER ST. - PORTLAND, OR 97228
 PHONE: (503) 232-3453 - FAX: (503) 232-3454
 EMAIL: BUILDERSDESIGN@GMAIL.COM