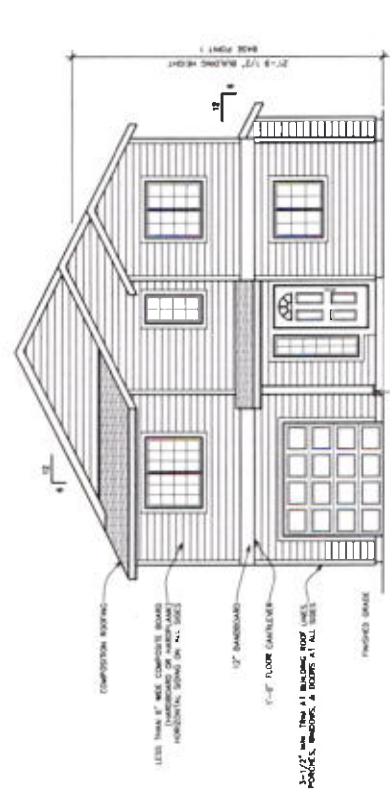
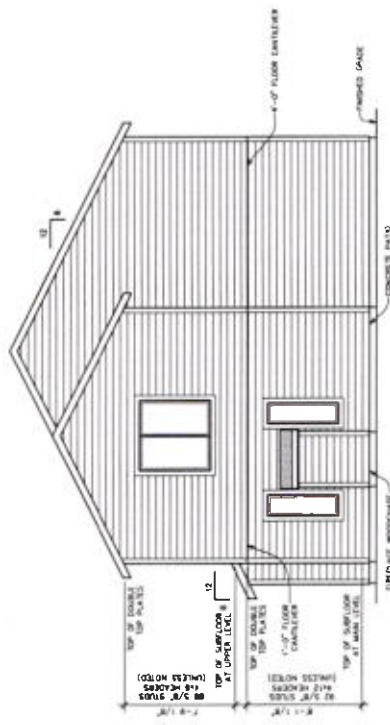


NOTE: ALL FINISHES SHALL BE AS SHOWN IN THE  
 ARCHITECTURAL SPECIFICATIONS. ALL FINISHES  
 SHALL BE IN ACCORDANCE WITH THE 2018  
 INTERNATIONAL RESIDENTIAL CODE BOOK (IRC).  
 ALL FINISHES SHALL BE IN ACCORDANCE WITH  
 THE 2018 INTERNATIONAL ENERGY CONSERVATION  
 CODE (IECC). ALL FINISHES SHALL BE IN  
 ACCORDANCE WITH THE 2018 INTERNATIONAL  
 PLUMBING AND MECHANICAL CODE (IPC/IMC).  
 ALL FINISHES SHALL BE IN ACCORDANCE WITH  
 THE 2018 INTERNATIONAL FIRE AND  
 SAFETY CODE (IFSC).

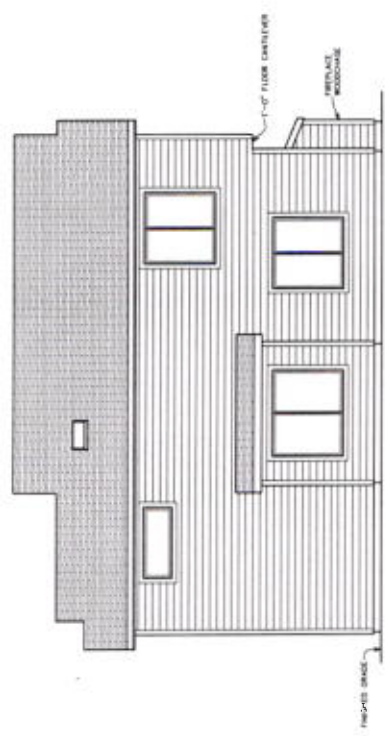


**FRONT ELEVATION**  
 SCALE: 1/4" = 1'-0"

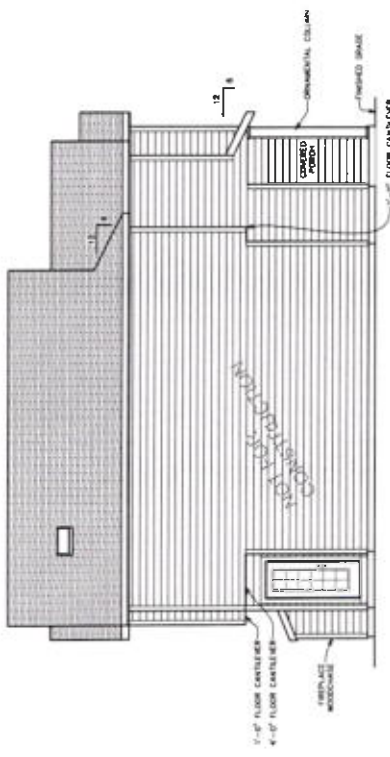


**REAR ELEVATION**  
 SCALE: 1/4" = 1'-0"

NOTE: ALL FINISHES SHALL BE AS SHOWN IN THE  
 ARCHITECTURAL SPECIFICATIONS. ALL FINISHES  
 SHALL BE IN ACCORDANCE WITH THE 2018  
 INTERNATIONAL RESIDENTIAL CODE BOOK (IRC).  
 ALL FINISHES SHALL BE IN ACCORDANCE WITH  
 THE 2018 INTERNATIONAL ENERGY CONSERVATION  
 CODE (IECC). ALL FINISHES SHALL BE IN  
 ACCORDANCE WITH THE 2018 INTERNATIONAL  
 PLUMBING AND MECHANICAL CODE (IPC/IMC).  
 ALL FINISHES SHALL BE IN ACCORDANCE WITH  
 THE 2018 INTERNATIONAL FIRE AND  
 SAFETY CODE (IFSC).



**RIGHT SIDE ELEVATION**  
 SCALE: 1/4" = 1'-0"



**LEFT SIDE ELEVATION**  
 SCALE: 1/4" = 1'-0"

