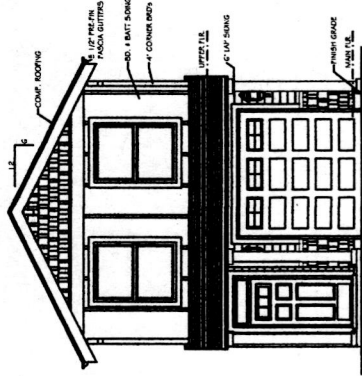


LEFT ELEVATION

SCALE: 1/4" = 1'-0"

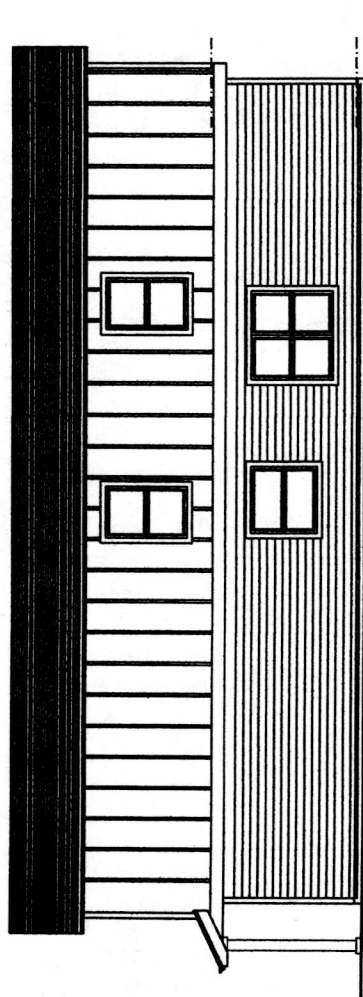


FRONT ELEVATION

SCALE: 1/4" = 1'-0"

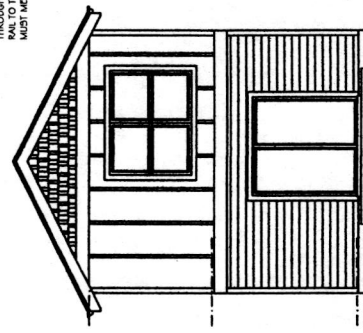
CITY OF PORTLAND INFO.  
 FRONT WALL WINDOW  
 AREA RECD. = 15%  
 FRONT WALL AREA = 348.9 S.F.  
 WINDOW AREA PROVIDED = 48.5 S.F.

ANY OPERABLE WINDOW WITH THE OPENING MORE THAN  
 72" OFF OF GRADE OR SURFACE BELOW, AND THE SILL IS  
 CLOSER TO THE FLOOR THAN 24", THEN THE WINDOW  
 MUST BE PROTECTED BY FIXED GLASS OR BAL UP TO THE  
 TOP OF THE WINDOW. THE PROTECTION SHALL BE SUCH  
 THAT DO NOT ALLOW ANY OBJECT WITH A 4" DIA. TO PASS  
 THROUGH THE OPENING. THE SPACE FROM THE TOP OF THE  
 WALL TO THE OPENING SECTION IN OPERABLE WINDOWS  
 MUST MEET THE CODE REQUIRED 3.7' TO 5' FT. OF OPENING.



RIGHT ELEVATION

SCALE: 1/4" = 1'-0"



REAR ELEVATION

SCALE: 1/4" = 1'-0"

**TROXEL'S HOME DESIGN**  
 ARCHITECT  
 DENNIS TROXEL  
 6500 158 3254  
 1222 NW 10TH ST  
 PORTLAND, OREGON 97209

SCALE: NOTED  
 DATE: 10-20-08  
 MAIN: 624 50 FT  
 UPPER: 696 50 FT  
 TOTAL: 1322 50 FT

PROJECT NUMBER: 2008-001  
 SHEET: 1  
 PLAN NUMBER: # 2295