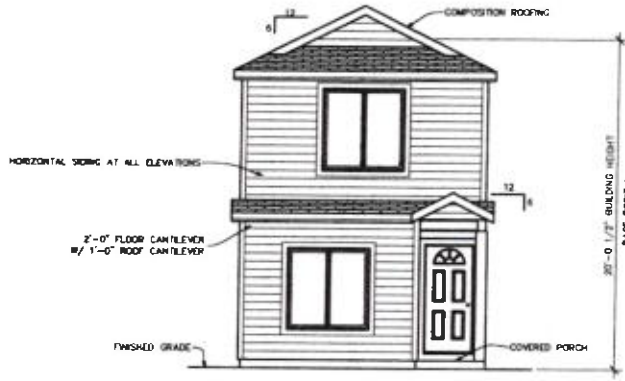
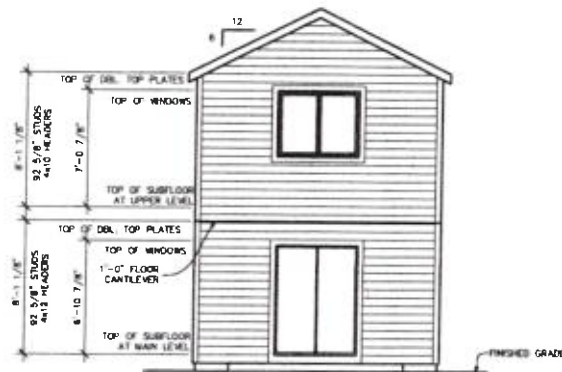


Unit 3



FRONT ELEVATION

SCALE: 1/4" = 1'-0"



REAR ELEVATION

SCALE: 1/4" = 1'-0"

CITY OF PORTLAND BASE ZONE DESIGN STANDARD
 STREET-FACING FACADE
 70.0 SQ. FT. WINDOW & DOOR AREA OF STREET
 FACING FACADE DIVIDED BY 252.7 SQ. FT. AREA
 OF STREET FACING FACADE = 27.7% WINDOW AND
 DOOR AREA OF STREET FACING FACADE (15% MIN.)

IMHD
 MASSIE HOME DESIGN

PHONE: 503.848.1100
 FAX: 503.848.1100

100 NW 20TH ST. STE. 001
 GRESHAM OREGON 97030

PROJECT ADDRESS:
 3817 NE 121ST AVE
 PORTLAND OREGON 97218
 THESE PLANS ARE FOR THE EXCLUSIVE USE OF THE
 CLIENT AND ARE NOT TO BE REPRODUCED OR
 TRANSMITTED IN ANY FORM OR BY ANY MEANS
 WITHOUT THE WRITTEN PERMISSION OF MASSIE HOME DESIGN.

PLAN 1489
FOR
GROUND BREAKERS CONST. & DEV.

DRAWN BY: BLM
 DATE: 9-3-17
 REV:
 JOB#: 17-036

1
 OF 11

STATEMENT ALTERNATE METHOD #1 (REF. ORS 451.800)
 ALL CPW (LINE OF 2008 FORBIC)
 WALL BRACING PROVIDED AS AN ALTERNATE METHOD TO THE 3044 (ORBC).

LATERAL DESIGN (ENVIRONMENTAL WALL BRACING)
 8"x8" BRACE PANEL, METHOD #1
 48" WIDTH WITH 4" O/C
 EDGES & 12" O/C FIELD, 3/4" MIN. SEALING

B.P. AT INTERIOR BRACING (SEE DETAIL AT P.10)

PP# PORTAL FRAME, METHOD #1
 22 1/2" MIN. WIDTH (SEE DETAIL P.1)

AMP# ALTERNATE BRACE PANEL, METHOD #1, 3/4" MIN. WIDTH (SEE DETAIL P.1)

NOTES:

1. VENT RANGE HOOD & BATH FANS TO OUTSIDE. BATH ROOMS WITH BATHING FACILITIES SHALL HAVE A MECHANICAL VENTILATION SYSTEM DESIGNED TO EXHAUST A MINIMUM OF 80 CFM INTERMITTENT OR 30 CFM CONTINUOUS CONTROLLED BY A DE-HUMIDITIFIER OR SIMILAR MEANS OF AUTOMATIC CONTROL.
2. PROVIDE 1/2" HIGH PLATFORM FOR WATER HEATER & FURNACE.
3. BRASS STRAPPING OF WATER HEATER IS REQUIRED PER SECTION 1407.2

- LEGEND:
- ◇ SURFACE MOUNTED MEASUREMENT
 - ◇ WALL MOUNTED MEASUREMENT
 - RECESSED MEASUREMENT
 - ◇ EXHAUST FAN VENTED TO EXTERIOR
 - ◇ CEILING MOUNTED duplex OUTLET
 - ◇ SPLIT-WIRED OUTLET, WIRE TO SWITCH
 - ◇ SINGLE-POLE SWITCH
 - ◇ THREE-WAY SWITCH
 - ◇ TELEPHONE OUTLET
 - ◇ TELEVISION OUTLET
 - ◇ 1/4" W/ BRIDGE ALARM / DETECTOR WITH BATTERY BACKUP/INTERCONNECT
 - ◇ 1/4" W/ BRIDGE ALARM / DETECTOR WITH BATTERY BACKUP IN EACH BEDROOM OR WORK IS FEET OUTSIDE OF EACH BEDROOM DOOR
 - ◇ STRUCTURAL BEAMS ARE INCLUDED CALCULATIONS FOR BEAR DATA
 - ◇ INTERIOR BEARING WALL
 - ◇ BEARING POINT LOCATOR, PROVIDE SOLD BEARING MIN. OF MEMBER WIDTH UNLESS NOTED

