

City of Portland
 Development Services
 Approved by
 Planning and zoning Division

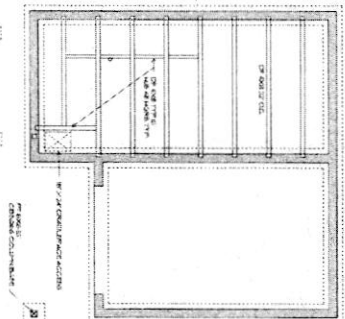
DATE: JUN 11 2011

5

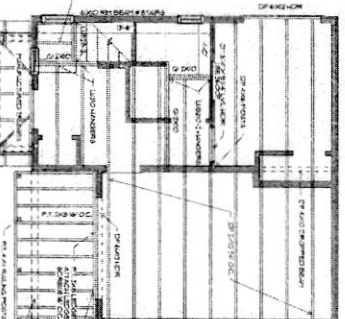
4

NOTE: ALL LOAD BEARING MEMBERS NOT SPECIFICALLY CALLED OUT TO BE CP-4X2
 NOTE: ALL WOOD STRUCTURAL MEMBERS TO BE DOUBLE END FINISH OR BETTER UNLESS NOTED OTHERWISE

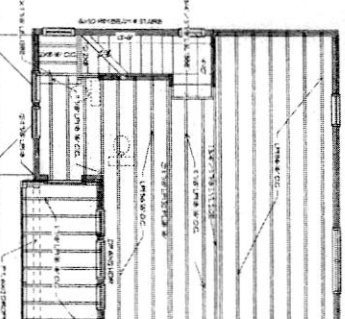
SEE SHEET 4 FOR LATERAL BRACING SPECIFICATIONS
 REFER TO ENGINEERING PACKET FOR ALL STRUCTURAL SPECIFICATIONS



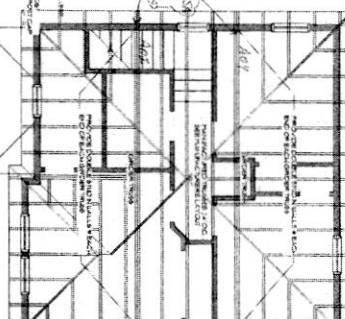
FOUNDATION
 SCALE: 1/4" = 1'-0"



FIRST FLOOR FRAMING
 SCALE: 1/4" = 1'-0"



SECOND FLOOR FRAMING
 SCALE: 1/4" = 1'-0"



ROOF FRAMING
 SCALE: 1/4" = 1'-0"

PROVIDE THE FOLLOWING REQUIREMENTS
 SHALL BE PROVIDED ABOVE GRADE AND
 SHALL BE PROVIDED BELOW GRADE FOR
 ALL EXPOSED WOOD SURFACES
 1. ALL EXPOSED WOOD SURFACES SHALL BE
 TREATED WITH A MINIMUM OF TWO COATS
 OF AN ACQUITY-RESISTANT PRESERVATIVE
 (AR-P) SUCH AS PENNY PENNYWOOD
 OR AN EQUIVALENT PRODUCT.
 2. ALL EXPOSED WOOD SURFACES SHALL BE
 TREATED WITH A MINIMUM OF TWO COATS
 OF AN ACQUITY-RESISTANT PRESERVATIVE
 (AR-P) SUCH AS PENNY PENNYWOOD
 OR AN EQUIVALENT PRODUCT.
 3. ALL EXPOSED WOOD SURFACES SHALL BE
 TREATED WITH A MINIMUM OF TWO COATS
 OF AN ACQUITY-RESISTANT PRESERVATIVE
 (AR-P) SUCH AS PENNY PENNYWOOD
 OR AN EQUIVALENT PRODUCT.

ADDITIONAL FEATURES
 1. ALL EXPOSED WOOD SURFACES SHALL BE
 TREATED WITH A MINIMUM OF TWO COATS
 OF AN ACQUITY-RESISTANT PRESERVATIVE
 (AR-P) SUCH AS PENNY PENNYWOOD
 OR AN EQUIVALENT PRODUCT.
 2. ALL EXPOSED WOOD SURFACES SHALL BE
 TREATED WITH A MINIMUM OF TWO COATS
 OF AN ACQUITY-RESISTANT PRESERVATIVE
 (AR-P) SUCH AS PENNY PENNYWOOD
 OR AN EQUIVALENT PRODUCT.
 3. ALL EXPOSED WOOD SURFACES SHALL BE
 TREATED WITH A MINIMUM OF TWO COATS
 OF AN ACQUITY-RESISTANT PRESERVATIVE
 (AR-P) SUCH AS PENNY PENNYWOOD
 OR AN EQUIVALENT PRODUCT.

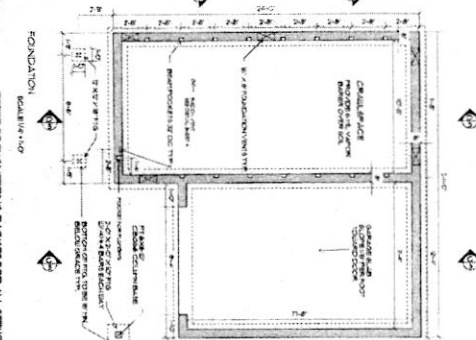
UNITS 1, 7, 13
 CROSSCREEK MEADOWS
 24 X 24 VERSION I

NOTE: ALL DRAIN AND DOWNSPOUTS AS A PART OF THE ROOFING SYSTEM SHALL BE INSTALLED TO ALLOW FOR INTERIOR FINISHES FOR MANUFACTURED COMPONENTS SUCH AS TUBS AND SHOWERS. MAKE TO MANUFACTURER'S SPECIFICATIONS. MAKEFIELD ADJUSTMENTS AS NECESSARY.

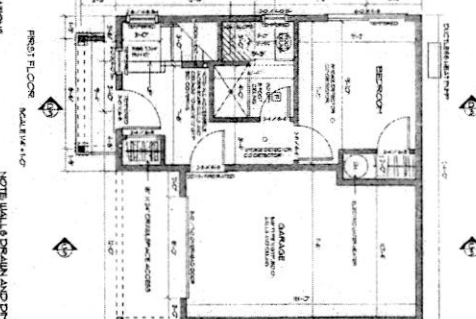
UNDOUBT
 1. ALL EXPOSED WOOD SURFACES SHALL BE
 TREATED WITH A MINIMUM OF TWO COATS
 OF AN ACQUITY-RESISTANT PRESERVATIVE
 (AR-P) SUCH AS PENNY PENNYWOOD
 OR AN EQUIVALENT PRODUCT.
 2. ALL EXPOSED WOOD SURFACES SHALL BE
 TREATED WITH A MINIMUM OF TWO COATS
 OF AN ACQUITY-RESISTANT PRESERVATIVE
 (AR-P) SUCH AS PENNY PENNYWOOD
 OR AN EQUIVALENT PRODUCT.
 3. ALL EXPOSED WOOD SURFACES SHALL BE
 TREATED WITH A MINIMUM OF TWO COATS
 OF AN ACQUITY-RESISTANT PRESERVATIVE
 (AR-P) SUCH AS PENNY PENNYWOOD
 OR AN EQUIVALENT PRODUCT.

UNDOUBT
 1. ALL EXPOSED WOOD SURFACES SHALL BE
 TREATED WITH A MINIMUM OF TWO COATS
 OF AN ACQUITY-RESISTANT PRESERVATIVE
 (AR-P) SUCH AS PENNY PENNYWOOD
 OR AN EQUIVALENT PRODUCT.
 2. ALL EXPOSED WOOD SURFACES SHALL BE
 TREATED WITH A MINIMUM OF TWO COATS
 OF AN ACQUITY-RESISTANT PRESERVATIVE
 (AR-P) SUCH AS PENNY PENNYWOOD
 OR AN EQUIVALENT PRODUCT.
 3. ALL EXPOSED WOOD SURFACES SHALL BE
 TREATED WITH A MINIMUM OF TWO COATS
 OF AN ACQUITY-RESISTANT PRESERVATIVE
 (AR-P) SUCH AS PENNY PENNYWOOD
 OR AN EQUIVALENT PRODUCT.

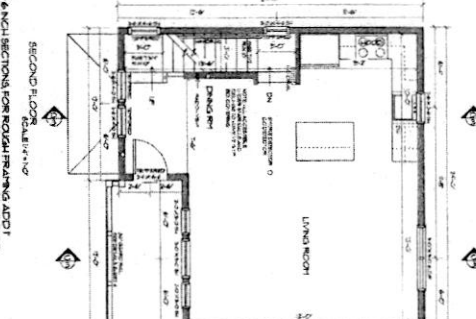
UNDOUBT
 1. ALL EXPOSED WOOD SURFACES SHALL BE
 TREATED WITH A MINIMUM OF TWO COATS
 OF AN ACQUITY-RESISTANT PRESERVATIVE
 (AR-P) SUCH AS PENNY PENNYWOOD
 OR AN EQUIVALENT PRODUCT.
 2. ALL EXPOSED WOOD SURFACES SHALL BE
 TREATED WITH A MINIMUM OF TWO COATS
 OF AN ACQUITY-RESISTANT PRESERVATIVE
 (AR-P) SUCH AS PENNY PENNYWOOD
 OR AN EQUIVALENT PRODUCT.
 3. ALL EXPOSED WOOD SURFACES SHALL BE
 TREATED WITH A MINIMUM OF TWO COATS
 OF AN ACQUITY-RESISTANT PRESERVATIVE
 (AR-P) SUCH AS PENNY PENNYWOOD
 OR AN EQUIVALENT PRODUCT.



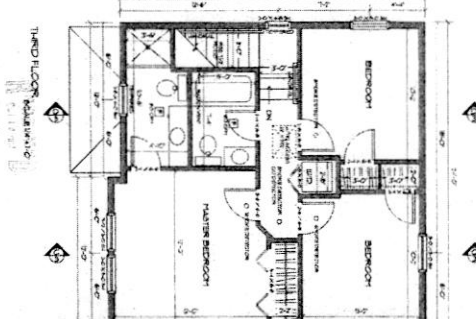
FOUNDATION
 SCALE: 1/4" = 1'-0"



FIRST FLOOR
 SCALE: 1/4" = 1'-0"



SECOND FLOOR
 SCALE: 1/4" = 1'-0"



THIRD FLOOR
 SCALE: 1/4" = 1'-0"

UNITS 1, 7, 13
 CROSSCREEK MEADOWS
 24 X 24 VERSION I

BLK 2

**PLANS AND FRAMING PLANS
 GARAGE RIGHT REVISED 14 OCT 2017**

4

**FLASHBACK DESIGN
 PORTLAND, OR 503.286.6288**