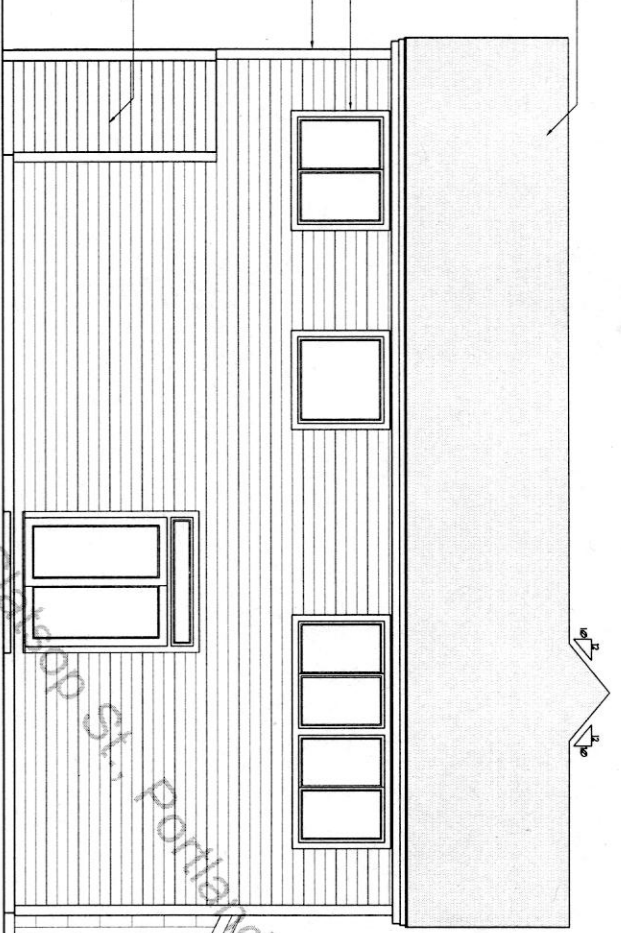


TO RIDGE
27'-4 5/8"
TO TOP PLATE
48'-2 1/4"
TO WINDOW NO.
46'-3 1/8"
1/4" SIPCOU SHEATH (OPT.)
3/4" CORNER BOARD, TYP.

TO SHUTTER
48'-1 1/8"
TO TOP PLATE
48'-1 1/8"
TO WINDOW NO.
47'-8 1/2"
TO SHUTTER
0'-0"

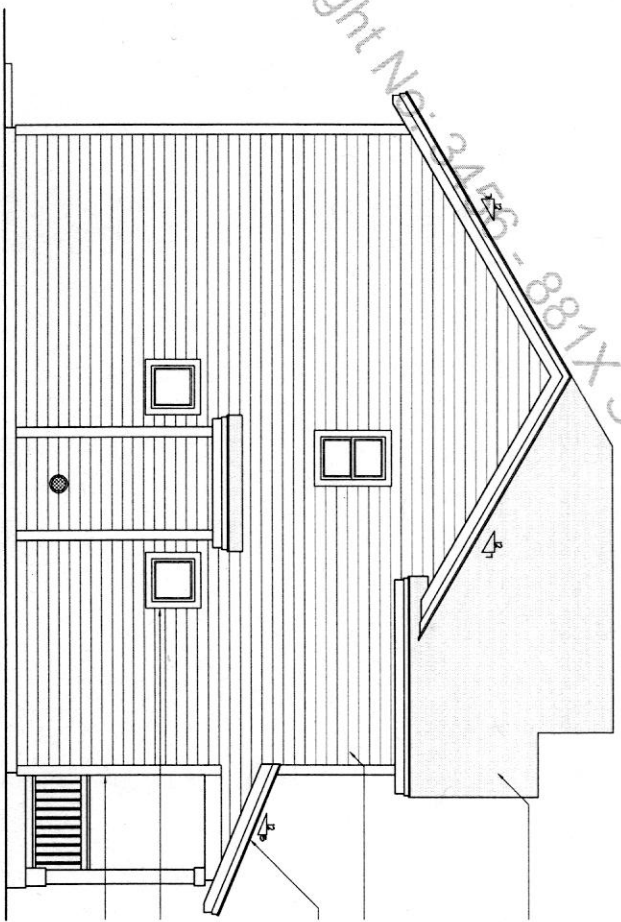


REAR ELEVATION
SCALE: 1/4"=1'-0"

REVERSE
THIS DRAWING HAS BEEN
FULLY REVERSED
PLEASE VERIFY
ORIENTATION

TO RIDGE
25'-5 1/8"
TO TOP PLATE
48'-2 1/4"
TO WINDOW NO.
46'-3 1/8"
1/4" SIPCOU SHEATH (OPT.)
3/4" CORNER BOARD, TYP.

TO SHUTTER
48'-1 1/8"
TO TOP PLATE
48'-1 1/8"
TO WINDOW NO.
47'-8 1/2"
TO SHUTTER
0'-0"



LEFT ELEVATION
SCALE: 1/4"=1'-0"

FISH CONSTRUCTION 881X S.E. CLATSOP ST.

ADAMS B

PLAN NUMBER 110117B 1,655 TOTAL SQUARE FEET

16865 Boones Ferry Road, Suite 103, Lake Oswego, Oregon 97035
Tel: (503) 624 0555 - Fax: (503) 624 0155
www.suntelhomesteadesign.com

THIS PLAN HAS BEEN REVISIONED FOR THE CONSTRUCTION OF ONE BUILDING ONLY. UNAUTHORIZED USE OR COPYING OF THE INFORMATION CONTAINED HEREIN WITHOUT THE WRITTEN PERMISSION OF SUNTEL DESIGN, INC. IS STRICTLY PROHIBITED. THE CONTRACTOR SHALL BE RESPONSIBLE FOR VERIFYING ALL DIMENSIONS AND CONDITIONS OF THE SITE PRIOR TO CONSTRUCTION. SUNTEL DESIGN, INC. IS NOT RESPONSIBLE FOR ANY ERRORS OR OMISSIONS IN THIS DRAWING. THE CONTRACTOR SHALL BE RESPONSIBLE FOR OBTAINING ALL NECESSARY PERMITS AND APPROVALS FROM THE LOCAL AUTHORITIES. SUNTEL DESIGN, INC. IS NOT RESPONSIBLE FOR ANY DELAYS OR COST INCREASES DUE TO CHANGES IN MATERIALS OR LABOR COSTS. SUNTEL DESIGN, INC. IS NOT RESPONSIBLE FOR ANY DAMAGES TO PERSONS OR PROPERTY CAUSED BY THE CONSTRUCTION OF THIS BUILDING.

JOB NAME: TRACT 1 SE CLATSOP ST.
DATE: 1/20/08
SCALE: SA

2