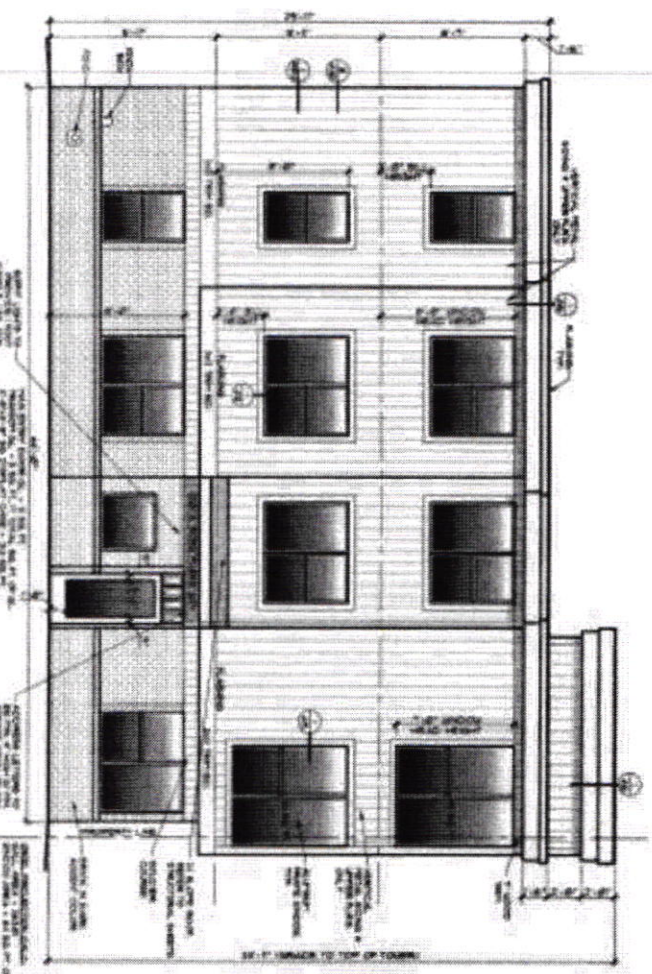


1801 N. ROSA PARKS FACADE



BUILDING CODE SUMMARY

1. ALL WORK SHALL BE IN ACCORDANCE WITH THE 2018 INTERNATIONAL RESIDENTIAL CODE BOOK (IRC) AND THE 2018 INTERNATIONAL MECHANICAL AND PLUMBING CODE (IMC) AS APPLICABLE.

2. ALL WORK SHALL BE IN ACCORDANCE WITH THE 2018 INTERNATIONAL BUILDING CODE (IBC) AS APPLICABLE.

3. ALL WORK SHALL BE IN ACCORDANCE WITH THE 2018 INTERNATIONAL FIRE AND SAFETY CODE (IFSC) AS APPLICABLE.

4. ALL WORK SHALL BE IN ACCORDANCE WITH THE 2018 INTERNATIONAL ENERGY EFFICIENCY CODE (IECC) AS APPLICABLE.

5. ALL WORK SHALL BE IN ACCORDANCE WITH THE 2018 INTERNATIONAL SMOKE AND ALARM CODE (ISAC) AS APPLICABLE.

6. ALL WORK SHALL BE IN ACCORDANCE WITH THE 2018 INTERNATIONAL SIGN CODE (ISC) AS APPLICABLE.

7. ALL WORK SHALL BE IN ACCORDANCE WITH THE 2018 INTERNATIONAL SAFETY HAZARD INVESTIGATION CODE (ISHIC) AS APPLICABLE.

8. ALL WORK SHALL BE IN ACCORDANCE WITH THE 2018 INTERNATIONAL CONSTRUCTION CODE (ICC) AS APPLICABLE.

9. ALL WORK SHALL BE IN ACCORDANCE WITH THE 2018 INTERNATIONAL ELECTRICAL CODE (IEC) AS APPLICABLE.

10. ALL WORK SHALL BE IN ACCORDANCE WITH THE 2018 INTERNATIONAL GAS CODE (IGC) AS APPLICABLE.

11. ALL WORK SHALL BE IN ACCORDANCE WITH THE 2018 INTERNATIONAL PIPELINE CODE (IPC) AS APPLICABLE.

12. ALL WORK SHALL BE IN ACCORDANCE WITH THE 2018 INTERNATIONAL RAILROAD CODE (IRC) AS APPLICABLE.

13. ALL WORK SHALL BE IN ACCORDANCE WITH THE 2018 INTERNATIONAL TRANSPORTATION CODE (ITC) AS APPLICABLE.

14. ALL WORK SHALL BE IN ACCORDANCE WITH THE 2018 INTERNATIONAL WAREHOUSE AND DISTRIBUTION CODE (IWDC) AS APPLICABLE.

15. ALL WORK SHALL BE IN ACCORDANCE WITH THE 2018 INTERNATIONAL WOOD PRESERVATION CODE (IWP) AS APPLICABLE.

16. ALL WORK SHALL BE IN ACCORDANCE WITH THE 2018 INTERNATIONAL ZONING CODE (IZC) AS APPLICABLE.

17. ALL WORK SHALL BE IN ACCORDANCE WITH THE 2018 INTERNATIONAL ACCESSIBILITY STANDARDS FOR BUILDINGS AND PUBLIC TRANSPORTATION (ASB) AS APPLICABLE.

18. ALL WORK SHALL BE IN ACCORDANCE WITH THE 2018 INTERNATIONAL STANDARDS FOR ACCESSIBLE AND USABLE BUILDINGS (IUA) AS APPLICABLE.

19. ALL WORK SHALL BE IN ACCORDANCE WITH THE 2018 INTERNATIONAL STANDARDS FOR ACCESSIBLE AND USABLE PUBLIC TRANSPORTATION (IUP) AS APPLICABLE.

20. ALL WORK SHALL BE IN ACCORDANCE WITH THE 2018 INTERNATIONAL STANDARDS FOR ACCESSIBLE AND USABLE PUBLIC TRANSPORTATION (IUP) AS APPLICABLE.

ENERGY NOTES

1. ALL WORK SHALL BE IN ACCORDANCE WITH THE 2018 INTERNATIONAL ENERGY EFFICIENCY CODE (IECC) AS APPLICABLE.

2. ALL WORK SHALL BE IN ACCORDANCE WITH THE 2018 INTERNATIONAL ENERGY EFFICIENCY CODE (IECC) AS APPLICABLE.

3. ALL WORK SHALL BE IN ACCORDANCE WITH THE 2018 INTERNATIONAL ENERGY EFFICIENCY CODE (IECC) AS APPLICABLE.

4. ALL WORK SHALL BE IN ACCORDANCE WITH THE 2018 INTERNATIONAL ENERGY EFFICIENCY CODE (IECC) AS APPLICABLE.

5. ALL WORK SHALL BE IN ACCORDANCE WITH THE 2018 INTERNATIONAL ENERGY EFFICIENCY CODE (IECC) AS APPLICABLE.

6. ALL WORK SHALL BE IN ACCORDANCE WITH THE 2018 INTERNATIONAL ENERGY EFFICIENCY CODE (IECC) AS APPLICABLE.

7. ALL WORK SHALL BE IN ACCORDANCE WITH THE 2018 INTERNATIONAL ENERGY EFFICIENCY CODE (IECC) AS APPLICABLE.

8. ALL WORK SHALL BE IN ACCORDANCE WITH THE 2018 INTERNATIONAL ENERGY EFFICIENCY CODE (IECC) AS APPLICABLE.

9. ALL WORK SHALL BE IN ACCORDANCE WITH THE 2018 INTERNATIONAL ENERGY EFFICIENCY CODE (IECC) AS APPLICABLE.

10. ALL WORK SHALL BE IN ACCORDANCE WITH THE 2018 INTERNATIONAL ENERGY EFFICIENCY CODE (IECC) AS APPLICABLE.

1. ALL WORK SHALL BE IN ACCORDANCE WITH THE 2018 INTERNATIONAL ENERGY EFFICIENCY CODE (IECC) AS APPLICABLE.

2. ALL WORK SHALL BE IN ACCORDANCE WITH THE 2018 INTERNATIONAL ENERGY EFFICIENCY CODE (IECC) AS APPLICABLE.

3. ALL WORK SHALL BE IN ACCORDANCE WITH THE 2018 INTERNATIONAL ENERGY EFFICIENCY CODE (IECC) AS APPLICABLE.

4. ALL WORK SHALL BE IN ACCORDANCE WITH THE 2018 INTERNATIONAL ENERGY EFFICIENCY CODE (IECC) AS APPLICABLE.

5. ALL WORK SHALL BE IN ACCORDANCE WITH THE 2018 INTERNATIONAL ENERGY EFFICIENCY CODE (IECC) AS APPLICABLE.

6. ALL WORK SHALL BE IN ACCORDANCE WITH THE 2018 INTERNATIONAL ENERGY EFFICIENCY CODE (IECC) AS APPLICABLE.

7. ALL WORK SHALL BE IN ACCORDANCE WITH THE 2018 INTERNATIONAL ENERGY EFFICIENCY CODE (IECC) AS APPLICABLE.

8. ALL WORK SHALL BE IN ACCORDANCE WITH THE 2018 INTERNATIONAL ENERGY EFFICIENCY CODE (IECC) AS APPLICABLE.

9. ALL WORK SHALL BE IN ACCORDANCE WITH THE 2018 INTERNATIONAL ENERGY EFFICIENCY CODE (IECC) AS APPLICABLE.

10. ALL WORK SHALL BE IN ACCORDANCE WITH THE 2018 INTERNATIONAL ENERGY EFFICIENCY CODE (IECC) AS APPLICABLE.

11. ALL WORK SHALL BE IN ACCORDANCE WITH THE 2018 INTERNATIONAL ENERGY EFFICIENCY CODE (IECC) AS APPLICABLE.

12. ALL WORK SHALL BE IN ACCORDANCE WITH THE 2018 INTERNATIONAL ENERGY EFFICIENCY CODE (IECC) AS APPLICABLE.

13. ALL WORK SHALL BE IN ACCORDANCE WITH THE 2018 INTERNATIONAL ENERGY EFFICIENCY CODE (IECC) AS APPLICABLE.

14. ALL WORK SHALL BE IN ACCORDANCE WITH THE 2018 INTERNATIONAL ENERGY EFFICIENCY CODE (IECC) AS APPLICABLE.

15. ALL WORK SHALL BE IN ACCORDANCE WITH THE 2018 INTERNATIONAL ENERGY EFFICIENCY CODE (IECC) AS APPLICABLE.

16. ALL WORK SHALL BE IN ACCORDANCE WITH THE 2018 INTERNATIONAL ENERGY EFFICIENCY CODE (IECC) AS APPLICABLE.

17. ALL WORK SHALL BE IN ACCORDANCE WITH THE 2018 INTERNATIONAL ENERGY EFFICIENCY CODE (IECC) AS APPLICABLE.

18. ALL WORK SHALL BE IN ACCORDANCE WITH THE 2018 INTERNATIONAL ENERGY EFFICIENCY CODE (IECC) AS APPLICABLE.

19. ALL WORK SHALL BE IN ACCORDANCE WITH THE 2018 INTERNATIONAL ENERGY EFFICIENCY CODE (IECC) AS APPLICABLE.

20. ALL WORK SHALL BE IN ACCORDANCE WITH THE 2018 INTERNATIONAL ENERGY EFFICIENCY CODE (IECC) AS APPLICABLE.

**1801 N. ROSA PARKS WAY APARTMENTS
PORTLAND, OREGON**

A1

ARCHITECTURAL
INCORPORATED
1801 N. ROSA PARKS WAY
PORTLAND, OREGON
97208
TEL: 503.251.1111
WWW.A1ARCHITECTURE.COM

