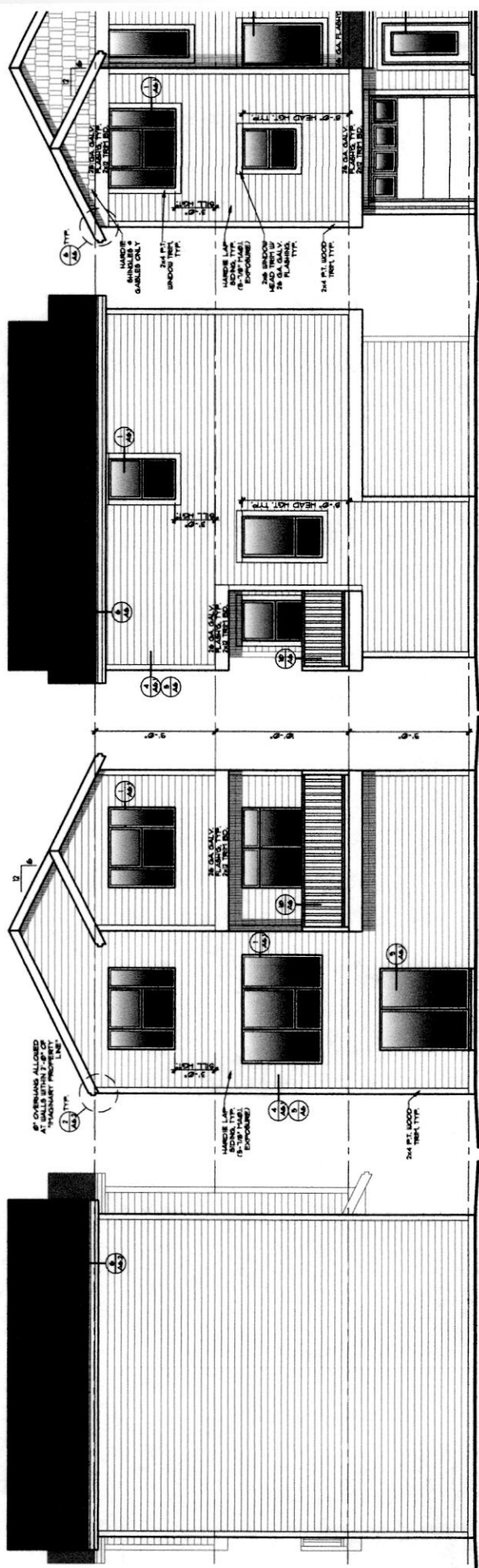


UNIT 1 TYPE A  
EAST ELEVATION  
SCALE: 1/4" = 1'-0"

UNIT 1 TYPE A  
NORTH ELEVATION  
SCALE: 1/4" = 1'-0"

UNIT 1 TYPE A  
WEST ELEVATION  
SCALE: 1/4" = 1'-0"

UNIT 1 TYPE A  
SOUTH ELEVATION  
SCALE: 1/4" = 1'-0"



UNIT 2 TYPE B  
EAST ELEVATION  
SCALE: 1/4" = 1'-0"

UNIT 2 TYPE B  
NORTH ELEVATION  
SCALE: 1/4" = 1'-0"

UNIT 2 TYPE B  
WEST ELEVATION  
SCALE: 1/4" = 1'-0"

UNIT 2 TYPE B  
SOUTH ELEVATION  
SCALE: 1/4" = 1'-0"