

# DISCOVERY PARK CONDOS

1155 NE 106th Ave  
Portland, OR 97220

Offered at \$410,000-  
\$439,000



## MAIN FEATURES

- 3 Bedroom/3 Bath
- 1427 Square Feet
- Luxury Vinyl Flooring
- Walk In Closet
- Stainless Steel Appliances
- Deck

## ABOUT THE PROPERTY

Buyer's income to qualify for tax abatement/SDC waivers. Great program and LOW property taxes for 10 yrs for qualifying buyers! Gorgeous new construction detached condo! 3 bd, 3 bath with over 1400 sq ft! Light and bright living room with gas fireplace. Formal dining room and gorgeous high end island kitchen with stainless steel appliances. Large master suite w/ covered ceilings, walk-in closet, huge soaking tub and glass shower. Attached garage and slider to back patio.

RMLS #: 20094883    TAXES: TBD



**Rosemary Chitala**

503-319-1829 Mobile

Broker/Agent

Email: [rchitala@farrellrealty.com](mailto:rchitala@farrellrealty.com)



**NIKKI del GIUDICE**

Principal Broker

(503) 750-4094 Mobile

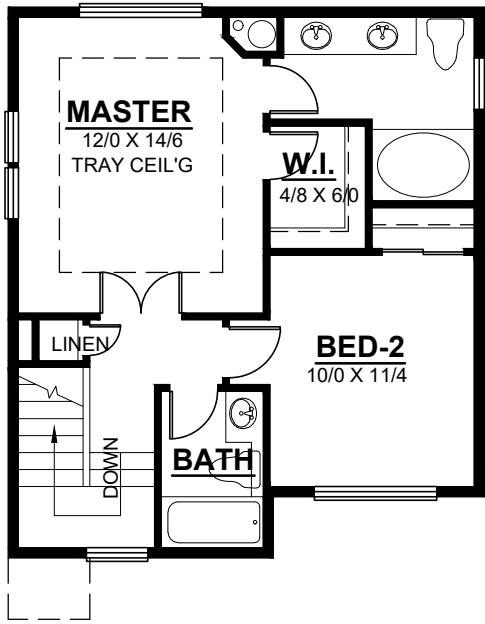
[nikki@farrellrealty.com](mailto:nikki@farrellrealty.com)

 **FARRELL**  
FARRELLREALTY.COM

4772 N. Lombard St. Portland, OR 97203    Office: (503) 283-1900    Fax: (503) 283-6867

Information deemed reliable but not guaranteed.



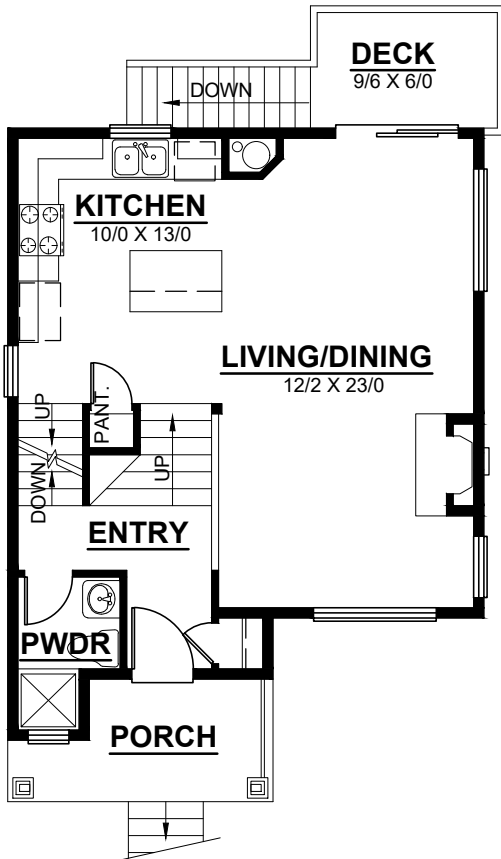


**UPPER FLOOR PLAN - UNIT B/C**

598 sq ft



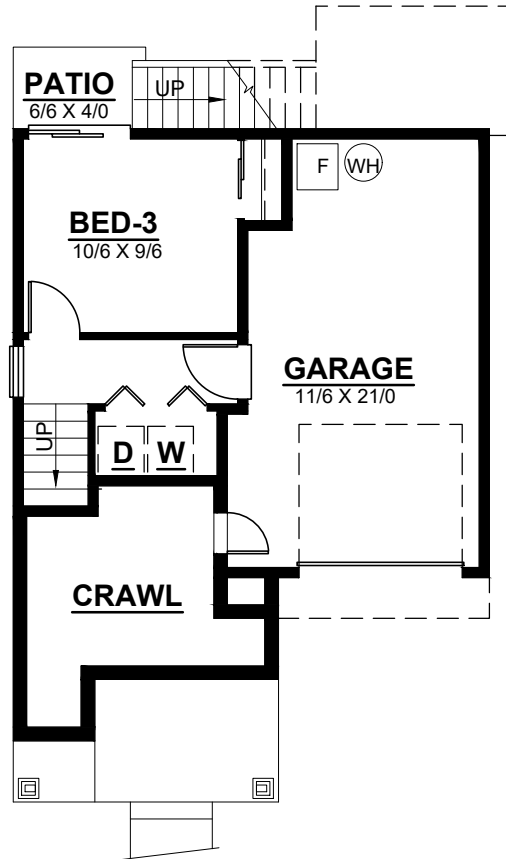
**FRONT ELEVATION**



**MAIN FLOOR PLAN - UNIT B/C**

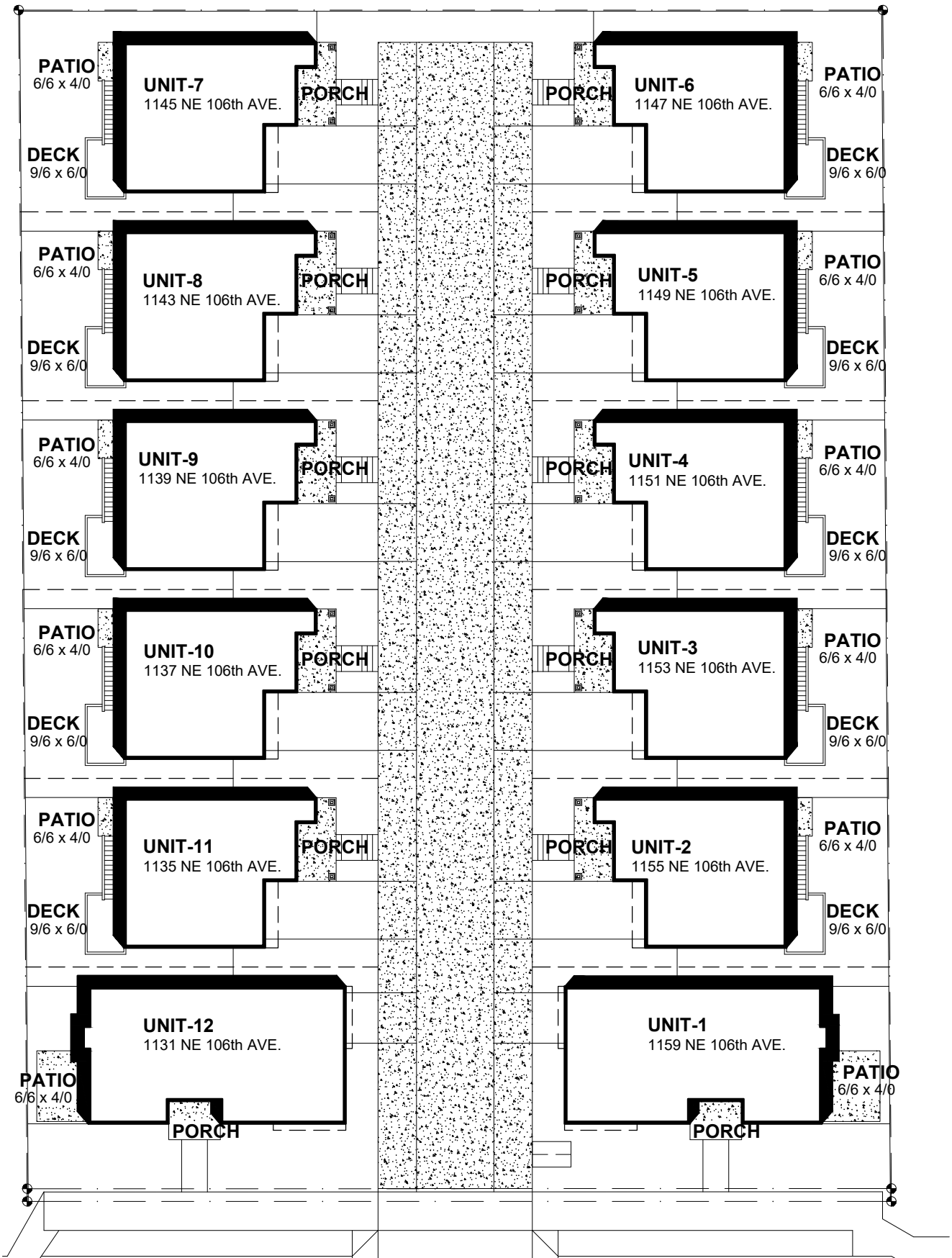
611 sq ft

TOTAL 1427 sq ft



**LOWER FLOOR PLAN - UNIT B/C**

218 sq ft



N.E. 106th AVE.

**DISCOVERY PARK CONDOMINIUMS**

