

*Portland Police Bureau
2005 Statistical Report*

*A Report on Police
and Community Initiatives*



**Tom Potter, Mayor
Derrick Foxworth, Chief of Police**

Table of Contents

Portland Police Bureau 2005 Statistical Report

Table of Contents

Chief's letter	1
Accomplishments	2-5
Recognition and Awards	6
Organizational Chart	7
Personnel Distribution	8
Calls for Service	9
Part I Crimes.....	9
Neighborhood Association Maps	10-11
Reported Offenses per Neighborhood	12-14
Patrol District Maps.....	15-16
Reported Offenses per District	17-18
Adult and Juvenile Arrests	18
Arrests	19
Appendix A	20-21

2005 Demographics of Portland

Population ¹	556,370
Total Sworn Officers	997
Total Non-Sworn.....	259
Sworn Officers per 1,000 Population	1.79
Square Miles of Portland ²	146.6

Cover photograph © 2005 Chris Greenwood Photography

1. Population Research Center, Portland State University

2. City of Portland, Office of Transportation

March 2006

Dear Reader:

I am pleased to share with you the 2005 Portland Police Bureau annual report. This year clearly shows the progress we have made in community policing activities. Many of our highlights are initiatives directly connected to the Mayor's four priority areas including diversity, collaboration, customer service, and sustainability. They are also reflective of progress made in community policing initiatives.

As an example, officers are working in underserved communities to resolve chronic issues of homelessness and conducting focused missions on reducing street crime and drug houses. The Bureau also reached out to the diverse communities in Portland seeking feedback on how we are doing and where we can improve.

The highlights from the past year include:

- The deadly force directive was revised to include a section on shooting at and from a moving vehicle, revised investigative protocols, and post use of force medical attention. We also included a statement on the sanctity of human life.
- Peer and community members are included in the new review board policy and the revised discipline policy.
- In January 2005, the Police Bureau began an aggressive marketing and recruitment campaign geared toward attracting a diverse pool of applicants including women and minorities. The theme "For Every Portland Police Officer There is a Story...Join Us and Write the Next Chapter" carried over to a new 16-minute recruitment video. The number of minorities who applied to take the community police officer written exam increased 36 percent from 237 in 2004 to 322 in 2005.
- The Police Bureau participated with Oregon Partnership, a statewide non-profit agency promoting healthy kids and communities through drug and alcohol awareness, prevention programs, and a 24-hour crisis line for treatment referrals.
- Additional jail beds were made available for Portland Police officers under an inter-governmental agreement between the City of Portland and Multnomah County. These beds are available for a list of offenses that adversely affect neighborhood livability including: burglary, auto theft, drinking and driving, drug and prostitution crimes.
- Advanced Academy recruits received increased community policing training and at in-service officers received two hours of communication, conflict resolution and problem solving.
- The Police Bureau partnered with the Bureau of Human Resources to provide three-hour cultural competency training to all sworn personnel as part of in-service including ethical decision-making in the workplace and the community.

Many of these accomplishments brought the community and police closer together: increasing diversity in the Bureau, improving officer training, hosting precinct open houses and encouraging innovative community policing activities.

For more detailed information on Bureau accomplishments over this last year, please refer to the accomplishments section of this Annual Report.

I promised the community and Bureau members a Police Bureau focused on community policing. We have made great strides, and we will continue to work to further community policing in Portland.

Sincerely,



DERRICK FOXWORTH
Chief of Police

Portland Police Bureau 2005 Accomplishments

Each of the accomplishments listed below relates to one of the following five goals as stated in the Portland Police Bureau's 2004-2006 Community Policing Strategic Plan.

Community Goals:

- Reduce crime and the fear of crime
- Improve the quality of life in neighborhoods
- Improve the community and police partnership

Organizational Goals:

- Develop and encourage personnel
- Improve accountability

Goal 1: Reduce crime and the fear of crime

2005 Year-end stats and trends

Reported Part I crimes have decreased nine percent from 2004 to 2005. Person crimes decreased four percent and property crimes were down nine percent, compared to 2004. Reported robbery decreased by 12 percent; however rape increased by four percent. Reported burglaries decreased 15 percent and reported larcenies were down nine percent.

Crime Analysis Mapping Information Network (CAMIN2)

On January 26, 2005, the Bureau released the next generation of CAMIN2 software, which gives officers the ability to map crimes and do basic and advanced crime analysis for a geographical area over a specific time period. CAMIN2 is available on every police network computer.

Electronic field reporting

Electronic reporting will allow officers to enter report information in the field, and will integrate into the Portland Police Data System (PPDS) for quicker data collection, entry and analysis. Business process re-engineering was completed for the reports process in the fall of 2005. Computers and printers were installed in precincts, contact offices and custody locations also in fall. The Police Bureau began testing the officer entry screens of the newly developed field reporting application in November.

Gun lock distribution

On November 7, 2005, Chief Foxworth distributed 1,300 free gunlocks sent to the Portland Police Bureau by Project ChildSafe through a U.S. Department of Justice grant with additional funding provided by the firearms industry. The Police Bureau partnered with East and Northeast Project Safe Neighborhoods programs for distribution.

LOJACK Technology

On September 7, 2005, the Police Bureau, along with 19 area law enforcement agencies, partnered with LOJACK to reduce auto theft. LOJACK donated tracking computers and the infrastructure to connect its systems directly to the area's law enforcement agencies. Agencies that have this equipment are able to track signals of stolen vehicles equipped with LOJACK technology.

Meth Watch

This partnership includes local retailers, hotel and motel operators, law enforcement and community leaders in a campaign to heighten awareness of the ingredients used to manufacture methamphetamine and to deter thefts and bulk purchases of these materials by meth cooks. In 2005, the Drugs and Vice Division personnel participated in committee meetings and conducted presentations on meth awareness to hotel/motel owners and community organizations. The top 20 meth cooks in Multnomah County were identified and targeted for enhanced enforcement and prosecution.

Oregon Partnership

The Police Bureau participated with Oregon Partnership, a statewide non-profit agency promoting healthy kids and communities through drug and alcohol awareness, prevention programs, and a 24-hour crisis line for treatment referrals. Police Bureau members partnered on training and served on the Board.

Precinct missions

East Precinct conducted a series of missions targeted to reduce meth and related crimes in East Portland. On November 21, 2005, Central Precinct officers conducted a warrant sweep mission targeting street-level narcotics trafficking and sex offenses that led to the arrest of 22 suspects. Northeast Precinct has conducted the following missions: Hispanic and Black gang intervention, curfew and underage drinking, violent crime interdiction, prostitution, car prowling (theft from auto) and drug missions.

Project 57 jail beds

Effective November 1, 2005, 57 additional jail beds are available for Portland Police officers under an inter-governmental agreement between the City of Portland and Multnomah County. These beds are available for a list of offenses that adversely affect neighborhood livability including: burglary, auto theft, felony drinking and driving, identity theft, drug and prostitution crimes.

Taser deployment

In 2005, the Police Bureau deployed Tasers to precincts and divisions. Training was initiated and all officers were Taser certified by the end of in-service training, which concluded in May 2005.

Goal 2: Improve the quality of life in neighborhoods

Bike theft awareness and community/business outreach

On December 2-6, 2005, a public awareness campaign was conducted. There was a focus on bike theft enforcement and crime prevention information was distributed along the Eastbank Esplanade and Springwater Corridor. In September Southeast Precinct conducted a two week bike patrol pilot project in the Hawthorne, Belmont, and lower Burnside areas. Also, Southeast Precinct conducted a canvassing in bike commuter corridors during morning hours, stopping bicyclists to provide crime prevention information on preventing bike theft.

Community livability mission

To help community livability in Downtown Portland during the holiday season, on November 25, 2005, officers conducted visibility missions with increased patrols at several events in Downtown Portland. Drug missions were conducted in October and December focusing on the inner Burnside and Belmont areas. In November Central Precinct officers conducted a prostitution mission in Northwest Portland and arrested 14 suspects. In November and through the holiday season, officers increased patrols in public areas, such as Pioneer Courthouse Square and along Northwest 21st and Northwest 23rd Avenues.

Free bike lights

The Traffic Division worked with the City of Portland Office of Transportation to raise awareness of bike laws. Bicyclists run a significantly higher risk of being involved in a life threatening crash when not equipped with proper lighting. Traffic officers stopped bicyclists without lights and gave them a good quality headlight and rear tail light. Brochures on bike laws and safety information were distributed. The program began in November 2005, and by the end of December approximately 200 lights were given away. Officers also issued written warnings.

Precinct Open Houses

In July and August 2005 the Police Bureau invited neighbors and community organizations to attend five precinct open houses. Bureau members answered questions on public safety and neighborhood livability, gave precinct tours and got to know their neighbors.

School safety mission

Starting September 6, 2005, for two weeks, officers from all five precincts, the Traffic Division, Transit Police and the School Police Division participated in a citywide school safety mission. Officers emphasized enforcement in school zones, bus zones and crosswalks and enforced parking laws in and around school zones. The mission provided a safe environment for children to travel to and from school and to provide a safe environment for learning.

Tired of Tweakers Crime Prevention Campaign

Drug prevention missions were conducted to reduce meth-related burglaries and property related robberies. Officers and volunteers canvassed door-to-door to distribute crime prevention and awareness literature. East Precinct's Neighborhood Response Team, Property Crime Detectives, Traffic Division, Drugs and Vice Division, Auto Theft Task Force, Identification Division, and the Transit Police Division partnered with the Office of Neighborhood Involvement (ONI), Multnomah County Parole and Probation, and community members for this campaign using a three-pronged approach of enforcement, awareness, and prevention.

Goal 3: Improve the community and police partnership

Community livability mission/car prowls missions

On November 18 and 20, 2005, Central Precinct officers and citizens distributed more than 10,000 theft from auto prevention flyers. The mission continued through December 10, 2005.

Problem Oriented Policing strategies

The Police Bureau gained City Council budget approval for \$1 million in one-time resources for fiscal year 2005-06 for a series of innovative, collaborative policing strategies focusing on neighborhood and business district safety, as well as special projects focusing on gangs, drugs and youth. The funding was approved for the 2005-06 budget year. Strategies include providing outreach to individuals in need of mental health and/or substance abuse services in the Downtown/Old Town/Chinatown areas; and for meth initiatives where there is a multi-discipline approach to develop outreach and prevention materials. Many of the projects completed in 2005 focused on enforcement missions and community outreach.

Sexual Minorities Partnership Agreement re-signed

On February 8, 2005, members of the Police Bureau, Multnomah County Sheriff's Office and the Sexual Minorities Roundtable re-signed a partnership agreement which has been in effect since 1994. The agreement fosters an environment of mutual respect, improved communications and collaboration on issues that Sexual Minorities Roundtable members may encounter.

Goal 4: Develop and encourage personnel

Advanced Academy training

The Training Division increased community policing training for Advanced Academy recruits from five to 25 hours. Topics covered were creating partnerships, ethical issues, problem solving, team building, problem identification, analysis, response development and action planning. Instructors for the Advanced Academy included officers and community members.

Communication training

Officers received two hours of communication, conflict resolution and problem solving training during the 2005-06 in-service training. This training for sworn personnel included understanding barriers to effective communication.

Cultural competency

As part of the 2004-05 in-service training, sworn Bureau members received a two-hour class on cultural competency. Also, a course on Perspectives on Profiling was conducted during the 2005-06 in-service training, which included ethical decision-making in the workplace and the community. The issues of racial vs. criminal profiling, protecting the rights of the driver and maintaining ethical standards were part of the curriculum.

Electronic citations

The Oregon legislature approved electronic citations and the Traffic Division purchased a Personal Digital Assistant (PDA) for every officer in the Traffic Division. Distribution began in August 2005. The Police Bureau is currently working with the State and the courts to expand the new traffic citations.

Recruitment

In January 2005, the Police Bureau began its recruitment campaign: "For every Portland police officer there is a story..." geared toward attracting a diverse pool of applicants including women and minorities. In February, four additional background investigators were hired in order to accommodate an increased number of police officer applicants. On September 8, 2005, the Police Bureau launched a transit advertising campaign of 25 bus stop benches, channel cards and bus wraps. In October, a new 16-minute recruitment video was posted to the Police Bureau's website and the Bureau began distributing the new recruitment DVD. The number of minorities who applied to take the community police officer written exam increased 36 percent from 237 in 2004 to 322 in 2005.

Special needs populations

The Crisis Intervention Team Coordinator conducted training in crisis intervention along with Project Respond, a non-profit organization assisting those with mental illness, during the 2004-05 in-service training. There was also training on serving people with epilepsy during the 2004-05 in-service training. The Police Bureau, Multnomah County, and the Bureau of Emergency Communications signed a partnership agreement on how secured facilities will initiate calls to Multnomah County and protocols on how police will respond to such calls.

Goal 5: Improve accountability

Office of Professional Standards/Early intervention system (EIS)

Research was conducted on a proposal to create an Office of Professional Standards that included an early intervention system, an accreditation unit, and an auditing and inspections function. The proposal was reviewed by a number of community organizations and Bureau members and presented to the Mayor in fall 2005. Research on an early intervention system was conducted to tie in key performance data for supervisors to analyze and provide feedback on employee performance. An advisory committee of bargaining unit representatives, employees and supervisors was created to review and make recommendations. The contract to begin work on the EIS database development was awarded in 2005.

Public response to deadly force incidents

The deadly force directive was revised to include a section on shooting at and from a moving vehicle, revised investigative protocols, and post use of force medical attention. The revised directive also includes new sections on the sanctity of human life and the release of information on deadly force incidents. This revised policy became effective in August 2005.

Review boards and discipline policy

A new review board policy was adopted in 2005, and the discipline policy was revised to include procedures on how discipline is recommended and implemented. These revisions resulted from researching best practices, input from the Bureau's bargaining units, a review from the City Attorney, and community and employee input. Both policies now include peers and community as members of the boards.

Significant Events

Death of a Police Officer

Officer Jeff Parker died on September 9, 2005, due to complications from knee surgery. Officer Parker was a 15-year veteran of the Police Bureau and was assigned to North Precinct at the time of his death. Officer Parker's death greatly affected the men and women of the Police Bureau.

New Assistant Chief of Services

Dorothy Elmore was promoted to Assistant Chief of Services on October 6, 2005, following the retirement of Assistant Chief Jim McDaniel. She is the first female African American promoted to the position of Assistant Chief.

Bureau Awards

The Portland Police Bureau held the Awards Ceremony on Thursday, June 30, 2005, at the University of Portland, Buckley Center. The recipients are listed below.

The **Medal of Valor** was awarded to: Officers Robert Searle and Thomas Snitily.

The **Citizen Medal of Heroism** was awarded to: Doland Ry, Kent Devault, Sylvain Warren and Kate Barker.

The **Police Star** was awarded to Officer Dennis McClain.

The **Life Saving Medal** was awarded to: Officers Scott Martin, Sarah Taylor, Brian Hubbard, Kai Ho, Randy Gottwald, and Troy Pahlke, and Stephen Hackl, and MCSO Deputy John Little.

The **Distinguished Service Medal** was awarded to: Officers Steven Larkin and Mark DeLong, and Betty Glantz.

The **Achievement Medal** was awarded to: Sgt. Dan Parks, Officers Julia Rico, Barbara Glass and Joe Welp, and ID Tech II Christopher Wormdahl.

The **Commendation Medal** was awarded to: Sgt. George Weatheroy, Det. Sgt. Edward Hamann, Officers William Goff, Todd Gradwahl and Richard Hascall, and Stan Miller.

The **Unit Commendation** was awarded to the Records Division.

The **Certificate of Appreciation** was awarded to: Linda Maguire, James Downie, David Anderson and Alysia Anderson.

A **Letter of Commendation** was awarded to: Chaz Blackburn, Michael Bohr and Lee Pilcher.

Chief's Forum Awards

The Chief's Form held their annual awards on Monday, December 12, 2005. The recipients are listed below.

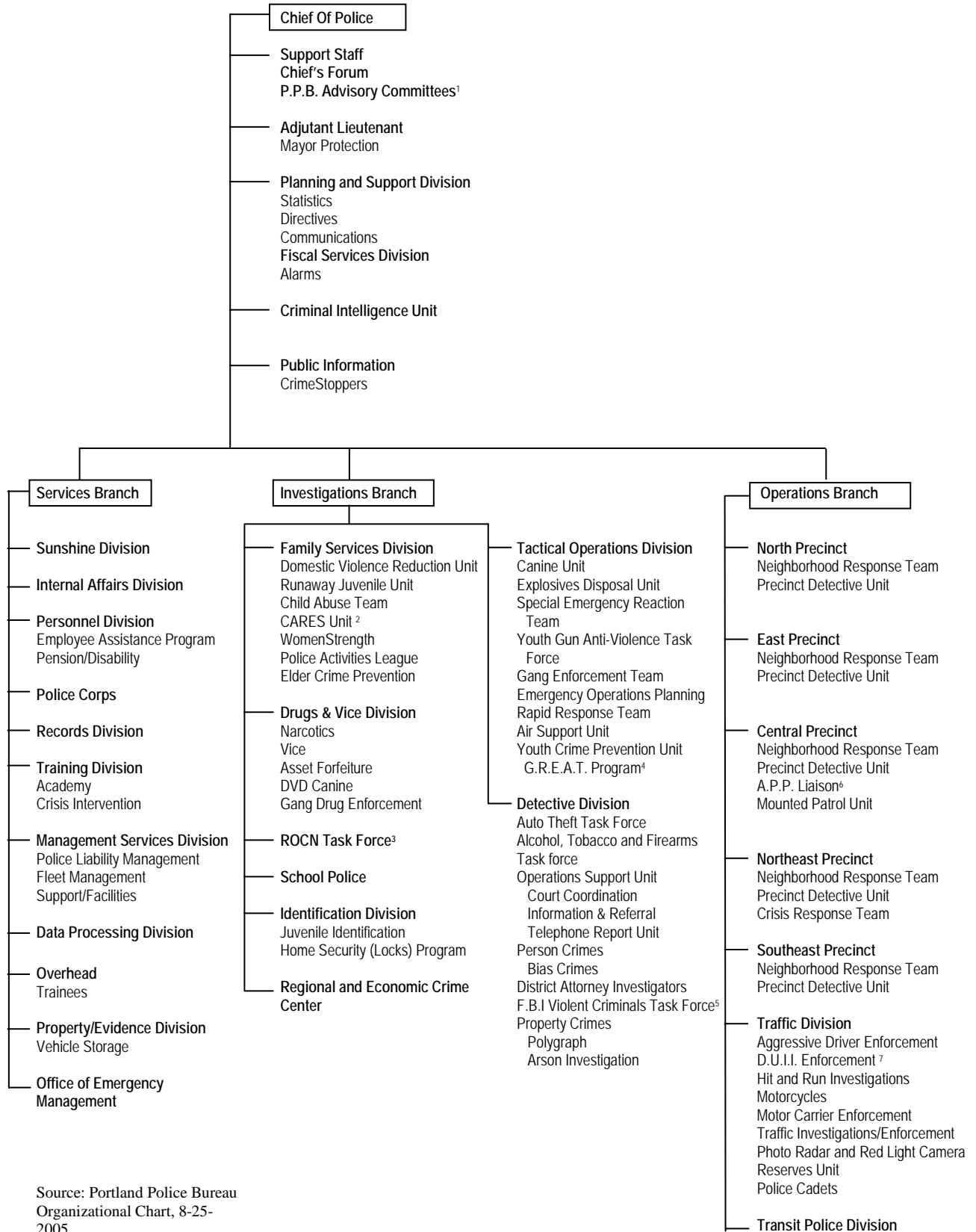
Certificates of Appreciation were given to Cynthia Warren, TriMet bus driver; Doug Thompson, Portland Office of Transportation; Friends of the Mt. Tabor Park & Foot Patrol; Gary Moore, Police reserve lieutenant; Kathy Fuerstenau, Cully Association Of Neighbors; Nancy Hand, Southwest Neighborhoods Crime Prevention & Problem Solving Committee; Pastor Mary H. Overstreet-Smith, Powerhouse Temple Church of God in Christ; Officers Travis Fields and Franz Schoening, and Deputy District Attorney Jessie Gnananathan; Ruth Hander, Madison South Neighborhood Association; Eugene Muir, President, Sumner Association of Neighbors and Central Northeast Neighbors.

Community Policing Problem Solving award was given to Officer David Sessum, Traffic Division; Paul Wiggington, Pete Macias and William Bray, Portland International Raceway; Amie Massier and Peggy Glascock, Portland Parks and Recreation; Dave Smith, volunteer Block Captain Coordinator; Libby Lescalleet, Boys and Girls Club/Portland; Officer Jason Christensen, North Precinct; Officers Jason Harris and Jeffrey Dorn, North Precinct.

The **Youth Recognition Certificate** was awarded to the East Precinct Cadet Post.

Roy Pittman received a **Special Recognition Award** for his work with youth and his commitment to the community.

The **Nathan Thomas Memorial Award** was given to Officer Paul Ware, Crisis Intervention Team Coordinator.



Source: Portland Police Bureau
Organizational Chart, 8-25-
2005
Footnotes: See page 21

Personnel Distribution

	Chief & Asst. Chiefs	Cmdr.	Capt.	Lt.	Sgt.	Det.	Crmlst.	Officer	Total Sworn	Total Non Sworn	Total
Chief's Branch											
Chief's Office	4	0	0	3	2	0	0	6	15	8	23
Planning & Support	0	0	0	0	0	0	0	2	2	13	15
Fiscal Services	0	0	0	0	0	1	0	0	1	17	18
Operations Branch											
Central Precinct	0	1	0	3	15	4	0	111	134	14	148
East Precinct	0	1	0	3	13	4	0	119	140	6	146
North Precinct	0	1	0	2	13	3	0	53	72	6	78
Northeast Precinct	0	1	0	3	13	4	0	99	120	8	128
Southeast Precinct	0	1	0	3	13	4	0	109	130	7	137
Traffic Division	0	1	0	1	6	0	0	43	51	2	53
Transit Police	0	1	0	2	3	0	0	17	23	1	24
Investigations Branch											
Detective Division	0	1	0	3	11	56	0	18	89	18	107
Drugs & Vice Division	0	0	1	2	7	0	0	29	39	8	47
Family Services	0	0	1	0	3	10	0	13	27	4	31
Identification Division	0	0	1	0	2	0	17	0	20	25	45
ROCN Task Force	0	0	1	0	0	0	0	0	1	0	1
School Police	0	0	1	0	2	0	0	18	21	1	22
Tactical Operations	0	1	0	2	7	4	0	35	49	5	54
Services Branch											
Data Processing	0	0	0	0	0	0	0	0	0	7	7
Emergency Management	0	0	0	1	0	0	0	1	2	0	2
Internal Affairs	0	0	1	1	7	0	0	0	9	2	11
Management Services	0	0	0	0	0	0	0	1	1	4	5
Personnel	0	0	1	1	2	0	1	5	10	8	18
Police Corps	0	0	1	0	1	0	0	1	3	1	4
Property/Evidence	0	0	0	1	0	0	0	0	1	16	17
Records Division	0	0	0	0	0	0	0	0	0	74	74
Sunshine Division	0	0	0	0	1	0	0	0	1	0	1
Training Division	0	0	1	1	3	0	0	16	21	4	25
Trainees/Overhead	0	0	0	0	0	0	0	15	15	0	15
Totals	4	9	9	32	124	90	18	711	997	259	1,256

Source: Portland Police Bureau Organizational Chart, 8-25-2005
 The table represents budgeted authority positions including frozen contingency positions.

Footnotes: See page 21, Personnel Distribution

Calls for Service

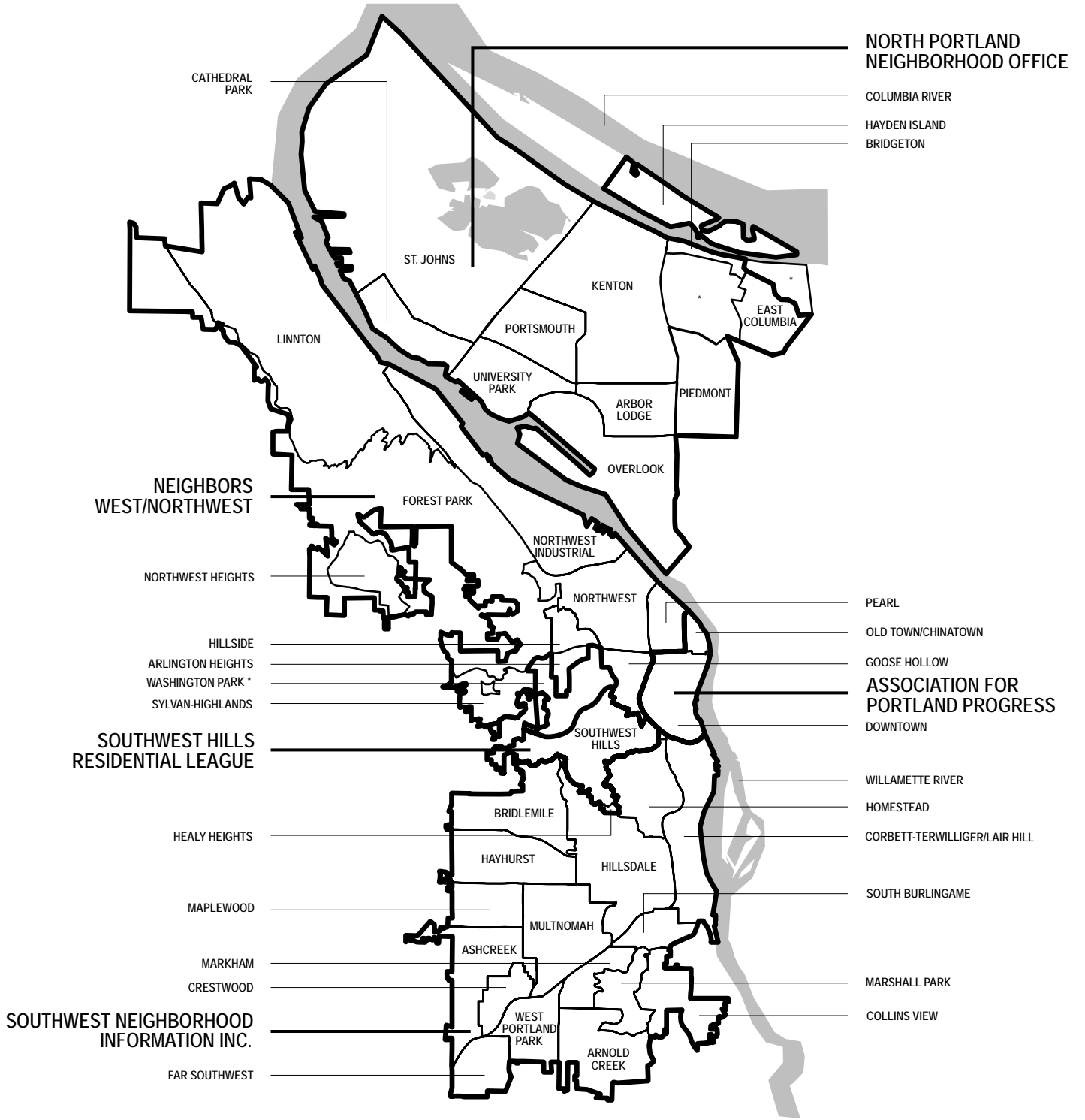
9

	2001	2002	2003	2004	2005
Dispatched Calls ¹	243,861	248,865	262,670	259,661	244,335
Rate of Dispatched Calls Per 1,000 Citizens	455	462	482	472	439
Self Initiated Calls	176,363	185,261	192,184	173,269	189,861
Officers Per 1,000 Citizens	1.96	1.95	1.82	1.81	1.79
Citizens Residing in Bureau's Service Area ²	536,240	538,180	545,140	550,560	556,370
Telephone Report Unit Calls for Service ³	44,840	38,973	30,110	25,486	30,219
Information and Referral Calls	140,640	155,531	134,236	138,543	131,747

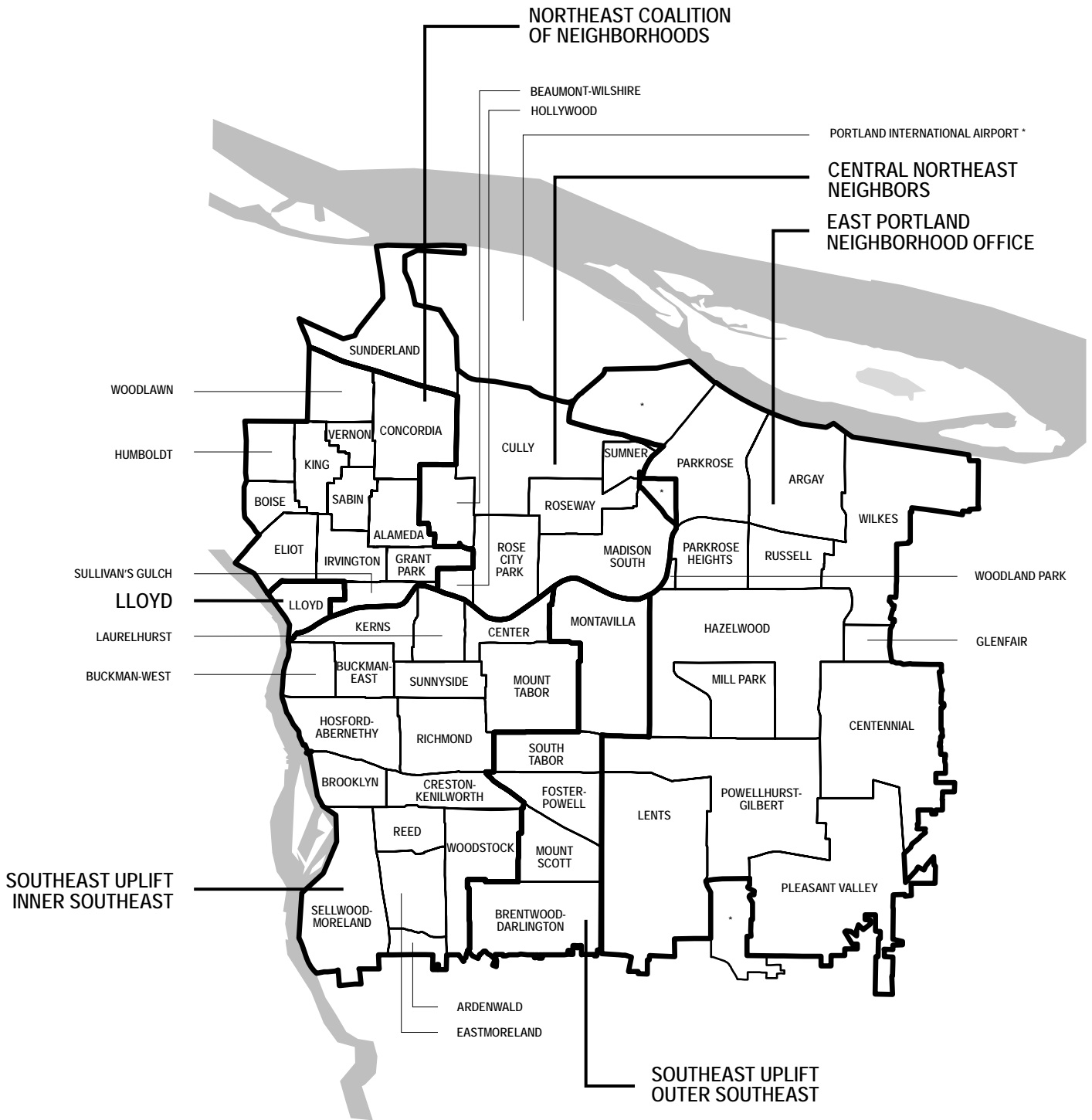
Part I Crimes⁴

	2001	2002	2003	2004	2005	Percent Change 2004-2005
Crimes Against Persons						
Murder ⁵	22	20	28	29	22	-24%
Rape	305	354	310	313	325	4%
Robbery	1,272	1,296	1,375	1,291	1,139	-12%
Aggravated Assault	2,963	2,844	2,732	2,405	2,376	-1%
Total Person Crimes	4,562	4,514	4,445	4,038	3,862	-4%
Rate of Person Crimes per 1,000 population	9	8	8	7	7	
Crimes Against Property						
Burglary	5,615	5,731	6,507	7,259	6,142	-15%
Larceny	28,457	28,052	29,748	28,452	25,941	-9%
Motor Vehicle Theft	4,765	5,255	5,982	6,052	5,834	-4%
Arson	385	496	384	363	375	3%
Total Property Crimes	39,222	39,534	42,621	42,126	38,292	-9%
Rate of Property Crimes per 1,000 population	73	73	78	77	69	
Total Part I-Crimes	43,784	44,048	47,066	46,164	42,154	-9%
Rate of total Part I-Crimes per 1,000 population	82	82	86	84	76	
Citizens Residing in Bureau's Service Area ²	536,240	538,180	545,140	550,560	556,370	

Footnotes: See page 21, Calls for Service/Part I Crimes



* Not an official Neighborhood Association



* Not an official Neighborhood Association

Reported Offenses per Neighborhood

12

	Murder	Rape	Robbery	Aggravated Assault	Burglary	Larceny	Motor Vehicle Theft	Arson	Total Part I	Total Part II	Total Part III	Grand Total	Rate\1,000 Population
North													
Arbor Lodge	1	3	18	18	42	374	53	4	513	449	844	1,806	297.8
Bridgeton	0	0	1	1	14	32	11	0	59	24	88	171	464.7
Cathedral Park	0	2	14	27	37	200	23	2	305	348	699	1,352	445.8
Columbia (East)	0	1	1	2	8	22	4	1	39	19	45	103	136.8
Hayden Island	0	0	21	11	41	431	84	2	590	276	514	1,380	647.9
Kenton	0	1	27	45	83	263	89	4	512	704	1,540	2,756	397.5
Overlook	0	4	12	34	60	282	56	2	450	548	1,239	2,237	367.1
Piedmont	0	2	7	39	68	197	47	3	363	401	783	1,547	239.9
Portsmouth	0	4	10	43	66	190	74	4	391	539	1,131	2,061	248.2
St Johns	1	6	21	101	124	494	97	19	863	1,117	2,251	4,231	372.9
University Park	0	4	5	14	38	155	44	5	265	201	365	831	158.3
Total North	2	27	137	335	581	2,640	582	46	4,350	4,626	9,499	18,475	325.7
Inner Northeast													
Alameda	0	1	1	4	43	107	13	0	169	136	179	484	93.3
Boise	2	2	5	34	42	133	24	2	244	296	567	1,107	361.9
Concordia	0	7	14	26	115	303	45	4	514	468	877	1,859	194.4
Eliot	0	4	24	31	66	273	53	2	453	503	1,080	2,036	606.1
Grant Park	0	1	6	7	40	123	31	2	210	134	256	600	170.9
Humboldt	2	7	16	42	64	221	38	8	398	514	1,028	1,940	383.3
Irrington	0	1	9	5	84	211	33	2	345	285	450	1,080	161.6
King	0	9	31	67	92	276	39	5	519	966	1,852	3,337	579.9
Lloyd	0	6	44	28	30	902	115	4	1,129	780	1,237	3,146	5200.0
Sabin	0	2	4	7	50	136	9	1	209	206	310	725	178.5
Sullivans Gulch	1	2	28	18	30	427	73	1	580	398	660	1,638	538.3
Vernon	1	4	6	29	38	91	8	3	180	250	451	881	283.5
Woodlawn	0	6	12	29	63	137	38	5	290	408	845	1,543	315.6
Total Inner NE	6	52	200	327	757	3,340	519	39	5,240	5,344	9,792	20,376	352.0
Central Northeast													
Beaumont-Wilshire	0	1	1	5	51	127	20	0	205	101	219	525	95.6
Cully	1	14	19	95	137	401	119	4	790	998	2,087	3,875	298.8
Hollywood	0	3	13	11	29	176	28	1	261	285	467	1,013	951.2
Madison South	0	1	35	27	87	255	90	2	497	796	1,520	2,813	402.9
Rose City Park	0	6	13	26	87	231	97	2	462	324	990	1,776	199.5
Roseway	0	2	18	19	87	206	51	0	383	381	672	1,436	232.2
Sumner	0	3	4	15	37	77	29	0	165	192	428	785	374.3
Sunderland	0	1	1	2	25	96	35	0	160	65	173	398	680.3
Total Central NE	1	31	104	200	540	1,569	469	9	2,923	3,142	6,556	12,621	285.0
East Portland													
Argay	0	3	16	26	92	285	99	6	527	383	763	1,673	289.0
Centennial	1	14	35	90	248	1,107	291	3	1,789	1,310	2,625	5,724	253.6
Glenfair	0	3	6	34	55	114	71	3	286	278	588	1,152	447.4
Hazelwood	2	12	74	101	238	1,832	428	10	2,697	1,987	4,561	9,245	464.2
Lents	1	7	37	114	254	1,044	359	20	1,836	1,740	3,684	7,260	395.5

Reported Offenses per Neighborhood, cont.

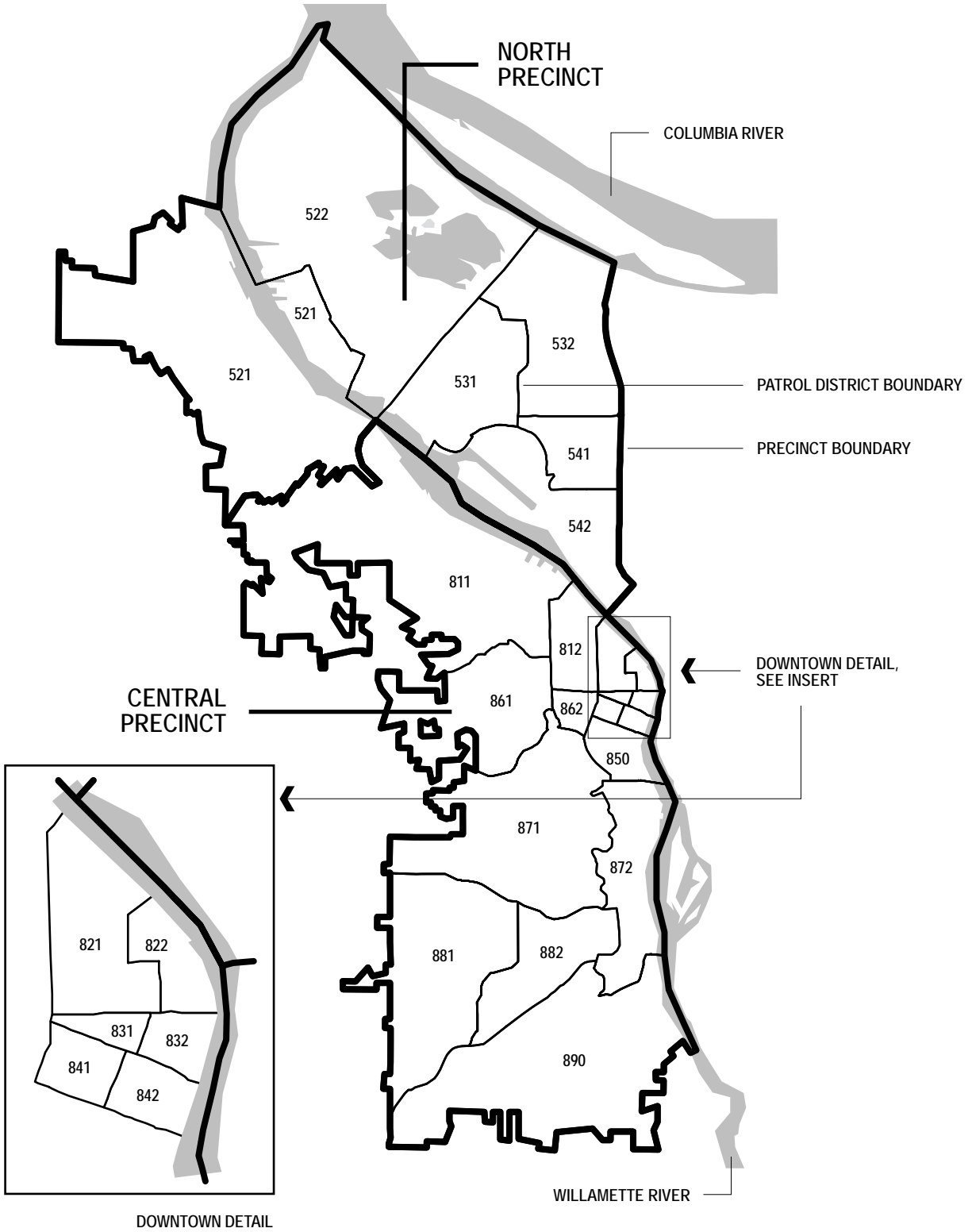
	Murder	Rape	Robbery	Aggravated Assault	Burglary	Larceny	Motor Vehicle Theft	Arson	Total Part I	Total Part II	Total Part III	Grand Total	Rate\1,000 Population
Mill Park	0	3	16	33	93	266	84	7	502	592	1,452	2,546	367.3
Parkrose	0	4	12	29	83	398	148	5	679	521	1,233	2,433	402.2
Parkrose Heights	0	1	4	26	52	128	53	2	266	265	581	1,112	182.5
Pleasant Valley	0	3	4	19	55	116	37	3	237	184	430	851	200.9
Powellhurst-Gilbert	1	13	35	128	341	817	280	7	1,622	1,751	3,650	7,023	390.4
Russell	0	1	4	7	29	161	39	0	241	197	344	782	238.4
Wilkes	0	3	5	24	68	202	59	1	362	233	522	1,117	146.5
Woodland Park	0	0	1	1	1	7	1	0	11	35	46	92	304.6
Total E Portland	5	67	249	632	1,609	6,477	1,949	67	11,055	9,476	20,479	41,010	337.0
Inner Southeast													
Ardenwald	0	0	0	0	3	27	1	0	31	21	49	101	218.1
Brooklyn	0	0	6	11	29	108	34	1	189	217	464	870	245.6
Buckman-East	0	3	6	20	63	310	77	7	486	475	783	1,744	252.0
Buckman-West	0	0	17	39	48	336	50	6	496	931	2,172	3,599	3,591.8
Center	0	5	7	13	43	243	92	0	403	266	625	1,294	275.3
Creston-Kenilworth	1	5	15	44	93	300	91	6	555	557	1,131	2,243	272.4
Eastmoreland	0	0	0	2	37	167	15	2	223	86	108	417	89.3
Hosford-Abernethy	0	3	10	22	126	361	89	7	618	461	1,100	2,179	314.3
Kerns	0	6	15	21	64	372	93	10	581	409	1,011	2,001	392.7
Laurelhurst	0	0	4	2	63	90	17	0	176	123	364	663	145.7
Mt Tabor	0	2	1	13	89	244	60	4	413	301	629	1,343	133.8
Reed	0	1	2	4	46	115	47	3	218	116	251	585	174.8
Richmond	0	2	6	22	95	289	78	9	501	557	950	2,008	177.4
Sellwood-Moreland	0	3	10	25	91	376	66	5	576	366	801	1,743	166.4
Sunnyside	0	2	15	32	81	393	63	28	614	408	753	1,775	248.1
Woodstock	0	1	13	18	71	278	45	2	428	283	610	1,321	155.9
Total Inner SE	1	33	127	288	1,042	4,009	918	90	6,508	5,577	11,801	23,886	246.5
Outer Southeast													
Brentwood-													
Darlington	1	5	11	34	103	277	66	13	510	711	1,374	2,595	226.4
Foster-Powell	0	4	22	31	83	361	92	16	609	534	1,116	2,259	306.6
Montavilla	1	4	26	63	203	567	237	19	1,120	1,526	2,984	5,630	352.2
Mt Scott	0	5	13	27	77	229	81	7	439	492	1,056	1,987	273.4
South Tabor	0	1	13	17	83	225	66	2	407	385	889	1,681	274.2
Total Outer SE	2	19	85	172	549	1,659	542	57	3,085	3,648	7,419	14,152	293.5
Southwest													
Arnold Creek	0	1	0	2	7	18	0	1	29	28	64	121	41.3
Ashcreek	0	0	0	1	12	58	6	1	78	90	193	361	76.2
Bridlemile	0	1	0	2	23	67	5	2	100	73	163	336	67.1
Collins View	0	0	0	3	10	112	2	5	132	120	95	347	168.9
Corbett-Terw/Lair	0	1	6	6	94	228	37	3	375	232	515	1,122	220.9
Crestwood	0	0	0	1	4	18	1	0	24	25	30	79	80.6
Far Southwest	0	0	2	2	12	67	4	0	87	66	111	264	213.8
Hayhurst	0	0	0	9	23	72	7	2	113	77	218	408	78.7

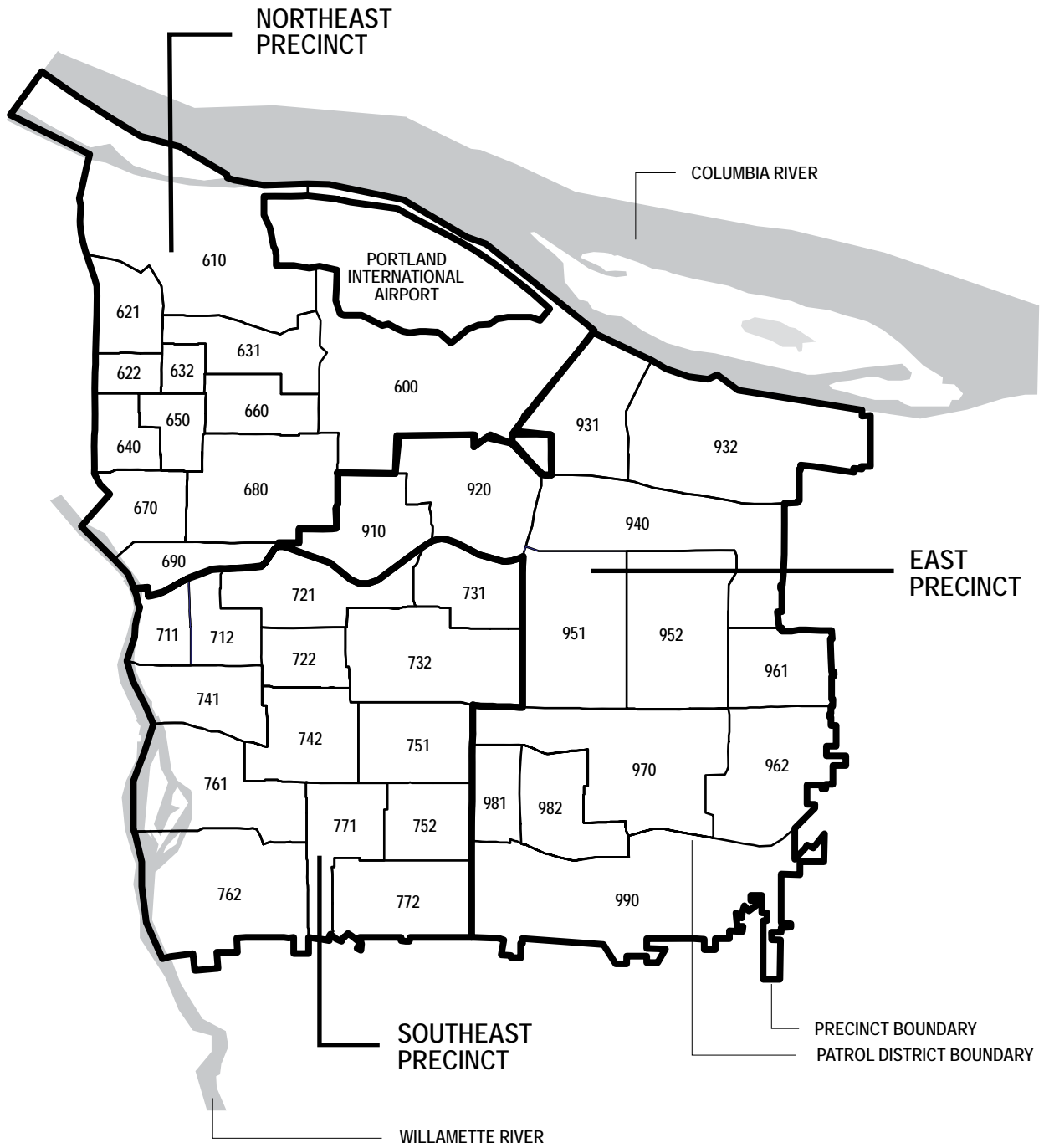
Reported Offenses per Neighborhood, cont.

14

	Murder	Rape	Robbery	Aggravated Assault	Burglary	Larceny	Motor Vehicle Theft	Arson	Total Part I	Total Part II	Total Part III	Grand Total	Rate\1,000 Population
Healy Heights	0	0	0	0	0	1	0	0	1	3	3	7	31.7
Hillsdale	0	2	9	8	34	142	20	2	217	205	524	946	127.2
Homestead	0	1	2	3	18	178	13	0	215	97	251	563	220.3
Maplewood	0	1	0	0	6	28	3	1	39	43	73	155	60.6
Markham	0	0	0	1	12	29	5	0	47	34	67	148	63.7
Marshall Park	0	0	0	1	5	15	0	0	21	11	26	58	40.6
Multnomah	1	3	5	10	47	169	31	5	271	273	685	1,229	185.5
South Burlingame	0	0	0	1	4	13	6	0	24	34	83	141	110.2
Southwest Hills	0	1	0	5	27	68	10	0	111	56	112	279	68.8
W Portland Park	0	1	0	11	18	73	4	5	112	139	385	636	168.0
Total Southwest	1	12	24	66	356	1,356	154	27	1,996	1,606	3,598	7,200	121.1
Northwest													
Arlington Heights	0	0	0	0	9	5	0	1	15	12	10	37	53.5
Forest Park	0	0	0	3	26	71	5	1	106	50	98	254	267.9
Goose Hollow	0	4	6	13	48	317	83	4	475	367	964	1,806	332.4
Hillside	0	0	0	0	13	19	6	1	39	10	37	86	66.9
Linnton	0	0	0	4	14	29	6	0	53	45	153	251	287.5
Northwest	0	4	28	34	130	910	170	4	1,280	1,053	1,811	4,144	333.9
NW Heights	0	0	0	0	6	7	1	0	14	19	46	79	31.4
NW Industrial	0	0	3	1	22	53	14	0	93	57	155	305	14523.8
Pearl	0	5	10	18	55	413	44	1	546	569	1,083	2,198	1974.8
Sylvan-Highlands	0	0	1	0	10	26	2	0	39	111	68	218	188.9
Total Northwest	0	13	48	73	333	1,850	331	12	2,660	2,293	4,425	9,378	354.6
Downtown													
Downtown	3	12	118	119	202	2,071	216	12	2,753	5,502	9,602	17,857	1,792.0
Old Town/ Chinatown	0	7	28	73	24	253	35	3	423	2,489	3,769	6,681	2291.2
Total Downtown	3	19	146	192	226	2,324	251	15	3,176	7,991	13,371	24,538	1,905.0
Unknown/ No Neighborhood	1	52	25	66	114	692	141	8	1,099	1,259	5,796	8,154	

Note: Rates are based on residential population data. Many factors can influence the Rate/1000 Population calculations and can affect meaningful comparisons among neighborhoods. For example, the large work force in the Lloyd, Downtown, Old Town/Chinatown, Pearl and Northwest Industrial neighborhoods can distort the crime rate for those areas.





Reported Offenses per Patrol District

17

	Murder	Rape	Robbery	Aggravated Assault	Burglary	Larceny	Motor Vehicle Theft	Arson	Total Part I	Total Part II	Total Part III	Grand Total
North Precinct												
521	0	0	14	33	45	183	27	2	304	336	716	1,356
522	1	8	21	100	133	544	100	19	926	1,179	2,400	4,505
531	0	8	15	57	106	345	118	9	658	741	1,497	2,896
532	0	1	27	45	81	263	89	4	510	703	1,539	2,752
541	1	3	19	25	56	422	64	6	596	558	1,089	2,243
542	0	4	11	27	46	234	45	0	367	440	1,007	1,814
North Totals	2	24	107	287	467	1,991	443	40	3,361	3,957	8,248	15,566
Northeast Precinct												
600	1	19	25	113	196	587	189	4	1,134	1,260	2,676	5,070
610	0	3	28	22	119	688	162	8	1,030	550	1,187	2,767
621	0	1	6	37	58	153	38	2	295	321	650	1,266
622	1	2	11	16	35	159	25	2	251	327	557	1,135
631	0	5	8	28	69	205	48	5	368	444	881	1,693
632	1	5	20	27	46	144	26	4	273	435	792	1,500
640	3	8	9	66	84	265	49	9	493	742	1,420	2,655
650	0	10	25	54	104	267	35	6	501	699	1,371	2,571
660	0	8	13	40	111	256	26	3	457	447	868	1,772
670	0	5	31	36	86	339	63	2	562	627	1,285	2,474
680	0	3	13	20	225	554	88	4	907	610	1,003	2,520
690	1	8	71	43	60	1,323	188	5	1,699	1,164	1,873	4,736
NE Totals	7	77	260	502	1,193	4,940	937	54	7,970	7,626	14,563	30,159
Southeast Precinct												
711	0	3	20	47	56	395	64	7	592	1,123	2,730	4,445
712	0	5	10	31	89	471	111	12	729	600	1,109	2,438
721	0	8	21	22	143	520	157	4	875	527	1,355	2,757
722	0	1	15	33	88	419	70	28	654	525	882	2,061
731	0	0	20	35	120	335	145	5	660	870	1,704	3,234
732	1	7	8	47	178	489	156	20	906	982	1,956	3,844
741	0	3	10	22	133	399	98	10	675	504	1,161	2,340
742	1	6	22	54	150	440	131	10	814	844	1,688	3,346
751	0	4	26	42	149	468	140	12	841	789	1,760	3,390
752	0	6	20	36	105	387	114	13	681	690	1,430	2,801
761	0	3	9	22	104	335	101	5	579	428	880	1,887
762	0	1	9	20	102	466	62	6	666	380	801	1,847
771	0	1	13	18	70	280	45	2	429	285	617	1,331
772	1	5	11	34	111	277	71	13	523	716	1,383	2,622
SE Totals	3	53	214	463	1,598	5,681	1,465	147	9,624	9,263	19,456	38,343
Central Precinct												
811	0	1	6	9	86	271	55	3	431	275	469	1,175
812	0	3	23	29	83	721	127	2	988	898	1,612	3,498
821	0	4	18	31	51	400	40	1	545	1,332	2,138	4,015
822	0	6	17	52	19	180	29	2	305	1,520	2,395	4,220
831	1	2	15	19	17	149	17	2	222	932	1,440	2,594

Reported Offenses per Patrol District, cont.

18

	Murder	Rape	Robbery	Aggravated Assault	Burglary	Larceny	Motor Vehicle Theft	Arson	Total Part I	Total Part II	Total Part III	Grand Total
Central Precinct, cont.												
832	0	3	25	34	12	154	25	2	255	1,623	2,288	4,166
841	0	1	23	13	41	397	38	1	514	1,027	1,877	3,418
842	2	1	31	27	21	530	30	1	643	931	1,631	3,205
850	0	6	27	32	111	881	111	7	1,175	1,161	2,681	5,017
861	0	0	4	2	61	224	29	2	322	220	333	875
862	0	4	6	12	41	238	66	4	371	325	879	1,575
871	0	3	5	12	78	370	38	3	509	313	681	1,503
872	0	1	6	6	101	248	48	3	413	249	555	1,217
881	0	4	3	15	64	281	33	4	404	335	724	1,463
882	1	3	9	15	52	205	37	6	328	350	949	1,627
890	0	2	2	22	70	331	18	11	456	423	816	1,695
Central Totals	4	44	220	330	908	5,580	741	54	7,881	11,914	21,468	41,263
East Precinct												
910	0	9	28	41	122	438	146	3	787	656	1,560	3,003
920	0	3	51	44	162	427	119	2	808	1,124	2,077	4,009
931	0	4	12	29	83	398	148	5	679	521	1,233	2,433
932	0	5	20	45	121	403	136	7	737	504	1,046	2,287
940	0	7	18	79	187	509	198	5	1,003	957	1,925	3,885
951	1	7	68	70	162	1,618	350	13	2,289	1,656	3,991	7,936
952	2	8	25	78	197	573	189	5	1,077	1,060	2,321	4,458
961	0	12	11	28	94	387	115	1	648	519	1,090	2,257
962	0	2	13	43	109	377	127	1	672	460	971	2,103
970	1	13	43	138	360	1,079	304	8	1,946	1,957	3,943	7,846
981	1	4	21	36	93	507	145	9	816	755	1,538	3,109
982	0	1	8	32	57	185	79	7	369	336	791	1,496
990	1	5	12	62	168	489	177	6	920	854	1,852	3,626
East Totals	6	80	330	725	1,915	7,390	2,233	72	12,751	11,359	24,338	48,448
Unknown/ Not Portland District	0	47	14	44	26	334	37	3	505	843	4,663	6,011

Adult and Juvenile Arrests

	2001	2002	2003	2004	2005
Juvenile					
Part I	1,312	1,269	1,475	1,505	1,339
Part II	2,898	2,177	2,265	2,508	2,833
Part III	942	795	799	800	757
Total Juvenile	5,152	4,241	4,539	4,813	4,929
Adult					
Part I	6,204	7,181	7,448	7,061	6,599
Part II	18,324	16,769	16,881	18,029	19,582
Part III	6,815	7,200	7,341	6,644	6,790
Total Adult	31,343	31,150	31,670	31,734	32,971

Source: Portland Police Data System (PPDS); Juvenile: age 17 and younger. For Definitions: See Appendix A

Arrests

19

	Adults Arrested	Juveniles Arrested	Total Arrests in 2005
Part I Crime Arrests			
Willful Criminal Homicide	65	16	81
Rape	49	3	52
Robbery	331	56	387
Aggravated Assaults	500	122	622
Burglary	519	136	655
Larceny	4,253	892	5,145
Motor Vehicle Theft	839	91	930
Arson	43	23	66
Total Part I Arrests	6,599	1,339	7,938
Part II Crime Arrests			
Simple Assaults	3,739	374	4,113
Forgery	506	13	519
Fraud	384	30	414
Stolen Property	49	14	63
Vandalism	540	199	739
Weapon Laws	457	75	532
Prostitution	509	17	526
Sex Crimes	209	16	225
Drug Laws			
Opium	1	0	1
Heroin	508	9	517
Morphine	4	1	5
Cocaine	1,978	57	2,035
Codeine	27	1	28
Hashish	9	0	9
Marijuana	799	105	904
Synthetic Drugs	33	3	36
Dangerous Drugs	1,517	29	1,546
Other Drug Laws	55	8	63
Drug Laws Total	4,931	213	5,144
Gambling	2	6	8
Family Offenses	30	0	30
Driving Under the Influence of Intoxicants	1,985	14	1,999
Liquor Laws	2,072	232	2,304
Disorderly Conduct	875	155	1,030
Kidnapping	7	0	7
Curfew	7	662	669
Runaway	6	637	643
All Others	3,274	176	3,450
Total Part II Arrests	19,582	2,833	22,415
Part III Crime Arrests			
Miscellaneous Traffic	2,011	43	2,054
Protective Custody	5	478	483
Other Custody	7	1	8
Warrants	65	3	68
Fugitives	4,702	232	4,934
Total Part III Arrests	6,790	757	7,547
Grand Total	32,971	4,929	37,900

Footnotes: See page 21, Arrests

Aggravated Assault: An attack by one person upon another for the purpose of inflicting severe injury. This type of assault usually is accompanied by the use of a weapon or by means likely to produce death or injury.

All Other Offenses: Except Traffic - Includes trespass, blackmail, bomb threat, animal ordinances, and littering.

Arrest: The actual number of persons arrested (both booked and taken into custody; and cited and released) for committing criminal acts.

Arson: Any willful burning or attempt to burn a building, motor vehicle, aircraft, or personal property of another.

Burglary: The unlawful entry of a structure (both residential and non-residential) with intent to commit a theft.

Car Prowl: Theft from a motor vehicle such as a battery, radio, or items inside the vehicle, e.g., laptop, cell phone.

Crimes Against Persons: Criminal offenses where the victim is present and the act is violent, threatening or has the potential of being physically harmful.

Crimes Against Property: Offenses that involve taking something of value by theft or deception or the destruction of property.

Disorderly Conduct: In this classification are placed all offenses of committing a breach of the peace.

Drug Laws: Included are all violations of state and local laws, specifically those related to the unlawful possession, sale, use, growing, manufacturing, and making of illegal drugs.

Driving Under the Influence of Intoxicants (D.U.I.): Driving or operating any vehicle while under the influence of liquor or drugs.

Embezzlement: Misappropriation of money or property entrusted to one's care.

Extortion: The use of fear of death, injury, property loss, reputation, etc. to induce or compel another to deliver property or perform some act or omission.

Family Offenses: Included here are offenses such as abandonment, neglect of children, custodial interference and non-support. (Physical abuse would be reported as an assault).

Forgery also Forgery/Counterfeiting: Forgery and counterfeiting are treated as allied offenses. In this classification are placed all offenses dealing with the making, altering, or possessing, with intent to defraud, anything false in the semblance of that which is true.

Fraud: Fraudulent conversion and obtaining money or property by false pretenses.

Fugitives: This category covers arrests made for other agencies and may be for: Parole/Probation violation, AWOL (absence without leave) from a penal institution, etc.

Gambling: All offenses which relate to promoting, permitting, or engaging in gambling are included in this category.

Homicide: Includes willful murder and aggravated murder.

Kidnapping: The interference with another person's liberty without consent or legal authority.

Larceny: The unlawful taking of property from the possession of another; includes pickpocket, pursesnatch, shoplift, bike theft, and theft from motor vehicle (car prowl).

Liquor Laws: With the exception of Driving Under the Influence all liquor law violations, state or local, are placed in this classification.

Miscellaneous Traffic Crimes: Serious traffic offenses which are classified as a misdemeanor or felony as defined by the Oregon Motor Vehicle Code.

Motor Vehicle Theft: The theft or attempted theft of a motor vehicle; includes motorcycles.

Murder: The willful (non-negligent) killing of one human being by another.

Negligent Homicide: The killing of another person through gross negligence.

Offenses - Excludes motor vehicle traffic death.

Arrests - Includes persons arrested for motor vehicle traffic death.

Offense: The criminal act, the number of criminal acts.

Part I Crimes: A group of crimes which are reported and tracked nationally: murder, rape, robbery, aggravated assault, burglary, larceny, motor vehicle theft, and arson.

Part II Crimes: A group of crimes which are reported and tracked nationally: simple assault, forgery, fraud, stolen property, vandalism, weapon laws, prostitution, sex crimes, drug laws, gambling, family offenses, D.U.I., liquor laws, disorderly conduct, kidnapping, curfew, runaway, and other offenses (see All Other Offenses above).

Part III Crimes: A group of crimes which are reported and tracked within the State of Oregon: includes traffic, warrants, protective custody, fugitives, officer assaults, and property and vehicles recovered for other jurisdictions.

Protective Custody: The custody of persons for detoxification, mental holds, material witness, or protective custody.

Examples: transport of an intoxicated subject to the local detoxification center; taking a child into protective custody pending further investigation of the child's care and welfare.

Prostitution: Included in this classification are the sex offenses of a commercialized nature.

Pursesnatch: To snatch a purse from the physical control of another. (If force is directed or used against the victim the matter becomes a robbery).

Rape: The carnal knowledge of a female, forcibly and against her will.

Robbery: The taking or attempting to take anything of value from a person or persons by force or threat of force.

Runaway: When a juvenile has departed from some location within Multnomah County and the juvenile's parents or guardians have reported them as a runaway.

Sex Crimes: Covers offenses such as statutory rape, contributing to the sexual delinquency of a minor, non-forcible rape, incest, molest, indecent exposure, forcible and non-forcible sodomy, obscene phone calls. (Does not include forcible rape, or prostitution).

Simple Assault: Assaults which are limited to the use of physical force and result in little or no injury to the victim.

Stolen Property Offenses: Included in this classification are all offenses of buying, receiving and possessing stolen property, as well as all attempts to commit any of these offenses.

Vandalism: Consists of the willful destruction, or defacement of property.

Warrants: Includes service of warrants of arrest and related papers for Multnomah County, as well as all other jurisdictions within the United States.

Weapons Regulation Laws: Deals with weapon offenses which are regulatory in nature, such as: furnishing a deadly weapon to a minor; excon or alien in possession of a firearm.

Willful Murder and Non Negligent Manslaughter: The willful (non-negligent) killing of one human being by another.

Appendix A Source:

Oregon Law Enforcement Data System (LEDS); Portland Police Data System. These definitions are not intended to serve as legal definitions.

Organizational Chart Footnotes, Page 7:

1. Portland Police Bureau 2. Child Abuse Response Evaluation Services 3. Regional Organized Crime and Narcotics 4. Gang Resistance Education and Training 5. Federal Bureau of Investigation 6. Association for Portland Progress 7. Driving Under the Influence of Intoxicants

Personnel Distribution, Page 8:

Asst. Chief = Assistant Chief, Cmdr. = Commander, Capt. = Captain, Lt. = Lieutenant, Sgt. = Sergeant, Det. = Detective, Crmlst. = Criminalist

Detectives and Sergeants were previously reported under the same category, but are now separated. Personnel numbers reflect budgeted authority figures, which include vacancies, but do not include overhires.

Calls for Service and Part I Crimes Footnotes, Page 9:

1. Data on "Dispatched Calls" are from BOEC (Bureau of Emergency Communication) Computer Aided Dispatch (CAD) System incident tapes and include all calls to 9-1-1 and non-emergency calls for which a patrol car was dispatched.
2. Population numbers are for July 1 of the given year and are from Portland State University, Population Research Center.
3. TRU calls are calls for service which are handled by the Telephone Report Unit, either by giving advice, taking a report, or mailing a report form for the complainant to complete and return. Excluded are calls that were initially screened by TRU officers for which a patrol car was subsequently dispatched.
4. Part I Crime data are from Oregon Law Enforcement Data System (LEDS). Included are actual offenses known to the police. Reported offenses which upon investigation are unfounded or baseless are not included. For definitions of crimes see Appendix A.
5. Murder includes willful criminal homicide, but not homicide through negligence.

Arrests, Page 19

Source: Portland Police Data System

For definitions: See Appendix A



**Tom Potter, Mayor
Derrick Foxworth, Chief of Police**

This report was produced by the Planning and Support Division.

**Portland Police Bureau
1111 S.W. 2nd Avenue
Portland, OR 97204
(503) 823-0283**

<http://www.portlandpolicebureau.com>

Printed on recycled paper