

Portland Police Bureau 2008 Statistical Report



Dan Saltzman, Commissioner
Roseanne M. Sizer, Chief of Police

Table of Contents

Portland Police Bureau 2008 Statistical Report

Table of Contents

Accomplishments	1-2
Recognition and Awards	3-4
Organizational Chart.....	5
Personnel Distribution	6
Budget	6
Calls for Service	7
Part I Crimes	7
Neighborhood Association Maps	8-9
Reported Offenses per Neighborhood	10-12
Patrol District Maps.....	13-14
Reported Offenses per District	15-16
Adult and Juvenile Arrests.....	16
Arrests	17
Appendix A	18-19

2008 Demographics of Portland

Population ¹	575,930
Total Sworn Officers	1,005
Total Non-Sworn	295
Sworn Officers per 1,000 Population	1.75
Square Miles of Portland ²	146.6

1. Population Research Center, Portland State University

2. City of Portland, Office of Transportation

CASASTART Program: North Precinct developed a partnership with Neighborhood House and the CASASTART Program. The school-centered, positive youth development program is aimed at preventing substance abuse and violence among high risk 8-13 year olds and reducing drug related crime in their neighborhoods. By bringing together the schools, health and social service agencies and law enforcement the pilot project has proved to be successful with students showing improved grades and attendance and lack of referral and expulsions.

Changing Perceptions: The Police Bureau added a new course for in-service titled Changing Perceptions. This course informs members about the Bureau's plan to address racial profiling and helps to identify skills performed by officers that promote community trust during contact stops.

Contact Office: In partnership with members of the community East Precinct Officers refurbished a building donated by the Rossi Family and turned it into a community policing contact office. Staffed by volunteers from Elders in Action the contact office has become a resource for both officers and citizens in the surrounding neighborhood.

COPLOGIC: In 2008 the Police Bureau began contract negotiations with COPLOGIC to provide citizens with an online crime reporting system. When launched, the system will be accessible to the community 24 hours a day and it has the ability to provide citizens with a reference number after their reports are submitted.

CrimeReports.com: Partnering with a crime reporting service, the Police Bureau has a new online crime and mapping tool that provides easy to read incident crime maps and automated alerts to citizens of Portland. Through CrimeReports.com citizens can view a map which is updated daily of 9-1-1 calls dispatched to the Portland Police Bureau.

Crime Scene Certification Training: The Forensic Evidence Division oversaw the development for training of personnel to attain crime scene investigator certification standardization. The training will be held in early 2009.

Downtown livability: Through a variety of innovative strategies and collaboration with other partners Central Precinct officers were able to enhance livability in the downtown core by closing dangerous buildings that were out of code compliance, implementing public service announcements and producing informational flyers to reduce car prowl victimization, working with area businesses to identify known drug dealers and develop effective enforcement strategies, and assisting with emergency shelter operations for homeless citizens during a severe winter storm.

Electronic field reporting: In December of 2008 the Bureau's Telephone Reporting Unit went completely paperless processing police reports electronically using an electronic field reporting program. Other divisions are expected to move to the paperless process in 2009.

Forensic Evidence Division: The Police Bureau's Identification Division changed its name to the Forensic Evidence Division in an effort to more clearly define the parameters of the division and clarify its duties to the public. The Forensic Evidence Division also established a fingerprint and passport photo service open to the public adding additional program revenue.

GirlStrength: A new self defense program offered to young women 13 years of age and older. This program replicates many of the skills learned in the WomenStrength program while addressing the needs of young women in difficult situations.

Hotspot Enforcement Action Team (HEAT): The mission of HEAT is to stem flare-ups of violence, particularly gang and youth violence, by maintaining a high-profile, uniformed presence in neighborhoods, parks and problem areas. In addition to focusing on youth violence, members of HEAT also conduct missions to address other crime issues including theft from vehicles.

Mobile Digital Computers (MDCs): After months of research and development on the Police Bureau's MDC replacement project nearly all the Bureau's patrol vehicles have been outfitted with new ruggedized laptop computers. The project is expected to be complete by the end of February 2009 with 325 MDCs installed.

Portland Interdiction Task Force (PIT): On July 1, 2008 PIT joined the Oregon State Police Financial Investigations Strike Team to form a statewide interdiction task force, the High Intensity Drug Trafficking Areas Interdiction Task Force (HIT). It is the mission of HIT to interdict illegal narcotics and drug proceeds transported via air, rail, bus, vehicle, and packages that are destined to, originating from, or being transported through Portland.

Property room: The new Property Evidence facility in the Northwest Industrial area of Portland was completed in April of 2008. Over a 10 day period more than 300,000 items of evidence were transferred to the new facility. During the move the Property Evidence Division remained open for business as usual.

Prostitution sweeps: Since the establishment of the enhanced enforcement missions, officers from three precincts have staffed a patrol unit designed to reduce prostitution and prostitution related crime on 82nd Avenue. The Police Bureau continues to conduct missions and is currently working with community partners to identify and develop the services necessary to assist individuals out of the sex trade.

Recruitment coordinator: The Police Bureau appointed a recruitment coordinator charged with streamlining and enhancing recruitment efforts. Partnering with the Oregon National Guard the Bureau began a recruitment campaign for military personnel returning from deployment overseas.

Recruitment and hiring: Partnering with the U.S. Military the Police Bureau conducted specialized recruitments for military reservists. In an outreach effort the Bureau also partnered with Bustos Media to recruit members of the Hispanic community. In 2008 there were a total of 59 officers hired.

Red light camera expansion: The Police Bureau's Traffic Division worked in collaboration with the City of Portland Office of Transportation to add two of six red light cameras to Portland intersections. This will increase traffic safety at signaled intersections.

Redistricting: After participating in a one-year process to assess precinct and district boundaries, new patrol districts were established. The goal of the project was to balance calls for service between precincts and districts while maintaining efficient response times. The new boundaries went into effect on July 1, 2008.

Restructure of Vice unit: Vice Detail personnel moved to the Detective Division for better support and coordination of criminal compelling prostitution and human trafficking investigations.

Service Coordination Team: Using a collaborative effort with social service providers, the goal of the team is to have a positive impact on livability issues in downtown Portland and inner city neighborhoods. Employing data analysis to identify the chronic criminal offenders in specific neighborhoods, long term strategies are developed to address their underlying criminality. These strategies include providing housing, drug treatment and mental health services.

Z-Man Scholarship Fund: This scholarship campaign supports students who have the focus and determination to be successful in high school and the potential to achieve their goal of attending college. The fund is dedicated to Officer Mark Zylawy who died January 27, 2008, and is a partnership of police, business and community to recognize his police service while striving to improve the organization and community where he worked.

Bureau Awards¹

On Wednesday, January 16, 2008, the Portland Police Bureau held its bi-annual awards ceremony at the David Douglas Performing Arts Center honoring the excellent work of both community and Bureau members. Awards were handed out in nine categories: Civilian Medal – Heroism, Police Medal, Police Star, Life Saving Medal, Distinguished Service Medal, Achievement Medal, Commendation Medal, Unit Commendation and Certificate of Appreciation.

Civilian Medal - Heroism:

Robert Christensen, Justin Fulbright, and Susan Kuhnhausen.

Police Medal:

Sgt. Charles Brown, Ofc. Todd Christensen, Ofc. Carlos Pagan, Ofc. Spencer Sheldon, and Ofc. Robert Wullbrandt.

Police Star:

Sgt. Michael Krantz

Life Saving Medal:

Ofc. John Maul, Ofc. West Helfrich, Ofc. Tim Lowry, Ofc. Phillip Harper, Sgt. Deborah Steigleder, Retired Ofc. Dan Thompson, Ofc. James Nett, and Ofc. Mark Snyder.

Distinguished Service Medal:

Ofc. Raymond Turney and Sgt. Michael Unsworth

Achievement Medal:

Angie Nelson, Sgt. Doug Justus, Ofc. Michael Gallagher, Sgt. Jason Jones, Lynn Fairweather, Ofc. Barry Hosier, Det. Todd Gradwahl, Assistant Chief Brian Martinek, Cmdr. James Ferraris, Capt. Keith Morse, Lt. Robert Heimbach, Lt. Mark Kruger, Acting Lt. Dave Virtue, Sgt. Michael Marshman, Sgt. Scott Johnson, Ofc. Tamara Lee, Ofc. Matthew McDonald, Ofc. Christopher Watts, Terri-Wallo Strauss, Julie Salmon, Ofc. John Billard, Ofc. Lacey Sparling, Ofc. Heath Kula, Ofc. Christopher McDonald, Sgt. David Golliday, Sgt. Erin Smith, Sgt. Robert McCormick, Ofc. Robert Hollins, Ofc. William Winters, Lt. Timothy Sessions, and Ofc. David Dobler

Commendation Medal:

Sgt. Thomas McGranahan, Assistant Chief Lynnae Berg, Cmdr. Bret Smith, Lt. Larry O’Dea, Lt. Arnold Warren, Ofc. Nathan Shropshire, Ofc. Jerrold Higginbotham, Michael Palmer, Marsha Palmer, David Maller, Veronica Nordeen, Joann Elsner, Joanne Johnson, Peter Bates, Brandi Gilbert, Ofc. Robert Pickett, and Havilah Ferschweiler.

Unit Commendation:

Traffic Division Motorcycle Training Unit

Certificate of Appreciation:

Dianne Parks, Cheri Konst, James Fairbanks, PCC Ofc. Todd Johnson, Ofc. Steven Johns, Ofc. Robert Quick, Sgt. James Simms, Ofc. John Blair, Ofc. Billy Wells, and Charles Dorris Jr.

Bureau Awards

On Thursday, June 19, 2008 the Portland Police Bureau held its bi-annual awards ceremony at the David Douglas Performing Arts Center honoring the excellent work of both community and Bureau members. Awards were handed out in seven categories: Police Medal, Police Star, Life Saving Medal, Achievement Medal, Commendation Medal, Unit Commendation and Certificate of Appreciation.

Police Medal:

Sgt. Todd Davis, Ofc. Phillip Harper, Ofc. Christopher Kulp, Sgt. Jeffrey Bell, Sgt. Craig Mendenhall, and Ofc. Paul Park.

Police Star:

Ofc. Brian Hunzeker

Life Saving Medal:

Ofc. Kevin Felts, Ofc. Caralyne Sweeney, Shannon Worley, Ofc. Joshua Howery, Ofc. William Ollenbrook, Ofc. Jason Hubert, Ofc. Troy Gauger, Ofc. Jason Harris, Ofc. Daniel Peterson, and Retired Sgt. Mark Schaffer.

Achievement Medal:

Ofc. Erin Anderson, Criminalist Ken Jones, Ofc. Darke Hull, Ofc. Bridget Sickon, Ofc. Scott McCollister, Ofc. Phillip Kent, Ofc. Kimberly Adams, Christopher Paille, Ofc. Chad Stoner, Ofc. Nathan Tobey, Kimberly Yada, and Sgt. Donald Livingston.

Commendation Medal:

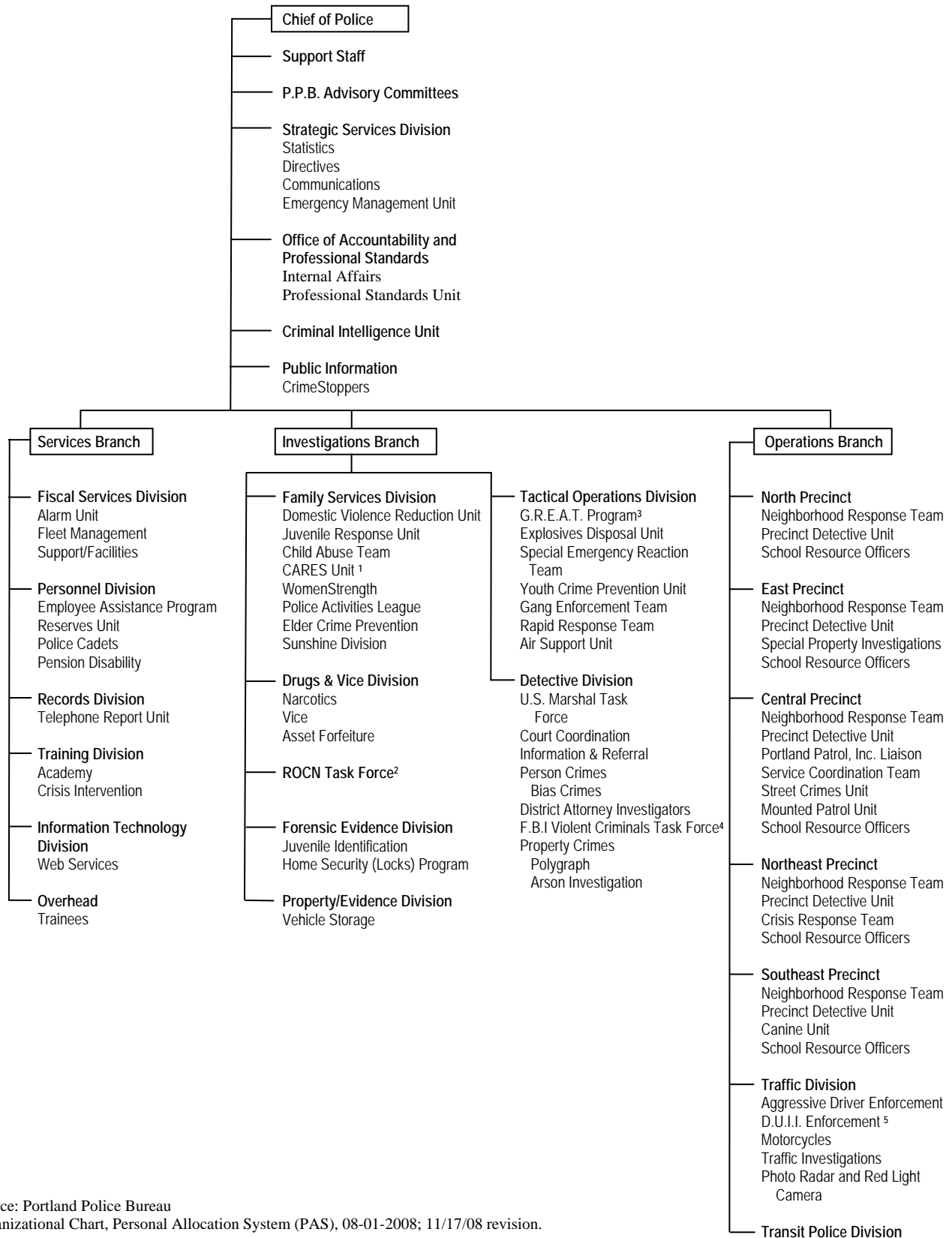
Kris Henning, Mike Malchow-Hay, Doug Clem, Walter Berglinger, Kathryn Elise Worland, Ofc. Angel Ocasio, Gary Sjolander, Donald Kenyon, and Jacob MacIntyre.

Unit Commendation:

Metro Gang Task Force, Gang Enforcement Team, Sunshine Division, and Youth Forum Project Group.

Certificate of Appreciation:

Aaron Hodges and Derek Haevischer.



Source: Portland Police Bureau
Organizational Chart, Personal Allocation System (PAS), 08-01-2008; 11/17/08 revision.

Footnotes: See page 19, Organizational Chart

Personnel Distribution

6

	Chief & Asst. Chiefs	Cmdr.	Capt.	Lt.	Sgt.	Det.	Crmlst.	Officer	Total Sworn	Total Non Sworn	Total
Chief's Branch											
Chief's Office	4	0	0	2	3	0	0	6	15	7	22
Strategic Services	0	0	1	0	2	0	0	2	5	8	13
Office of Accountability & Professional Standards	0	0	1	1	3	0	0	0	5	14	19
Operations Branch											
Central Precinct	0	1	0	3	17	4	0	115	140	15	155
East Precinct	0	1	0	3	17	8	0	146	175	10	185
North Precinct	0	1	0	2	7	3	0	56	69	7	76
Northeast Precinct	0	1	0	3	14	4	0	105	127	11	138
Southeast Precinct	0	1	0	3	17	4	0	122	147	9	156
Traffic Division	0	0	1	1	6	0	0	41	49	3	52
Transit Police	0	1	0	2	3	0	0	17	23	1	24
Investigations Branch											
Detective Division	0	1	0	2	8	55	0	5	71	17	88
Drugs & Vice Division	0	0	1	1	6	0	0	23	31	13	44
Family Services Div.	0	0	1	1	3	12	0	12	29	4	33
Forensic Evidence Div.	0	0	1	0	2	0	17	0	20	27	47
Property Evidence	0	0	0	0	0	0	0	0	0	17	17
ROCN Task Force	0	1	0	0	0	0	0	0	1	0	1
Sunshine Division*	0	0	0	0	0	0	0	1	1	0	1
Tactical Operations Div.	0	1	0	2	10	3	0	23	39	5	44
Services Branch											
Fiscal Services Division	0	0	0	0	0	1	0	0	1	19	20
Information Technology	0	0	0	0	0	0	0	0	0	2	2
Management Services	0	0	0	0	0	0	0	0	0	3	3
Personnel Division	0	0	0	1	2	0	0	6	9	19	28
Records Division	0	0	1	0	1	0	0	8	10	74	84
Trainees / Overhead	0	0	0	0	0	0	0	15	15	0	15
Training Division	0	1	0	2	5	0	0	15	23	10	33
Totals	4	10	7	29	126	94	17	718	1,005	295	1,300

Source: Portland Police Bureau Organizational Chart, 08-01-2008.

The table represents budget authority (authorized) positions including frozen contingency positions.

*Sunshine Division is part of Family Services Division.

Footnotes: See page 19, Personnel Distribution

Bureau Budget (in millions)	FY04-05	FY05-06	FY06-07	FY07-08	FY08-09
General Fund	\$117.7	\$117.6	\$123.3	\$128.4	\$135.3
Grants	\$3.2	\$3.7	\$1.5	\$1.1	\$1.8
Program Revenue	\$10.8	\$11.1	\$16.3	\$14.8	\$15.9
Total	\$131.7	\$132.4	\$141.1	\$144.3	\$153.0

Fiscal Year = July 1 – June 30; Adopted budget

Calls for Service

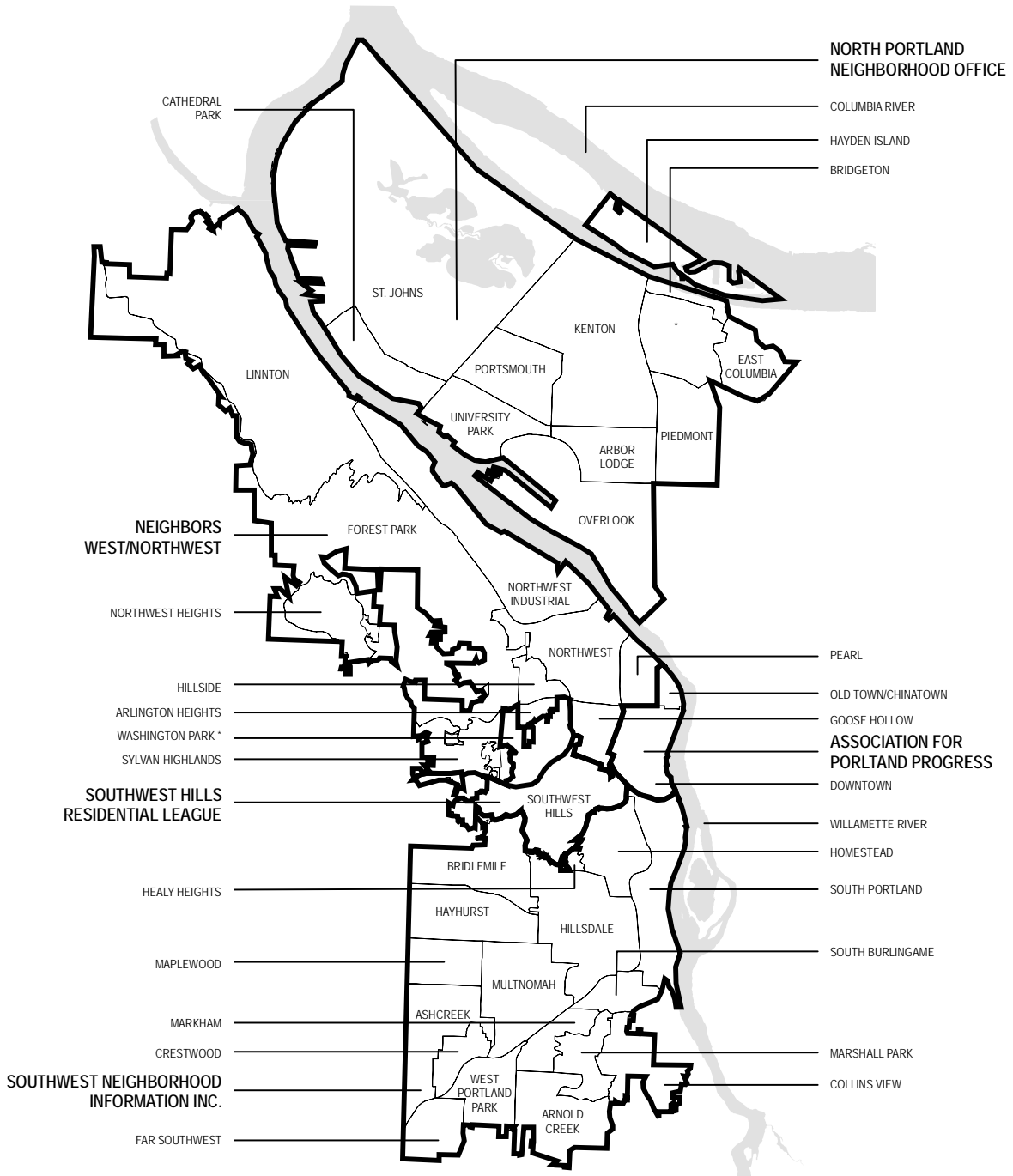
7

	2004	2005	2006	2007	2008
Dispatched Calls ¹	259,661	244,335	227,029	219,840	213,723
Rate of Dispatched Calls Per 1,000 Citizens	472	439	403	387	371
Self Initiated Calls	173,269	189,861	193,383	190,705	185,038
Officers per 1,000 Citizens	1.81	1.79	1.80	1.76	1.75
Citizens Residing in Bureau's Service Area ²	550,560	556,370	562,690	568,380	575,930
Telephone Report Unit Calls for Service ³	25,486	30,219	30,317	33,804	26,056
Information and Referral Calls	138,543	131,747	121,760	108,587	93,537

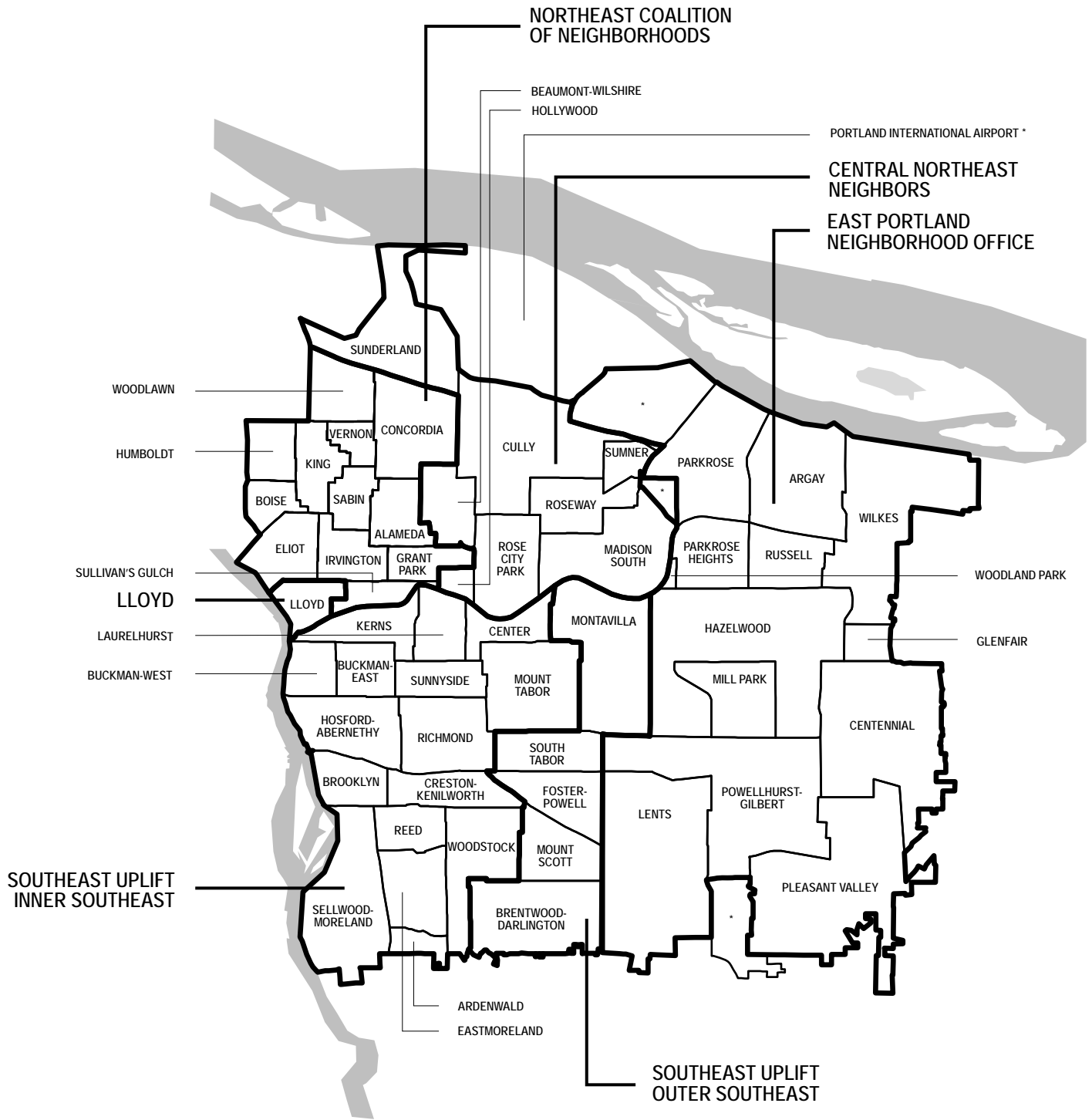
Part I Crimes⁴

	2004	2005	2006	2007	2008	Percent Change 2007-2008
Crimes Against Persons						
Murder ⁵	29	22	23	28	24	-14%
Rape	313	325	293	280	250	-11%
Robbery	1,291	1,139	1,299	1,291	1,134	-12%
Aggravated Assault	2,405	2,376	2,262	2,110	2,037	-3%
Total Person Crimes	4,038	3,862	3,877	3,709	3,445	-7%
Rate of Person Crimes per 1,000 population	7	7	7	7	6	
Crimes Against Property						
Burglary	7,259	6,142	5,500	4,857	4,322	-11%
Larceny	28,452	25,941	22,125	22,070	21,698	-2%
Motor Vehicle Theft	6,052	5,834	4,557	4,844	3,406	-30%
Arson	363	375	408	331	303	-8%
Total Property Crimes	42,126	38,292	32,590	32,102	29,729	-7%
Rate of Property Crimes per 1,000 population	77	69	58	56	52	
Total Part I-Crimes	46,164	42,154	36,467	35,811	33,174	-7%
Rate of total Part I-Crimes per 1,000 population	84	76	65	63	58	
Citizens Residing in Bureau's Service Area ²	550,560	556,370	562,690	568,380	575,930	+1%

Footnotes: See page 19, Calls for Service and Part I Crimes



* Not an official Neighborhood Association



* Not an official Neighborhood Association

Reported Offenses per Neighborhood

10

	Murder	Rape	Robbery	Aggravated Assault	Burglary	Larceny	Motor Vehicle Theft	Arson	Total Part I	Total Part II	Total Part III	Grand Total	Rate/1,000 Population
North													
Arbor Lodge	0	3	30	12	52	431	34	4	566	415	942	1,923	317.1
Bridgeton	0	0	0	0	5	39	6	1	51	13	62	126	342.4
Cathedral Park	0	0	7	22	23	161	19	8	240	270	724	1,234	406.9
Columbia (East)	0	0	0	2	1	15	0	0	18	31	76	125	166.0
Hayden Island	1	1	13	11	26	333	75	1	461	180	530	1,171	549.8
Kenton	0	3	23	25	65	271	59	3	449	523	1,666	2,638	380.4
Overlook	0	2	12	21	66	251	44	2	398	345	1,110	1,853	304.1
Piedmont	1	0	14	18	70	142	36	1	282	375	898	1,555	241.1
Portsmouth	0	3	13	49	74	209	68	7	423	646	1,567	2,636	317.4
St Johns	1	3	35	62	108	406	76	16	707	899	2,350	3,956	348.7
University Park	0	1	6	15	18	134	26	1	201	134	339	674	128.4
Total North	3	16	153	237	508	2,392	443	44	3,796	3,831	10,264	17,891	315.4
Inner Northeast													
Alameda	0	1	1	3	26	71	16	1	119	72	161	352	67.9
Boise	1	2	11	21	43	81	23	0	182	335	822	1,339	437.7
Concordia	0	2	7	26	86	287	38	5	451	408	896	1,755	183.5
Eliot	0	4	15	24	42	205	55	3	348	403	1,286	2,037	606.4
Grant Park	0	0	2	7	27	89	7	0	132	120	327	579	165.0
Humboldt	0	2	12	42	49	165	22	9	301	360	862	1,523	300.9
Irrington	0	0	7	14	42	137	28	1	229	171	514	914	136.7
King	0	2	24	44	105	256	21	1	453	583	1,695	2,731	474.6
Lloyd	0	0	36	22	34	976	78	5	1,151	774	1,490	3,415	5,644.6
Sabin	0	1	3	13	52	117	14	1	201	143	293	637	156.8
Sullivan's Gulch	0	0	14	10	21	225	46	1	317	276	672	1,265	415.7
Vernon	0	0	7	10	38	85	7	1	148	157	432	737	237.1
Woodlawn	0	1	8	15	51	125	19	4	223	256	775	1,254	256.5
Total Inner NE	1	15	147	251	616	2,819	374	32	4,255	4,058	10,225	18,538	320.3
Central Northeast													
Beaumont-Wilshire	0	0	5	2	29	83	15	0	134	122	264	520	94.6
Cully	0	4	14	61	103	349	55	5	591	878	2,324	3,793	292.5
Hollywood	0	0	8	7	27	158	19	1	220	206	562	988	927.7
Madison South	0	3	16	31	52	170	31	3	306	567	1,582	2,455	351.6
Rose City Park	0	1	11	7	45	168	29	0	261	230	614	1,105	124.1
Roseway	0	3	12	18	56	196	30	0	315	272	770	1,357	219.4
Sumner	0	2	6	6	16	40	10	0	80	156	458	694	330.9
Sunderland	0	0	1	7	12	77	20	0	117	65	203	385	658.1
Total Central NE	0	13	73	139	340	1,241	209	9	2,024	2,496	6,777	11,297	255.1
East Portland													
Argay	0	3	14	25	65	239	52	5	403	305	714	1,422	245.7
Centennial	4	14	41	89	232	723	132	14	1,249	1,320	3,123	5,692	252.2
Glenfair	1	1	7	27	40	101	30	3	210	265	713	1,188	461.4
Hazelwood	2	7	77	92	204	1,482	215	15	2,094	1,988	5,077	9,159	459.9
Lents	1	12	42	102	145	832	163	11	1,308	1,338	3,858	6,504	354.3

Reported Offenses per Neighborhood, cont.

11

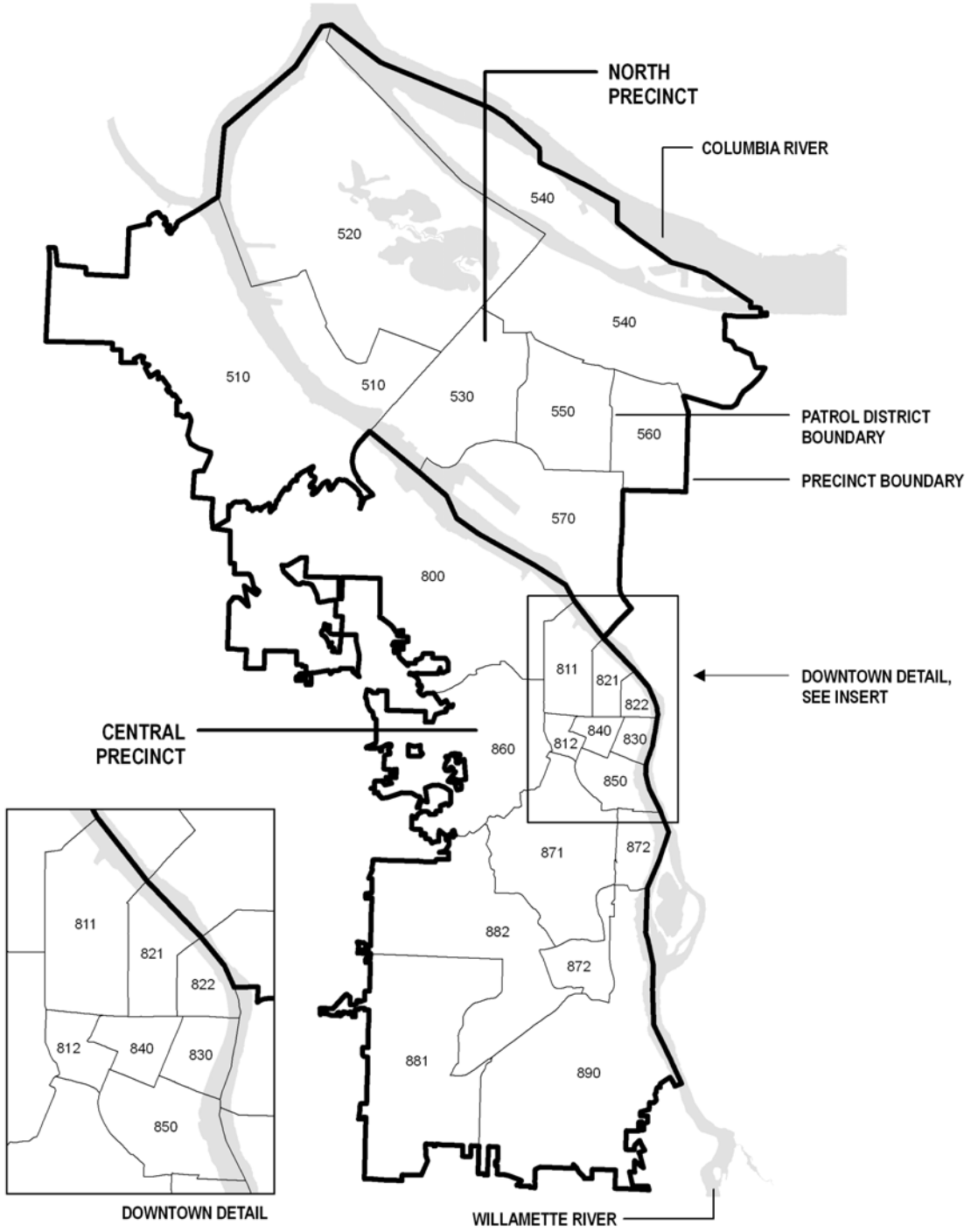
	Murder	Rape	Robbery	Aggravated Assault	Burglary	Larceny	Motor Vehicle Theft	Arson	Total Part I	Total Part II	Total Part III	Grand Total	Rate\1,000 Population
Mill Park	0	1	23	37	72	292	45	2	472	555	1,601	2,628	379.2
Parkrose	0	4	16	16	56	368	89	4	553	593	1,621	2,767	457.4
Parkrose Heights	0	1	14	18	49	120	35	2	239	265	688	1,192	195.6
Pleasant Valley	0	2	0	14	40	94	34	0	184	192	518	894	211.0
Powellhurst-Gilbert	1	7	42	125	193	657	150	11	1,186	1,569	3,988	6,743	374.9
Russell	0	1	9	12	20	172	30	2	246	197	424	867	264.3
Wilkes	0	2	8	15	49	150	64	3	291	242	654	1,187	155.7
Woodland Park	0	1	0	2	1	8	2	0	14	17	34	65	215.2
Total E Portland	9	56	293	574	1,166	5,238	1,041	72	8,449	8,846	23,013	40,308	331.2
Inner Southeast													
Ardenwald	0	0	0	0	2	13	1	0	16	8	46	70	151.2
Brooklyn	0	0	9	7	30	108	22	0	176	127	481	784	221.3
Buckman-East	0	3	3	11	43	191	44	6	301	358	881	1,540	222.5
Buckman-West	1	2	17	26	31	368	31	9	485	844	1,702	3,031	3,025.0
Center	0	2	5	15	21	123	27	0	193	227	712	1,132	240.8
Creston-Kenilworth	0	3	13	26	34	180	40	3	299	357	979	1,635	198.6
Eastmoreland	0	0	1	5	20	92	11	1	130	76	129	335	71.8
Hosford-Abernethy	0	2	7	12	45	267	44	6	383	362	1,071	1,816	262.0
Kerns	0	3	11	16	43	244	56	7	380	369	1,044	1,793	351.9
Laurelhurst	2	0	1	2	43	76	12	0	136	101	416	653	143.5
Mt Tabor	0	1	8	11	52	205	37	1	315	193	585	1,093	108.9
Reed	0	1	2	2	21	71	29	1	127	68	143	338	101.0
Richmond	0	3	8	24	59	239	46	4	383	351	965	1,699	150.1
Sellwood-Moreland	0	2	9	18	72	295	60	2	458	332	841	1,631	155.7
Sunnyside	1	0	20	17	29	240	37	4	348	358	863	1,569	219.3
Woodstock	0	1	6	11	53	185	25	0	281	236	655	1,172	138.3
Total Inner SE	4	23	120	203	598	2,897	552	44	4,411	4,367	11,513	20,291	209.4
Outer Southeast													
Brentwood-													
Darlington	1	5	10	43	71	178	53	6	367	553	1,404	2,324	202.7
Foster-Powell	0	0	20	27	77	305	41	2	472	477	1,179	2,128	288.8
Montavilla	1	6	37	73	127	440	126	6	816	1,286	3,593	5,695	356.2
Mt Scott	1	1	9	18	49	173	54	4	309	362	925	1,596	219.6
South Tabor	0	1	7	12	31	186	38	1	276	302	749	1,327	216.4
Total Outer SE	3	13	83	173	355	1,282	312	19	2,240	2,980	7,850	13,070	271.1
Southwest													
Arnold Creek	0	0	0	1	1	23	1	0	26	18	57	101	34.5
Ashcreek	0	1	1	2	11	19	3	1	38	59	151	248	52.3
Bridlemile	1	0	0	5	15	56	2	0	79	89	199	367	73.3
Collins View	0	0	1	0	15	82	2	0	100	106	145	351	170.8
Crestwood	0	0	1	0	0	4	0	1	6	20	37	63	64.3
Far Southwest	0	0	0	1	7	61	0	0	69	31	89	189	153.0
Hayhurst	0	3	0	4	13	32	9	0	61	71	189	321	61.9

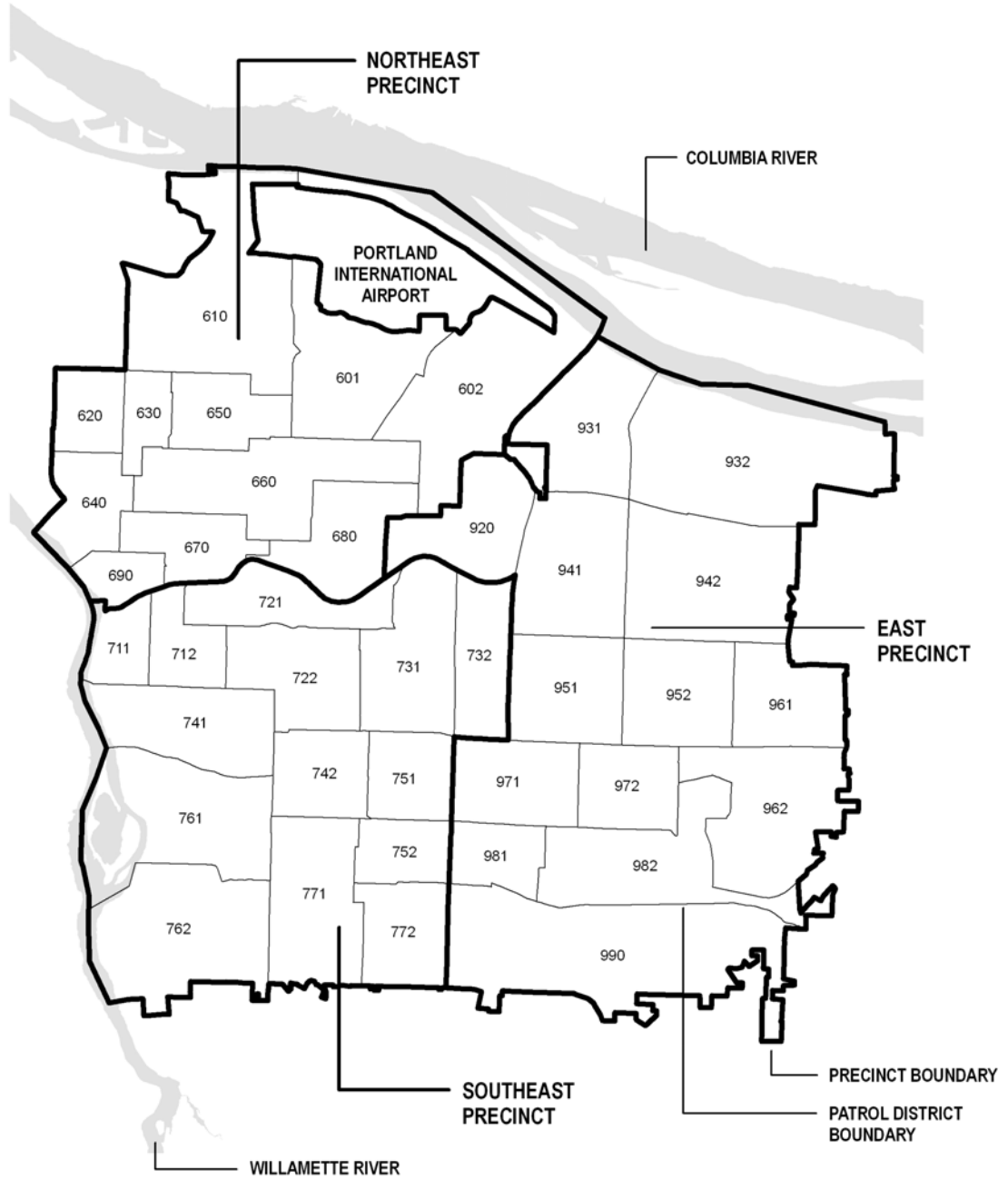
Reported Offenses per Neighborhood, cont.

12

	Murder	Rape	Robbery	Aggravated Assault	Burglary	Larceny	Motor Vehicle Theft	Arson	Total Part I	Total Part II	Total Part III	Grand Total	Rate\1,000 Population
Healy Heights	0	0	0	0	0	2	1	0	3	1	6	10	45.2
Hillsdale	1	0	2	7	29	100	13	1	153	162	454	769	103.4
Homestead	0	1	0	1	9	120	6	1	138	90	309	537	210.1
Maplewood	0	0	0	0	1	20	2	1	24	22	63	109	42.6
Markham	0	0	0	3	3	16	1	0	23	33	63	119	51.2
Marshall Park	0	0	0	1	2	11	0	0	14	10	24	48	33.6
Multnomah	1	2	2	8	29	110	18	2	172	169	499	840	126.8
South Burlingame	0	0	0	2	7	11	0	0	20	23	84	127	99.3
South Portland	0	0	1	3	34	158	17	2	215	210	600	1,025	201.8
Southwest Hills	0	0	0	1	17	57	13	0	88	55	146	289	71.3
W Portland Park	0	3	4	6	11	52	4	3	83	142	347	572	151.1
Total Southwest	3	10	12	45	204	934	92	12	1,312	1,311	3,462	6,085	102.3
Northwest													
Arlington Heights	0	0	0	0	12	9	1	0	22	10	25	57	82.5
Forest Park	0	0	0	2	13	95	4	0	114	32	146	292	308.0
Goose Hollow	0	0	17	15	47	226	27	3	335	394	994	1,723	317.1
Hillside	0	0	0	0	4	26	3	0	33	9	50	92	71.6
Linnton	0	0	0	3	7	70	5	2	87	36	193	316	362.0
Northwest	0	2	30	32	105	760	102	17	1,048	886	1,820	3,754	302.5
NW Heights	0	0	0	0	0	17	0	1	18	17	42	77	30.6
NW Industrial	0	0	2	3	5	26	6	2	44	50	141	235	11,190.5
Pearl	0	5	21	31	35	409	41	2	544	667	1,924	3,135	2,816.7
Sylvan-Highlands	0	0	1	2	10	49	3	0	65	25	87	177	153.4
Total Northwest	0	7	71	88	238	1,687	192	27	2,310	2,126	5,422	9,858	372.8
Downtown													
Downtown	0	9	105	106	124	1,739	113	22	2,218	3,088	7,733	13,039	1,308.5
Old Town/ Chinatown	0	4	39	94	13	265	23	1	439	2,328	4,736	7,503	2,573.0
Total Downtown	0	13	144	200	137	2,004	136	23	2,657	5,416	12,469	20,542	1,594.8
Unknown/ No Neighborhood	1	53	30	83	74	828	100	8	1,177	1,637	13,571	16,385	

Note: Rates are based on 2000 U.S. Census residential population data. Many factors can influence the Rate/1000 Population calculations and can affect meaningful comparisons among neighborhoods. For example, the large work force in the Lloyd, Downtown, Old Town/Chinatown, Pearl and Northwest Industrial neighborhoods can distort the crime rate for those areas.





Reported Offenses per Patrol District

15

	Murder	Rape	Robbery	Aggravated Assault	Burglary	Larceny	Motor Vehicle Theft	Arson	Total Part I	Total Part II	Total Part III	Grand Total
North Precinct												
510	0	2	25	39	69	408	45	16	604	564	1,597	2,765
520	1	1	17	48	73	231	55	10	436	645	1,672	2,753
530	0	4	19	65	93	344	94	8	627	780	1,907	3,314
540	1	3	16	26	55	585	112	4	802	430	1,512	2,744
550	0	4	32	20	75	316	60	4	511	563	1,612	2,686
560	1	1	33	31	84	432	45	1	628	675	1,655	2,958
570	0	3	13	28	90	287	55	4	480	412	1,351	2,243
North Totals	3	18	155	257	539	2,603	466	47	4,088	4,069	11,306	19,463
Northeast Precinct												
601	0	5	6	32	69	236	32	2	382	553	1,307	2,242
602	0	5	21	39	85	377	75	3	605	656	1,986	3,247
610	0	3	12	33	103	315	60	5	531	522	1,433	2,486
620	0	4	17	51	83	237	37	9	438	536	1,281	2,255
630	0	0	22	46	113	251	24	1	457	490	1,524	2,471
640	1	6	22	38	63	225	55	3	413	663	1,883	2,959
650	0	0	10	22	83	290	30	5	440	377	880	1,697
660	0	2	12	28	131	353	50	2	578	480	1,145	2,203
670	0	0	18	29	76	419	83	2	627	431	1,246	2,304
680	0	1	23	20	81	404	55	1	585	508	1,348	2,441
690	0	0	43	25	34	982	81	5	1,170	887	1,864	3,921
NE Totals	1	26	206	363	921	4,089	582	38	6,226	6,103	15,897	28,226
Southeast Precinct												
711	1	5	20	37	33	428	43	11	578	1,036	2,294	3,908
712	0	3	8	18	61	330	65	9	494	465	1,235	2,194
721	2	3	12	17	78	265	67	2	446	432	1,424	2,302
722	1	3	28	29	74	362	54	4	555	547	1,558	2,660
731	0	4	19	40	87	338	76	4	568	648	1,553	2,769
732	1	2	21	46	75	221	68	4	438	775	2,455	3,668
741	0	3	9	17	70	387	68	7	561	535	1,451	2,547
742	0	2	11	31	52	235	56	7	394	424	1,205	2,023
751	0	0	15	20	64	243	51	1	394	436	1,112	1,942
752	1	1	17	23	60	316	57	3	478	464	1,113	2,055
761	0	4	19	26	84	340	91	3	567	448	1,335	2,350
762	0	1	9	19	79	329	51	2	490	354	830	1,674
771	0	1	8	22	76	254	45	2	408	373	1,041	1,822
772	1	5	10	37	61	146	43	5	308	505	1,255	2,068
SE Totals	7	37	206	382	954	4,194	835	64	6,679	7,442	19,861	33,982
Central Precinct												
800	0	1	4	7	42	222	28	7	311	201	544	1,056
811	0	1	28	30	73	640	80	10	862	750	1,591	3,203
812	0	0	7	10	36	119	19	1	192	187	492	871
821	0	2	16	20	26	349	28	2	443	433	1,471	2,347
822	0	7	38	85	13	260	29	1	433	2,284	4,767	7,484

Reported Offenses per Patrol District, cont.

16

	Murder	Rape	Robbery	Aggravated Assault	Burglary	Larceny	Motor Vehicle Theft	Arson	Total Part I	Total Part II	Total Part III	Grand Total
Central Precinct, cont.												
830	0	3	60	67	24	657	47	1	859	1,755	3,472	6,086
840	0	2	42	36	52	594	30	14	770	1,094	2,731	4,595
850	0	4	19	28	55	586	44	9	745	699	2,451	3,895
860	0	0	2	2	45	244	20	3	316	167	599	1,082
871	0	1	0	4	37	222	23	1	288	198	693	1,179
872	1	0	1	7	20	80	10	2	121	161	575	857
881	0	4	10	12	35	232	21	8	322	342	909	1,573
882	2	5	2	19	66	192	33	0	319	395	1,045	1,759
890	0	0	2	6	49	254	9	1	321	290	557	1,168
Central Totals	3	30	231	333	573	4,651	421	60	6,302	8,956	21,897	37,155
East Precinct												
920	0	3	17	32	51	177	34	3	317	572	1,661	2,550
931	0	4	16	16	56	368	89	4	553	606	1,764	2,923
932	0	4	19	35	87	334	89	6	574	460	1,110	2,144
941	0	4	50	52	115	1,009	137	9	1,376	1,122	2,788	5,286
942	3	3	20	35	98	381	108	9	657	629	1,563	2,849
951	0	3	34	40	91	494	75	1	738	826	2,440	4,004
952	0	4	25	65	108	363	68	10	643	833	2,261	3,737
961	5	5	23	48	116	296	63	7	563	722	1,809	3,094
962	0	9	26	56	136	462	85	5	779	694	1,681	3,154
971	0	2	25	53	58	528	73	4	743	780	2,217	3,740
972	1	2	26	69	100	356	76	4	634	765	1,914	3,313
981	0	5	18	31	42	202	55	6	359	433	1,359	2,151
982	0	4	2	36	77	225	63	7	414	523	1,298	2,235
990	1	7	10	47	101	276	74	2	518	608	1,667	2,793
East Totals	10	59	311	615	1,236	5,471	1,089	77	8,868	9,573	25,532	43,973
Unknown/ Not Portland District	0	49	17	43	13	314	28	4	468	925	10,073	11,466

Adult and Juvenile Arrests

	2004	2005	2006	2007	2008
Juvenile					
Part I	1,505	1,339	1,238	1,208	1,249
Part II	2,508	2,833	2,860	2,070	1,772
Part III	800	757	717	649	607
Total Juvenile	4,813	4,929	4,815	3,927	3,628
Adult					
Part I	7,061	6,599	5,988	5,875	5,937
Part II	18,029	19,582	19,304	17,583	17,183
Part III	6,644	6,790	6,115	8,969	8,728
Total Adult	31,734	32,971	31,407	32,427	31,848

Source: Portland Police Data System (PPDS); Juvenile: age 17 and younger. For Definitions: See Appendix A

Arrests

17

	Adults Arrested	Juveniles Arrested	Total Arrests in 2008
Part I Crime Arrests			
Willful Criminal Homicide	19	0	19
Rape	41	7	48
Robbery	283	78	361
Aggravated Assaults	530	75	605
Burglary	376	76	452
Larceny	4,282	960	5,242
Motor Vehicle Theft	360	44	404
Arson	46	9	55
Total Part I Arrests	5,937	1,249	7,186
Part II Crime Arrests			
Simple Assaults	3,305	234	3,539
Forgery	238	2	240
Fraud	292	18	310
Stolen Property	33	6	39
Vandalism	609	240	849
Weapon Laws	313	60	373
Prostitution	542	18	560
Sex Crimes	207	22	229
Drug Laws			
Opium	1	0	1
Heroin	438	3	441
Morphine	3	0	3
Cocaine	1,211	8	1,219
Codeine	32	3	35
Hashish	10	2	12
Marijuana	710	85	795
Synthetic Drugs	33	0	33
Dangerous Drugs	594	2	596
Other Drug Laws	48	2	50
Drug Laws Total	3,080	105	3,185
Gambling	2	0	2
Family Offenses	13	0	13
Driving Under the Influence of Intoxicants	1,955	15	1,970
Liquor Laws	3,685	178	3,863
Disorderly Conduct	1,070	142	1,212
Kidnapping	5	0	5
Curfew	4	249	253
Runaway	1	349	350
All Others	1,829	134	1,963
Total Part II Arrests	17,183	1,772	18,955
Part III Crime Arrests			
Miscellaneous Traffic	1,426	29	1,455
Protective Custody	0	304	304
Other Custody	2	0	2
Warrants	4,398	65	4,463
Fugitives	2,902	209	3,111
Total Part III Arrests	8,728	607	9,335
Grand Total	31,848	3,628	35,476

Footnotes: See page 19, Arrests

Aggravated Assault: An attack by one person upon another with intent to inflict severe bodily injury. This type of assault usually is accompanied by the use of a weapon or by means likely to produce death or injury.

All Other Offenses: Except Traffic - Includes trespass, blackmail, bomb threat, animal ordinances, and littering.

Arrest: The actual number of persons arrested (both booked and taken into custody; and cited and released) for committing criminal acts.

Arson: Any willful burning or attempt to burn a building, motor vehicle, aircraft, or personal property of another or your own.

Burglary: The unlawful entry of a structure (both residential and non-residential) with intent to commit a theft.

Car Prowl: Theft from a motor vehicle such as a battery, radio, or items inside the vehicle, e.g., laptop, cell phone.

Crimes Against Persons: Criminal offenses where the victim is present and the act is violent, threatening or has the potential of being physically harmful.

Crimes Against Property: Offenses that involve taking something of value by theft or deception or the destruction of property.

Disorderly Conduct: In this classification are placed all offenses of committing a breach of the peace.

Drug Laws: Included are all violations of state and local laws, specifically those related to the unlawful possession, sale, use, growing, manufacturing, and making of illegal drugs.

Driving Under the Influence of Intoxicants (D.U.I.): Driving or operating any vehicle while under the influence of liquor or drugs.

Embezzlement: Misappropriation of money or property entrusted to one's care.

Extortion: The use of fear of death, injury, property loss, reputation, etc. to induce or compel another to deliver property or perform some act or omission.

Family Offenses: Included here are offenses such as abandonment, neglect of children, custodial interference and non-support. (Physical abuse would be reported as an assault).

Forgery also Forgery/Counterfeiting: Forgery and counterfeiting are treated as allied offenses. In this classification are placed all offenses dealing with the making, altering, or possessing, with intent to defraud, anything false in the semblance of that which is true.

Fraud: Fraudulent conversion and obtaining money or property by false pretenses.

Fugitives: This category covers arrests made for other agencies and may be for: Parole/Probation violation, AWOL (absence without leave) from a penal institution, etc.

Gambling: All offenses which relate to promoting, permitting, or engaging in gambling are included in this category.

Homicide: Includes willful murder and aggravated murder.

Kidnapping: The interference with another person's liberty without consent or legal authority.

Larceny: The unlawful taking of property from the possession of another; includes pickpocket, pursesnatch, shoplift, bike theft, and theft from motor vehicle (car prowler).

Liquor Laws: With the exception of Driving Under the Influence all liquor law violations, state or local, are placed in this classification.

Miscellaneous Traffic Crimes: Serious traffic offenses which are classified as a misdemeanor or felony as defined by the Oregon Motor Vehicle Code.

Motor Vehicle Theft: The theft or attempted theft of a motor vehicle; includes motorcycles.

Murder: The willful (non-negligent) killing of one human being by another.

Negligent Homicide: The killing of another person through gross negligence.

Offenses - Excludes motor vehicle traffic death.

Arrests - Includes persons arrested for motor vehicle traffic death.

Offense: The criminal act, the number of criminal acts.

Part I Crimes: A group of crimes which are reported and tracked nationally: murder, rape, robbery, aggravated assault, burglary, larceny, motor vehicle theft, and arson.

Part II Crimes: A group of crimes which are reported and tracked nationally: simple assault, forgery, fraud, stolen property, vandalism, weapon laws, prostitution, sex crimes, drug laws, gambling, family offenses, D.U.I., liquor laws, disorderly conduct, kidnapping, curfew, runaway, and other offenses (see All Other Offenses above).

Part III Crimes: A group of crimes which are reported and tracked within the State of Oregon: includes traffic, warrants, protective custody, fugitives, officer assaults, and property and vehicles recovered for other jurisdictions.

Protective Custody: The custody of persons for detoxification, mental holds, material witness, or protective custody. Examples: transport of an intoxicated subject to the local detoxification center; taking a child into protective custody pending further investigation of the child's care and welfare.

Prostitution: Included in this classification are the sex offenses of a commercialized nature.

Pursesnatch: To snatch a purse from the physical control of another. (If force is directed or used against the victim the matter becomes a robbery).

Rape: The carnal knowledge of a female, forcibly and against her will.

Robbery: The taking or attempting to take anything of value from a person or persons by force or threat of force.

Runaway: When a juvenile has departed from some location within Multnomah County and the juvenile's parents or guardians have reported them as a runaway.

Sex Crimes: Covers offenses such as statutory rape, contributing to the sexual delinquency of a minor, non-forcible rape, incest, molest, indecent exposure, forcible and non-forcible sodomy, obscene phone calls. (Does not include forcible rape, or prostitution).

Simple Assault: Assaults which are limited to the use of physical force and result in little or no injury to the victim.

Stolen Property Offenses: Included in this classification are all offenses of buying, receiving and possessing stolen property, as well as all attempts to commit any of these offenses.

Vandalism: Consists of the willful destruction, or defacement of property.

Warrants: Includes service of warrants of arrest and related papers for Multnomah County, as well as all other jurisdictions within the United States.

Weapons Regulation Laws: Deals with weapon offenses which are regulatory in nature, such as: furnishing a deadly weapon to a minor; excon or alien in possession of a firearm.

Willful Murder and Non Negligent Manslaughter: The willful (non-negligent) killing of one human being by another.

Appendix A Source:

Oregon Law Enforcement Data System (LEDS); Portland Police Data System. These definitions are not intended to serve as legal definitions.

Recognition and Awards, Page 3:

1. Definitions of the Bureau Awards may be found on the Police Bureau's Internet site: <http://www.portlandpolicebureau.com>.

Organizational Chart, Page 5:

1. Child Abuse Response Evaluation Services 2. Regional Organized Crime and Narcotics 3. Gang Resistance Education and Training
4. Federal Bureau of Investigation 5. Driving Under the Influence of Intoxicants

Personnel Distribution, Page 6:

Asst. Chief = Assistant Chief, Cmdr. = Commander, Capt. = Captain, Lt. = Lieutenant, Sgt. = Sergeant, Det. = Detective, Crmlst. = Criminalist

Personnel numbers reflect budgeted authority (authorized) figures, which include vacancies, but do not include overhires.

Calls for Service and Part I Crimes, Page 7:

1. Data on "Dispatched Calls" are from BOEC (Bureau of Emergency Communication) Computer Aided Dispatch (CAD) System and include all calls to 9-1-1 and non-emergency calls for which a patrol car was dispatched.
2. Population numbers are for July 1 of the given year and are from Portland State University, Population Research Center.
3. TRU calls are calls for service which are handled by the Telephone Report Unit, either by giving advice, taking a report, or mailing a report form for the complainant to complete and return. Excluded are calls that were initially screened by TRU officers for which a patrol car was subsequently dispatched.
4. Part I Crime data are from Oregon Law Enforcement Data System (LEDS). Included are actual offenses known to the police. Reported offenses which upon investigation are unfounded or baseless are not included. For definitions of crimes see Appendix A.
5. Murder includes willful criminal homicide, but not homicide through negligence.

Arrests, Page 17:

Source: Portland Police Data System

For definitions: See Appendix A

Footnote: Records Division began classifying warrant arrests differently in 2007.



Dan Saltzman, Commissioner
Roseanne M. Sizer, Chief of Police

This report was produced by the Strategic Services Division.

Portland Police Bureau
1111 S.W. 2nd Avenue
Portland, OR 97204
(503) 823-0283

<http://www.portlandpolicebureau.com>

Printed on recycled paper