

**Portland Police Bureau  
1993 Statistical Report**

**Table of Contents**

Letter From Chief Moose ..... 1  
Significant Events ..... 2,3  
Organizational Chart ..... 4  
Personnel Distribution ..... 5  
Dispatched Calls ..... 6  
Part I Crimes, Crimes Against Persons and Property ..... 7  
Neighborhood Association Map ..... 8,9  
Offenses per Neighborhood ..... 10,11  
Patrol District Map ..... 12,13  
Offenses per Patrol District ..... 14,15  
Assaults on Officers ..... 15  
Arrests ..... 16  
Appendix A, Definitions of Crimes ..... Inside Back Cover  
Information and Referral ..... Back Cover

**1993 Demographics of Portland**

Population<sup>1</sup> ..... 471,325  
Sworn Officers per 1,000 Population ..... 2.02  
Square Miles of Patrol Area<sup>2</sup> ..... 141.1  
Number of Parks<sup>3</sup> ..... 206  
Acres of Parks<sup>3</sup> ..... 9,529

Cover photographs by Pat "Oh Baby" Pollak, © 1994

Footnotes:

1. Center for Population Research and Census, Portland State University.
2. Number of square miles within the Bureau's Service District on July 1, 1993, was provided by the City of Portland, Office of Finance and Administration, Urban Services Program
3. City of Portland, Bureau of Parks and Recreation. Includes natural areas, developed, semi-developed and undeveloped sites as of July, 1993.

Dear Reader:

As 1993 came to a close, the Portland Police Bureau prepared to distribute our 1994-96 Strategic Plan to the community for feedback. Several community members and Bureau members had already come together to write and review early drafts of the plan, and we were ready to learn more about the community's priorities and expectations for our department. Gathering this information — and incorporating it into our plan — is a key component of community policing.

One of the many things we've learned about community policing is that a department is never really "done." Community policing implies continuous quality improvement, a constant challenge to change and improve.

Our challenge internally is to build a sense of teamwork among our own employees to help us work better with the community. Our officers and employees come from the community, and bring with them some of the same biases and competitive spirit that exist in society as a whole. It is our challenge as leaders of the agency to blend all of these individuals together as a team working toward a common goal.

Our community challenge is to improve our service orientation, and continue to create ways that we can work with the community to achieve more results. In this past year, we created the Citizens Police Academy to give citizens an inside look at Bureau training and responsibilities, we began several initiatives to work with the youth and children in our community and we signed dozens of additional partnership agreements to document community policing innovations.

Although we know we have more to do, we are proud of our successes thus far. I think of this quote from Martin Luther King Jr. when determining what is successful: "We are prone to judge success by the index of our salaries or the size of our automobiles, rather than by the quality of our service and relationship to humanity."

A handwritten signature in cursive script that reads "Charles A. Moose".

Chief Charles A. Moose, Ph.D.

---

### **Bureau updates mission, values and goals**

---

In 1993, the Portland Police Bureau began work on updating its Community Policing Transition Plan and creating a Strategic Plan for 1994-96, with five-year goals and objectives.

The Strategic Plan sets forth an updated mission statement:

The mission of the Portland Police Bureau is to maintain and improve community livability by working with all citizens to preserve life, maintain human rights, protect property and promote individual responsibility and community commitment.

The Bureau reaffirmed its values of Service Orientation, Partnership, Empowerment, Problem Solving and Accountability and created four goals: Reduce crime and fear of crime, empower the community, develop and empower personnel and strengthen planning, evaluation and fiscal support. The following are the goals, with 1993 accomplishments:

---

### **Reduce Crime and Fear of Crime**

---

Identify and implement approaches for addressing crime and fear of crime that can more effectively reduce both reported and non-reported crime of all types. Give priority to addressing those crimes and conditions that most directly impact community livability.

#### **Partnerships agreements**

By the end of 1993, more than 60 partnership agreements had been signed and recorded in a reference book of agreements available at precincts. Partnership agreements cover a variety of topics including good neighbor agreements for stores and taverns, solutions for crime problems in housing complexes and the creation of innovative approaches for law enforcement.

The following is a sampling of agreements signed in 1993:

#### **Drug Free Zone**

Old Town/Chinatown Policing Steering Committee, Central Precinct, Hispanics in Unity, Hispanics Roundtable, Chinese American Citizens Alliance and various businesses and agencies in Old Town signed an agreement to diminish illegal drug activity and make residents and visitors feel safer. The agreement endorses the creation of a Drug Free Zone, which allows officers to exclude people from Old Town after an arrest for distributing controlled substances.

#### **Telephonic Search Warrant**

The first search warrant based solely on observations and statements from trained neighbor observers and not on actual buys was put together by the North-Northeast Neighborhood Deputy District Attorney, neighborhood informants and North Precinct officers, detectives and Neighborhood Response Team.

### **Community Proclamation**

Elected officials, police, neighborhood crime prevention representatives and citizens came together to oppose the proliferation of prostitution and adult-oriented businesses in the city's Eastside. The proclamation included support for legislation, enforcement of existing laws and ordinances, funding for rehabilitation programs for prostitution and intervention programs for at-risk girls.

### **Cully Neighborhood/La Villa de Clara Vista**

The coordination of resources to work on the issues of living conditions in a large apartment complex (formerly the Galaxy Apartments) led to the renaming and revitalization of the area now known as the Clara Vista. East Precinct, neighborhood crime prevention, neighbors, Hispanic service organizations and other service providers joined together to create a network which could better respond to the public safety and other needs of the residents and surrounding community.

### **Combined Oregon Justice Imaging Network (COJIN)**

A computerized information storage and retrieval system was established to help access mug pictures, descriptive data, and arrest information on suspects booked into custody.

### **Vehicles towed for no proof of insurance**

At the request of the Police Bureau, the City Council adopted an ordinance authorizing police to tow cars if the driver could not show proof of insurance. The ordinance is designed to reduce the number of drivers who drive without liability insurance required by state law. In the first six months of implementation, about 700 vehicles a month were towed for driving without proof of insurance.

### **Incident Command System (ICS)**

The Bureau adopted the Incident Command System for handling major incidents such as presidential visits with accompanying protests. The system was used in 1993 for President Clinton's visit for the environmental hearing on forest resources. Many rallies over several days were held supporting different points of view.

### **Domestic Violence Reduction Unit**

The Family Services Division Domestic Violence Reduction Unit created its mission and selected a sergeant and five officers to begin work in helping domestic violence victims with processing complaints and restraining orders.

---

### **Empower the Community**

---

Create a more involved, responsible community by building stronger community partnerships, improving customer service, providing more open and responsive communications and delivering programs that promote involvement in problem solving and crime prevention.

### **Verdict in Los Angeles police - Rodney King federal case**

Community and Bureau members alike prepared for the announcement of the verdict in the Los Angeles police - Rodney King federal case. Because of the community policing efforts to set up a Rumor Control hotline, to be present at community gatherings and to keep in touch with community leaders by pagers, many potential problems were avoided.

### **Citizens Police Academy**

The Portland Police Citizens Police Academy held its first class in September 1993. By informing community members about the duties and mission of a Portland Police officer, the public is gaining an understanding of Bureau policies and procedures.

### **Inside Line**

The Police Bureau, Neighborhood Crime Prevention, the Oregon Crime Prevention Resource Center and the Citizens Crime Commission joined the state's largest newspaper, The Oregonian, in partnership to offer crime prevention information accessible by telephone. By calling the Inside Line telephone number, callers receive a two-minute taped segment on a variety of crime prevention topics.

### **Start Making A Reader Today (SMART)**

Beginning in September 1993, the Bureau joined other businesses and agencies across the state in the Start Making A Reader Today (SMART) literacy program aimed at putting adult tutors with K-3rd graders to help them to read better and to provide them with another adult role model.

### **Drug Abuse Resistance Education (DARE)**

The Bureau adopted the DARE program and officers were recruited and trained to teach drug abuse prevention techniques at the middle school grades.

### **Gang Resistance Education And Training (GREAT)**

Several officers were selected to be trained as GREAT instructors to help children build self-esteem and learn skills to avoid gang involvement.

---

### **Develop and Empower Personnel**

---

Implement training, management and organizational approaches that are consistent with the mission and values of community policing. Strengthen staff skill level and morale. Make sure recruiting, hiring, training and promotional practices are consistent with community characteristics and needs. Ensure work environments are supportive of customer service, innovation, personal accountability and team contribution.

### **Information and Referral PPDS database**

An information and referral database, complete with detailed information for the Bureau's most frequently used referrals, was entered into the Portland Police Data System terminals available to all personnel. This program is designed to give Bureau members instant access to up to date community resource information.

### **New Chief appointed**

Deputy Chief Charles Moose was appointed the new police Chief after a national search and selection process. As an advocate and practitioner of community policing, he made it clear that, "Community policing is what we do and will be the cornerstone of all decisions."

### **Employee Survey**

A job satisfaction survey of all employees was conducted in September, with results and analysis announced in November. The survey asked employees to assess their satisfaction with the job, autonomy, supervisor support, teamwork, recognition, fairness and problem solving support. The survey will be conducted annually as part of the Bureau's evaluation of community policing.

---

### **Strengthen Planning, Evaluation and Fiscal Support**

---

Strengthen planning, evaluation, analysis and fiscal mechanisms to ensure responsive feedback, practical long-range planning and effective budgeting and fiscal management.

### **New precinct facilities planned**

#### **Five precinct plan**

In late 1993, the Bureau proposed to the City Council a plan to expand the number of precincts to serve Portland's population, including newly annexed areas, from three to five. The five precinct plan would retain Central, decrease the size of North Precinct, create a Northeast Precinct and divide East Precinct into two precincts, East and Southeast.

#### **Construction begins for Northeast**

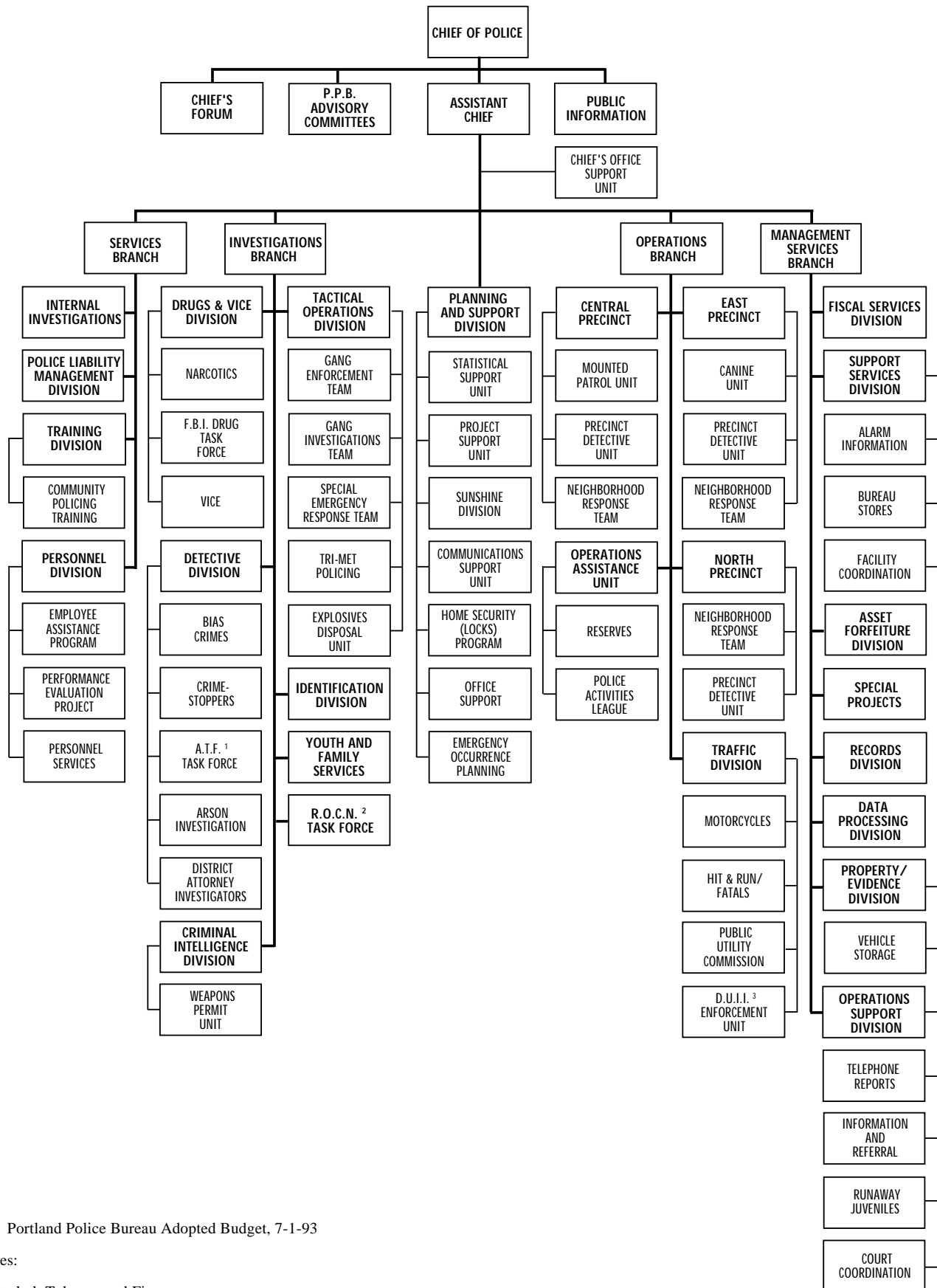
Northeast Precinct, in the Walnut Park Community Policing and Commercial Facility, began in 1993 with the opening scheduled for June 1994. The precinct facility will feature artwork created by area schoolchildren and a large meeting room for community gatherings.

#### **East Precinct relocates**

When preparing to remodel East Precinct, an inspection showed that the building did not meet current earthquake codes. The Bureau then began planning to move the precinct to temporary headquarters on Northeast Marine Drive.

### **Strategic Plan**

The Police Bureau Strategic Plan for 1994-96 was drafted and began its community and internal review in 1993, for adoption in spring of 1994. It will be used to guide individual work units budgets and work plans for the next two years.



Source: Portland Police Bureau Adopted Budget, 7-1-93

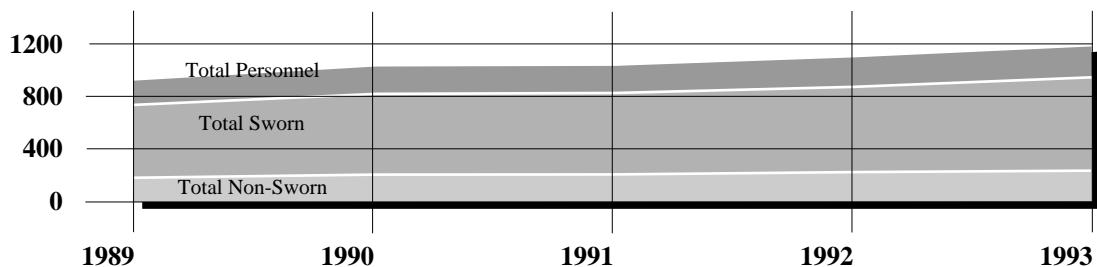
Footnotes:

1. Alcohol, Tobacco and Firearms
2. Regional Organized Crime and Narcotics Task Force
3. Driving Under the Influence of Intoxicants

	Chief, Asst. Chief & Deputy Chiefs	Commanders	Captains	Lieutenants	Sergeants	Detectives	Criminalist	Officers	Total Sworn	Total Non-Sworn	Total
<b>Chief's Office</b>	2	0	0	1	1	0	0	0	4	5	9
<b>Operations Branch</b>											
Operations Branch Command	1	0	0	1	0	0	0	0	2	0	2
Traffic Division <sup>1</sup>	0	0	1	1	5	0	0	35	42	3	45
Central Precinct <sup>2</sup>	0	1	0	3	17	6	0	144	171	5	176
East Precinct <sup>3</sup>	0	1	0	3	25	6	0	231	266	5	271
North Precinct <sup>4</sup>	0	1	0	4	16	6	0	146	173	8	181
Fourth Precinct <sup>5</sup>	0	0	0	2	3	4	0	0	9	1	10
Operations Assistance <sup>6</sup>	0	0	0	0	0	0	0	2	2	0	2
<b>Investigations Branch</b>											
Investigations Branch Command	1	0	0	0	0	0	0	0	1	0	1
Criminal Intelligence Division <sup>7</sup>	0	0	0	1	1	0	0	6	8	2	10
Detective Division <sup>8</sup>	0	0	1	4	12	79	0	4	100	17	117
Drugs & Vice Division	0	0	1	2	5	3	0	21	32	8	40
Regional Narcotics Task Force	0	0	0	1	2	2	0	0	3	0	3
Identification Division	0	0	0	1	2	0	14	0	17	21	38
Tactical Operations Division <sup>9</sup>	0	0	1	2	7	5	0	45	60	4	64
Youth and Family Services	0	0	1	1	1	0	0	6	9	2	11
<b>Services Branch</b>											
Services Branch Command	1	0	0	0	0	0	0	0	1	0	1
Police Liability Management	0	0	0	0	0	0	0	0	0	3	3
Personnel Division <sup>10</sup>	0	0	1	1	2	0	0	2	6	6	12
Training Division	0	0	1	1	3	0	0	7	12	5	17
Internal Investigations	0	0	0	1	0	4	0	0	5	2	7
<b>Planning and Support Division</b>											
Planning and Support Division Command	0	0	0	1	0	0	0	0	1	0	1
Office Support	0	0	0	0	0	0	0	0	0	3	3
Project Support Unit <sup>11</sup>	0	0	0	0	1	0	0	3	4	5	9
Communications Support Unit	0	0	0	0	0	0	0	0	0	2	2
Statistical Support Unit	0	0	0	0	0	0	0	1	1	3	4
Sunshine Division	0	0	0	0	1	0	0	1	2	0	2
Emergency Occurrence Planning	0	0	0	0	1	0	0	0	1	0	1
<b>Management Services Branch</b>											
Management Services Branch Command	0	0	0	0	0	0	0	0	0	1	1
Fiscal Services Division	0	0	0	0	0	0	0	0	0	9	9
Operations Support Division <sup>12</sup>	0	0	0	1	2	0	0	12	15	11	26
Records Division	0	0	0	0	0	0	0	0	0	77	77
Property Evidence Division	0	0	0	0	0	0	0	0	0	12	12
Data Processing Division	0	0	0	0	0	0	0	0	0	10	10
Support Services Division	0	0	0	0	0	1	0	1	2	4	6
Asset Forfeiture Division	0	0	0	0	1	0	0	1	2	2	4
Special Projects	0	0	1	0	0	0	0	1	2	0	2
<b>Totals</b>	<b>5</b>	<b>3</b>	<b>8</b>	<b>31</b>	<b>107</b>	<b>116</b>	<b>14</b>	<b>669</b>	<b>953</b>	<b>236</b>	<b>1,189</b>

**Personnel Distribution by Year**

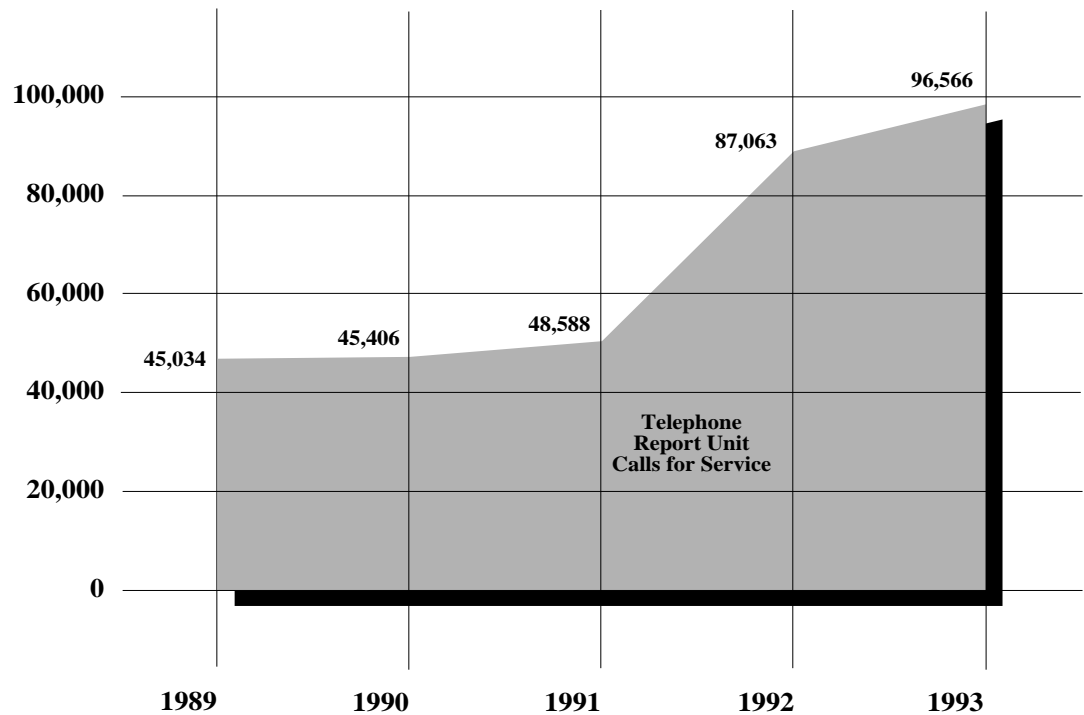
Total Personnel 927	Total Personnel 1,032	Total Personnel 1,037	Total Personnel 1,102	Total Personnel 1,189
Total Sworn 742	Total Sworn 823	Total Sworn 830	Total Sworn 877	Total Sworn 953
Total Non-Sworn 185	Total Non-Sworn 209	Total Non-Sworn 207	Total Non-Sworn 225	Total Non-Sworn 236



Footnotes: See page 15, Personnel Distribution.

	1989	1990	1991	1992	1993
<b>Dispatched Calls<sup>1</sup></b>	<b>260,279</b>	<b>233,373</b>	<b>234,689</b>	<b>234,491<sup>5</sup></b>	<b>230,518</b>
Rate of Dispatched Calls Per 1,000 Citizens	602	534	518	512	489
Officers Per 1,000 Citizens	1.72	1.89	1.83	1.91	2.02
Citizens Residing in Bureau's Service Area <sup>2</sup>	432,175	437,319	453,065	458,275	471,325
Telephone Report Unit Calls for Service <sup>3</sup>	45,034	45,406	48,588	87,063	96,566
Information and Referral Calls				13,262 <sup>4</sup>	79,447

**Telephone Report Unit Calls for Service by Year**

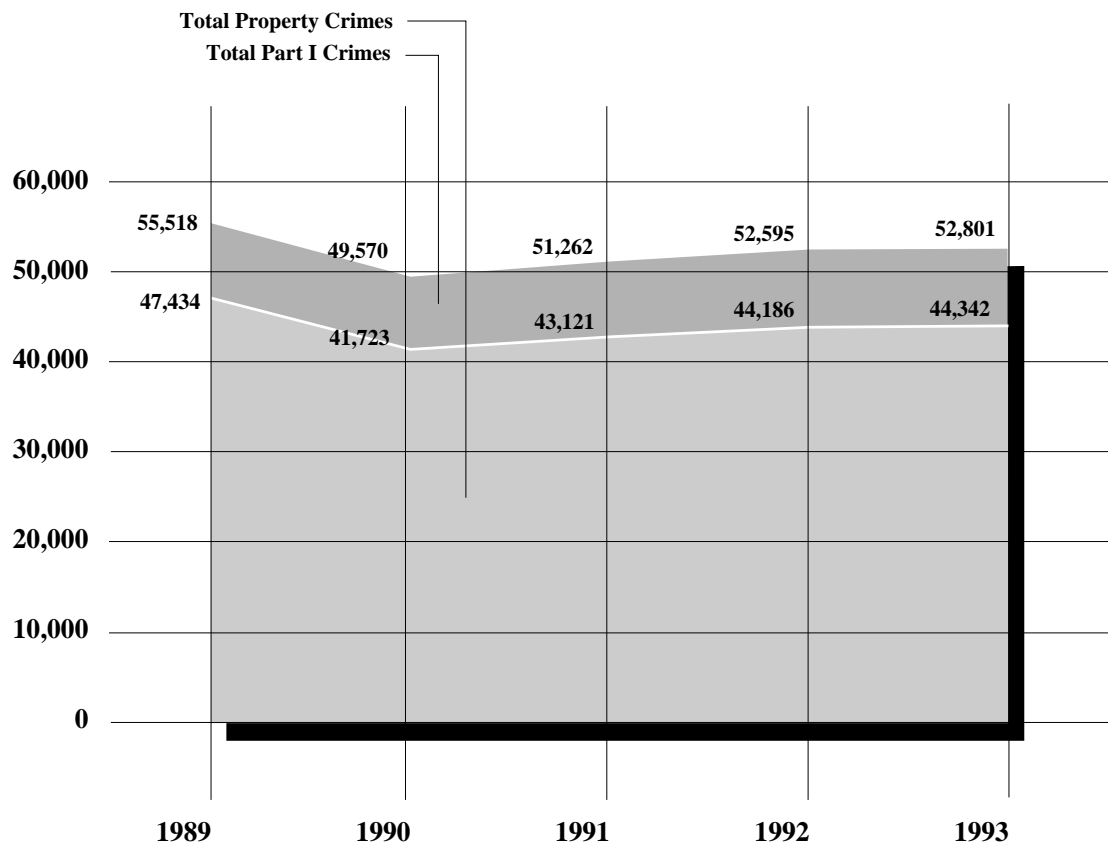


Footnotes:

1. Data on "Dispatched Calls" are from BOEC (Bureau of Emergency Communication) Computer Aided Dispatch (CAD) System incident tapes and include all calls to 9-1-1, as well as calls/contacts which are initiated by the officer. Non-emergency and telephone report unit calls are not included.
2. Population numbers are for July 1 of the given year and are from Portland State University, Center for Population Research & Census. Since 1980 approximately 85 to 90% of Portland's population adjustments have been due to annexations to the City of Portland. 1990 population is from the 1990 U.S. Census Count.
3. TRU calls are Calls for Service which are diverted from 9-1-1 to the Telephone Report Unit.
4. Service began in late September 1992. Data are reported for September-December only.
5. Total number is an estimate. There were no data from BOEC for April 1-14 and June 26-30.

	1989	1990	1991	1992	1993	Percent Change 1992-93
<b>Crimes Against Persons</b>						
Murder <sup>2</sup>	38	29	50	46	54	17%
Rape	415	424	464	490	479	-2%
Robbery	2,699	2,556	2,746	2,706	2,323	-14%
Aggravated Assault	4,932	4,838	4,881	5,167	5,603	8%
<b>Total Person Crimes</b>	<b>8,084</b>	<b>7,847</b>	<b>8,141</b>	<b>8,409</b>	<b>8,459</b>	<b>1%</b>
Rate of Person Crimes per 1,000 population						
	19	18	18	18	18	
<b>Crimes Against Property</b>						
Burglary	12,476	9,027	9,569	8,806	7,895	-10%
Larceny	27,209	26,192	26,493	26,754	27,180	2%
Motor Vehicle Theft	7,190	5,948	6,593	8,087	8,663	7%
Arson	559	556	466	539	604	12%
<b>Total Property Crimes</b>	<b>47,434</b>	<b>41,723</b>	<b>43,121</b>	<b>44,186</b>	<b>44,342</b>	<b>0.4%</b>
Rate of Property Crimes per 1,000 population						
	110	95	95	96	94	
<b>Total Part I-Crimes</b>	<b>55,518</b>	<b>49,570</b>	<b>51,262</b>	<b>52,595</b>	<b>52,801</b>	<b>0.4%</b>
Citizens Residing in Bureau's Service Area <sup>3</sup>						
	432,175	437,319	453,065	458,275	471,325	1%

**Total Part I Crimes and Property Crimes**

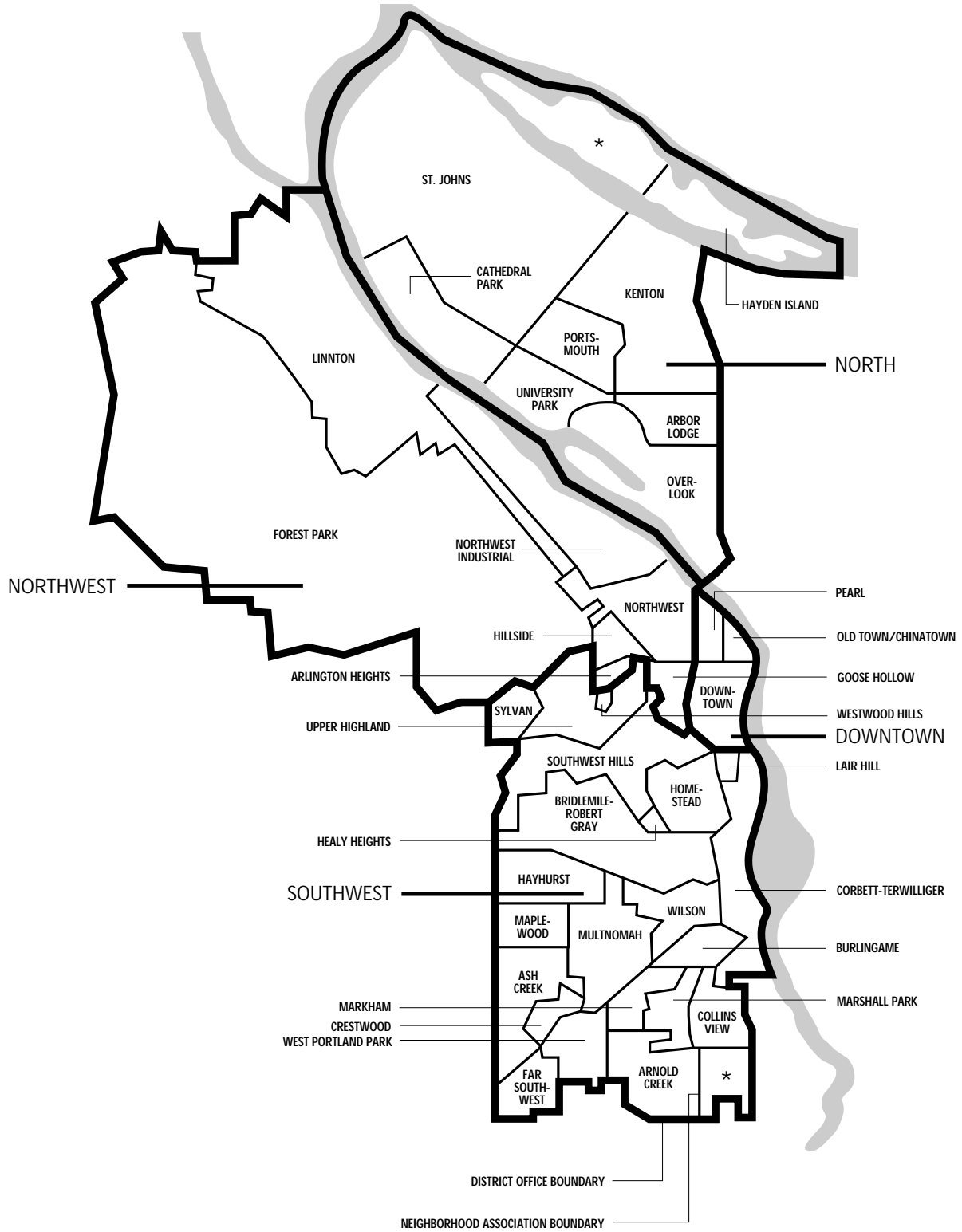


For definitions of crimes see: Appendix A

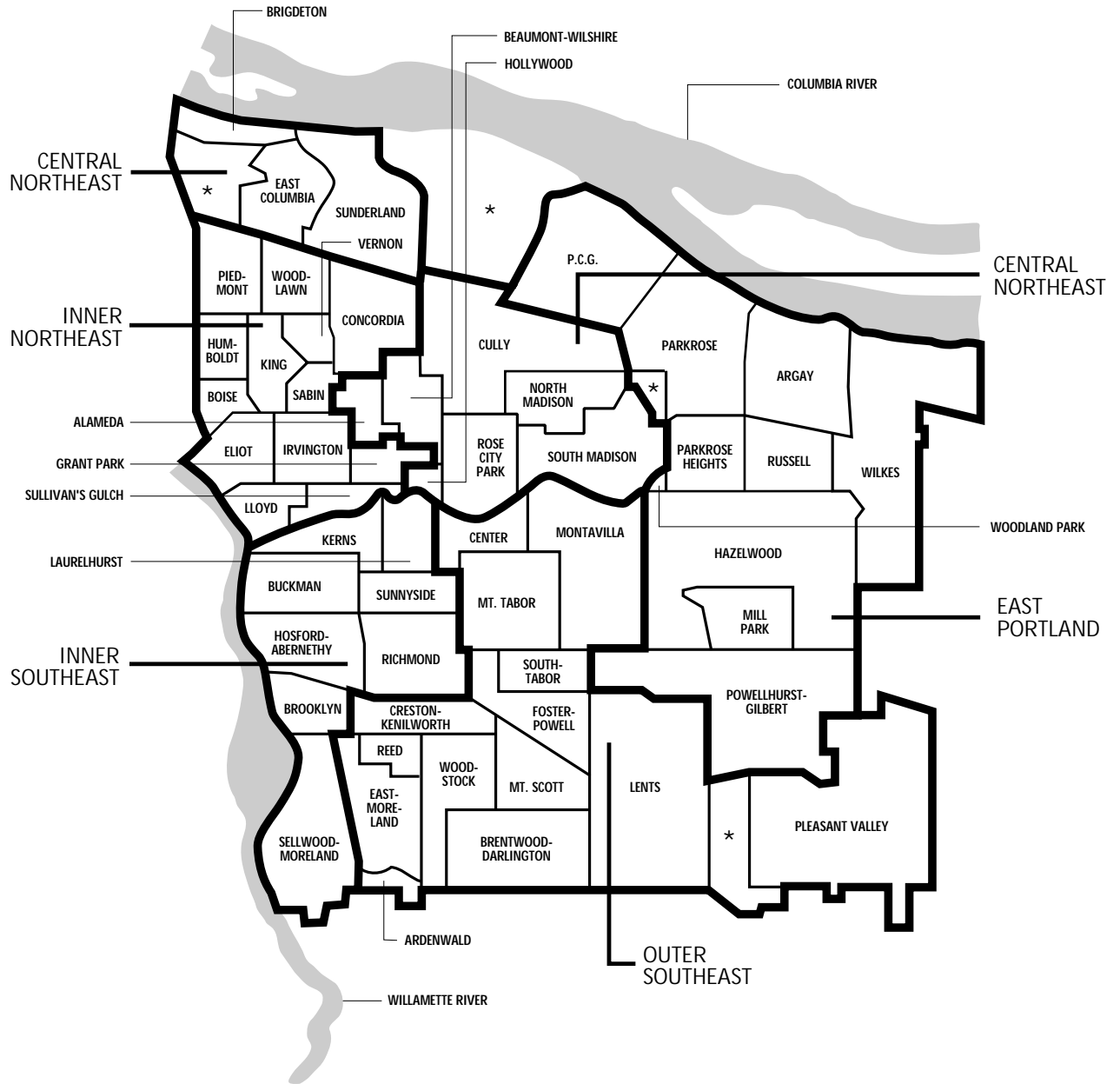
Footnotes:

1. Part I Crime data are from Oregon Law Enforcement Data Systems (LEDS). Included here are actual offenses known to the police, and does not include reported offenses which upon investigation may be unfounded, false or baseless.
2. Murder includes willful criminal homicide, but not manslaughter by negligence.
3. Population numbers for 1989, 1991, 1992 and 1993 are from Portland State University, Center for Population Research & Census. 1990 population is from the U.S. Census Count.





\* Not an official Neighborhood Association

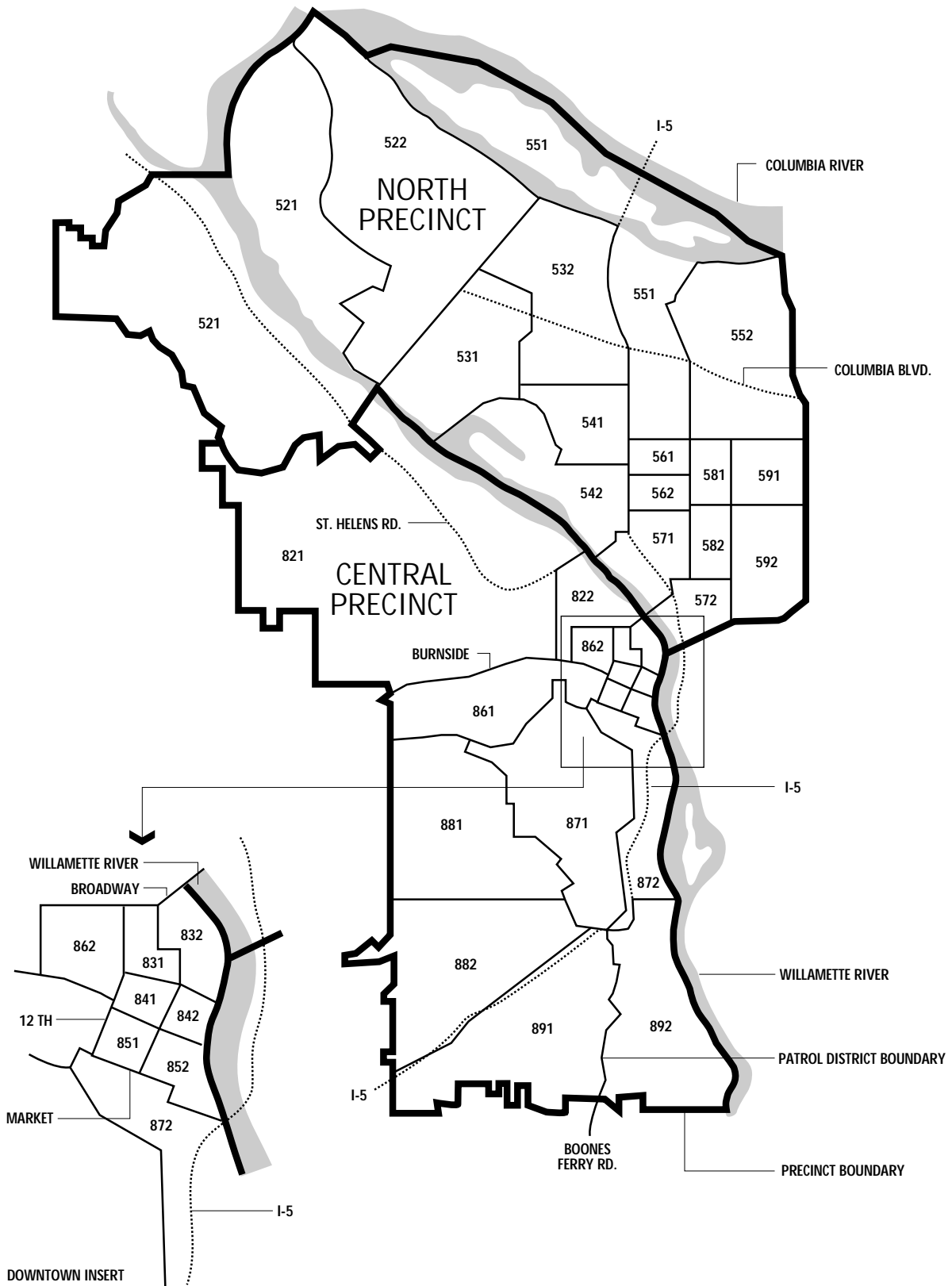


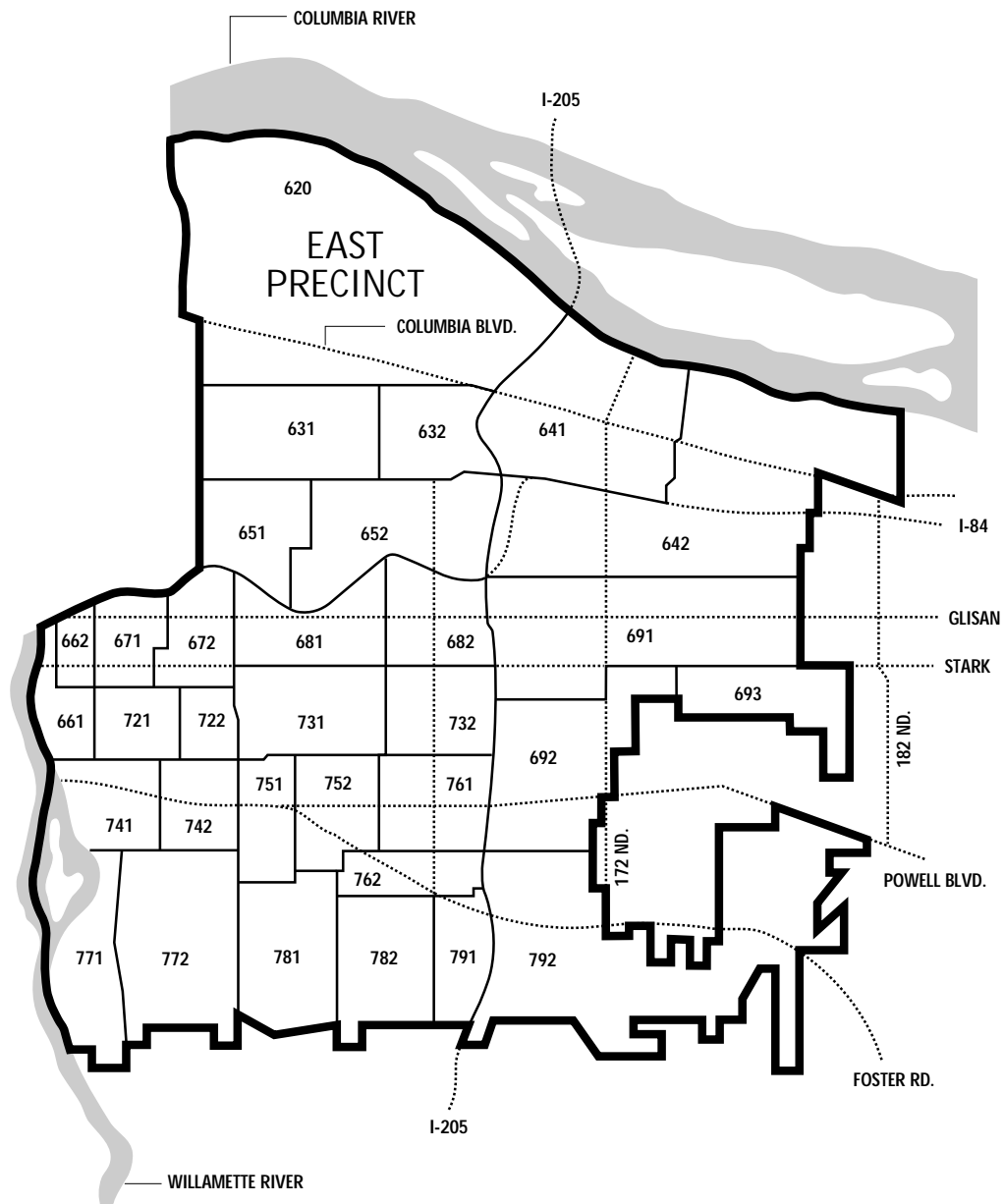
\* Not an official Neighborhood Association

	Murder	Rape	Robbery	Aggravated Assault	Burglary	Larceny	Motor Vehicle Theft	Arson	Total Part I	Total Part II	Total Part III	Grand Total	Rate/1000 Population <sup>1</sup>
<b>North</b>													
Arbor Lodge	0	9	24	58	116	209	97	15	528	387	545	1,460	239.2
Cathedral Park	1	2	16	33	50	110	29	1	242	201	298	741	248.6
Hayden Island	1	2	19	18	27	593	101	0	761	341	235	1,337	1,167.7
Kenton	0	7	51	158	145	557	155	14	1,087	759	1,061	2,907	451.7
Overlook	1	9	43	90	209	355	105	11	823	559	767	2,149	347.4
Portsmouth	0	8	26	131	125	218	117	19	644	642	746	2,032	260.3
St. Johns	2	14	57	219	182	505	148	17	1,144	1,085	1,265	3,494	356.4
University Park	0	0	9	28	59	223	74	2	395	223	197	815	164.2
<b>Total North</b>	<b>5</b>	<b>51</b>	<b>245</b>	<b>735</b>	<b>913</b>	<b>2,770</b>	<b>826</b>	<b>79</b>	<b>5,624</b>	<b>4,197</b>	<b>5,114</b>	<b>14,935</b>	<b>328.8</b>
<b>Inner Northeast</b>													
Boise	1	7	51	138	83	146	67	8	501	769	1,077	2,347	920.8
Concordia	0	9	65	157	252	350	220	11	1,064	793	949	2,806	280.9
Eliot	2	8	30	116	93	326	97	13	685	551	785	2,021	777.3
Grant Park	0	1	6	20	47	156	53	10	293	165	175	633	160.7
Humboldt	5	13	61	201	125	225	83	10	723	880	1,290	2,893	654.5
Irvington	0	5	40	46	95	202	164	3	555	294	389	1,238	187.9
King	1	15	130	271	179	300	114	15	1,025	1,597	2,093	4,715	899.5
Lloyd	0	3	106	64	44	1,328	301	8	1,854	988	813	3,655	6,174.0
Piedmont	0	8	51	132	154	228	112	15	700	625	787	2,112	329.6
Sabin	1	5	22	75	83	113	55	5	359	331	492	1,182	266.5
Sullivans Gulch	0	1	38	19	50	315	145	7	575	218	200	993	378.6
Vernon	3	8	42	129	100	86	64	5	437	525	898	1,860	702.7
Woodlawn	2	12	36	164	161	125	101	12	613	642	898	2,153	453.5
<b>Total Inner N.E.</b>	<b>15</b>	<b>95</b>	<b>678</b>	<b>1,532</b>	<b>1,466</b>	<b>3,900</b>	<b>1,576</b>	<b>122</b>	<b>9,384</b>	<b>8,378</b>	<b>10,846</b>	<b>28,608</b>	<b>503.8</b>
<b>Central Northeast</b>													
Alameda	0	0	7	7	50	138	86	2	290	103	128	521	93.2
Beaumont-Wilshire	1	0	8	13	42	138	57	3	262	172	158	592	116.4
Bridgeton	1	0	1	8	3	32	14	0	59	14	14	87	488.8
Columbia (East)	0	0	3	3	2	1	4	0	13	13	13	39	82.3
Cully	2	7	65	201	255	489	168	11	1,198	1,356	1,774	4,328	384.0
Hollywood	0	3	22	16	54	160	60	0	315	228	338	881	779.6
Rose City Park	0	7	39	43	80	267	142	4	582	300	380	1,262	136.9
Roseway	0	4	31	42	112	274	94	5	562	357	416	1,335	213.6
South Madison	1	9	18	80	131	241	131	10	621	579	673	1,873	317.3
Sunderland	2	5	3	17	72	99	44	2	244	115	200	559	3,307.7
<b>Total Central N.E.</b>	<b>7</b>	<b>35</b>	<b>197</b>	<b>430</b>	<b>801</b>	<b>1,839</b>	<b>800</b>	<b>37</b>	<b>4,146</b>	<b>3,237</b>	<b>4,094</b>	<b>11,477</b>	<b>253.5</b>
<b>East Portland</b>													
Argay	1	1	21	40	76	347	76	2	564	273	294	1,131	215.8
Hazelwood	4	15	73	127	202	1,227	394	13	2,055	1,158	1,342	4,555	392.2
Mill Park	0	5	14	60	53	139	53	4	328	277	387	992	174.4
Parkrose	1	8	19	71	102	194	109	10	514	417	614	1,545	315.1
Parkrose Heights	0	1	16	17	47	120	73	3	277	212	209	698	126.9
PCG	0	1	1	11	21	113	23	0	170	42	57	269	1,817.6
Powellhurst-Gilbert	0	12	20	63	93	292	141	8	629	494	855	1,978	307.7
Russell	0	0	3	20	29	103	24	1	180	174	169	523	119.7
Wilkes	1	2	9	37	79	196	50	7	381	220	282	883	106.7
Woodland Park	0	0	0	2	1	9	1	0	13	14	24	51	278.7
<b>Total East Portland</b>	<b>7</b>	<b>45</b>	<b>176</b>	<b>448</b>	<b>703</b>	<b>2,740</b>	<b>944</b>	<b>48</b>	<b>5,111</b>	<b>3,281</b>	<b>4,233</b>	<b>12,625</b>	<b>241.2</b>
<b>Inner Southeast</b>													
Brooklyn	0	4	20	50	79	163	80	3	399	243	290	932	253.3
Buckman	1	9	69	87	188	824	271	23	1,472	1,091	1,271	3,834	483.6
Hosford-Abernethy	0	4	26	68	144	425	159	23	849	608	595	2,052	290.2
Kerns	1	7	52	78	114	417	153	9	831	767	932	2,530	525.9
Laurelhurst	0	4	5	12	37	132	79	2	271	182	290	743	155.2
Richmond	0	1	29	60	131	515	172	17	925	547	674	2,146	183.4
Sellwood-Moreland	0	5	36	77	163	484	127	12	904	526	615	2,045	186.5
Sunnyside	0	5	27	62	119	481	149	10	853	478	475	1,806	250.8
<b>Total Inner Southeast</b>	<b>2</b>	<b>39</b>	<b>264</b>	<b>494</b>	<b>975</b>	<b>3,441</b>	<b>1,190</b>	<b>99</b>	<b>6,504</b>	<b>4,442</b>	<b>5,142</b>	<b>16,088</b>	<b>276.7</b>

	Murder	Rape	Robbery	Aggravated Assault	Burglary	Larceny	Motor Vehicle Theft	Arson	Total Part I	Total Part II	Total Part III	Grand Total	Rate/1000 Population <sup>1</sup>
<b>Outer Southeast</b>													
Ardenwald	0	0	0	2	8	8	4	1	23	22	31	76	175.1
Brentwood-Darlington Center	0	8	15	125	196	248	140	7	739	663	865	2,267	216.4
Creston-Kenilworth	0	2	7	31	57	186	101	4	388	297	409	1,094	243.4
Eastmoreland	0	8	39	84	129	279	135	9	683	536	611	1,830	234.9
Foster-Powell	0	0	0	18	39	197	34	3	291	58	87	436	85.8
Lents	0	5	23	58	110	252	167	8	623	378	597	1,598	237.5
Montavilla	0	17	49	206	247	649	395	32	1,595	1,265	1,662	4,522	296.1
Mt. Scott	3	10	52	128	283	614	287	15	1,392	1,035	1,250	3,677	244.7
Mt. Tabor	2	4	22	73	106	230	147	6	590	430	555	1,575	224.3
Pleasant Valley	0	6	13	25	79	286	121	9	539	314	312	1,165	116.6
Reed	0	0	0	6	21	19	9	2	57	37	70	164	41.0
South Tabor	0	1	4	11	53	135	100	0	304	87	104	495	159.5
Woodstock	2	4	25	44	87	357	119	8	646	358	401	1,405	223.1
<b>Total Outer Southeast</b>	<b>7</b>	<b>71</b>	<b>266</b>	<b>852</b>	<b>1,525</b>	<b>3,716</b>	<b>1,872</b>	<b>111</b>	<b>8,420</b>	<b>5,817</b>	<b>7,392</b>	<b>21,629</b>	<b>207.4</b>
<b>Southwest</b>													
Arnold Creek	0	0	0	3	15	22	2	1	43	23	23	89	51.8
Ash Creek	0	1	0	10	26	41	7	0	85	69	75	229	45.2
Bridlemile-Robert Gray	0	0	7	12	58	151	37	4	269	154	154	577	66.0
Burlingame	0	0	1	3	11	21	6	1	43	25	36	104	61.5
Collins View	0	0	0	1	14	44	3	2	64	22	30	116	76.1
Corbett-Terwillger	0	1	10	28	102	399	94	8	642	258	293	1,193	305.3
Crestwood	0	0	0	2	8	20	2	2	34	9	18	61	64.6
Far Southwest	0	0	0	0	10	9	1	0	20	10	13	43	32.0
Hayhurst	0	1	2	11	51	69	12	3	149	85	75	309	59.0
Healy Heights	0	0	0	0	0	2	0	0	2	0	0	2	21.3
Homestead	0	0	0	3	30	304	18	2	357	58	124	539	173.1
Lair Hill	1	0	0	2	12	41	8	0	64	18	33	115	326.7
Maplewood	0	0	0	3	12	26	8	0	49	27	33	109	44.9
Markham	1	0	0	4	33	34	8	1	81	43	35	159	71.0
Marshall Park	0	0	0	0	3	9	1	1	14	24	12	50	34.9
Multnomah	0	3	4	39	101	216	52	1	416	253	376	1,045	156.6
Southwest Hills	0	1	3	7	49	157	46	0	263	68	99	430	98.9
Sylvan	0	0	0	2	6	23	2	0	33	7	4	44	63.9
Upper Highland	0	4	3	4	21	61	8	3	104	49	80	233	213.8
West Portland Park	0	2	3	6	38	103	15	3	170	71	109	350	113.3
Westwood Hills	0	0	0	0	4	2	0	0	6	0	0	6	22.2
Wilson	0	3	6	12	47	140	41	4	253	206	152	611	154.7
<b>Total Southwest</b>	<b>2</b>	<b>16</b>	<b>39</b>	<b>152</b>	<b>651</b>	<b>1,894</b>	<b>371</b>	<b>36</b>	<b>3,161</b>	<b>1,479</b>	<b>1,774</b>	<b>6,414</b>	<b>107.0</b>
<b>Northwest</b>													
Arlington Heights	0	0	0	0	6	12	2	0	20	6	7	33	55.9
Forest Park	0	0	2	1	5	45	7	1	61	27	30	118	65.9
Goose Hollow	1	3	14	54	82	401	104	6	665	330	419	1,414	288.2
Hillside	0	1	2	2	15	29	10	2	61	14	14	89	71.4
Linnton	0	0	5	12	22	78	8	2	127	47	100	274	330.5
Northwest	4	11	61	104	232	1,157	316	7	1,892	1,064	905	3,861	329.9
Northwest Industrial	0	0	5	9	45	74	32	3	168	54	136	358	6,509.1
Pearl	0	3	26	46	34	404	57	3	573	650	736	1,959	3,114.5
<b>Total Northwest</b>	<b>5</b>	<b>18</b>	<b>115</b>	<b>228</b>	<b>441</b>	<b>2,200</b>	<b>536</b>	<b>24</b>	<b>3,567</b>	<b>2,192</b>	<b>2,347</b>	<b>8,106</b>	<b>372.7</b>
<b>Downtown</b>													
Old Town/Chinatown	1	4	80	80	15	247	38	6	471	2,326	2,146	4,943	4,421.3
Downtown	1	19	219	305	220	3,161	313	20	4,258	3,832	4,800	12,890	1,552.1
<b>Total Downtown</b>	<b>2</b>	<b>23</b>	<b>299</b>	<b>385</b>	<b>235</b>	<b>3,408</b>	<b>351</b>	<b>26</b>	<b>4,729</b>	<b>6,158</b>	<b>6,946</b>	<b>17,833</b>	<b>1,892.5</b>
<b>Unknown/ No Neighborhood</b>													
	2	75	39	326	164	1,234	216	16	2,072	1,297	3,934	7,303	

For definitions of crimes see: Appendix A  
Footnotes: See page 15, Offenses per Neighborhood.





	Murder	Rape	Robbery	Aggravated Assault	Burglary	Larceny	Motor Vehicle Theft	Arson	Total Part I	Total Part II	Total Part III	Grand Total
<b>North Precinct</b>												
521	0	6	41	96	115	297	77	6	638	602	789	2,029
522	3	9	37	167	130	381	105	12	844	734	870	2,448
531	0	8	35	157	185	438	191	21	1,035	859	948	2,842
532	0	8	33	144	133	373	137	15	843	612	937	2,392
541	0	13	49	100	188	471	137	21	979	695	908	2,582
542	1	5	36	61	152	275	82	5	617	399	521	1,537
551	2	12	79	167	209	1,041	265	20	1,795	1,087	1,171	4,053
552	2	19	64	241	328	294	216	17	1,181	988	1,359	3,528
561	6	15	64	174	119	221	83	9	2,691	935	1,154	2,780
562	0	5	26	116	55	106	46	3	357	526	738	1,621
571	2	8	62	194	127	355	112	17	877	964	1,393	3,234
572	0	4	142	101	96	1,455	376	13	2,187	1,184	1,063	4,434
581	1	11	113	230	178	237	100	10	880	1,107	1,727	3,714
582	1	12	24	92	87	145	84	7	452	596	794	1,842
591	3	14	62	201	198	253	150	11	892	897	1,251	3,040
592	0	2	61	107	159	613	338	14	1,294	578	833	2,705
<b>North Totals</b>	<b>21</b>	<b>151</b>	<b>928</b>	<b>2,348</b>	<b>2,459</b>	<b>6,955</b>	<b>2,499</b>	<b>201</b>	<b>15,562</b>	<b>12,763</b>	<b>16,456</b>	<b>44,781</b>
<b>East Precinct</b>												
620	3	9	25	124	157	386	126	7	837	589	880	2,306
631	2	3	65	121	173	474	167	10	1,015	979	1,067	3,061
632	0	4	18	53	121	206	92	5	499	411	669	1,579
641	2	9	31	103	158	486	170	11	970	664	854	2,488
642	1	2	39	75	178	535	161	9	1,000	651	742	2,393
651	0	8	44	60	151	463	192	9	927	623	762	2,312
652	1	12	58	110	196	494	213	15	1,099	830	926	2,855
661	0	4	14	20	53	249	62	5	407	276	356	1,039
662	0	7	35	47	46	321	82	9	547	631	784	1,962
671	1	4	47	66	112	419	152	12	813	568	686	2,067
672	1	9	28	61	110	368	156	4	737	491	624	1,852
681	0	3	13	45	126	326	177	9	699	470	655	1,824
682	3	6	23	63	145	297	143	6	686	549	693	1,928
691	4	14	71	147	185	1,171	374	14	1,980	1,128	1,267	4,375
692	0	8	21	89	123	342	148	6	737	513	793	2,043
721	0	1	26	37	106	396	164	7	737	519	328	1,584
722	0	1	14	30	85	378	93	15	616	298	279	1,193
731	0	8	26	41	105	404	147	13	744	465	486	1,695
732	0	5	27	64	121	313	144	10	684	487	553	1,724
741	0	4	27	77	132	264	131	12	647	398	514	1,559
742	0	5	29	71	114	358	146	14	737	426	559	1,722
751	0	3	29	73	113	257	127	8	610	500	608	1,718
752	1	7	20	77	130	242	173	10	660	483	633	1,776
761	1	12	40	69	106	471	168	8	875	562	770	2,207
762	0	4	41	61	102	337	185	8	738	482	629	1,849
771	0	4	29	56	116	332	77	10	624	347	382	1,353
772	0	2	11	52	147	494	188	6	900	346	455	1,701
781	0	9	22	71	146	305	129	11	693	526	683	1,902
782	3	6	16	112	190	242	173	6	748	635	843	2,226
791	0	10	12	88	105	200	143	14	572	471	661	1,704
792	0	4	16	108	119	272	127	10	656	536	835	2,027
<b>East Totals</b>	<b>23</b>	<b>187</b>	<b>917</b>	<b>2,271</b>	<b>3,971</b>	<b>11,802</b>	<b>4,730</b>	<b>293</b>	<b>24,194</b>	<b>16,854</b>	<b>20,976</b>	<b>62,024</b>
<b>Central Precinct</b>												
821	1	4	13	23	137	379	132	7	696	376	342	1,414
822	1	3	21	39	107	462	116	4	753	353	347	1,453
831	1	2	22	38	19	220	30	3	335	612	657	1,604
832	0	9	106	117	31	377	51	7	698	2,942	3,054	6,694
841	0	7	83	80	48	958	73	4	1,253	1,366	1,681	4,300
842	0	1	19	39	32	428	35	4	558	426	447	1,431
851	1	0	33	45	39	459	53	4	634	498	425	1,557
852	0	1	17	44	16	404	40	3	525	430	874	1,829

	Murder	Rape	Robbery	Aggravated Assault	Burglary	Larceny	Motor Vehicle Theft	Arson	Total Part I	Total Part II	Total Part III	Grand Total
861	1	5	16	56	96	498	108	7	787	313	419	1,519
862	2	10	57	102	106	787	168	7	1,239	798	798	2,835
871	1	3	7	22	132	618	113	4	900	240	371	1,511
872	0	3	33	59	135	937	150	10	1,327	471	541	2,339
881	0	1	9	25	103	224	44	8	414	241	234	889
882	0	5	6	57	167	346	87	3	671	474	509	1,654
891	1	3	5	22	114	276	48	9	478	242	344	1,064
892	0	1	2	76	57	243	26	2	407	161	599	1,167
<b>Central Totals</b>	<b>9</b>	<b>58</b>	<b>449</b>	<b>844</b>	<b>1,339</b>	<b>7,616</b>	<b>1,274</b>	<b>86</b>	<b>11,675</b>	<b>9,943</b>	<b>11,642</b>	<b>33,260</b>
<b>Unknown</b>	<b>1</b>	<b>72</b>	<b>24</b>	<b>119</b>	<b>105</b>	<b>769</b>	<b>179</b>	<b>18</b>	<b>1,287</b>	<b>918</b>	<b>2,748</b>	<b>4,953</b>

Assaults On Officers

Type of Activity	By Type of Weapon					By Type of Assignment				
	Total Assaults With Weapon	Firearm	Knife	Other	Hands	Two Person Car	One Person Car/Alone	One Person Car/Assisted	Other Alone <sup>1</sup>	Other Assisted <sup>1</sup>
Responding to Disturbance Calls	39	1	0	3	35	12	9	12	0	6
Burglaries in Progress	3	0	0	3	0	3	0	0	0	0
Robberies in Progress	3	2	0	0	1	0	0	0	1	2
Attempting Other Arrests	44	9	0	4	31	11	4	26	1	2
Handling, Transporting Prisoners	21	0	0	1	20	10	1	8	0	2
Investigating Suspicious Circumstances	13	0	0	1	12	1	5	6	1	0
Mentally Disturbed	2	0	0	1	1	0	1	1	0	0
Traffic Pursuits	10	0	0	4	6	3	5	2	0	0
All Others	16	1	0	5	10	1	4	4	4	3
<b>Totals</b>	<b>151</b>	<b>13</b>	<b>0</b>	<b>22</b>	<b>116</b>	<b>41</b>	<b>29</b>	<b>59</b>	<b>7</b>	<b>15</b>

Source: Oregon Law Enforcement Data Systems (LEDS)

Footnotes:

1. Includes Detectives and Officers on Special Assignment

Offenses per Neighborhood from pages 10-11.

Footnotes:

1. Many factors can influence the Rate/1000 Population calculations, and can affect meaningful comparisons among neighborhoods.

Personnel Distribution from page 5.

Personnel Distribution Source: 7/1/93 Portland Police Bureau Adopted Budget (excludes any changes made after adoption of budget)

Footnotes:

1. Includes personnel assigned to Hit & Run/Fatals Investigations, Public Utility Commission Inspections Unit, DUII Enforcement Unit, and Motorcycle Officers working traffic.
2. Includes staff assigned to the Mounted Patrol Unit, Neighborhood Response Team, and Precinct Detective Unit.
3. Includes personnel assigned to the Canine Unit, Neighborhood Response Team, and Precinct Detective Unit.
4. Includes staff assigned to the Neighborhood Response Team, and Precinct Detective Unit.
5. Includes positions allocated for precinct scheduled to open in Fiscal Year 1993-94.
6. Includes Reserve Program and Police Activities League (PAL).
7. Includes Weapons Permit Unit.
8. Includes personnel assigned to the District Attorney's Office, Arson Investigation, Bias Crimes Unit, Alcohol, Tobacco and Firearms Task Force, and Crimestoppers.
9. Includes staff assigned to the Special Emergency Response Team and Explosives Disposal Unit, the Gang Enforcement and Gang Investigations Teams, and the Tri-Met Policing Unit.
10. Includes the Performance Evaluation Project, and the Chaplain/Employee Assistance Program.
11. Includes Home Security/Locks program.
12. Includes staff assigned to the Telephone Report Unit (TRU), Information and Referral, investigation of runaways, and coordination of court activities.



	Adults Arrested	Juveniles Arrested	Total Arrests in 1993
<b>Part I Crime Arrests</b>			
Willful Criminal Homicide	62	5	67
Rape	108	21	129
Robbery	378	139	517
Aggravated Assaults	425	189	614
Burglary	397	170	567
Larceny	4,065	1,510	5,575
Motor Vehicle Theft	667	455	1,122
Arson	24	58	82
<b>Total Part I Arrests</b>	<b>6,126</b>	<b>2,547</b>	<b>8,673</b>
<b>Part II Crime Arrests</b>			
Simple Assaults	3,822	536	4,358
Forgery	388	49	437
Fraud	148	13	161
Stolen Property	73	22	95
Vandalism	497	288	785
Weapon Laws	544	162	706
Prostitution	841	16	857
Sex Crimes	261	52	313
Drug Laws Total	4,189	233	4,422
Narcotics			
Heroin	651	24	675
Morphine	2	0	2
Cocaine	2,787	133	2,920
Codeine	6	0	6
Marijuana			
Hashish	46	0	46
Marijuana	451	67	518
Synthetic Drugs	18	2	20
Dangerous Drugs	228	7	235
Gambling	7	10	17
Family Offenses	26	0	26
Driving Under the Influence of Intoxicants	1,956	5	1,961
Liquor Laws	2,251	297	2,548
Disorderly Conduct	278	97	375
Kidnapping	5	1	6
Curfew	9	967	976
Runaway	2	611	613
All Others	1,759	310	2,069
<b>Total Part II Arrests</b>	<b>17,056</b>	<b>3,669</b>	<b>20,725</b>
<b>Part III Crime Arrests</b>			
Miscellaneous Traffic	2,368	87	2,455
Protective Custody	8	871	879
Other Custody	0	0	0
Warrants	26	0	26
Fugitives	3,349	565	3,914
<b>Total Part III Arrests</b>	<b>5,751</b>	<b>1,523</b>	<b>7,274</b>
<b>Grand Total</b>	<b>28,933</b>	<b>7,739</b>	<b>36,672</b>

## Appendix A

**Aggravated Assault:** An attack by one person upon another for the purpose of inflicting severe injury. This type of assault usually is accompanied by the use of a weapon or by means likely to produce death or injury.

**All Other Offenses:** Except Traffic - Includes trespass, blackmail, bomb threat, animal ordinances, and littering.

**Arrest:** The actual number of persons arrested (both booked and taken into custody; and cited and released) for committing criminal acts.

**Arson:** Any willful burning or attempt to burn a building, motor vehicle, aircraft, or personal property of another.

**Burglary:** The unlawful entry of a structure (both residential and non-residential) with intent to commit a theft.

**Crimes Against Persons:** Criminal offenses where the victim is present and the act is violent, threatening or has the potential of being physically harmful.

**Crimes Against Property:** Offenses that involve taking something of value by theft or deception or the destruction of property.

**Disorderly Conduct:** In this classification are placed all offenses of committing a breach of the peace.

**Drug Laws:** Included are all violations of state and local laws, specifically those related to the unlawful possession, sale, use, growing, manufacturing, and making of illegal drugs.

**Driving Under the Influence of Intoxicants (D.U.I.):** Driving or operating any vehicle while under the influence of liquor or drugs.

**Embezzlement:** Misappropriation of money or property entrusted to one's care.

**Extortion:** The use of fear of death, injury, property loss, reputation, etc. to induce or compel another to deliver property or perform some act or omission.

**Family Offenses:** Included here are offenses such as abandonment, neglect of children, custodial interference and non-support.

(Physical abuse would be reported as an assault).

**Forgery also Forgery/Counterfeiting:** Forgery and counterfeiting are treated as allied offenses. In this classification are placed all offenses dealing with the making, altering, or possessing, with intent to defraud, anything false in the semblance of that which is true.

**Fraud:** Fraudulent conversion and obtaining money or property by false pretenses.

**Fugitives:** This category covers arrests made for other agencies and may be for: Parole/Probation violation, AWOL (absence without leave) from a penal institution, etc.

**Gambling:** All offenses which relate to promoting, permitting, or engaging in gambling are included in this category.

**Homicide:** Includes willful murder and aggravated murder.

**Kidnapping:** The interference with another person's liberty without consent or legal authority.

**Larceny:** The unlawful taking of property from the possession of another; includes pickpocket, pursesnatch, shoplift, bike theft, and theft from motor vehicle (car prowling).

**Liquor Laws:** With the exception of Driving Under the Influence all liquor law violations, state or local, are placed in this classification.

**Miscellaneous Traffic Crimes:** Serious traffic offenses which are classified as a misdemeanor or felony as defined by the Oregon Motor Vehicle Code.

**Motor Vehicle Theft:** The theft or attempted theft of a motor vehicle; includes motorcycles.

**Murder:** The willful (non-negligent) killing of one human being by another.

**Negligent Homicide:** The killing of another person through gross negligence.

Offenses - Excludes motor vehicle traffic death.

Arrests - Includes persons arrested for motor vehicle traffic death.

**Offense:** The criminal act, the number of criminal acts.

**Part I Crimes:** A group of crimes which are reported and tracked nationally: murder, rape, robbery, aggravated assault, burglary, larceny, motor vehicle theft, and arson.

**Part II Crimes:** A group of crimes which are reported and tracked nationally: simple assault, forgery, fraud, stolen property, vandalism, weapon laws, prostitution, sex crimes, drug laws, gambling, family offenses, D.U.I., liquor laws, disorderly conduct, kidnapping, curfew, runaway, and other offenses (see All Other Offenses above).

**Part III Crimes:** A group of crimes which are reported and tracked within the State of Oregon: includes traffic, warrants, protective custody, fugitives, officer assaults, and property and vehicles recovered for other jurisdictions.

**Protective Custody:** The custody of persons for detoxification, mental holds, material witness, or protective custody. Examples: transport of an intoxicated subject to the local detoxification center; taking a child into protective custody pending further investigation of the child's care and welfare.

**Prostitution:** Included in this classification are the sex offenses of a commercialized nature.

**Pursesnatch:** To snatch a purse from the physical control of another. (If force is directed or used against the victim the matter becomes a robbery).

**Rape:** The carnal knowledge of a female, forcibly and against her will.

**Robbery:** The taking or attempting to take anything of value from a person or persons by force or threat of force.

**Runaway:** When a juvenile has departed from some location within Multnomah County and the juvenile's parents or guardians have reported them as a runaway.

**Sex Crimes:** Covers offenses such as statutory rape, contributing to the sexual delinquency of a minor, non-forcible rape, incest, molest, indecent exposure, forcible and non-forcible sodomy, obscene phone calls. (Does not include forcible rape, or prostitution).

**Simple Assault:** Assaults which are limited to the use of physical force and result in little or no injury to the victim.

**Stolen Property Offenses:** Included in this classification are all offenses of buying, receiving and possessing stolen property, as well as all attempts to commit any of these offenses.

**Vandalism:** Consists of the willful destruction, or defacement of property.

**Warrants:** Includes service of warrants of arrest and related papers for Multnomah County, as well as all other jurisdictions within the United States.

**Weapons Regulation Laws:** Deals with weapon offenses which are regulatory in nature, such as: furnishing a deadly weapon to a minor; excon or alien in possession of a firearm.

**Willful Murder and Non Negligent Manslaughter:** The willful (non-negligent) killing of one human being by another.

## Information and Referral\*

**Emergency Police-Fire-Medical** 9-1-1  
Non-emergency 230-2121

### Portland Police Bureau

Police Information 823-4636

Central Precinct 823-0097  
East Precinct 823-4800  
North Precinct 823-2122  
Northeast Precinct 823-5700  
Southeast Precinct 823-2143  
Traffic Division 823-2103

Alarm Information Officer 823-0031  
Chief's Office 823-0000  
Crimestoppers 823-4357

### Community Contact Offices

Between the Rivers Contact Office 823-4062  
Brentwood Darlington Safety Action Team 248-3916  
Columbia Cottage Contact Office 735-1537  
Cully Neighborhood Contact Office 823-4133  
Grand/Wentworth Office 823-2165  
Hillsdale Terrace Apartments 246-3966  
Hollywood Contact Office 288-4472  
Iris Court Contact Office 823-4070  
Jantzen Beach Office 289-0667  
Lloyd Center Office 280-9414  
Old Town Office 823-2160  
Roseway Contact Office 281-8327  
Sellwood Office 823-2133  
SW Community Contact Office 823-3141

Detective Division 823-0400  
Domestic Violence Reduction Unit 823-0961  
Drug and Vice 823-0246  
Drug House Complaint Hotline 823-3784  
Gang Enforcement Team 823-4106  
Internal Investigations 823-0236  
Museum 823-0019  
Personnel 823-0333  
Planning and Support Division 823-0283  
    Crime statistics 823-0298  
Property Room 823-2179  
Public Information Officer 823-0010  
Records  
    Auto Records 823-0044  
    Police reports 823-0041  
Reserve Coordinator 823-0179  
Sunshine Division 823-2102  
Training 823-0316

### Police Bureau Crime Prevention/Outreach Programs

Business Emergency Notification 823-0952  
Block Homes 823-0290  
Police Activities League PAL 823-0017  
Senior Locks 823-0283  
Telephone Reassurance/Elderly Programs 823-0291  
WomenStrength/Sexual Assault Prevention 823-0296

### Neighborhood Crime Prevention

Office of Neighborhood Associations 823-4519  
Crime Prevention Coordinator 823-3048  
Association for Portland Progress 224-8684  
Central Northeast Neighbors 823-3156  
East Portland District Coalition 256-0014  
Neighbors West/Northwest 223-3331  
North Portland Neighborhood Office 823-4524  
Northeast Coalition of Neighborhoods 823-4575  
Southeast Uplift 232-0010  
Southwest Neighborhood Information Inc. 823-4592

### Other City/Community Contacts

Animal Control 248-3066  
Bureau of Buildings  
    Abandoned Vehicle Hotline 823-7309  
    Neighborhood Nuisance 823-7306  
Child Abuse Hotline 731-3100  
City of Portland Noise Control Office 823-7350  
Harry's Mother Teen Crisis Line 233-8111  
Metro Crisis Intervention Service 223-6161  
Neighborhood Mediation 823-3152  
Parent's Anonymous Parent Helpline 238-8818  
Portland School Police 331-3307  
Portland Women's Crisis Line 235-5333  
Senior Helpline 248-3646  
United Way Information and Referral 222-5555  
US West Telabuse  
    Telephone Harassment Line 1-800-541-3386  
Youth Gang Hotline 823-4264

\* Information current as of June 1994.



Vera Katz, Mayor  
Charles A. Moose, Chief of Police

This report was produced by the  
Portland Police Bureau  
Planning and Support Division

Portland Police Bureau  
1111 S.W. 2nd Avenue  
Portland, Oregon 97204  
(503) 823-0283