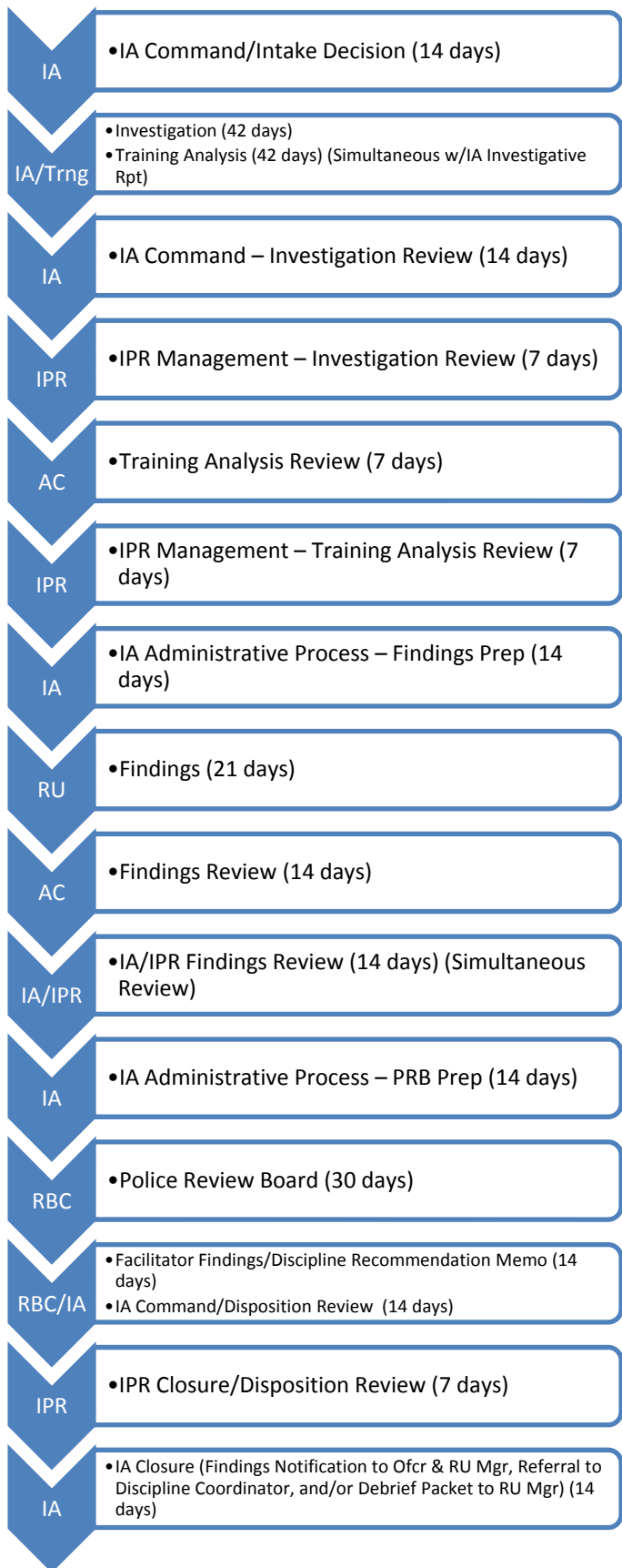


OIS/ICD Case w/PRB. Current timelines – 233 Days



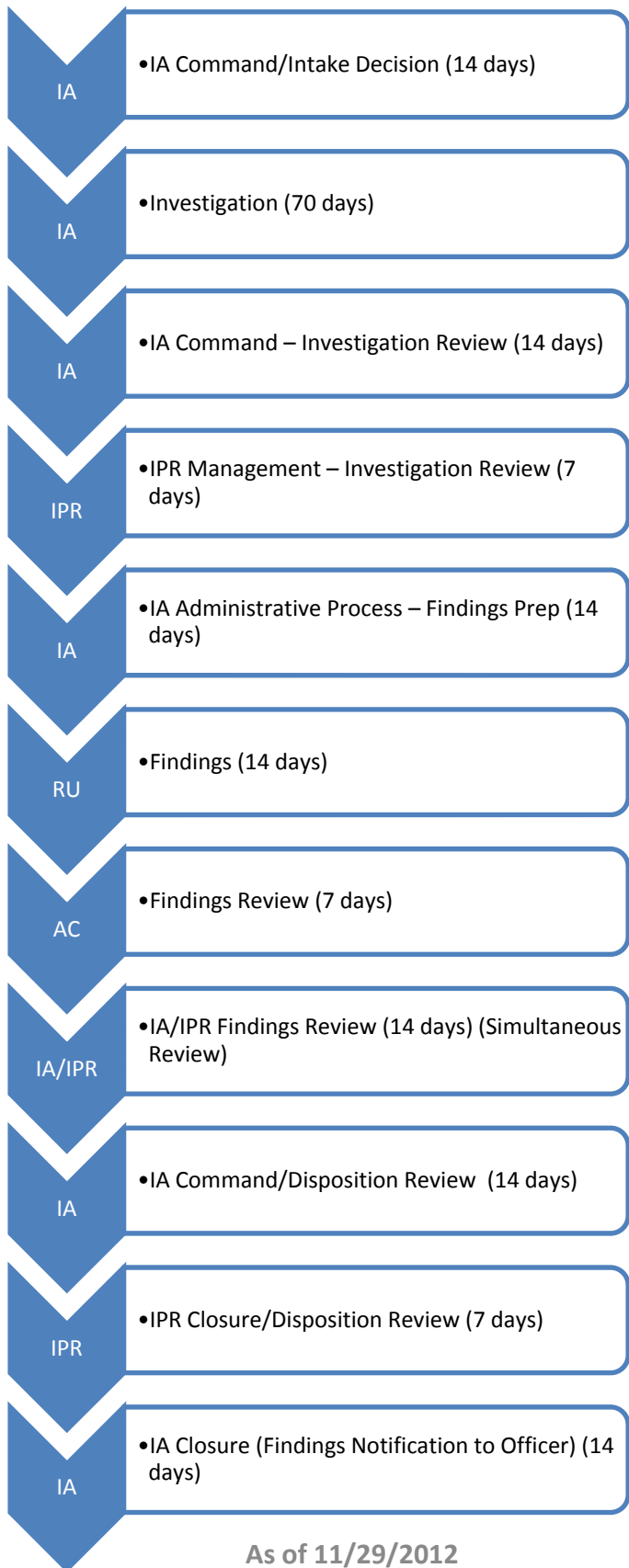
As of 11/29/2012

OIS/ICD Case w/PRB. New timelines would reduce it to – 170 Days

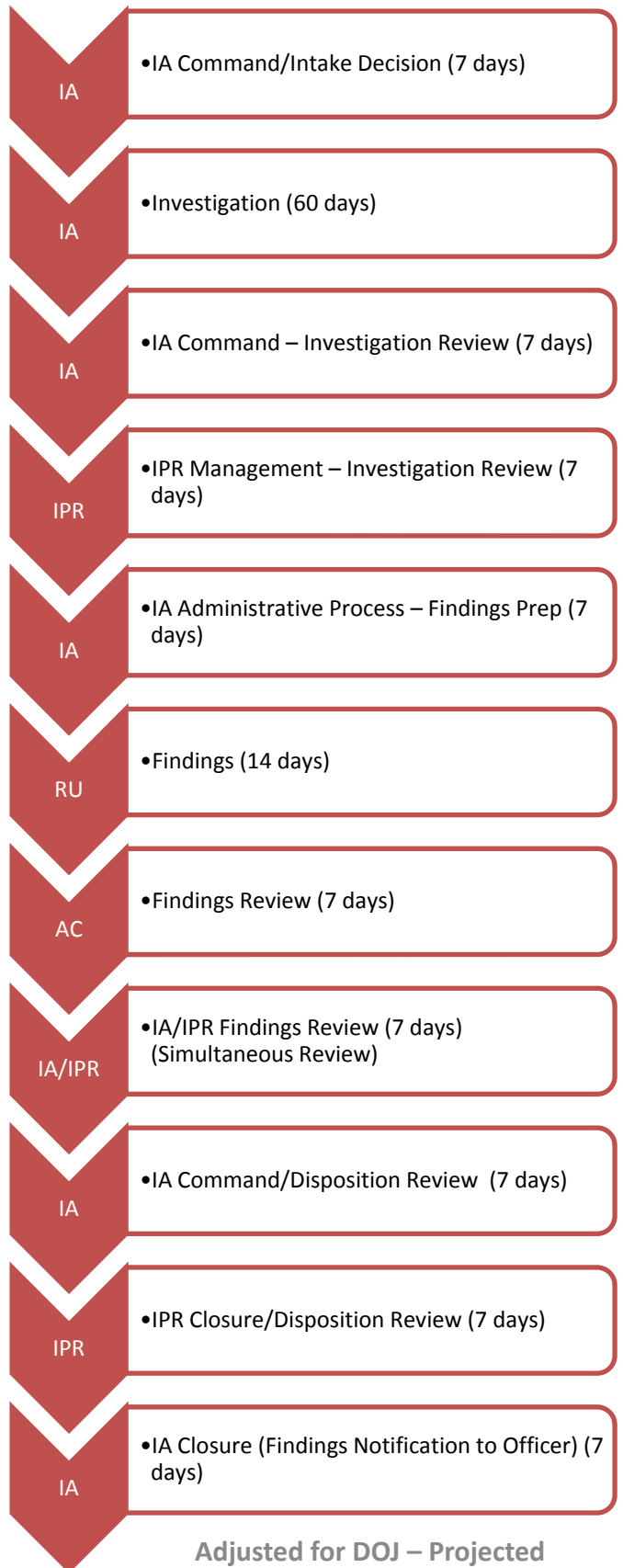


Adjusted for DOJ – Projected start date: 01/01/2013

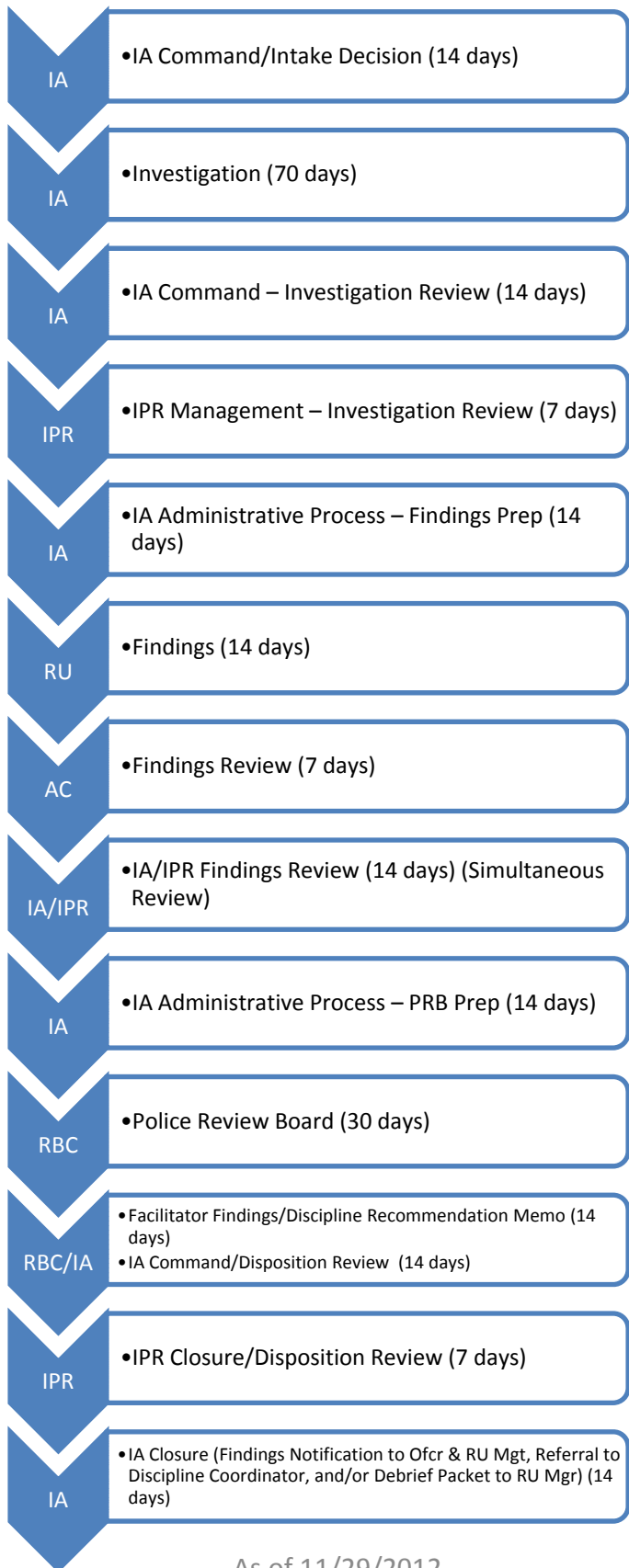
Bureau Initiated Case w/No PRB. Current timelines – 189 Days



Bureau Initiated Case w/No PRB. New timelines would reduce it to – 137 days



Bureau Initiated Case w/PRB. Current timelines – 233 Days



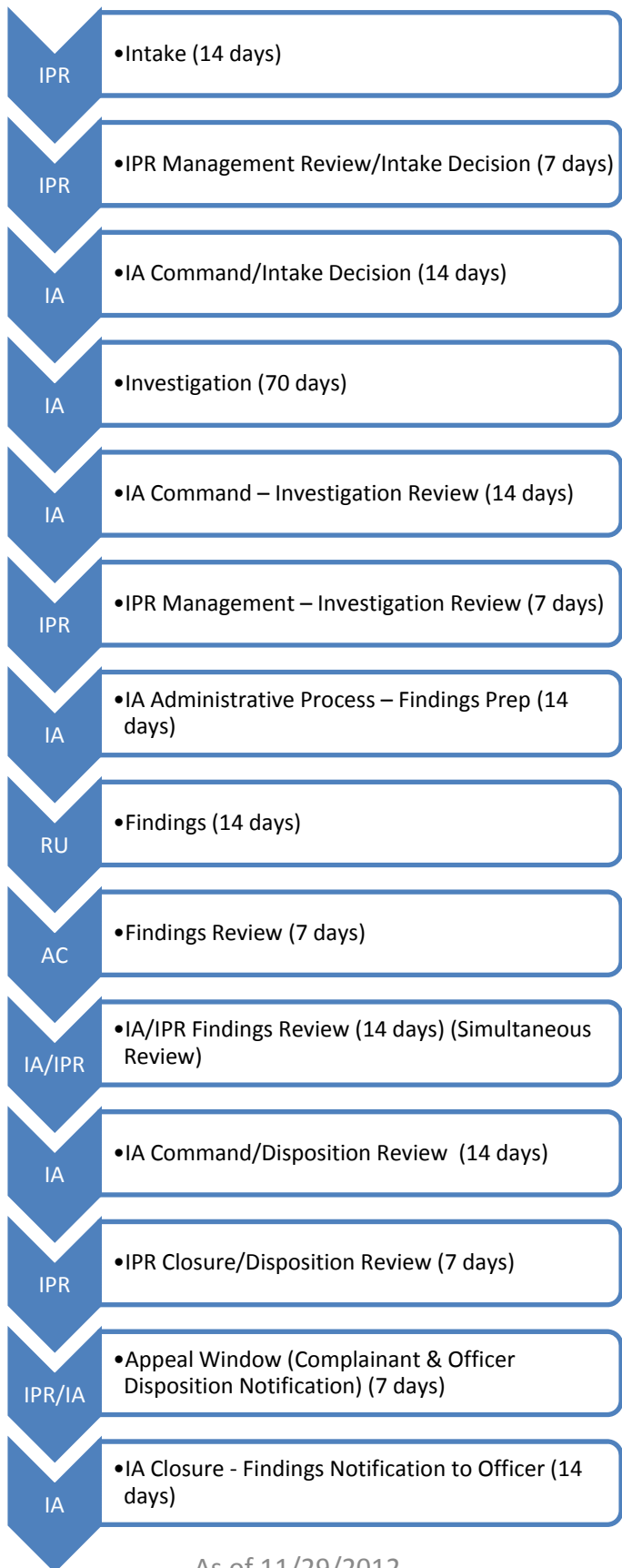
As of 11/29/2012

Bureau Initiated Case w/PRB. New timelines would reduce it to – 174 Days



Adjusted for DOJ – Projected start date: 01/01/2013

Citizen Initiated Case w/No PRB & No Appeal. Current timelines – 217 Days



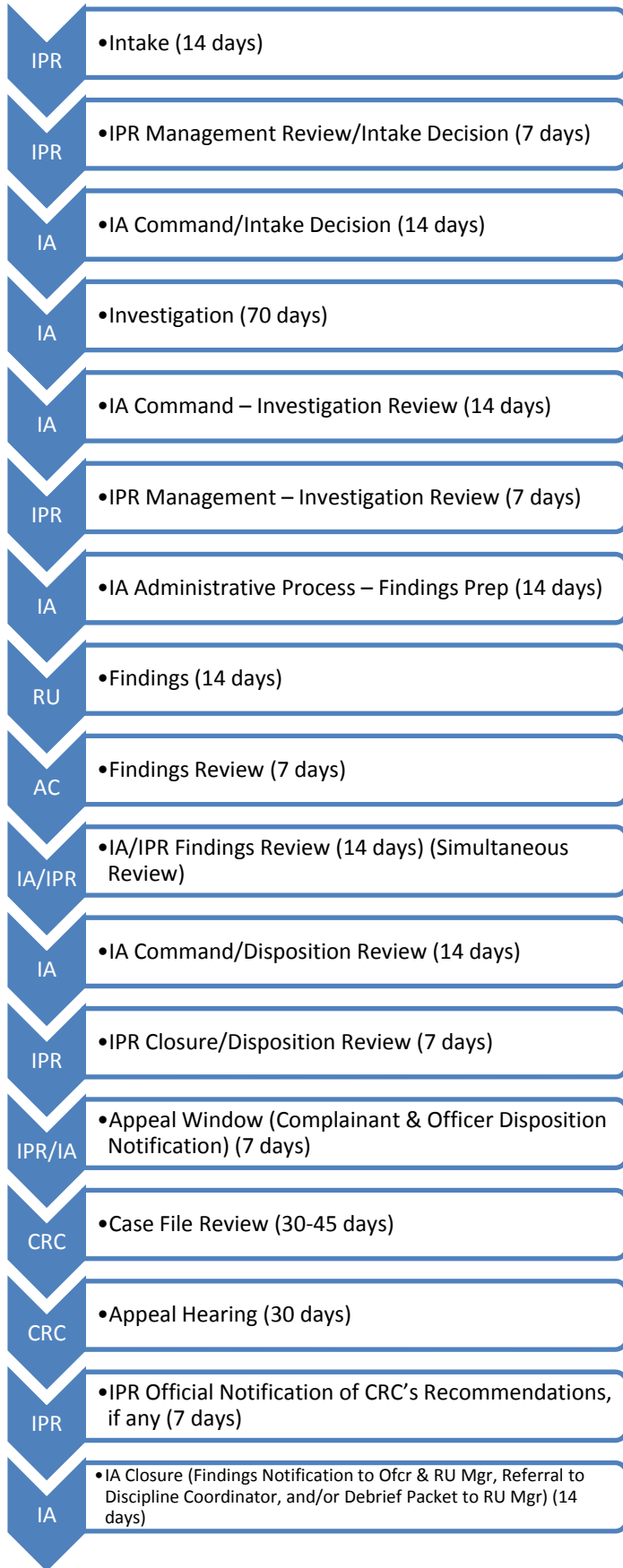
As of 11/29/2012

Citizen Initiated Case w/No PRB & No Appeal. New timelines would reduce it to – 165 Days



Adjusted for DOJ – Projected start date: 01/01/2013

Citizen Initiated Case w/No PRB & Appeal.
Current timelines – 284-299 Days



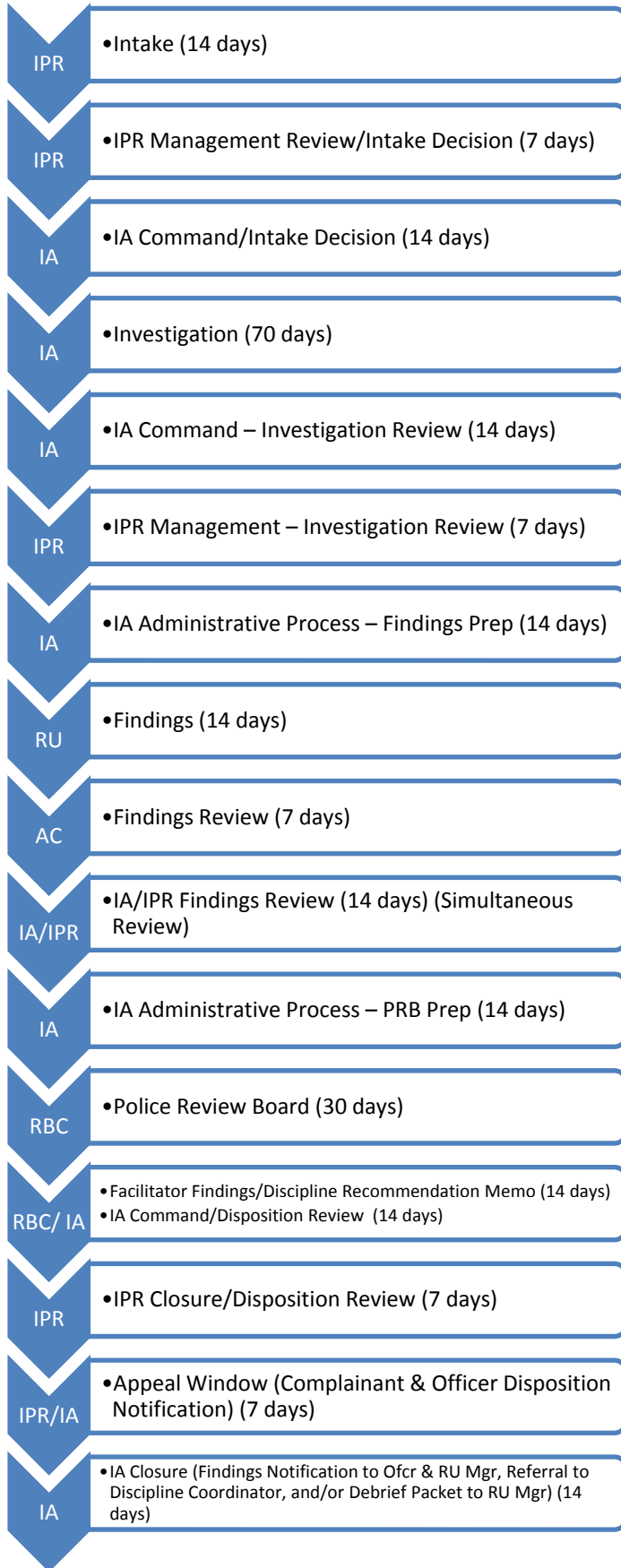
11/29/2012

Citizen Initiated Case w/No PRB & Appeal.
New timelines would reduce it to – 193 Days



Adjusted for DOJ – Projected
 start date: 01/01/2013

Citizen Initiated Case w/PRB & No Appeal.
Current timelines – 261 Days



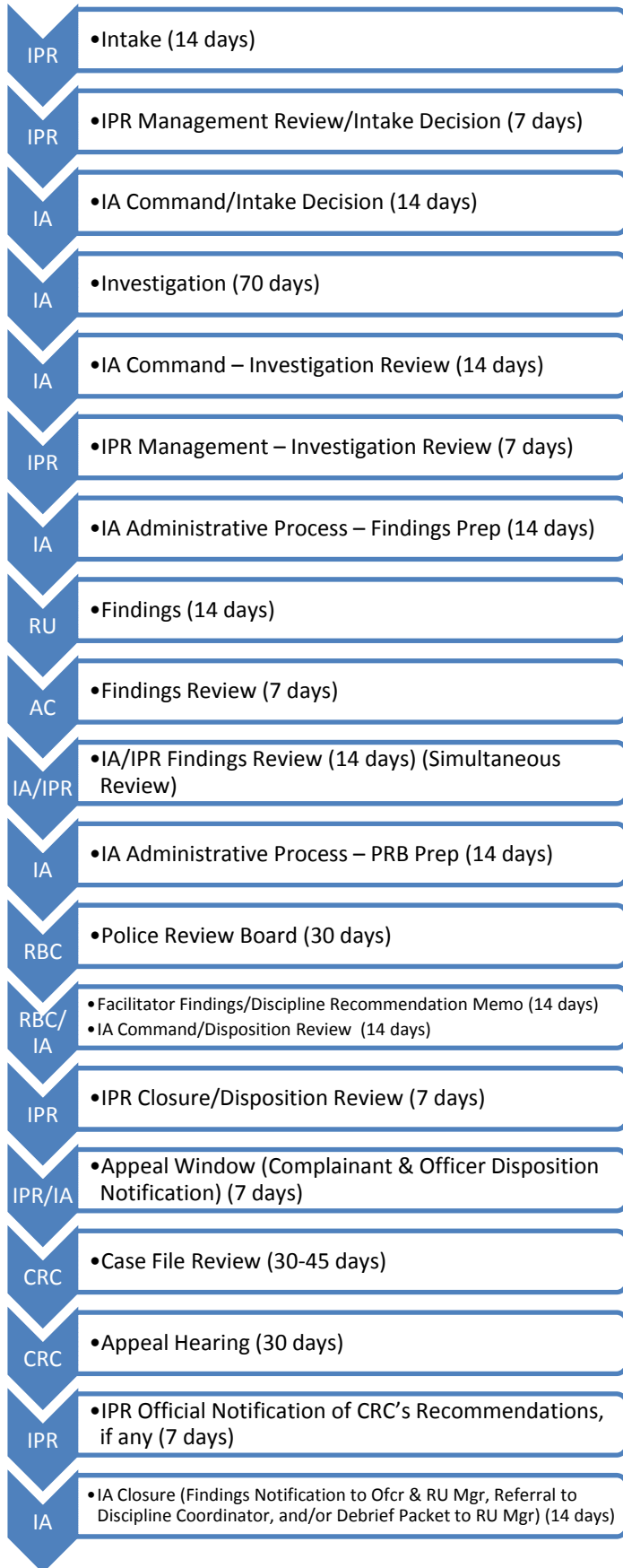
As of 11/29/2012

Citizen Initiated Case w/PRB & No Appeal.
New timelines would reduce it to – 202 Days



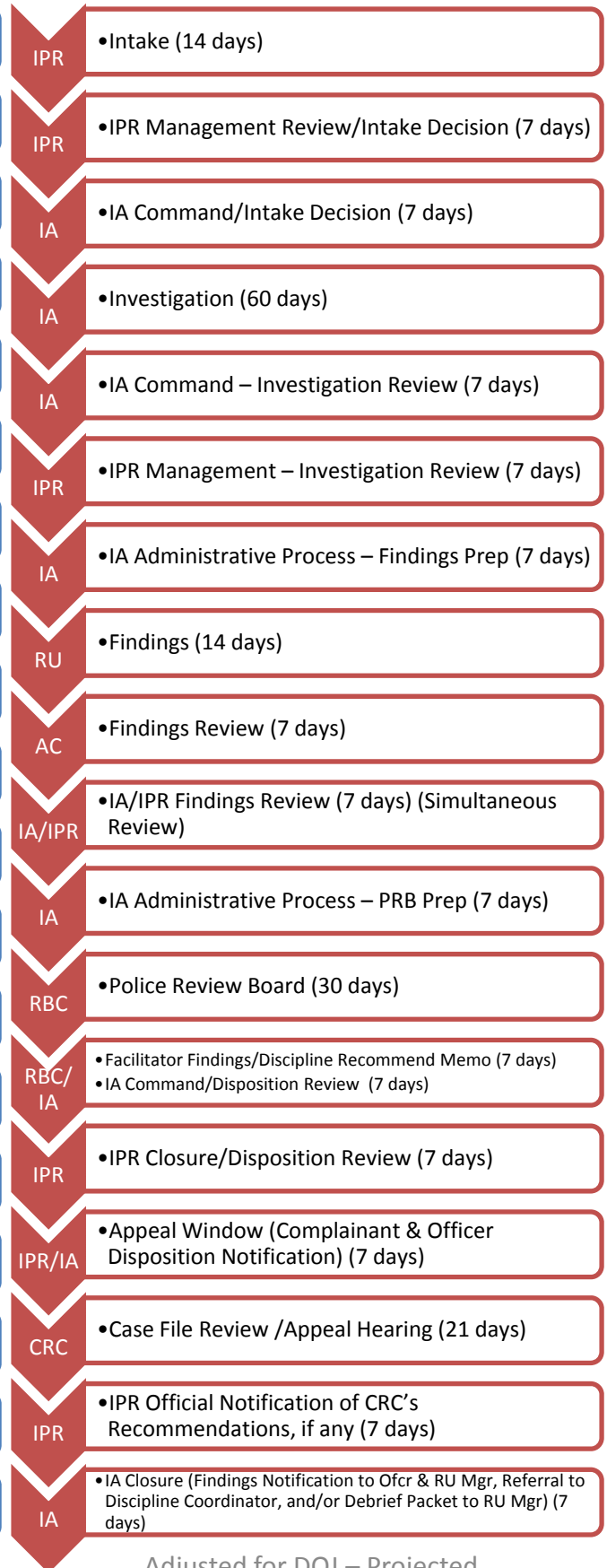
Adjusted for DOJ – Projected
 start date: 01/01/2013

Citizen Initiated Case w/PRB & Appeal.
Current timelines – 328-343 Days



As of 11/29/2012

Citizen Initiated Case w/PRB & Appeal. New timelines would reduce it to – 230 Days



Adjusted for DOJ – Projected
 start date: 01/01/2013