

*Portland Police Bureau
2002 Statistical Report*

*Building Partnerships
Through Community Policing*



**Vera Katz, Mayor
Mark A. Kroeker, Chief of Police**

Table of Contents

Portland Police Bureau 2002 Statistical Report

Table of Contents

Chief's letter	1
Accomplishments	2-6
Organizational Chart	7
Personnel Distribution	8
Calls for Service	9
Part I Crimes.....	9
Neighborhood Association Maps	10-11
Reported Offenses per Neighborhood	12-14
Patrol District Maps.....	15-16
Reported Offenses per District	17-18
Adult and Juvenile Arrests	18
Arrests	19
Appendix A	20-21

2002 Demographics of Portland

Population ¹	538,180
Total Sworn Officers	1,048
Total Non-Sworn.....	282
Sworn Officers per 1,000 Population	1.95
Square Miles of Portland ²	146.6

Cover photograph © 2004 Chris Greenwood Photography

1. Center for Population Research and Census, Portland State University
2. City of Portland, Office of Finance and Administration, Urban Services Program

Dear Reader:

In 2002, the Bureau celebrated 150 years of dedicated service to the City of Portland. We are proud of our history of policing and the foundation of community policing activities we do today. Our focus remains on reducing crime and the fear of crime. We are in our 12th year of community policing and we have distributed our 2002-04 Community Policing Strategic Plan. This plan guides us with the mission, values and goals of the Bureau.

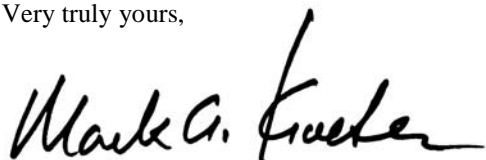
This year clearly demonstrated the collaborative efforts the Bureau and the community made toward achieving an improved quality of life in our neighborhoods and increased community partnerships that enhance the livability of our city:

- The Goose Hollow car prowling pilot program is an illustration of excellent community policing. The Senior Neighborhood Officer worked with the neighborhood association, businesses and neighbors on a campaign to reduce car prowls. McGruff signs and brochures informing neighbors how to protect themselves and their vehicles were posted or placed on vehicles parked in the neighborhood.
- The Regional Economic Crime Summit held in September was a success. The summit was a collaborative team of regional leaders from law enforcement, district attorneys, banking institutions and private security who discussed the goal of establishing a crime investigation center to help reduce victimization of identity theft and economic crimes.
- The Police Bureau launched its Intranet to enhance and improve communication among precincts and divisions. Bureau members are now able to access Bureau directives and forms, watch roll call videos and receive Chief's correspondence.
- Our police advisory committees are vital partners in all community policing activities. We signed a new partnership agreement with the Sexual Minority Roundtable this year. And we formed an Arab Muslim Police Advisory Council to represent the interests of this community and encourage involvement.

We also paused to reflect on the loss of a valued member. Officer Kirk R. Huffstetler died in a traffic collision while responding to a call for service. We remember him for his professionalism and his commitment to the Bureau and the communities he served.

These are just a few of the accomplishments for 2002. Additional accomplishments are outlined in this report.

Very truly yours,



MARK A. KROEKER
Chief of Police

Portland Police Bureau 2002 Accomplishments

Strategic Plan

The 2000-2002 Community Policing Strategic Plan was adopted at council in March 2001. The Bureau's mission states:

The mission of the Portland Police Bureau is to maintain and improve community livability by working with all citizens to preserve life, maintain human rights, protect property and promote individual responsibility and community commitment.

The Bureau pursues the following six goals:

Community goals:

- Reduce crime and fear of crime
- Improve the quality of life in neighborhoods
- Improve the community and police partnership

Organizational goals:

- Develop and encourage personnel
- Obtain and make effective use of technology and equipment
- Continuously improve work processes

Reduce crime and fear of crime

Auto Theft Task Force solves major cases

In July, members of the Auto Theft Task Force solved four major cases resulting in the recovery of 27 cars tied to eight suspects. In addition to the recovered cars, the officers recovered more than \$5,000 in cash from a robbery and a large amount of stolen property.

Crime rate

Statistics for reported crimes in Portland, comparing 2001 and 2002, show a reduction in the categories of murder, aggravated assault, and larceny (theft). Murder decreased from 22 to 20 incidents. Overall, total Part I offenses remained about the same as last year.

Leaders join forces to combat crime

In an effort to combat increased prostitution and narcotics activity in the Lower Burnside area, Southeast Precinct and 36 businesses signed the Lower Burnside Area Business Agreement (L.E.B.A.) in January. The goal of the L.E.B.A. is to: 1) have all parties become partners in an agreement to provide business owners with a tool to reduce and prevent crime from occurring on their properties; 2) create uniform exclusion requirements of all participating businesses; and 3) maintain open communication between all parties involved. This agreement is an example of a community policing strategy being used to bring the community, police, and businesses together to solve crime.

Portland receives recognition for National Night Out

Portland ranked 9th in a field of 21 entries in the Category 1-300,000+ population. Neighbors gathered at 126 National Night Out (NNO) parties in Portland this year between July 31 and August 11. Overall NNO attendance in Portland for 2002 was 12,000.

Improve the quality of life in neighborhoods

Downtown Portland focused enforcement

In response to community concerns from downtown Portland businesses, the Bureau focused enforcement strategies such as a two-officer bicycle unit and conducting specific missions to reduce street crimes and disorder problems. Working together with the criminal justice and social service agencies, the business community, and the community, these partners were able to offer outreach and alternative options for the homeless.

Drug Free and Prostitution Free Zones updated

A question and answer section was added to the trespass exclusion forms for Drug Free Zones and Prostitution Free Zones to make it easier for people to read and understand. The boundary maps were updated. The zones continue to be an effective problem solving tool for police and neighborhoods.

Evolverment

Work neared completion on the Evolverment project to use web-based technologies to foster community organizing, with community policing as the topic for the initial pilot. The future website will allow community members access to more timely information on neighborhood issues, and allow them to send questions and feedback to government officials. Partners from AT&T Broadband, One Economy, the Police Bureau, the Bureau of Information Technology and the Office of Neighborhood Involvement Crime Prevention program participated on the project, with a launch date set for January 2003.

Goose Hollow car prowling reduction pilot program

On October 11, thirty Goose Hollow community volunteers met to distribute 3,000 fliers designed to educate and inform vehicle owners on how to avoid becoming the victim of a car prowling. In June, the Senior Neighborhood Officer began to educate residents about how to keep their vehicles safe. The pilot project will last 90 days, and the crime analyst will look at the crime trends in the area of the pilot program and determine effectiveness.

Improve the community and police partnership

Arab/Muslim Police Advisory Council formed

Chief Kroeker established the Arab/Muslim Police Advisory Council to gain input and create an ongoing dialog between the Police Bureau and the Arab and Muslim communities. The Council will meet on an ongoing basis. The mission for this advisory council is being developed by its members.

Identity theft brochure and partnership

The Police Bureau and U.S. Bank began a partnership to fight identity theft, which resulted in a colorful and informative brochure, distributed in November, that arms Portland residents with information to protect themselves from identity theft. It also gives individuals a course of action when identity theft occurs.

Police Bureau signs the sexual minority partnership agreement

On June 1, the Police Bureau signed a partnership agreement with the Sexual Minority Roundtable. The agreement signifies the continued mutual commitment and working relationship between the partners of the Sexual Minority Roundtable, a Bureau advisory group; Portland Police Bureau; Multnomah County Sheriff's Office; and the sexual minority community.

Police distribute "Teens and Laws" card to Portland Teenagers

The "Teens and Laws" card is designed to educate teens on what they should know if they are stopped by Police. The card includes information on driver responsibilities, curfew times, and constitutional rights. Members of the Blue Ribbon Panel on Racial Profiling and the African American Advisory Council worked with the Police Bureau to design the card printed in English and Spanish. The Bureau started handing out the cards in November.

Regional Economic Crime Summit

On September 25, members of the financial, business, and law enforcement communities met to discuss forming an Economic Crime Investigation Center. Goals for the Center include sharing intelligence, training, and the responsibility of investigating economic crime. The Center will be a cooperative effort between the financial, business, and law enforcement communities.

Develop and encourage personnel

Chief's Forum Awards

On April 1, the Chief's Forum honored the following individuals for their contributions to community policing. Officer Tashia Hager was awarded the Nathan Thomas Memorial Award. Officers Andy Madden and George Carl received a Special Recognition Award. The Community Policing Problem Solving Awards were awarded to: Ceasefire Oregon Education Foundation, Sunnyside Centenary United Methodist Church Foot Patrol, Weed and Seed Neighborhood Livability Missions Program, Mt. Tabor Park Host Patrol, Officer Roger Axthelm, Captain Lynnae Berg, Officer Barbara Glass, Sgt. James Powell, Officer Jason Preston, Officer Teresa Uttke, P.K. Wall, Mark Warrington, Officer Paul Wickersham, Officer Tracy Bertalot and Officer Randy Brandt. Certificates of Appreciation were awarded to: the Southeast Precinct Citizens Advisory Rapid Response Team Council; Noticias Latinas/Latin News; Jeff Augustine; Alta Gaylord, Dr. Michael Hess; Officer Phil Kent; Jeffrey Rodney Lee; Jose Martinez; Carla Thaler; Gloria Wong; Det./Sgt. David Yamasaki; Cindy and Bob Benson; David Columbus, Christian Davis and Jonathan Tallman; Dennis and Sally Kemple; and Marcia Dennis and Rhett Drennan. The Youth Recognition Certificate was awarded to the Youth Advisory Council to Northeast Law Enforcement.

Medal of Valor

On May 7, seven current and one former Portland Police Bureau Officers received the Medal of Valor, which is the highest honor for a Portland Police Officer. The 2002 recipients are: Officers Scherise Bergstorm, Christopher G. Humphreys, Shawn Gore, Joshua Letter, David K. Michaelson, Sgt. Lawrence P. O'Dea, and former Officer Craig Ward.

General Awards Ceremony

On November 19, the Bureau held its General Awards Ceremony and honored the following individuals and groups:

Citizen Medal – Heroism

Mr. Jeff Wood

Police Star

Officers Christian Barker, Christopher Guzman, Robin Long.

Police Medal

Sgts. G. Todd Davis, Scott Johnson, Robert McCormick, Randy Teig; Officers Christian Barker, Jeffery Bell, Brent Christensen, Chauncey Curl, Jon Dalberg, Christopher Davis, Matthew Delinikos, Christopher Gilbert, Rian Hamby, Brian Hubbard, Brian Hunzeker, Pat Keating, Lawrence Keller, Michael Kemp, Christopher Kenagy, Paul Kennard, Phillip Maynard, Stephen Mosier(Retired), Micah Persons, Robert Pippen, Thomas Powell, Kent Scott, Steve Staul, Tim Taaca (Gresham Police), Joel Wendlant (Troutdale Police), Scott Westerman; Reserve Commander Robert Ball; Reserve Officers Michael Glass, John Wood; Melvin Shanders, Greg Wong (Portland Fire Bureau).

Life Saving Medal

Sgts. John Anderson, John Eckhart, Dale Larson, Jeffery Miller, Randy Teig, Matthew Wagenknecht; Officers Rico Beniga, William Bloomstrom (2 awards), Stephen Bourasa, Anthony Cavalli, Ryan Coffey, James Dakin, Jason Faulk, Michael Geiger, Paul Jensen, Jason Jones, Lawrence Keller, Fred Kellogg, Peter Kurronen, Sze Lai, Stephanie Lourenco, Thomas Mack, Scott McLemen, Edgar Mitchell, Michael Myers, Troy Pahlke, Eric Peterson, John Rebman, Jeffery Sharp, Mark Slater; Reserve Officer Martin Sinnott; James Clausen, Bethany Hansell, Cristy Rushing (citizens)

Distinguished Service Medal

Commander James Ferraris; Lts. Robert Baxter (Retired), Lawrence Kochever; Sgts. Edward Brumfield, Steven Larsen; Officers Barbara Glass, Dick Karman(Retired), Michael Kemp, James Lawrence, Peter McConnell, Joseph Savage; Steven Beedle (Program Manager); Sara Lapham (Police ID Technician); Mary Danford (Deputy City Attorney); Michael Sanderson (Bureau of Licenses)

Achievement Medal

Assistant Chief Greg Clark; Commander David Benson; Captain Scott Winegar; Lt. James Maciag; Sgts. Kim Keist, Dale Larson; Det. Carol Miller; Officers Jay Bates, Len Braithwait, Tim Evans, Michael Krantz, Steve Rickeard, Michael Villanti; Jerry Gray (Applications Analyst); Jennifer Lawrence (BHR Analyst)

Commendation Medal

Sgts. Gary Certosky, Doug Justus; Officers Charlie Fender, Randy Gottwald, Lawrence Graham, Teresa Uttke; Rebecca McShane (ID Technician); Nelson Zenzano (Information Systems Specialist); Donald Barber, Lori Buckwalter, David Columbus, Christian Davis, Jonathon Tallman

Unit Commendation

Portland Police Bureau: Canine Unit, Crisis Intervention Team, Northeast Precinct-Operation Ajax, Northeast Precinct-Operation Neighborhood Relief, North Precinct-Detectives, Crime Analysis and NRT, North Precinct-Bicycle Safety Awareness Project, Planning and Support Division, Personnel Division, Southeast Precinct, Special Emergency Reaction Team, TOD-Gang Enforcement Team and Youth Gun Anti-Violence Task Force, TOD-Gang Enforcement Team, Traffic Division, Training Division, TriMet Transit Police Division; Multnomah County Community Justice Adult Parole and Probation-Operation Ajax.

Employee Survey

In July, the Bureau completed the employee survey. The questions asked in this survey were revised to reflect current Bureau issues. The new questions focused on operations, communications and internal affairs. Future employee surveys will be revised to cover current Bureau needs and concerns.

Police Bureau celebrates 150 years of service

The Portland Police Bureau celebrated 150 years of dedicated service to the communities of Portland during 2002. The Bureau authorized a commemorative badge through City Ordinance to be worn as an official Police badge by Bureau members from January 1, 2002 to December 31, 2002.

Roll call training

In September, the Bureau implemented training for all personnel through standardized videos and lesson plans. This training supports an environment of continuous learning. These trainings are geared toward the operations functions within the Bureau, however, many are offered bureauwide.

Obtain and make effective use of technology and equipment

Bureau Intranet launch

In May, the Bureau launched an internal website that provides timely information to all Bureau personnel. Bureau members can access information currently available on the Bureau's Internet site, as well as Bureau publications, reports and forms. The site allows for better information sharing between precincts and divisions; provides easy access to Bureau, precinct and division news; and reduces printing and distribution cost for internal documents.

Mounted Patrol Equestrian Facility grand opening

On January 11, Mayor Katz, Chief Kroeker, the Friends of the Mounted Patrol and community leaders joined members of the Mounted Patrol Unit at a ceremony to commemorate the grand opening of the new Mounted Patrol Equestrian Facility. With the City's recent purchase of Centennial Mill, the horses, officers and canine unit have a new home complete with a covered paddock, stalls and tack room, training pen and offices.

Public Information Officer website launch

The new Public Information Office website provides visitors with easy access to Police Bureau news releases, CrimeStopper alerts, photographs, and other news related information. The site was developed jointly by the Portland Police Bureau's Planning and Support Division and the Bureau of Information Technology, CGIS division. This site streamlines Police Bureau communications to both the media and the community by offering 24/7 access to Police Bureau news. In addition, users have the option of subscribing to the newly developed e-mail notification system to receive alerts whenever news is added or update. The site went live on June 26.

Red light cameras installed

In an effort to reduce the number of collisions, associated injuries, and deaths due to red light violations, the Bureau implemented a Red Light Traffic Enforcement Program. There are currently three intersections where cameras have been installed. The system combines a high-speed camera connected to a traffic signal and sensors buried in the pavement at the stop line, which continuously monitors the signal. After the signal turns red, the camera is triggered to photograph any vehicle entering the intersections and a citation is sent to the registered owner. A publicity campaign was initiated to educate drivers about photo enforcement and deter violations.

Taser pilot project

The Bureau's training division began a six-month trial of the M26 Advanced Taser guns on July 1. The Tasers give officers another tool when faced with a situation that calls for less than lethal force. The Taser is a weapon that, when discharged, incapacitates a person by emitting 26 watts of electricity. This overrides a person's central

nervous system and causes them to have uncontrollable muscle contractions, allowing officers to move quickly and take the person into custody.

Continuously improve work processes

4-10 evaluation at three and six months

On October 25, 2001, the Bureau's Operations Branch moved from a 5-8 to a 4-10 work week. A task force convened and was charged with developing the most effective and efficient 4-10 schedule for the Operations Branch personnel. The task force conducted three and six month evaluations in March and May 2002. These evaluations looked at response time to emergency calls and overtime expenditures. They found the general trends of the six month data to be similar to the results from the three month evaluation: increases in overtime have lessened and response time to emergency calls stayed roughly the same.

Directives – annual review completed

The first annual review of the Bureau's Policy and Procedures manual was completed in August. Every Bureau member received an updated copy of the manual, which includes all of the Bureau's directives and a section highlighting the changes in policy and procedure.

Internal Affairs Division Research Project

The Bureau contracted with Campbell DeLong Resources, Inc. to conduct an assessment of the Internal Affairs process. The objectives of the assessment were to review and analyze existing Internal Affairs Division (IAD) data to provide objective, quantitative information on the impact of adding five additional Sergeants to the division in the fall of 2000 and to make recommendations regarding the use of existing data, as well as new data that could be collected, in order to provide more complete information on the IAD performance. In response to the assessment, the Bureau is initiating new strategies to make the IAD process more effective and efficient.

Regular crime analysis meetings and trends with commanders, Mayor and community

In May, Planning and Support crime analyst support personnel were paired with precinct crime analysts to conduct joint crime analysis projects looking at precinct crime trends and operational responses. Presentations were made to the Mayor, the Chief's Forum, and community groups.

Significant Events**Death of Portland Police canine**

On December 10, Officer Bret Combs and his canine partner, Lex, assisted Oregon State Police and Central Precinct officers on a search for a parole violator wanted on a sex crimes charge. The suspect was located after an approximate 20 minute track. As officers were taking the subject into custody, Lex collapsed. He was taken to Pacific Veterinary Hospital where he was pronounced dead from an apparent heart attack. Lex was a seven year old German Shepherd who had served the Bureau for six years as Officer Combs' partner. Lex had 126 career captures.

Motorcycle Officer in traffic collision

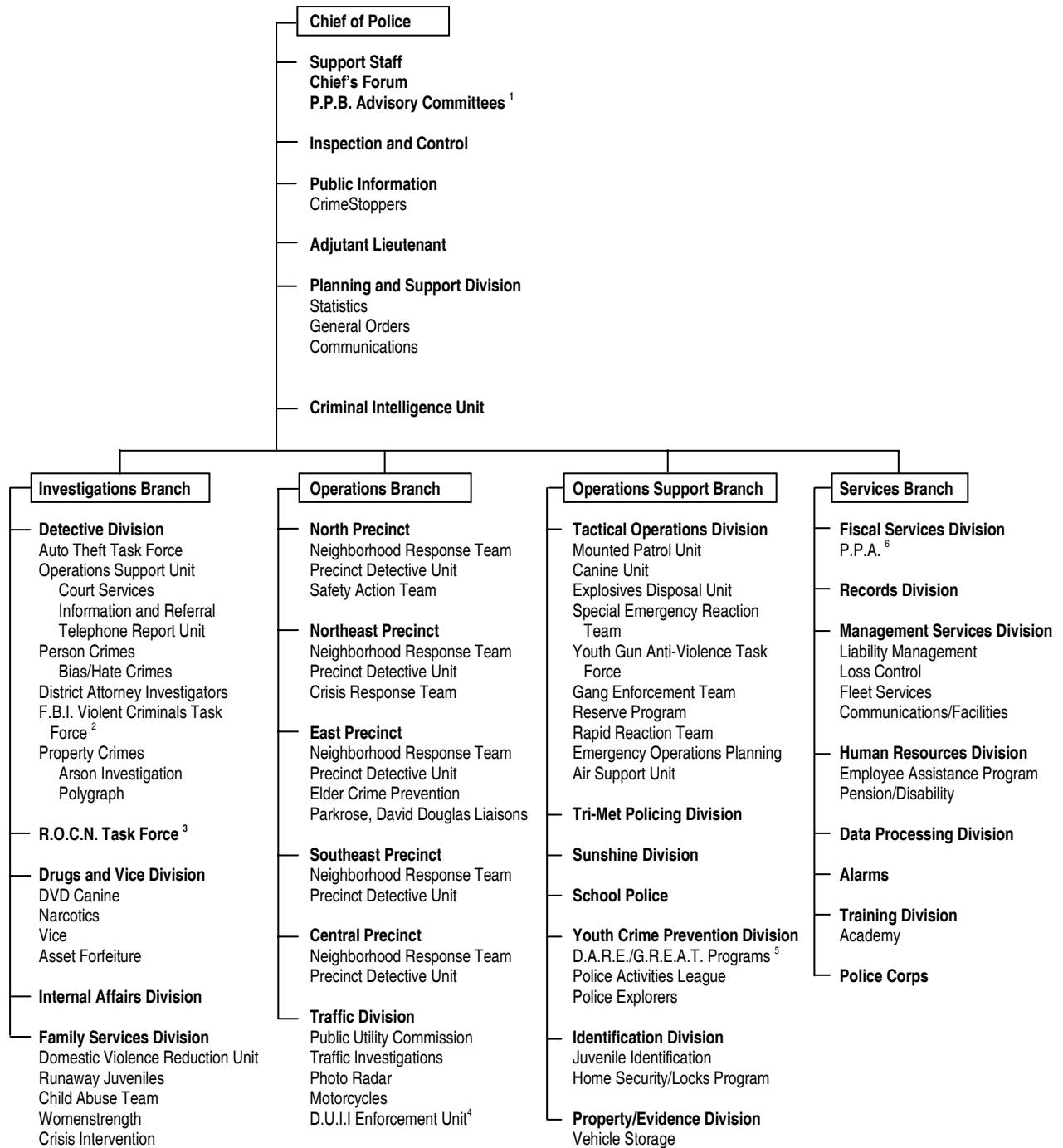
On January 6, Officer Christopher Guzman was struck by a vehicle that either failed to stop or stopped at a stop sign and then pulled out into Officer Guzman's path, thereby causing a collision. Officer Guzman was transported to the hospital where he was listed in critical condition with head injuries and a broken leg. Officer Guzman was released from the hospital after an extensive stay. The driver of the other vehicle was charged with Driving Under the Influence of Intoxicants, Assault in the Second Degree, and Recklessly Endangering.

Officer killed

On May 26, Officer Kirk R. Huffstetler was killed when his police vehicle struck a concrete wall. Officer Huffstetler was responding to a robbery scene. Officer Huffstetler had been a member of the Portland Police Bureau since November 1, 2001, prior to that he was a police officer with the Portland Public Schools.

Officer shot

On October 18, Officer George Weseman Jr. was hospitalized after being shot in the head while investigating a check fraud. On October 29, a Multnomah County Grand Jury indicted the 16-year-old shooter on three counts of Attempted Aggravated Murder with a Firearm, one count of Attempted Aggravated Felony Murder with a Firearm, one count of Assault in the First Degree with a Firearm, two counts of Forgery in the Second Degree, and one count of Unauthorized Use of a Weapon with a Firearm. Officer Weseman was released from the hospital on November 21.



Source: Portland Police Bureau
Organizational Chart
10-1-2002

Footnotes: See page 21

Personnel Distribution

8

	Chief & Asst. Chiefs	Cmdr.	Capt.	Lt.	Sgt.	Det.	Crmlst.	Officer	Total Sworn	Total Non Sworn	Total
Chief's Branch											
Chief's Office	4	0	0	2	2	1	0	7	16	8	24
Planning & Support	0	0	0	0	0	0	0	3	3	13	16
Operations Branch											
Central Precinct	0	1	0	3	14	3	0	122	143	12	155
East Precinct	0	1	0	3	14	3	0	136	157	9	166
North Precinct	0	1	0	2	13	4	0	58	78	7	85
Northeast Precinct	0	1	0	3	14	3	0	106	127	10	137
Southeast Precinct	0	1	0	3	14	3	0	129	150	9	159
Traffic	0	1	0	1	6	0	0	44	52	2	54
Investigations Branch											
Detective Division	0	1	0	3	10	62	0	21	97	21	118
Drugs & Vice Division	0	0	1	2	7	0	0	29	39	9	48
ROCN	0	0	1	0	0	2	0	0	3	0	3
Internal Affairs Division	0	0	1	1	9	0	0	0	11	2	13
Family Services	0	0	1	1	4	9	0	8	23	6	29
Operations Support Branch											
Tri-Met Division	0	0	1	2	3	0	0	15	21	1	22
Property Evidence	0	0	0	1	0	0	0	0	1	16	17
Tactical Operations	0	1	0	3	10	0	0	43	57	6	63
Identification Division	0	0	1	0	2	0	17	0	20	25	45
School Police	0	0	1	0	0	0	0	15	16	1	17
Youth Crime Prevention	0	0	0	0	0	0	0	2	2	4	6
Sunshine Division	0	0	0	0	1	0	0	0	1	0	1
Services Branch											
Police Corps	0	0	1	0	1	0	0	3	5	2	7
Alarms	0	0	0	0	0	0	0	0	0	4	4
Data Processing	0	0	0	0	0	0	0	0	0	8	8
Records Division	0	0	0	0	0	0	0	0	0	80	80
Human Resources	0	0	1	1	2	0	0	6	10	5	15
Training Division	0	0	1	1	2	0	0	9	13	4	17
Management Services	0	0	0	0	0	0	0	1	1	4	5
Fiscal Services	0	0	0	1	0	1	0	0	2	14	16
Totals	4	8	10	33	128	91	17	757	1,048	282	1,330

Source: Portland Police Bureau Organizational Chart of Authorized Positions, 10-1-2002.

Due to the city's budgetary constraints, the Police Bureau had budget authority to fill 1,023 sworn and 257 non-sworn positions.

Footnotes: See page 21, Personnel Distribution

Calls for Service

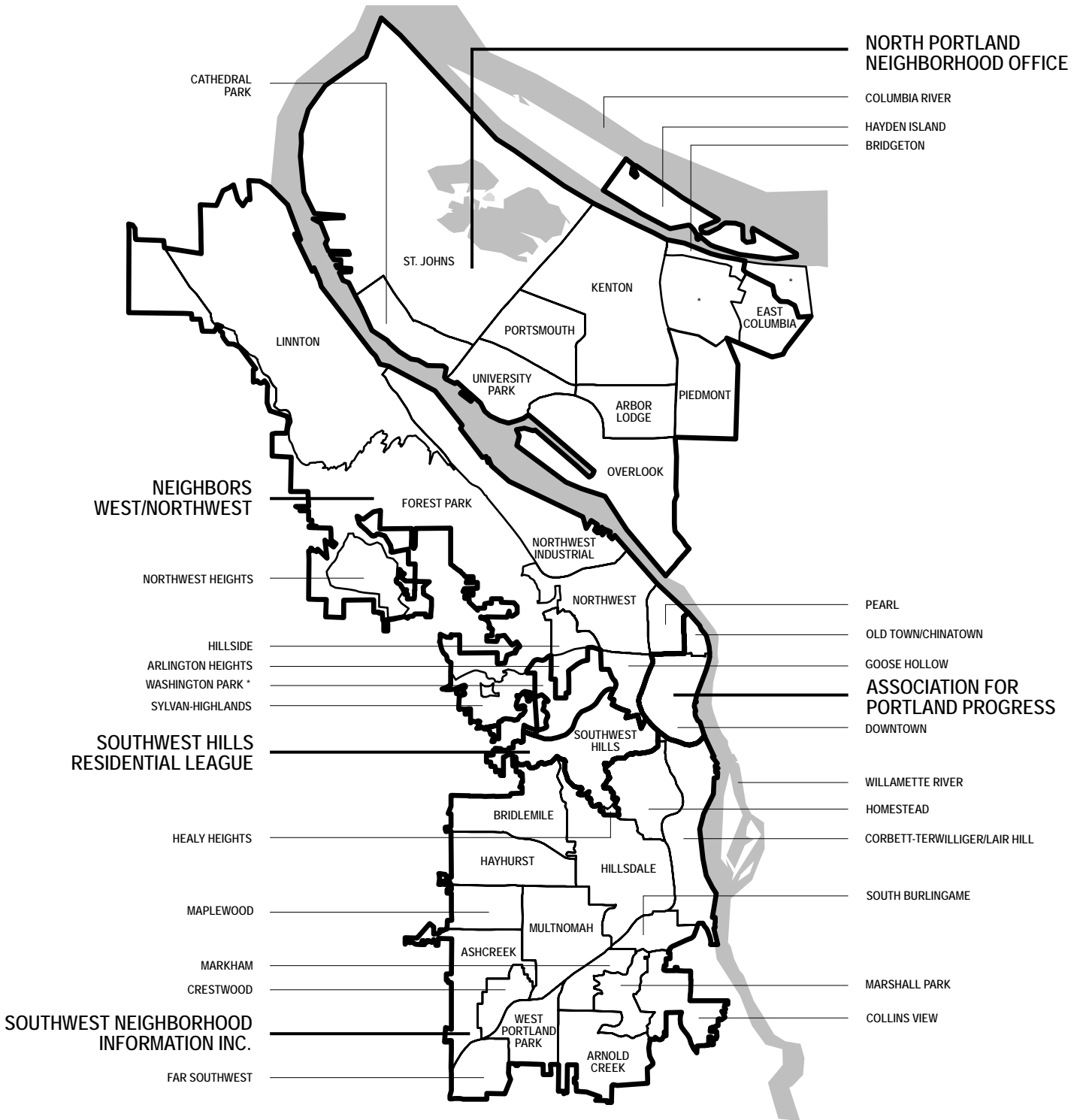
9

	1998	1999	2000	2001	2002
Dispatched Calls ¹	246,567	228,278	230,740	243,861	248,865
Rate of Dispatched Calls Per 1,000 Citizens	484	446	436	455	462
Self Initiated Calls	154,734	175,459	202,811	176,363	185,261
Officers Per 1,000 Citizens	2.03	2.04	1.96	1.96	1.95
Citizens Residing in Bureau's Service Area ²	509,610	512,395	529,121	536,240	538,180
Telephone Report Unit Calls for Service ³	54,652	51,981	48,433	44,840	38,973
Information and Referral Calls	146,434	137,187	132,149	140,640	155,531

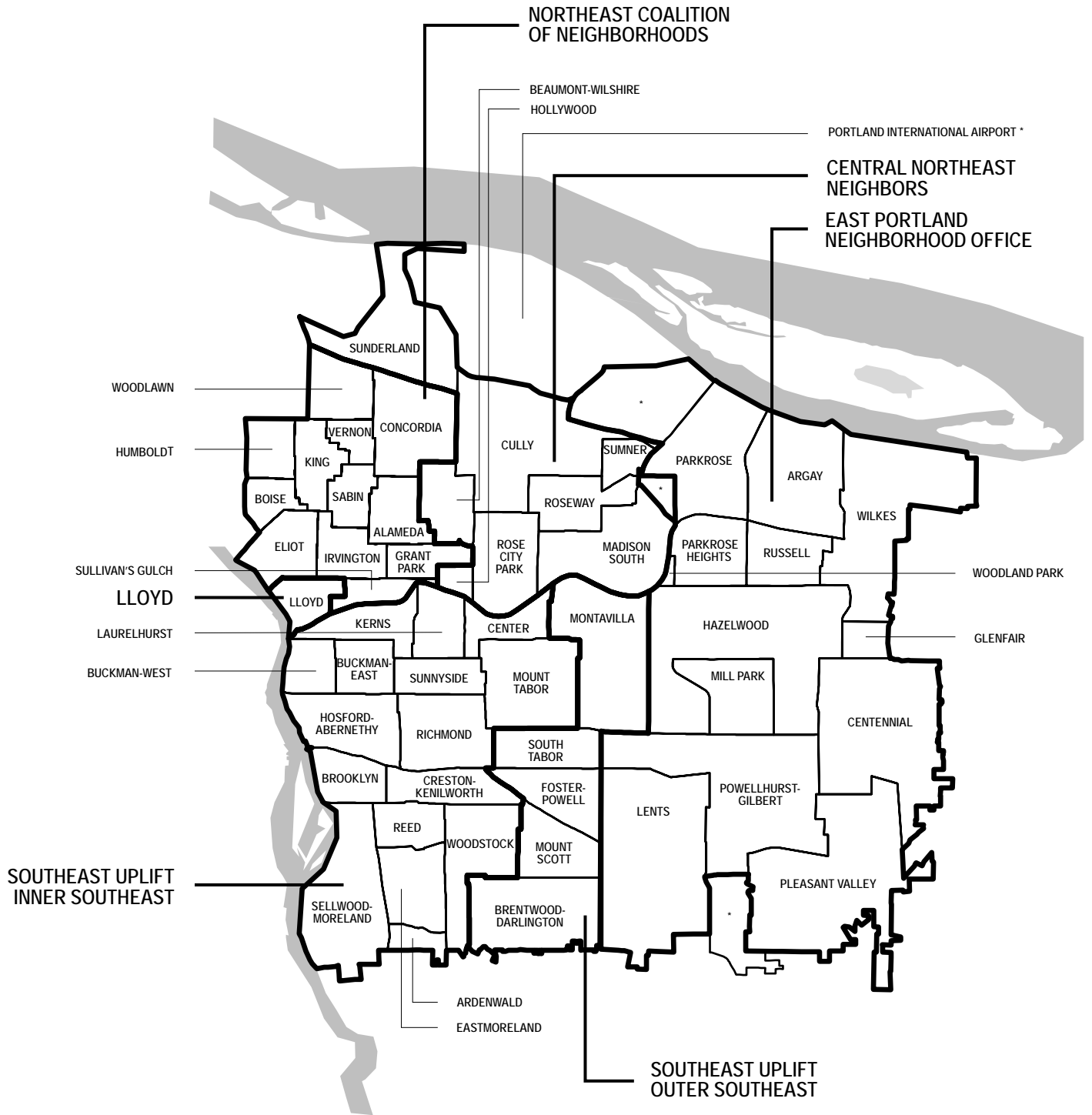
Part I Crimes ⁴

	1998	1999	2000	2001	2002	Percent Change 2001-2002
Crimes Against Persons						
Murder ⁵	28	36	18	22	20	-9%
Rape	361	340	369	305	354	16%
Robbery	1,641	1,428	1,455	1,272	1,296	2%
Aggravated Assault	4,681	4,501	3,864	2,963	2,844	-4%
Total Person Crimes	6,711	6,305	5,706	4,562	4,514	-1%
Rate of Person Crimes per 1,000 population	13	12	11	9	8	
Crimes Against Property						
Burglary	6,768	6,150	5,601	5,615	5,731	2%
Larceny	26,730	24,409	25,063	28,457	28,052	-1%
Motor Vehicle Theft	6,123	4,739	4,782	4,765	5,255	10%
Arson	456	468	510	385	496	29%
Total Property Crimes	40,077	35,766	35,956	39,222	39,534	1%
Rate of Property Crimes per 1,000 population	79	70	68	73	73	
Total Part I-Crimes ⁶	46,788	42,071	41,662	43,784	44,048	1%
Rate of total Part I-Crimes per 1,000 population	92	82	79	82	82	
Citizens Residing in Bureau's Service Area ²	509,610	512,395	529,121	536,240	538,180	

Footnotes: See page 21, Calls for Service/Part I Crimes



* Not an official Neighborhood Association



* Not an official Neighborhood Association

Reported Offenses per Neighborhood

12

	Murder	Rape	Robbery	Aggravated Assault	Burglary	Larceny	Motor Vehicle Theft	Arson	Total Part I	Total Part II	Total Part III	Grand Total	Rate\1,000 Population
North													
Arbor Lodge	0	3	19	30	74	406	47	4	583	460	840	1,883	308.5
Bridgeton	0	0	0	1	7	24	8	0	40	12	37	89	478.5
Cathedral Park	0	1	5	24	40	104	26	0	200	334	613	1,147	333.3
Columbia (East)	0	0	0	3	3	8	4	0	18	23	63	104	219.4
Hayden Island	0	1	9	15	43	432	85	5	590	300	431	1,321	692.3
Kenton	0	6	19	41	58	234	85	10	453	744	1,678	2,875	440.6
Overlook	0	8	14	43	120	261	57	7	510	565	1,126	2,201	343.6
Piedmont	0	7	16	48	71	172	51	8	373	433	872	1,678	250.4
Portsmouth	1	8	10	50	65	219	67	10	430	719	1,291	2,440	308.4
St Johns	2	9	30	96	119	498	88	10	852	1,143	2,138	4,133	421.6
University Park	0	2	3	11	46	155	27	2	246	226	391	863	173.9
Total North	3	45	125	362	646	2,513	545	56	4,295	4,959	9,480	18,734	344.2
Inner Northeast													
Alameda	0	0	4	4	43	92	13	0	156	111	200	467	83.6
Boise	0	4	11	31	81	124	17	5	273	392	699	1,364	412.7
Concordia	2	2	20	56	87	287	28	5	487	458	892	1,837	173.8
Eliot	2	6	23	46	71	419	82	8	657	468	1,030	2,155	761.8
Grant Park	0	0	10	8	59	129	17	5	228	165	227	620	157.4
Humboldt	1	8	33	82	58	257	41	5	485	655	1,210	2,350	462.0
Irvington	1	2	20	16	77	251	35	3	405	206	353	964	145.4
King	0	6	58	79	83	328	44	6	604	776	1,710	3,090	559.3
Lloyd	0	4	53	34	32	1,239	86	0	1,448	759	1,171	3,378	5,583.5
Sabin	0	1	13	14	60	159	18	3	268	204	324	796	179.4
Sullivans Gulch	0	2	26	17	38	360	40	2	485	360	587	1,432	545.9
Vernon	0	2	8	46	37	88	16	4	201	233	482	916	312.1
Woodlawn	0	6	15	36	46	199	36	2	340	384	864	1,588	300.0
Total Inner NE	6	43	294	469	772	3,932	473	48	6,037	5,171	9,749	20,957	353.0
Central Northeast													
Beaumont-Wilshire	0	0	3	12	45	108	12	0	180	198	303	681	115.0
Cully	0	5	23	95	129	423	105	7	787	879	1,941	3,607	308.7
Hollywood	0	0	16	7	21	144	31	1	220	163	309	692	587.9
Madison South	0	5	24	37	58	270	68	2	464	482	924	1,870	256.8
Rose City Park	0	7	6	13	68	239	54	3	390	234	506	1,130	122.5
Roseway	0	2	16	21	46	208	49	0	342	356	632	1,330	212.8
Sumner	0	3	1	12	22	57	11	3	109	194	428	731	403.2
Sunderland	0	1	1	3	20	71	28	3	127	35	113	275	1,627.2
Total Central NE	0	23	90	200	409	1,520	358	19	2,619	2,541	5,156	10,316	237.1
East Portland													
Argay	1	2	15	18	46	309	79	0	470	356	618	1,444	244.5
Centennial	0	5	44	106	194	1,089	218	13	1,669	1,253	2,414	5,336	260.1
Glenfair	0	8	2	15	44	78	34	1	182	155	352	689	285.4
Hazelwood	0	16	53	102	195	1,705	346	14	2,431	1,563	3,081	7,075	394.9
Lents	1	8	43	97	229	1,050	266	24	1,718	1,450	3,190	6,358	373.4

Reported Offenses per Neighborhood, cont.

13

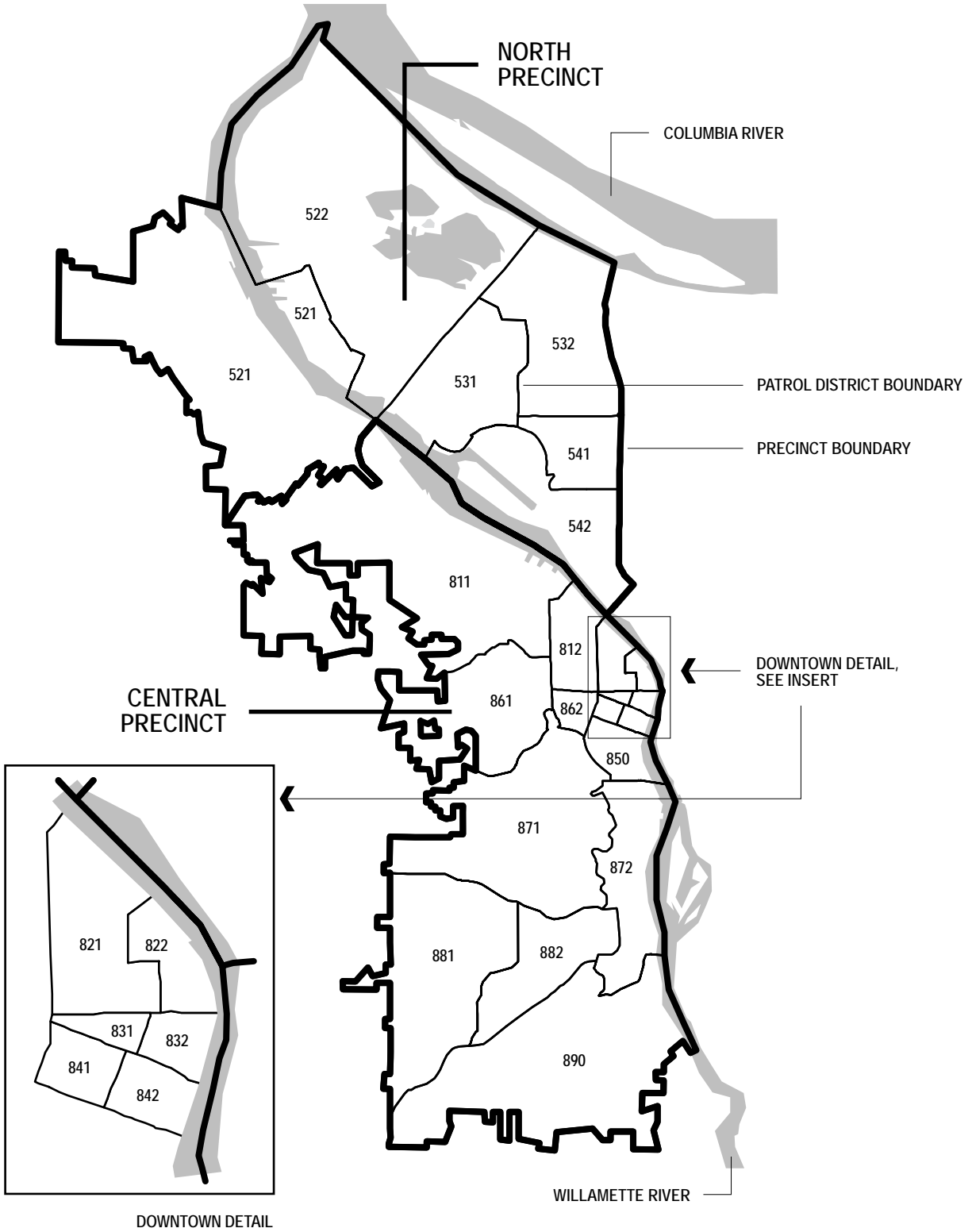
	Murder	Rape	Robbery	Aggravated Assault	Burglary	Larceny	Motor Vehicle Theft	Arson	Total Part I	Total Part II	Total Part III	Grand Total	Rate\1,000 Population
Mill Park	0	3	8	32	77	276	79	9	484	501	1,105	2,090	346.1
Parkrose	0	6	16	49	80	366	120	5	642	555	1,073	2,270	413.9
Parkrose Heights	0	1	10	13	40	127	53	1	245	267	542	1,054	191.6
Pleasant Valley	1	1	3	14	47	134	38	4	242	136	381	759	176.4
Powellhurst-Gilbert	0	17	47	118	240	700	202	14	1,338	1,233	2,953	5,524	349.1
Russell	0	1	3	17	32	103	15	0	171	164	265	600	162.6
Wilkes	0	3	1	16	76	190	36	1	323	218	491	1,032	157.9
Woodland Park	0	0	0	0	3	5	2	0	10	9	19	38	207.7
Total E Portland	3	71	245	597	1,303	6,132	1,488	86	9,925	7,860	16,484	34,269	307.8
Inner Southeast													
Ardenwald	0	0	1	0	7	19	4	0	31	18	48	97	145.9
Brooklyn	0	1	5	20	39	164	41	2	272	243	491	1,006	273.4
Buckman-East	0	4	8	26	80	311	75	12	516	377	753	1,646	241.7
Buckman-West	0	1	16	26	48	242	49	14	396	603	1,144	2,143	1,915.1
Center	0	2	8	23	46	232	59	1	371	248	653	1,272	283.0
Creston-Kenilworth	0	6	16	45	100	353	86	6	612	436	957	2,005	255.7
Eastmoreland	0	1	1	0	25	171	26	2	226	92	114	432	85.0
Hosford-Abernethy	0	1	3	19	79	367	76	5	550	409	858	1,817	257.0
Kerns	0	3	15	29	59	302	61	5	474	546	992	2,012	418.2
Laurelhurst	0	0	2	4	27	104	26	9	172	157	298	627	131.0
Mt Tabor	0	4	1	14	83	347	73	6	528	235	589	1,352	135.3
Reed	0	0	1	12	37	130	47	0	227	113	219	559	180.1
Richmond	1	2	11	30	108	403	78	3	636	498	959	2,093	178.4
Sellwood-Moreland	0	3	7	24	92	336	78	4	544	441	797	1,782	162.5
Sunnyside	0	3	11	20	57	405	48	9	553	471	708	1,732	239.8
Woodstock	0	2	9	23	115	339	70	4	562	335	661	1,558	181.5
Total Inner SE	1	33	115	315	1,002	4,225	897	82	6,670	5,222	10,241	22,133	225.9
Outer Southeast													
Brentwood-Darlington	0	1	10	74	117	321	78	17	618	714	1,499	2,831	270.2
Foster-Powell	2	5	11	40	98	481	100	12	749	484	1,016	2,249	311.6
Montavilla	0	6	28	62	174	700	217	16	1,203	985	2,393	4,581	299.2
Mt Scott	1	6	13	34	96	359	73	11	593	495	1,219	2,307	319.0
South Tabor	0	2	17	28	81	318	66	4	516	301	655	1,472	233.7
Total Outer SE	3	20	79	238	566	2,179	534	60	3,679	2,979	6,782	13,440	288.8
Southwest													
Arnold Creek	0	1	0	2	1	22	0	0	26	39	56	121	39.6
Ash Creek	0	0	0	11	20	88	12	4	135	140	238	513	101.2
Bridlemile	0	0	1	3	18	65	7	1	95	91	171	357	62.8
Collins View	0	0	0	1	29	116	6	5	157	141	87	385	187.3
Corbett-Terw/Lair	0	1	2	11	89	243	48	1	395	227	478	1,100	244.3
Crestwood	0	1	0	0	4	10	0	0	15	27	43	85	70.6
Far Southwest	0	1	1	0	11	92	16	0	121	51	79	251	165.7
Hayhurst	0	2	0	5	9	91	13	3	123	108	174	405	77.4

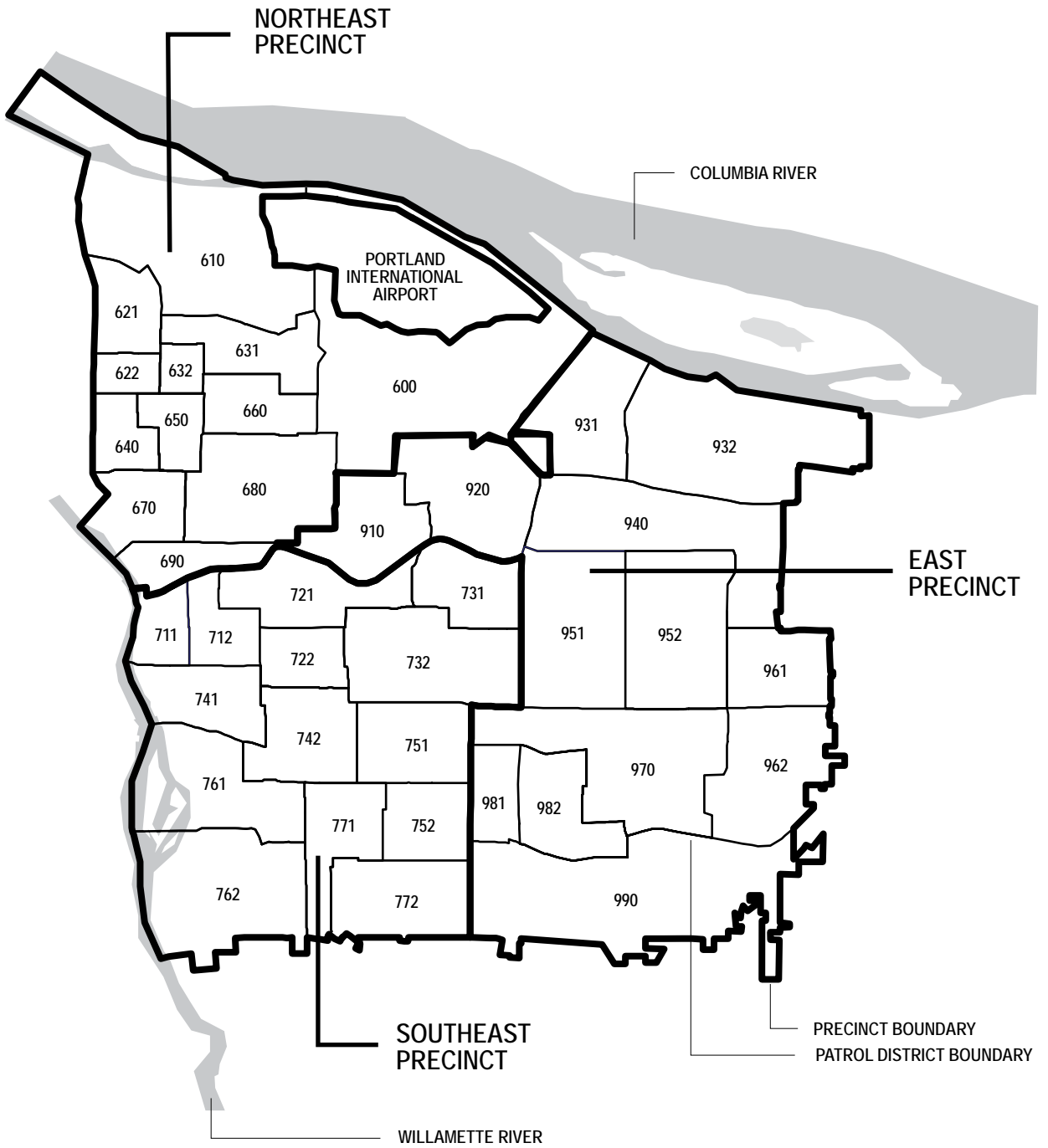
Reported Offenses per Neighborhood, cont.

14

	Murder	Rape	Robbery	Aggravated Assault	Burglary	Larceny	Motor Vehicle Theft	Arson	Total Part I	Total Part II	Total Part III	Grand Total	Rate\1,000 Population
Healy Heights	0	0	0	0	0	1	0	0	1	3	0	4	19.1
Hillsdale	0	2	5	6	40	244	33	7	337	289	508	1,134	136.3
Homestead	0	2	1	7	13	257	21	0	301	75	207	583	187.2
Maplewood	0	0	0	1	10	23	1	0	35	81	102	218	86.2
Markham	0	1	0	3	15	25	3	0	47	26	79	152	63.7
Marshall Park	0	1	0	0	3	10	2	0	16	10	20	46	32.1
Multnomah	0	3	2	13	51	221	39	0	329	292	614	1,235	177.1
South Burlingame	0	1	0	2	9	14	5	0	31	39	64	134	79.2
Southwest Hills	0	0	0	0	20	98	12	0	130	42	82	254	48.0
W Portland Park	0	2	2	12	25	69	15	1	126	94	222	442	127.6
Total Southwest	0	18	14	77	367	1,689	233	22	2,420	1,775	3,224	7,419	116.4
Northwest													
Arlington Heights	0	0	0	0	15	12	2	0	29	12	8	49	57.0
Forest Park	0	0	0	0	17	44	3	1	65	45	74	184	102.7
Goose Hollow	0	1	14	27	66	458	70	4	640	409	830	1,879	345.8
Hillside	0	0	0	1	7	23	3	0	34	16	23	73	58.5
Linnton	0	0	1	2	10	30	2	1	46	54	128	228	240.3
Northwest	0	8	34	38	135	993	227	17	1,452	1,290	1,569	4,311	353.4
NW Heights	0	0	0	0	4	13	1	0	18	14	14	46	48.3
NW Industrial	0	0	0	5	10	37	13	6	71	88	154	313	5,690.9
Pearl	1	3	19	25	36	417	53	12	566	663	943	2,172	2,784.6
Sylvan-Highlands	0	0	3	0	25	39	1	0	68	38	88	194	161.4
Total Northwest	1	12	71	98	325	2,066	375	41	2,989	2,629	3,831	9,449	371.0
Downtown													
Downtown	3	22	127	195	175	2,613	176	43	3,354	4,108	7,391	14,853	1,616.0
Old Town/ Chinatown	0	6	34	60	23	268	31	4	426	1,635	1,872	3,933	2,758.1
Total Downtown	3	28	161	255	198	2,881	207	47	3,780	5,743	9,263	18,786	1,769.4
Unknown/ No Neighborhood	0	50	33	105	77	762	144	13	1,184	1,637	6,996	9,817	

Note: Rates are based on residential population data. Many factors can influence the Rate/1000 Population calculations and can affect meaningful comparisons among neighborhoods. For example, the large work force in the Lloyd, Downtown, Old Town/Chinatown, Pearl and Northwest Industrial neighborhoods can distort the crime rate for those areas.





Reported Offenses per Patrol District

17

	Murder	Rape	Robbery	Aggravated Assault	Burglary	Larceny	Motor Vehicle Theft	Arson	Total Part I	Total Part II	Total Part III	Grand Total
North Precinct												
521	0	1	6	23	36	120	22	2	210	322	665	1,197
522	2	9	30	99	133	512	94	9	888	1,214	2,242	4,344
531	1	10	13	61	112	379	95	12	683	948	1,691	3,322
532	0	6	19	41	57	231	84	10	448	745	1,682	2,875
541	0	6	22	43	106	475	62	8	722	611	1,155	2,488
542	0	5	11	30	88	190	42	3	369	413	801	1,583
North Totals	3	37	101	297	532	1,907	399	44	3,320	4,253	8,236	15,809
Northeast Precinct												
600	0	11	28	115	182	679	189	13	1,217	1,193	2,658	5,068
610	0	3	17	39	96	674	155	10	994	597	1,136	2,727
621	0	7	12	42	49	134	44	7	295	348	670	1,313
622	1	2	26	36	43	166	25	2	301	392	709	1,402
631	1	3	9	45	61	189	34	3	345	408	840	1,593
632	0	4	27	35	31	234	24	2	357	311	646	1,314
640	0	9	31	95	135	277	46	9	602	851	1,556	3,009
650	0	6	42	70	82	297	39	5	541	660	1,440	2,641
660	1	4	22	66	92	254	27	6	472	468	928	1,868
670	3	7	29	60	85	496	92	11	783	554	1,197	2,534
680	0	2	35	27	240	545	76	8	933	649	1,022	2,604
690	0	6	79	55	68	1,600	127	1	1,936	1,182	2,143	5,261
NE Totals	6	64	357	685	1,164	5,545	878	77	8,776	7,613	14,945	31,334
Southeast Precinct												
711	0	1	21	40	56	284	64	15	481	784	1,432	2,697
712	0	8	10	32	98	462	96	17	723	546	1,088	2,357
721	0	3	18	38	112	478	116	11	776	619	1,366	2,761
722	0	3	17	25	83	460	51	8	647	583	819	2,049
731	0	3	18	36	95	447	124	6	729	553	1,370	2,652
732	0	7	11	41	163	613	168	16	1,019	691	1,645	3,355
741	0	1	3	19	89	408	85	5	610	446	923	1,979
742	1	6	16	59	142	575	124	8	931	705	1,545	3,181
751	1	3	29	65	170	594	144	13	1,019	619	1,447	3,085
752	2	10	17	45	128	603	115	14	934	699	1,559	3,192
761	0	1	7	36	102	405	104	4	659	457	928	2,044
762	0	4	8	20	98	415	92	4	641	450	742	1,833
771	0	2	9	23	115	339	70	4	562	334	660	1,556
772	0	1	10	74	120	323	78	17	623	720	1,505	2,848
SE Totals	4	53	194	553	1,571	6,406	1,431	142	10,354	8,206	17,029	35,589
Central Precinct												
811	0	1	0	9	56	227	67	10	370	435	453	1,258
812	0	7	34	34	86	754	165	12	1,092	957	1,246	3,295
821	1	4	32	40	40	457	52	12	638	1,368	1,609	3,615
822	0	4	15	37	14	171	25	2	268	704	948	1,920
831	0	6	29	38	14	227	22	2	338	638	852	1,828

Reported Offenses per Patrol District, cont.

18

	Murder	Rape	Robbery	Aggravated Assault	Burglary	Larceny	Motor Vehicle Theft	Arson	Total Part I	Total Part II	Total Part III	Grand Total
Central Precinct, cont.												
832	1	7	28	58	17	247	26	2	386	1,306	2,057	3,749
841	1	2	20	28	34	554	41	27	707	800	1,698	3,205
842	0	1	29	41	32	658	21	1	783	751	1,269	2,803
850	0	8	26	36	78	963	70	12	1,193	850	1,930	3,973
861	0	1	5	5	84	255	27	9	386	201	388	975
862	0	1	13	24	43	360	61	4	506	376	744	1,626
871	0	3	4	13	65	496	57	1	639	280	568	1,487
872	1	2	2	21	97	291	51	1	466	393	1,373	2,232
881	0	3	1	20	54	309	32	7	426	421	668	1,515
882	0	4	5	16	73	315	57	7	477	462	923	1,862
890	0	6	3	19	95	355	45	6	529	401	610	1,540
Central Totals	4	60	246	439	882	6,639	819	115	9,204	10,343	17,336	36,883
East Precinct												
910	0	8	26	28	103	428	102	5	700	474	952	2,126
920	0	5	34	49	89	421	93	2	693	739	1,393	2,825
931	0	6	16	49	80	366	120	5	642	555	1,073	2,270
932	1	4	15	26	80	392	93	0	611	455	827	1,893
940	0	11	16	61	165	435	129	3	820	729	1,500	3,049
951	0	12	46	66	149	1,477	280	10	2,040	1,306	2,493	5,839
952	0	7	17	78	136	599	169	14	1,020	852	1,903	3,775
961	0	2	15	49	81	372	102	9	630	488	1,022	2,140
962	0	1	13	43	81	354	73	1	566	520	974	2,060
970	0	19	61	124	258	975	221	16	1,674	1,386	3,193	6,253
981	0	0	32	38	51	515	123	12	771	636	1,309	2,716
982	0	1	3	21	76	192	62	4	359	303	730	1,392
990	2	9	12	60	157	522	128	12	902	784	2,216	3,902
East Totals	3	85	306	692	1,506	7,048	1,695	93	11,428	9,227	19,585	40,240
Unknown/ Not Portland District	0	44	23	50	10	354	32	3	516	874	4,075	5,465

Adult and Juvenile Arrests

	1998	1999	2000	2001	2002
Juvenile					
Part I	1,893	1,788	1,519	1,312	1,269
Part II	4,369	3,896	3,975	2,898	2,177
Part III	1,173	1,100	995	942	795
Total Juvenile	7,435	6,784	6,489	5,152	4,241
Adult					
Part I	6,886	6,200	6,362	6,204	7,181
Part II	19,789	20,546	21,403	18,324	16,769
Part III	7,332	7,596	7,168	6,815	7,200
Total Adult	34,007	34,342	34,933	31,343	31,150

Footnotes: See page 21, Adult and Juvenile Arrests

Arrests

19

	Adults Arrested	Juveniles Arrested	Total Arrests in 2002
Part I Crime Arrests			
Willful Criminal Homicide	58	5	63
Rape	55	2	57
Robbery	367	74	441
Aggravated Assaults	381	69	450
Burglary	463	78	541
Larceny	5,046	920	5,966
Motor Vehicle Theft	785	116	901
Arson	26	5	31
Total Part I Arrests	7,181	1,269	8,450
Part II Crime Arrests			
Simple Assaults	3,699	324	4,023
Forgery	693	9	702
Fraud	378	16	394
Stolen Property	33	5	38
Vandalism	634	195	829
Weapon Laws	432	39	471
Prostitution	361	8	369
Sex Crimes	132	11	143
Drug Laws			
Opium	0	0	0
Heroin	662	8	670
Morphine	2	0	2
Cocaine	1,657	73	1,730
Codeine	28	3	31
Hashish	8	2	10
Marijuana	866	142	1,008
Synthetic Drugs	18	1	19
Dangerous Drugs	1,051	27	1,078
Other Drug Laws	53	20	73
Drug Laws Total	4,345	276	4,621
Gambling	7	0	7
Family Offenses	24	0	24
Driving Under the Influence of Intoxicants	1,868	15	1,883
Liquor Laws	2,044	241	2,285
Disorderly Conduct	1,061	92	1,153
Kidnapping	3	0	3
Curfew	5	336	341
Runaway	4	486	490
All Others	1,046	124	1,170
Total Part II Arrests	16,769	2,177	18,946
Part III Crime Arrests			
Miscellaneous Traffic	2,238	42	2,280
Protective Custody	2	504	506
Other Custody	7	0	7
Warrants	31	1	32
Fugitives	4,922	248	5,170
Total Part III Arrests	7,200	795	7,995
Grand Total	31,150	4,241	35,391

Footnotes: See page 21, Arrests

Aggravated Assault: An attack by one person upon another for the purpose of inflicting severe injury. This type of assault usually is accompanied by the use of a weapon or by means likely to produce death or injury.

All Other Offenses: Except Traffic - Includes trespass, blackmail, bomb threat, animal ordinances, and littering.

Arrest: The actual number of persons arrested (both booked and taken into custody; and cited and released) for committing criminal acts.

Arson: Any willful burning or attempt to burn a building, motor vehicle, aircraft, or personal property of another.

Burglary: The unlawful entry of a structure (both residential and non-residential) with intent to commit a theft.

Crimes Against Persons: Criminal offenses where the victim is present and the act is violent, threatening or has the potential of being physically harmful.

Crimes Against Property: Offenses that involve taking something of value by theft or deception or the destruction of property.

Disorderly Conduct: In this classification are placed all offenses of committing a breach of the peace.

Drug Laws: Included are all violations of state and local laws, specifically those related to the unlawful possession, sale, use, growing, manufacturing, and making of illegal drugs.

Driving Under the Influence of Intoxicants (D.U.I.): Driving or operating any vehicle while under the influence of liquor or drugs.

Embezzlement: Misappropriation of money or property entrusted to one's care.

Extortion: The use of fear of death, injury, property loss, reputation, etc. to induce or compel another to deliver property or perform some act or omission.

Family Offenses: Included here are offenses such as abandonment, neglect of children, custodial interference and non-support. (Physical abuse would be reported as an assault).

Forgery also Forgery/Counterfeiting: Forgery and counterfeiting are treated as allied offenses. In this classification are placed all offenses dealing with the making, altering, or possessing, with intent to defraud, anything false in the semblance of that which is true.

Fraud: Fraudulent conversion and obtaining money or property by false pretenses.

Fugitives: This category covers arrests made for other agencies and may be for: Parole/Probation violation, AWOL (absence without leave) from a penal institution, etc.

Gambling: All offenses which relate to promoting, permitting, or engaging in gambling are included in this category.

Homicide: Includes willful murder and aggravated murder.

Kidnapping: The interference with another person's liberty without consent or legal authority.

Larceny: The unlawful taking of property from the possession of another; includes pickpocket, pursesnatch, shoplift, bike theft, and theft from motor vehicle (car prowler).

Liquor Laws: With the exception of Driving Under the Influence all liquor law violations, state or local, are placed in this classification.

Miscellaneous Traffic Crimes: Serious traffic offenses which are classified as a misdemeanor or felony as defined by the Oregon Motor Vehicle Code.

Motor Vehicle Theft: The theft or attempted theft of a motor vehicle; includes motorcycles.

Murder: The willful (non-negligent) killing of one human being by another.

Negligent Homicide: The killing of another person through gross negligence.

Offenses - Excludes motor vehicle traffic death.

Arrests - Includes persons arrested for motor vehicle traffic death.

Offense: The criminal act, the number of criminal acts.

Part I Crimes: A group of crimes which are reported and tracked nationally: murder, rape, robbery, aggravated assault, burglary, larceny, motor vehicle theft, and arson.

Part II Crimes: A group of crimes which are reported and tracked nationally: simple assault, forgery, fraud, stolen property, vandalism, weapon laws, prostitution, sex crimes, drug laws, gambling, family offenses, D.U.I., liquor laws, disorderly conduct, kidnapping, curfew, runaway, and other offenses (see All Other Offenses above).

Part III Crimes: A group of crimes which are reported and tracked within the State of Oregon: includes traffic, warrants, protective custody, fugitives, officer assaults, and property and vehicles recovered for other jurisdictions.

Protective Custody: The custody of persons for detoxification, mental holds, material witness, or protective custody.

Examples: transport of an intoxicated subject to the local detoxification center; taking a child into protective custody pending further investigation of the child's care and welfare.

Prostitution: Included in this classification are the sex offenses of a commercialized nature.

Pursesnatch: To snatch a purse from the physical control of another. (If force is directed or used against the victim the matter becomes a robbery).

Rape: The carnal knowledge of a female, forcibly and against her will.

Robbery: The taking or attempting to take anything of value from a person or persons by force or threat of force.

Runaway: When a juvenile has departed from some location within Multnomah County and the juvenile's parents or guardians have reported them as a runaway.

Sex Crimes: Covers offenses such as statutory rape, contributing to the sexual delinquency of a minor, non-forcible rape, incest, molest, indecent exposure, forcible and non-forcible sodomy, obscene phone calls. (Does not include forcible rape, or prostitution).

Simple Assault: Assaults which are limited to the use of physical force and result in little or no injury to the victim.

Stolen Property Offenses: Included in this classification are all offenses of buying, receiving and possessing stolen property, as well as all attempts to commit any of these offenses.

Vandalism: Consists of the willful destruction, or defacement of property.

Warrants: Includes service of warrants of arrest and related papers for Multnomah County, as well as all other jurisdictions within the United States.

Weapons Regulation Laws: Deals with weapon offenses which are regulatory in nature, such as: furnishing a deadly weapon to a minor; excon or alien in possession of a firearm.

Willful Murder and Non Negligent Manslaughter: The willful (non-negligent) killing of one human being by another.

Appendix A Source:

Oregon Law Enforcement Data System (LEDS); Portland Police Data System. These definitions are not intended to serve as legal definitions.

Organizational Chart Footnotes, Page 7:

1. Portland Police Bureau 2. Federal Bureau of Investigation 3. Regional Organized Crime and Narcotics Task Force 4. Driving Under the Influence of Intoxicants. 5. Drug Abuse Resistance Education/Gang Resistance Education and Training 6. Portland Police Association

Personnel Distribution, Page 8:

Asst. Chief = Assistant Chief, Cmdr. = Commander, Capt. = Captain, Lt. = Lieutenant, Sgt. = Sergeant, Det. = Detective, Crmlst. = Criminalist.

Detectives and Sergeants were previously reported under the same category, but are now separated.

Part I Crimes Footnotes, Page 9:

1. Data on "Dispatched Calls" are from BOEC (Bureau of Emergency Communication) Computer Aided Dispatch (CAD) System incident tapes and include all calls to 9-1-1 and non-emergency calls for which a patrol car was dispatched.

2. Population numbers are for July 1 of the given year and are from Portland State University, Center for Population Research and Census.

3. TRU calls are calls for service which are handled by the Telephone Report Unit, either by giving advice, taking a report, or mailing a report form for the complainant to complete and return. Excluded are calls that were initially screened by TRU officers for which a patrol car was subsequently dispatched.

4. Part I Crime data are from Oregon Law Enforcement Data System (LEDS). Included are actual offenses known to the police. Reported offenses that, upon investigation, are unfounded or baseless are not included. For definitions of crimes see Appendix A.

5. Murder includes willful criminal homicide, but not homicide through negligence.

6. During the year 2000, policy changes were made in the way that burglary, theft from auto, vandalism to vehicle, and stolen auto vehicle reports were handled which could impact the statistics.

Adult and Juvenile Arrests, Page 18

Source: Portland Police Data System (PPDS); Juvenile: age 17 and younger.

For Definitions: See Appendix A

Arrests, Page 19

Source: Portland Police Data System

For definitions: See Appendix A



Vera Katz, Mayor
Mark A. Kroeker, Chief of Police

This report was produced by the Planning and Support Division.

Portland Police Bureau
1111 S.W. 2nd Avenue
Portland, OR 97204
(503) 823-0283

<http://www.portlandpolicebureau.com>

Printed on recycled paper