

Revenue Division Evacuation Map

Coordinator:

- Take radio, vest, and flashlight
- Use Exit B, take roll call sheet, go to rally point and check people in.

Zone Monitors:

- Take radio, vest, and flashlight
- Walk zone and close doors
- Exit, meet at rally point and check in.

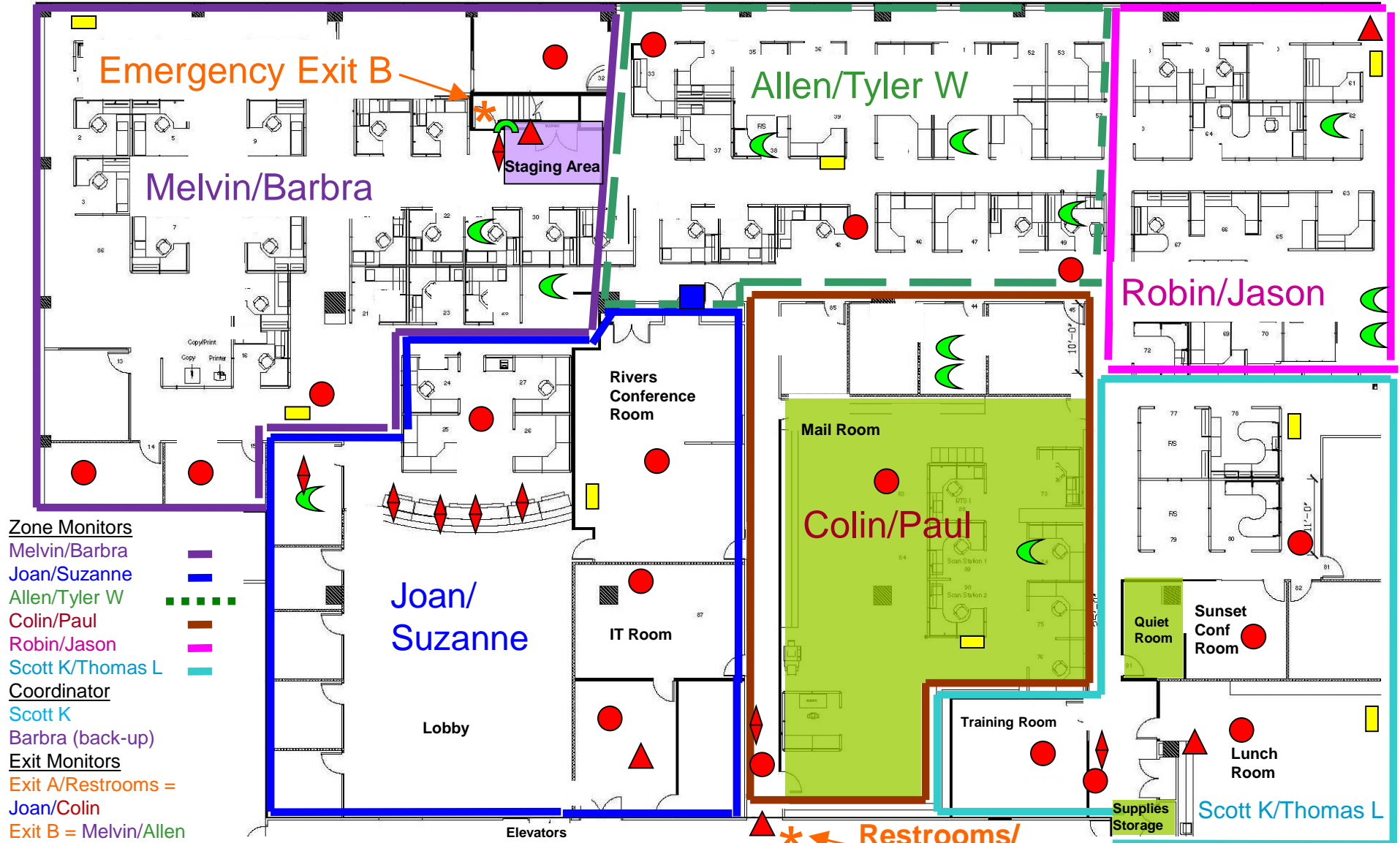
Exit Monitors:

- Take radio, vest, and flashlight.
- If Exit A, knock on restroom doors.
- Go to assigned exit and assist those who need help.
- Wait 90 seconds (since alarm), exit, meet @ rally point & check in.

- * = emergency exit (2)
- ▲ = fire extinguisher (4)
- = AED/defibrillator (1)
- = staging area (1)
- = emergency kit (8)
- = rope (1) (150ft)
- = red strobe light (18)
- = emergency radio (8)
- = protection room (3)

Radio: Press 'MODE' to turn on.

◆ = red strobe light switch (8)



- Zone Monitors**
- Melvin/Barbra
 - Joan/Suzanne
 - Allen/Tyler W
 - Colin/Paul
 - Robin/Jason
 - Scott K/Thomas L
- Coordinator**
- Scott K
 - Barbra (back-up)
- Exit Monitors**
- Exit A/Restrooms = Joan/Colin
 - Exit B = Melvin/Allen

Updated: 3/8/2017



In case of earthquake, drop, cover and hold.

Restrooms/ Emergency Exit A