



# CITY OF PORTLAND

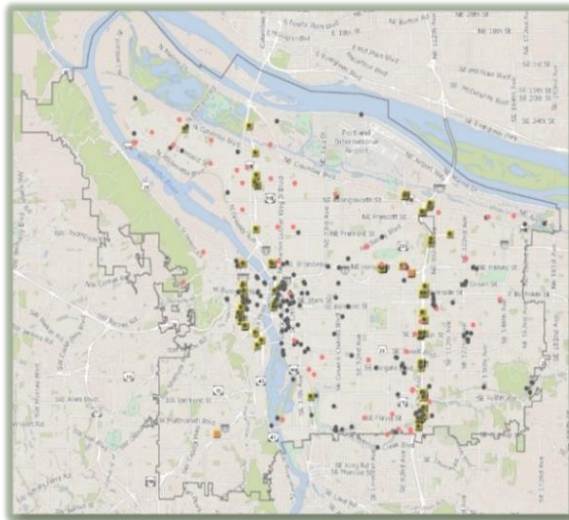
## WEEKLY CAMPSITE REPORT

July 23 – July 29, 2018

### This week we received:

560 new campsite reports identifying roughly 110 campsites throughout the City. Of these reports:

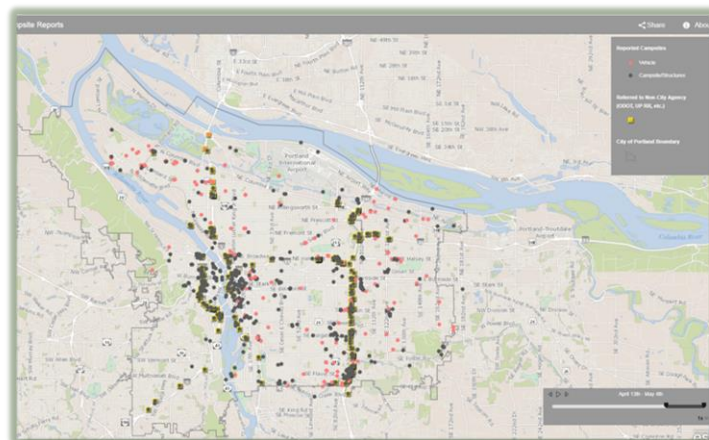
- 152 were reports of camping on Oregon Department of Transportation (ODOT) property/right-of-way
- 103 were reports of people living in vehicles
- 18 were reports of camping on private properties
- 2 were reports of camping on Union Pacific right-of-way



**CLICK ON THE MAP TO SEE  
ALL LOCATIONS REPORTED  
LAST WEEK**



**CLICK ON THE MAP TO  
SEE ALL LOCATIONS  
REPORTED IN THE LAST  
12 WEEKS**





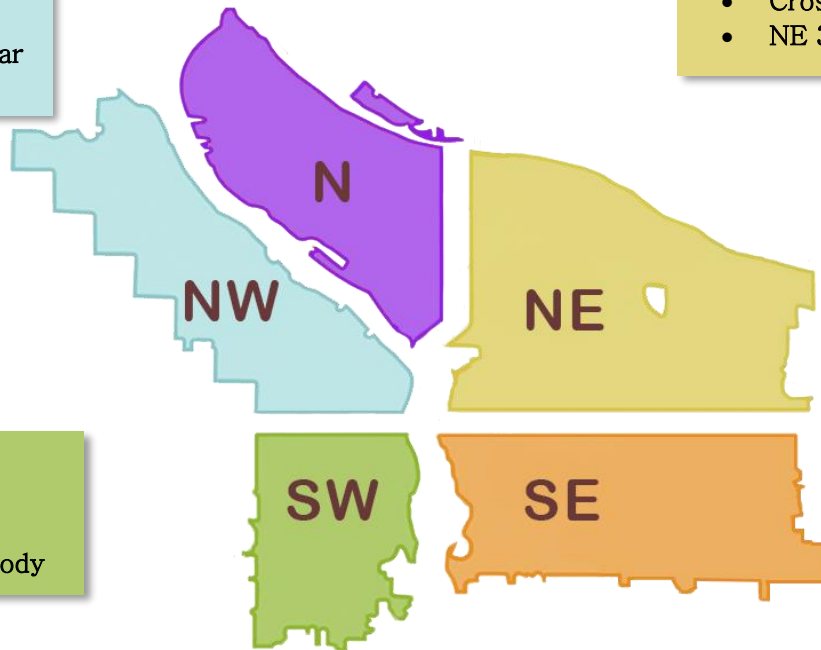
## Homelessness/Urban Camping Impact Reduction Update:

Last week we cleaned the following locations:

- NW 6th and Couch
- Union Station–NW Broadway between NW Irving/Glisan (maintenance) \*
- NW 17th and Raleigh (x2)
- NW Broadway and NW Naito
- NW Couch and NW 16th
- NW Lovejoy and NW Station Way
- Steel Bridge West Side–Near Day Storage

- Peninsula Trail

- NE 134th and Prescott CT.
- NE 33rd and Lombard
- NE 1st and NE Lloyd
- NE 68th and NE Broadway
- NE 112th and NE Fremont
- Cross Levee
- NE 33rd and Halsey



- SW Park and Market
- SW Park and Stark
- SW 6th and SW Pine
- SW Bancroft and SW Moody

- Greater St Francis Area—including SE 11th and SE Pine, SE 10th and SE Washington (maintenance) \*
- Eastbank Esplanade
- SE 10th and Washington
- SE Division Place and Grand (SE Ivon–maintenance) \*
- SE 1st and Oak
- SE 37th and SE Oak (Laurelhurst Park area)\*
- Brewer House on Lambert
- SE 9th and SE Mill
- SE 82nd and SE Rhine

- SE Holgate between 80th and 82nd
- SE 83rd and SE Holgate–Schiller
- SE 96th and Cora
- SE Powell and 79th
- SE 97th and Glisan–Burnside
- SE 124th and SE Powell near dead end
- SE 102nd and Cherry Blossom
- SE 24th and Schiller
- SE 21st and Powell
- SE 94th From Pardee to Schiller

**\*Please note, due to excessive heat, cleanup activities will be modified\***

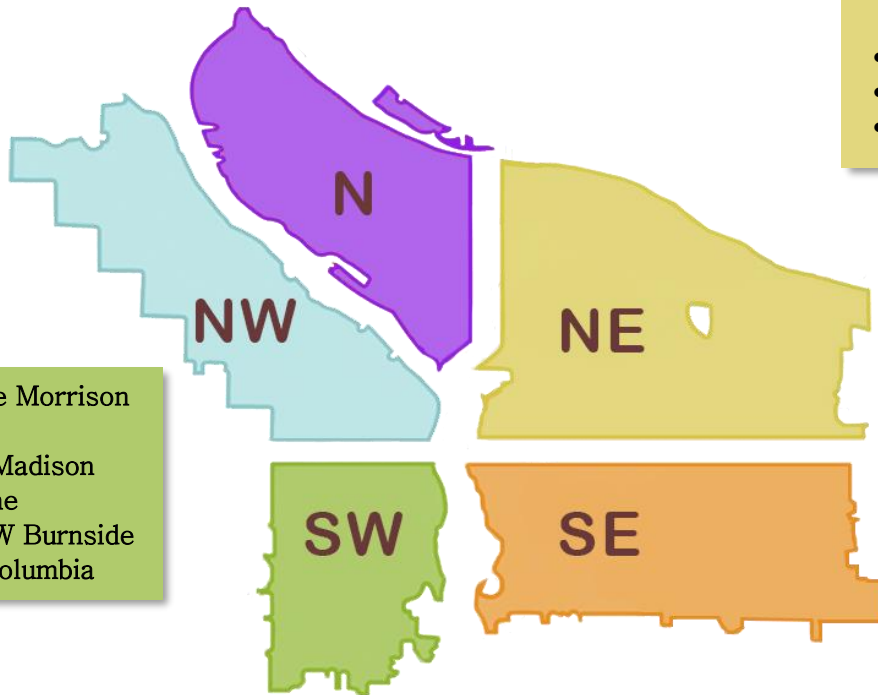


## This week we are cleaning the following locations:

- NW Broadway and NW Naito
- Steel Bridge West Side–Near Day Storage
- NW 6th and NW Couch
- Fields Park
- Union Station–NW Broadway between NW Irving/Glisan (maintenance) \*
- NW 6th and NW Davis

- N Midway and N Richards
- 7020 N. Oswego Ave.

- NE Everett and NE MLK (maintenance) \*
- NE 6th and Everett
- NE 8th and NE Hancock
- NE Grand and NE Schuyler
- NE 10th and Couch
- NE 78th and NE Schuyler
- Rose City Golf Course
- NE 13th and NE Lloyd
- NE 33rd and Lombard



- SW Naito under the Morrison Bridge
- SW Naito and SW Madison
- SW 6th and SW Pine
- SW Park/Oak and W Burnside
- SW 10th and SW Columbia

- SE Lincoln/Division Between SE Grand/MLK and SE 6th (PBOT and BES)
- Greater St Francis Area—including SE 11th and SE Pine, SE 10th and SE Washington (maintenance) \*
- Morrison Bridgehead Area–MLK and Morrison/Belmont (maintenance) \* include SE Alder from SE Water to SE 2nd
- Hawthorne Bridgehead Area–MLK and Madison/Hawthorne (maintenance) \*
- SE Division Place and Grand (SE Ivon–maintenance) \*
- SE 37th and SE Oak (Laurelhurst Park area)\*
- Eastbank Esplanade
- SE 12th and SE Alder
- SE 3rd and SE Ash
- SE 3rd and Main
- SE 8th and Alder
- SE 7th and Alder
- SE 9th and Alder
- SE 10th and Washington
- SE 92nd and Flavel under the bridge
- SE 92nd and SE Mt. Scott Blvd
- SE Flavel and I-205
- SE 92nd and Crystal Springs
- SE 25th–SE 29th and SE Clay
- SE 26th and SE Raymond
- SE Harney and 83rd
- SE Powell and 128th
- SE 22nd and Powell
- SE Tenino Loop–d-loop
- Powell Butte Floodplain
- SE 89th and Crystal Springs
- SE 147th and SE Foster (BES)
- SE 99th and SE Pine

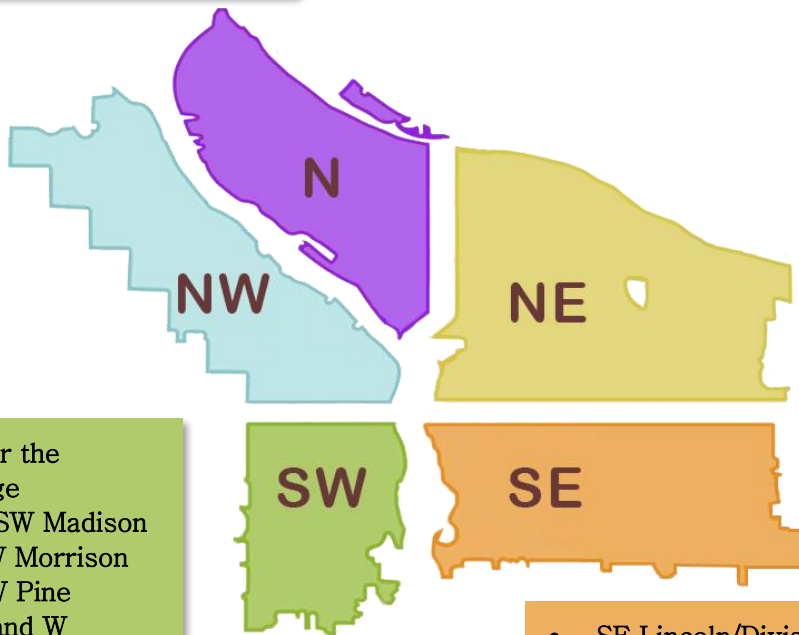


**Next week (beginning) 8/6/2018, the following locations are scheduled to be cleaned (locations to be posted by 8/3/2018\*):**

- Union Station (maintenance)-NW Broadway between NW Irving/Glisan\*
- NW Broadway and NW Naito
- Steel Bridge West Side-Near Day Storage

- N Williams and NE Weidler
- N Macrum and N Olympia
- N Vancouver and N Schmeer
- N Interstate and N Lombard

- NE 82<sup>nd</sup> and Jonesmore
- NE 94<sup>th</sup> and NE Halsey
- NE Everett and NE MLK (maintenance)\*
- NE 7<sup>th</sup> and Everett
- Colwood
- NE 42<sup>nd</sup> and Sandy
- NE 19<sup>th</sup> and NE Everett
- NE 116<sup>th</sup> and NE Multnomah
- NE 122<sup>nd</sup> and NE Holladay
- NE 128<sup>th</sup> and NE Glisan
- Johnson Lake
- NE 90<sup>th</sup> and NE Irving
- NE 112<sup>th</sup> and NE Weidler
- NE 39<sup>th</sup> and NE Halsey



- SW Naito under the Morrison Bridge
- SW Naito and SW Madison
- SW 1st and SW Morrison
- SW 6<sup>th</sup> and SW Pine
- SW Park/Oak and W Burnside
- Stephens Creek Natural Area
- SW Jefferson and SW Murray

- SE Lincoln/Division Between SE Grand and SE 6<sup>th</sup>
- Greater St Francis Area-including SE 11<sup>th</sup> and SE Pine, SE 10<sup>th</sup> and SE Washington (maintenance)\*
- Morrison Bridgehead Area-MLK and Morrison/Belmont (maintenance) \* include SE Alder from SE Water to SE 2<sup>nd</sup>
- Hawthorne Bridgehead Area-MLK and Madison/Hawthorne (maintenance)\*
- SE 39<sup>th</sup> and SE Main
- SE 88<sup>th</sup> and SE Lafayette
- SE 124<sup>th</sup> and SE Caruthers
- SE 148<sup>th</sup> and SE Division
- Greater Essex and Greater Holgate
- SE Lincoln/Division Between SE Grand/MLK and SE 6<sup>th</sup> (PBOT and BES)
- SE Division Place and Grand (SE Ivon-maintenance)\*
- SE 37<sup>th</sup> and SE Oak (Laurelhurst Park area)\*
- SE 82<sup>nd</sup> and SE Rhine/Powell
- SE 125<sup>th</sup> and SE Woodward
- SE Powell and SE 74<sup>th</sup>
- SE 124<sup>th</sup> and Division
- SE 80<sup>th</sup> and SE Rhine
- SE 102<sup>nd</sup> and SE Pine
- SE 123<sup>rd</sup> and Powell
- SE 109<sup>th</sup> and Clinton

**\*This list will be added to throughout the week\***

**We will continue to monitor the situation along the I-205 MUP and SwCT, adjusting as needed.**

*Finish projects that were started the previous week or are maintenance projects\**