



# CITY OF PORTLAND

## WEEKLY CAMPSITE REPORT

August 3 – August 9, 2020

### Last week, the Homelessness and Urban Camping Impact Reduction Program (HUCIRP):

- Conducted 0 campsite removals and 59 campsite cleanups.\*
  - \*Campsite removals indicate personal property has been removed and placed in storage. Cleanups mean no personal property was collected, only what was identified as garbage in addition to other biohazardous materials.
- Completed approximately 190 assessments—engaging with people living in camps, collecting garbage and biohazardous materials, and coordinating with service providers.

### This week we received:

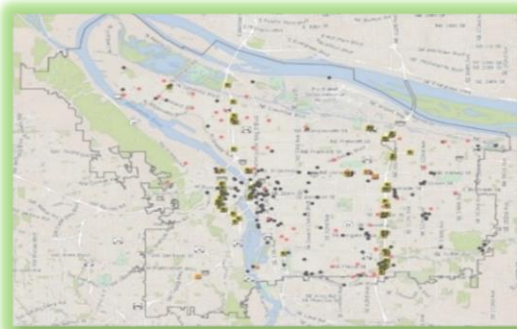
845 new campsite reports identifying 132 active campsites throughout the City.

### Of these reports:

- 172 were reports of people living in vehicles.

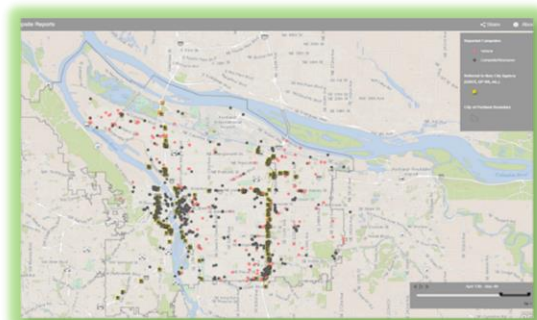
Due to COVID-19, HUCIRP has developed this protocol with regard to campsite cleanups:

<https://www.portlandoregon.gov/toolkit/article/756745>



**CLICK ON THE MAP ABOVE  
TO SEE ALL LOCATIONS  
REPORTED LAST WEEK**

**CLICK ON THE MAP BELOW TO  
SEE ALL LOCATIONS  
REPORTED IN THE LAST 12  
WEEKS**





# Homelessness/Urban Camping Impact Reduction Program Update:

## Last week we cleaned the following locations\*:

*\*locations listed in italics indicate trash/debris/biohazards removal only*

- *NW 22nd and Reed*
- *NW Kittridge and St. Helens*
- *NW 2nd and Davis*
- *West steel bridge*
- *NW Broadway and Glisan*
- *NW 16th and Pettygrove*
- *NW 16th and Raleigh*
- *NW 2nd and Glisan*
- *E side of NW 16th b/t Hoyt and Irving*

- *Victory Blvd and I-5 (x2)*
- *Interstate near Kaiser*
- *N Portsmouth and Columbia*
- *Interstate and Farragut*
- *Hazelnut Grove*
- *N Union Ct*

- *NE 68th and Halsey*
- *1425 NE Irving (ODOT)*
- *NE 82nd and Columbia/Killingsworth*
- *I-205 MUP Burnside-Glisan*
- *I-205 MUP Killingsworth-Alderwood*
- *9447 NE Colfax*
- *NE 118th and Couch*
- *NE Grand and Lloyd*
- *NE 115th and Marx*
- *Rocky Butte*
- *I-205 and Glisan overpass both sides*
- *NE 92nd and NE Halsey*
- *NE 72nd and Broadway Ct.*
- *NE 84th and Halsey*
- *NE 82nd and Killingsworth*



- *SW Naito and Harrison*
- *SW Park and Ankeny*
- *SW 13th and Main*

- *SE 92nd and SE Crystal Springs*
- *I-205 and Division NB on ramp*
- *I-205 and Powell*
- *SE 27th and Cora*
- *I-205 SE Stark-E Burnside*
- *SE Knapp St*
- *SWCT SE 92nd to SE Foster*
- *I-205 MUP Clatsop-Flavel*

- *Laurelhurst Park*
- *Kelly Butte*
- *SE 35th and Yamhill*
- *SE 26th and Raymond*
- *SWCT SE 136th to SE 175th*
- *SWCT 92nd-Foster*
- *I-205 and Foster*
- *I-205 and Division NB off ramp*
- *I-205 MUP Division-Market*
- *I-205 MUP Harold-Holgate*
- *SE 6th and Washington - Stark*
- *I-205 and Foster SB off ramp*
- *SE 8th and Pine*
- *I-205 MUP Powell-Division*
- *SE 10th and Pine*
- *SE 92nd and Flavel near Checkers Mart*
- *SE 21st and Powell*



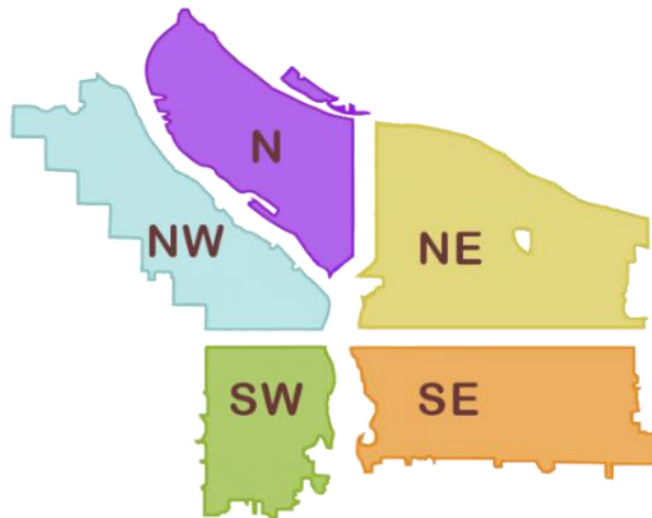
# This week we are cleaning the following locations:

- PCT North of Lombard
- N Schmeer Denver to Whitaker
- Columbia Slough Bridge and N Vancouver
- N Willamette and Maryland
- Denver and Schmeer hillside

- N Vancouver under I-5
- I-5 NB and Winchell
- I-5 SB Lombard to Winchell
- N Ainsworth and Minnesota
- N Fremont and Missouri
- N Failing Ped. Bridge East Side
- I-5 SB N Skidmore to Going
- Victory Blvd Both sides

- NE 33rd to 35th and Halsey
- NE 122nd and Oregon
- NE 122nd and Multnomah
- NE 82nd and Milton
- NE 112th and Marine Dr
- NE 60th and Cully
- NE 99th and NE Irving
- NE 103rd and Wasco
- NE 33rd Marine Dr to Elrod
- Big 4 Corners
- Big Four North
- NE 58th and Glisan
- NE 105th and Fremont
- I-205 MUP Gateway-Green
- I-84 Eastbound Near NE 8th and Glisan
- Rocky Butte Rd
- I-205 MUP Burnside-Glisan

- NW 2nd - 3rd and Glisan
- NW 2nd - 3rd Flanders to Everett
- NW 2nd Everett to Davis
- NW 3rd - 4th and Everett
- NW 2nd Davis to Couch
- NW 2nd and 3rd and Davis
- NW Glisan b/t Broadway and 6th
- NW Broadway and Glisan
- NW 5th and Flanders to Glisan
- Hwy 30 and NW Kittridge
- NW Broadway and Hoyt
- NW Broadway and Irving
- NW 5th from Irving to Hoyt
- NW 6th from Irving to Hoyt



- I-405 SB on ramp from Montgomery
- I-405 at 12th St
- I-5 and I-405 Split
- SW 64th and Coronado I-5 SB

- SE 82nd and SE Bush
- SE Pine SE 97th to SE 99th
- SE 82nd and Crystal Springs
- SE 99th and Pine
- SE 94th SE Raymond to SE Foster
- SE 94th and SE Caruthers
- SE Powell and 124th
- SE 122nd and Rhone

- SE Powell and 136th
- Oaks bottom hillside
- Foster Floodplain
- Colwood East side
- Zen Gardens
- Brookside Property
- I-205 MUP Holgate-Powell
- SE 54th and Powell
- SE 57th and Powell
- SE 92nd and SE Mt Scott
- SE 60-61st and Powell
- Laurelhurst Park
- SE 96th and SE Duke
- SE 88th and Powell

- SWCT SE Flavel-SE 92nd
- SWCT SE 92nd-SE Foster
- East of I-205 b/t Flavel and SwCT
- I-205 and Powell SB off ramp
- SE 16th and Powell
- SE 96th and SE Main
- I-205 MUP Harold-Holgate
- SE 92nd and SE Crystal Springs
- I-205 MUP Clatsop-Flavel