



# CITY OF PORTLAND

## WEEKLY CAMPSITE REPORT

August 24 – August 30, 2020

### Last week, the Homelessness and Urban Camping Impact Reduction Program (HUCIRP):

- Conducted 6 campsite removals and 54 campsite cleanups.\*
  - \*Campsite removals indicate personal property has been removed and placed in storage. Cleanups mean no personal property was collected, only what was identified as garbage in addition to other biohazardous materials.
- Completed approximately 292 assessments—engaging with people living in camps, collecting garbage and biohazardous materials, and coordinating with service providers.

### This week we received:

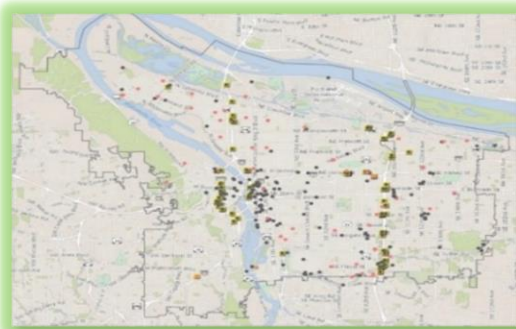
861 new campsite reports identifying 187 active campsites throughout the City.

### Of these reports:

- 204 were reports of people living in vehicles.

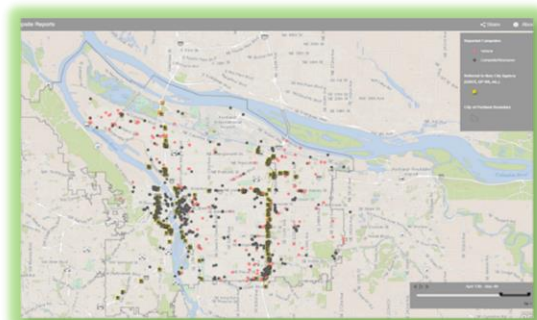
Due to COVID-19, HUCIRP has developed this protocol with regard to campsite cleanups:

<https://www.portlandoregon.gov/toolkit/article/756745>



**CLICK ON THE MAP ABOVE  
TO SEE ALL LOCATIONS  
REPORTED LAST WEEK**

**CLICK ON THE MAP BELOW TO  
SEE ALL LOCATIONS  
REPORTED IN THE LAST 12  
WEEKS**





# Homelessness/Urban Camping Impact Reduction Program Update:

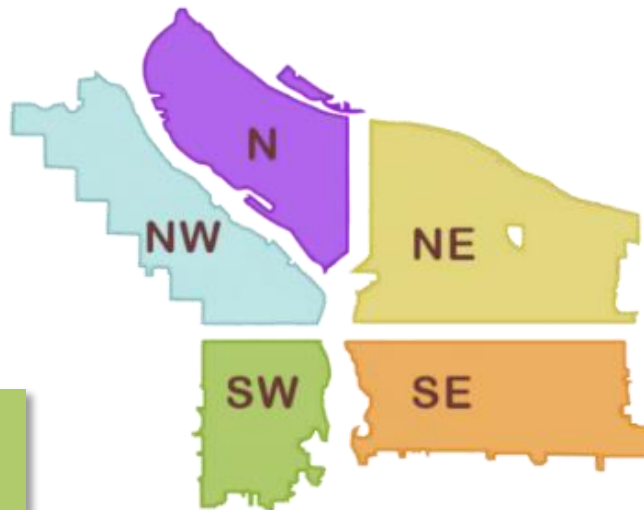
## Last week we cleaned the following locations\*:

*\*locations listed in italics indicate trash/debris/biohazards removal only*

- *NW 5th and 6th Glisan to Irving*
- *NW 16th and Pettygrove*
- *NW 5th to 6th Glisan to Irving*
- *NW 20th and Thurman*
- *NW Broadway and Glisan*
- *NW 2nd and Davis*
- *NW 16th and Raleigh*
- *NW 9th and 10th and Couch*
- *West Steel Bridge*

- *I-5 SB Lombard to Bryant*
- *N Schmeer Denver to Whitaker*
- *N Larrabee and Dixon*

- *NE 69th and Broadway*
- *I-205 MUP Gateway-Green*
- *NE Grand and Lloyd*
- *NE 17th and Argyle*
- *Rocky Butte Rd*
- *9909 NE Weidler*
- *NE 8th and Everett*
- *I-205 MUP Burnside-Glisan*



- *SW Naito and Harrison*
- *SW 13th and Main*
- *SW Park and Ankeny*
- *SW 11th and Columbia*

- *SE Powell 57th and 58th*
- *SE Powell and 74th -76<sup>th</sup>*
- *SE 88th and Powell*
- *SE Powell and 53rd to 55<sup>th</sup>*
- *SE 79th and Powell*
- *SE Powell 60th and 61st*
- *I-205 and Division NB off ramp*
- *I-205 MUP Division-Market*
- *I-205 and Foster NB On-ramp*
- *SE 96th and Market*
- *SWCT Foster-110th*
- *SWCT 110th-136th*
- *SWCT 136th-175th*
- *I-205 MUP Market and Stark*
- *I-205 near Lent elementary*
- *SWCT 82nd-Flavel*
- *SWCT 92nd-Foster*

- *Kelly Butte*
- *I-205 and Powell*
- *Laurelhurst*
- *SE 8th and Pine*
- *SE 6th between Washington and Stark*
- *I-205 MUP Clatsop-Flavel*
- *SE 92nd and SE Crystal springs*
- *92nd and Flavel under bridge (x2)*
- *I-205 MUP Harold-Holgate*
- *I-205 MUP from Market to Stark*
- *SE 92nd and Tenino*
- *SE 26th and Schiller*
- *Knapp St near Mt Scott*
- *SWCT Flavel-92nd*
- *East of I-205 near Flavel*
- *11207 SE Foster Rd*
- *SE 96th and Main*
- *SE 35th pl and Powell*



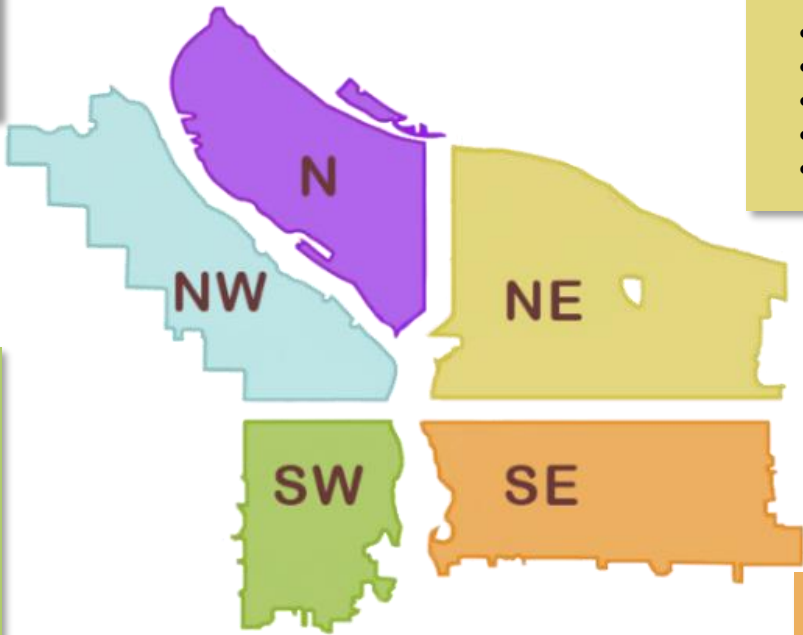
# This week we are cleaning the following locations:

- Columbia Slough Bridge and N Vancouver
- I-5 NB and Winchell
- I-5 NB Lombard to Bryant
- N Albina and Hunt
- I-5 and N Victory
- N Vancouver under I-5

- Denver and Schmeer hillside
- N Willamette and Maryland
- N Williams and Weidler
- N Larrabee and Hancock
- I-5 SB and Rosa parks
- I-5 NB Rosa Parks
- I-5 SB Failing to Kaiser
- N Fremont and Missouri

- NE 33rd to 35th and Halsey
- I-205 MUP Prescott-Killingsworth
- Rocky Butte
- I-205 MUP Killingsworth-Alderwood
- NE 105th and Fremont
- Big 4 Corners
- Colwood East side
- Big Four North
- I-84 Eastbound Near NE 8th and Glisan
- NE 33rd Marine Dr to Elrod
- NE 82nd and Columbia Loops
- NE Schuyler 78th to 81st
- NE MLK and I-84
- NE Grand and Lloyd

- NW St Helens and Kittridge
- NW 15th and W Burnside
- NW 5th and 6th From Glisan to Irving



- SW Barbur and Luradel
- SW 10th and Clifton
- SW 64th and Coronado I-5 SB
- I-405 SB on ramp from Montgomery
- I-405 and 12th St off ramp
- SW 13th and Market
- SW 26th and Barbur
- SW 19th and Multnomah
- SW 17th and Multnomah
- SW Barbur and Terwilliger
- SW 12th and Salmon
- SW College and Cardinal

- SE 16th and Powell
- SE 97th to SE 99th and Pine
- Laurelhurst
- SE 35th and Yamhill
- SE 11th and Alder
- SE 8th and Taylor
- Foster Floodplain
- Brookside
- Zen Gardens
- Brookside Property
- Oaks bottom hillside
- SE 10th and Washington
- SE 6th and Washington to Stark
- SE 8th and Pine
- SE 8th and Yamhill
- I-205 and Powell NB On-ramp
- SE 26th and Raymond