



# CITY OF PORTLAND

## WEEKLY CAMPSITE REPORT

October 5 – October 11, 2020

### Last week, the Homelessness and Urban Camping Impact Reduction Program (HUCIRP):

- Conducted 5 campsite removals and 60 campsite cleanups.\*
  - \*Campsite removals indicate personal property has been removed and placed in storage. Cleanups mean no personal property was collected, only what was identified as garbage in addition to other biohazardous materials.
- Completed approximately 113 assessments—engaging with people living in camps, collecting garbage and biohazardous materials, and coordinating with service providers.

### This week we received:

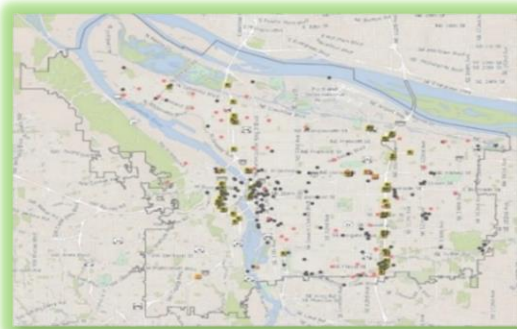
846 new campsite reports identifying 61 active campsites throughout the City.

### Of these reports:

- 262 were reports of people living in vehicles.

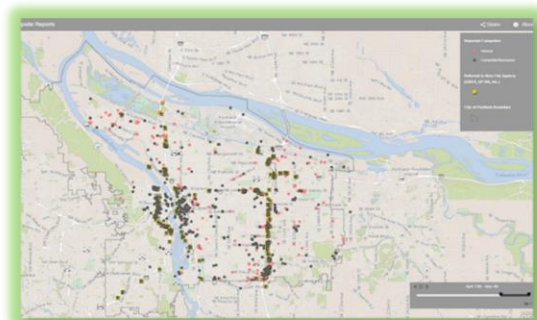
Due to COVID-19, HUCIRP has developed this protocol with regard to campsite cleanups:

<https://www.portlandoregon.gov/toolkit/article/756745>



**CLICK ON THE MAP ABOVE  
TO SEE ALL LOCATIONS  
REPORTED LAST WEEK**

**CLICK ON THE MAP BELOW TO  
SEE ALL LOCATIONS  
REPORTED IN THE LAST 12  
WEEKS**





# Homelessness/Urban Camping Impact Reduction Program Update:

## Last week we cleaned the following locations\*:

*\*locations listed in italics indicate trash/debris/biohazards removal only*

- *NW 15th and Everett*
- *NW 20th - 21st and Pettygrove*
- *NW 16th and Pettygrove*
- *NW 9th to 10th and Couch*
- *NW 2nd and Davis*
- *West steel bridge*
- *NW 19th and Hoyt*
- *NW 15th to 18th Thurman to Raleigh*

- *N Williams and Weidler*
- *N Richmond and Crawford*
- *N Richmond and Central*
- *N Russell and Commercial*
- *I-5 NB and Winchell*
- *I-5 SB Failing to Kaiser*
- *9045 N Ramsey Blvd*

- *6629 NE 66th*
- *Rocky Butte (x2)*
- *8256 NE Wasco*
- *1917 NE Marine Dr*
- *NE 35th and Halsey*
- *10536 NE Klickitat*
- *MLK and Killingsworth*
- *I-205 MUP Gateway to Gateway Green*



- *SW 2nd and Main*
- *100 SW Main*
- *West Morrison Bridge Head*
- *2336 SW Osage*

- *SWCT Flavel-92nd*
- *SE Water and Madison*
- *SE Division and Grand*
- *SE 92nd and Crystal Springs*
- *SE Water and Hawthorne Blvd*
- *I-205 MUP Harold-Holgate*
- *I-205 MUP Burnside-Glisan*
- *East of I-205 near Flavel*
- *SE 79th and Powell*
- *I-205 at Powell (x2)*
- *SE 96th and Main*
- *I-205 MUP Division-Market*
- *SE Knapp*
- *I-205 MUP Clatsop-Flavel*
- *SE Water and Morrison*
- *SE Powell 60th-61st*
- *SE Sandy and Oak*
- *I-205 MUP Stark-Burnside*
- *I-205 MUP Foster-Harold*
- *I-205 MUP Holgate-Powell*
- *SE 92nd and SE Crystal Springs*
- *SWCT Foster-110th*
- *SE Deardorff -*
- *SE Powell 57th-58th*
- *SWCT 92nd-foster*
- *SE 81st and Crystal Springs*
- *SE Powell 53rd-55th*
- *SE 26th and Schiller*
- *Se 96th and Main*
- *I-205 MUP market-stark*
- *I-205 SB Foster off ramp*
- *I-205 and Division*
- *SE Flavel under I-205*
- *92nd and Tenino*
- *SE 28th and Powell*
- *SE Powell 74th-76th*



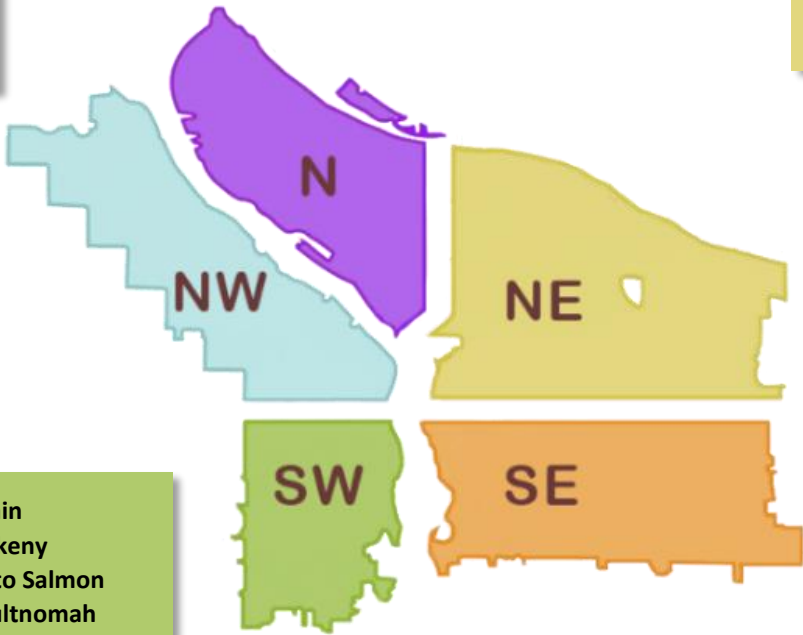
# This week we are cleaning the following locations:

- 319 N Schmeer
- N Albina and Hunt
- Columbia Slough Bridge and N Vancouver
- N Schmeer Whitaker to N. Vancouver
- I-5 and Victory
- Denver and Schmeer hillside

- N Commercial and Russell
- N Oswego and Lombard
- PCT and Lombard
- N Vancouver under I-5
- N Willamette and Maryland
- N Schmeer Denver To I-5
- Swan Island boat ramp
- 6237 N Cecelia

- NE MLK and I-84
- NE Grand and Lloyd
- Big 4 Corners
- Big Four North
- Colwood East side
- NE 105th and Fremont
- NE 33rd Marine Dr to Elrod
- NE 8th and Broadway
- I-84 Eastbound Near NE 8th and Glisan
- NE 122nd and Siskiyou
- NE 1st and Lloyd

- West Steel Bridge
- NW 5th to 6th Glisan to Irving
- NW Broadway and Glisan



- SW 13th and Main
- SW Park and Ankeny
- SW 13th Taylor to Salmon
- SW 17th and Multnomah
- SW 19th and Multnomah
- SW 26th and Barbur
- SW 64th and Coronado I-5 SB
- SW Barbur and Luradel
- SW Barbur and Terwilliger
- West end Ross Island
- SW 12th ave off ramp
- Washington Park

- SWCT Foster-110th
- SE 6th and Washington to Stark
- Kelly butte
- SE 8th and Pine
- SE Harold and 111th
- SE 136th and Powell
- Laurelhurst
- Brookside
- Brookside Property
- Hawthorne Bridge Head
- Alice Springs
- SE 82nd and Crystal Springs
- SE Center and 60th
- SE 9th and Yamhill
- Foster Floodplain
- SE 92nd and Flavel by Trimet Stop
- SE 92nd and Flavel by Checkers Mart
- SE 16th and Powell
- Zen Gardens
- Ally way btwn 64th - 65th N of Holgate
- Oaks bottom hillside
- SE 92nd and Crystal Springs
- SE 8th and Salmon
- SE 16th and Schiller
- I-205 MUP Harold-Holgate
- SE 97th to SE 99th and Pine