



CITY OF PORTLAND

WEEKLY CAMPSITE REPORT

October 12 – October 18, 2020

Last week, the Homelessness and Urban Camping Impact Reduction Program (HUCIRP):

- Conducted 2 campsite removals and 46 campsite cleanups.*
 - *Campsite removals indicate personal property has been removed and placed in storage. Cleanups mean no personal property was collected, only what was identified as garbage in addition to other biohazardous materials.
- Completed approximately 324 assessments—engaging with people living in camps, collecting garbage and biohazardous materials, and coordinating with service providers.

This week we received:

805 new campsite reports identifying 198 active campsites throughout the City.

Of these reports:

- 169 were reports of people living in vehicles.

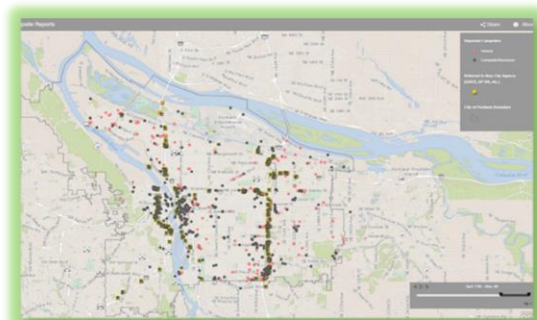
Due to COVID-19, HUCIRP has developed this protocol with regard to campsite cleanups:

<https://www.portlandoregon.gov/toolkit/article/756745>



**CLICK ON THE MAP ABOVE
TO SEE ALL LOCATIONS
REPORTED LAST WEEK**

**CLICK ON THE MAP BELOW TO
SEE ALL LOCATIONS
REPORTED IN THE LAST 12
WEEKS**





Homelessness/Urban Camping Impact Reduction Program Update:

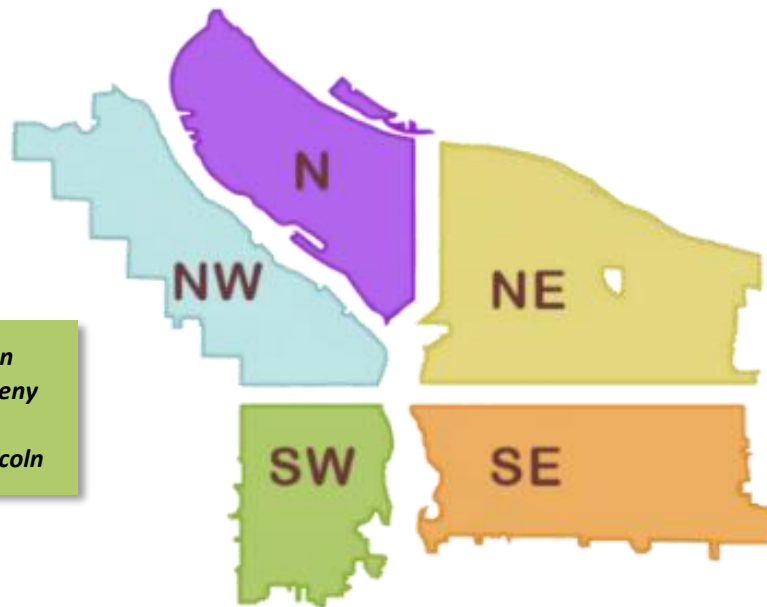
Last week we cleaned the following locations*:

**locations listed in italics indicate trash/debris/biohazards removal only*

- *NW Broadway and Glisan*
- *NW 5th to 6th Glisan to Irving*
- *NW 29th and Industrial*
- *NW 55th and St. Helens*
- *NW 21st and Thurman*
- *West Steel Bridge*
- *NW Glisan from 6th to Broadway*

- *10405 N Macrum*
- *N Schmeer Whitaker to N Vancouver*
- *Mocks Crest Park*
- *319 N Schmeer*
- *6237 N Cecelia*
- *N Borthwick and Cook*
- *N Ramsey and Lombard*

- *NE Grand and Lloyd*
- *NE 78th to 81st and Schuyler*
- *NE MLK and I-84*
- *I-205 and Burnside underpass*



- *SW 13th and Main*
- *SW Park and Ankeny*
- *SW 2nd and Pine*
- *SW Naito and Lincoln*

- *SE 6th and Washington to Stark*
- *SE 8th and Pine*
- *SE Powell 60th-61st*
- *I-205 MUP Division-Market*
- *I-205 MUP Harold-Holgate*
- *SE 136th and Powell*
- *534 SE 84th ave*
- *I-205 MUP Market-Stark*
- *Laurelhurst*
- *SE 10th and Pine*
- *5605 SE 111th*
- *7829 SE 92nd*
- *Clinton Community Garden*
- *I-205 and Foster Offramp*
- *I-205 and Powell NB off ramp*
- *I-205 MUP Holgate-Powell*
- *I-205 MUP Stark-Burnside*
- *SE 8th and Sherman*
- *SE 97th to SE 99th and Pine*
- *SE Knapp*
- *SWCT Foster-110th*
- *SE 92nd and Flavel by Trimet Stop*
- *SE 92nd and Flavel by Checkers Mart*
- *SE 60th and Center*
- *SE 92nd and Crystal Springs*
- *SE 16th and Schiller*



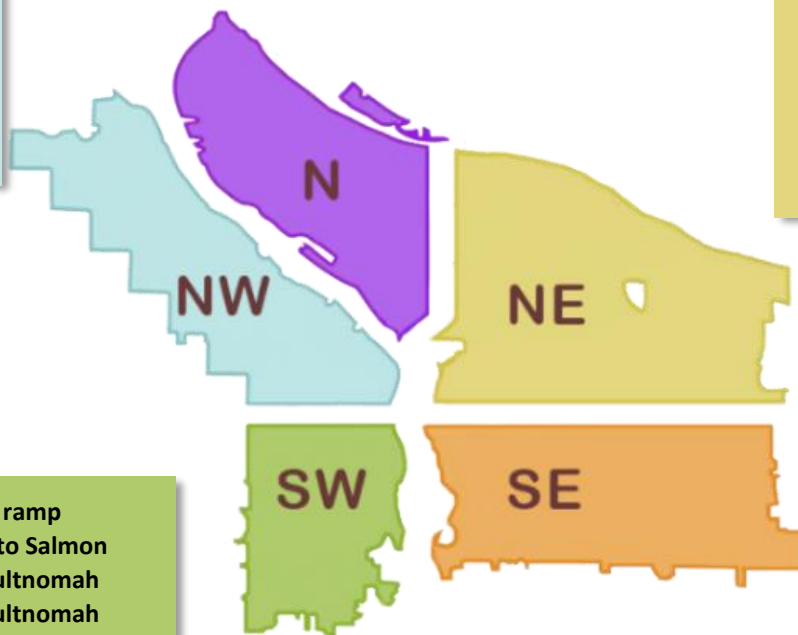
This week we are cleaning the following locations:

- N Albina and Hunt
- Columbia Slough Bridge and N Vancouver
- I-5 and Victory
- PCT and Lombard
- N Columbia and Congress
- Denver and Schmeer hillside
- N Commercial and Russell

- N Oswego and Lombard
- N Schmeer Denver To I-5
- N Vancouver under I-5
- N Willamette and Maryland
- I-5 NB and Skidmore
- I-5 SB and Ainsworth
- I-5 NB and Rosa Parks
- Pier 99
- Swan Island boat ramp

- I-205 MUP Burnside-Glisan
- NE 20th and Pacific
- Columbia Slough Trail and NE 138th
- NE 122nd and Siskiyou
- Big 4 Corners
- Big Four North
- Colwood East side
- I-84 Eastbound Near NE 8th and Glisan
- 5220 NE 152nd pl
- NE 105th and Fremont
- NE 1st and Lloyd
- NE 33rd Marine Dr to Elrod
- NE 8th and Broadway
- NE Grand and Lloyd

- NW Broadway from NW Hoyt to SW Oak
- NW Broadway and Glisan
- NW 5th to 6th Irving to Glisan
- NW 2nd and Davis
- West Steel Bridge



- SW 12th ave off ramp
- SW 13th Taylor to Salmon
- SW 17th and Multnomah
- SW 19th and Multnomah
- SW 26th and Barbur
- SW 64th and Coronado I-5 SB
- SW Barbur and Luradel
- SW Barbur and Terwilliger
- Washington Park
- West end Ross Island

- Kelly Butte
- SE Harold and 111th
- SE 92nd and Crystal Springs
- SE 27th-29th and Clay
- SE 96th and Main-Market
- I-205 and Division
- SE 96th and Main-Market
- Hawthorne Bridge Head
- SE 82nd and Crystal Springs
- Alice Springs
- Alley at 64/65th and Holgate
- Brookside
- Foster Floodplain
- SE 109th and Franklin
- SE 11th and Alder
- SE 16th and Powell
- SE 8th and Salmon
- SE 9th and Yamhill
- Zen Gardens
- SE 33rd and Waverleigh
- I-205 near Flavel
- SE Water and Madison
- Laurelhurst Park
- Knapp St
- I-205 and Foster
- SE 8th and Pine
- SE 6th and Washington to Stark
- Oaks Bottom Hillside