



# CITY OF PORTLAND

## WEEKLY CAMPSITE REPORT

November 2 - November 8, 2020

### Last week, the Homelessness and Urban Camping Impact Reduction Program (HUCIRP):

- Conducted 2 campsite removals and 33 campsite cleanups.\*
  - \*Campsite removals indicate personal property has been removed and placed in storage. Cleanups mean no personal property was collected, only what was identified as garbage in addition to other biohazardous materials.
- Completed approximately 267 assessments—engaging with people living in camps, collecting garbage and biohazardous materials, and coordinating with service providers.

### This week we received:

1539 new campsite reports identifying 180 active campsites throughout the City.

### Of these reports:

- 538 were reports of people living in vehicles.

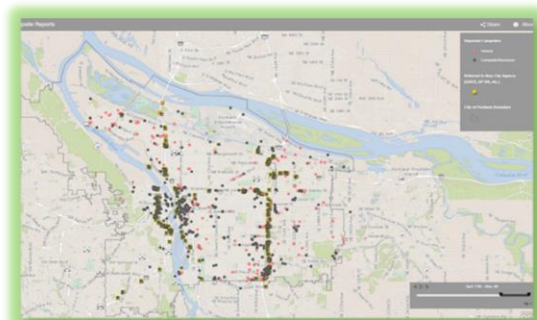
Due to COVID-19, HUCIRP has developed this protocol with regard to campsite cleanups:

<https://www.portlandoregon.gov/toolkit/article/756745>



**CLICK ON THE MAP ABOVE  
TO SEE ALL LOCATIONS  
REPORTED LAST WEEK**

**CLICK ON THE MAP BELOW TO  
SEE ALL LOCATIONS  
REPORTED IN THE LAST 12  
WEEKS**





# Homelessness/Urban Camping Impact Reduction Program Update:

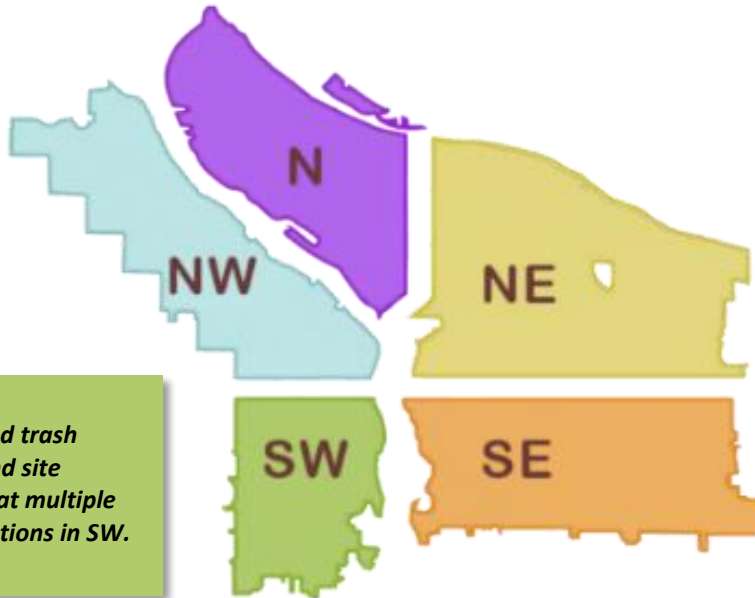
## Last week we cleaned the following locations\*:

*\*locations listed in italics indicate trash/debris/biohazards removal only*

- *Garling Property*
- *NW 5th to 6th Irving to Glisan*

- *I-5 NB and Lombard*
- *Schmeer Lift Pump Station*
- *8601 N Albina*
- *N Holman and Concord*
- *I-5 and S Harbor*
- *N Clark and Loring*

- *NE 8th and Broadway*
- *NE Wheeler and Multnomah*
- *I-205 MUP Burnside-Glisan*
- *Rocky Butte North*
- *NE 33rd-35th and Halsey*



- *City conducted trash mitigation and site assessments at multiple reported locations in SW.*

- *I-205 and Division NB off ramp*
- *Kelly Butte*
- *I-205 MUP Harold-Holgate*
- *SE 119th and Holgate*
- *I-205 NB near SE Steele*
- *SE 92nd and Crystal springs*
- *SE 86th Ct and Insley*
- *I-205 and Foster SB off ramp*
- *I-205 MUP Clatsop-Flavel*
- *17310 SE Naegeli Dr*
- *I-205 and Powell NB off ramp*
- *SE 74th-75th and Powell*
- *SE Powell and 54th-57th*
- *I-205 MUP Market-Stark*
- *I-205 SB near Powell on ramp*
- *I-205 and Division SB on ramp*
- *SWCT Flavel-92nd*
- *SE 99th and Woodstock*
- *SWCT 92nd-Foster*
- *SE Division and Grand*
- *SE Grand and Mill*
- *SE Knapp*



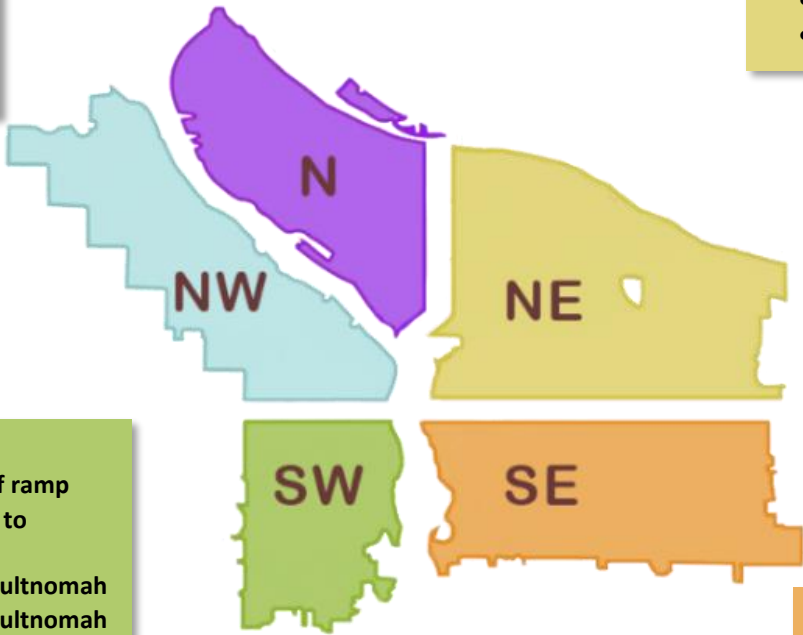
# This week we are cleaning the following locations:

- Columbia Slough Bridge and N Vancouver
- N Albina and Hunt
- I-5 NB and Rosa Parks
- I-5 and N Victory Blvd
- I-5 SB and Rosa Parks
- I-5 SB and Lombard
- 8005 N Richmond

- N Commercial and Russell
- N Schmeer Denver To I-5
- N Vancouver under I-5
- N Willamette and Maryland
- N Oswego and Lombard
- Denver and Schmeer hillside
- Pier 99
- Swan Island boat ramp
- I-5 SB and Ainsworth
- PCT and N Lombard

- Cross Levee
- Columbia Slough Trail near NE 138<sup>th</sup>
- I-205 MUP Gateway-Green
- I-84 Eastbound Near NE 8th and Glisan
- NE 105th and Fremont
- NE 1st and Lloyd
- NE 33rd Marine Dr to Elrod
- Big 4 Corners
- Colwood East side
- NE 60th and Prescott
- NE 102nd and Fargo

- NW 5th and 6th Irving to Burnside
- NW Broadway from NW Hoyt to SW Oak
- NW Broadway and Glisan



- Ankeny Dock
- SW 12th ave off ramp
- SW 13th Taylor to Salmon
- SW 17th and Multnomah
- SW 19th and Multnomah
- SW 26th and Barbur
- SW 64th and Coronado I-5 SB
- SW Barbur and Luradel
- SW Barbur and Terwilliger
- Washington Park
- West end Ross Island

- SE 111th and Harold
- SE 109th and Franklin
- Zen Garden
- Laurelhurst Park
- SE 96th and Market- Main
- SE 82nd and Crystal Springs
- SE 88th and Powell

- Brookside
- Brookside Property
- SE 92nd and Crystal Springs Blvd
- SE 33rd and Waverleigh
- I-205 MUP Powell-Division
- Hawthorne Bridge Head
- Alice Springs
- 64<sup>th</sup>/65<sup>th</sup> and Holgate
- SE 11th and Alder
- SE 16th and Powell
- SE 8th and Salmon
- SE 9th and Yamhill
- SE 92nd and tenino
- SWCT clatsop-flavel
- SWCT 92nd-Foster
- East of I-205 near Flavel
- I-205 MUP Holgate-Powell
- Zen Gardens
- Foster Floodplain
- Oaks Bottom Hillside