



# CITY OF PORTLAND

## WEEKLY CAMPSITE REPORT

November 9 - November 15, 2020

### Last week, the Homelessness and Urban Camping Impact Reduction Program (HUCIRP):

- Conducted 2 campsite removals and 42 campsite cleanups.\*
  - \*Campsite removals indicate personal property has been removed and placed in storage. Cleanups mean no personal property was collected, only what was identified as garbage in addition to other biohazardous materials.
- Completed approximately 290 assessments—engaging with people living in camps, collecting garbage and biohazardous materials, and coordinating with service providers.

### This week we received:

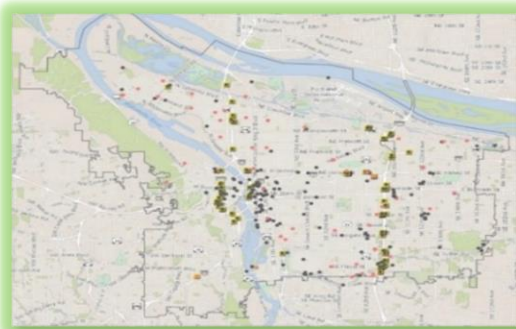
1555 new campsite reports identifying 199 active campsites throughout the City.

### Of these reports:

- 530 were reports of people living in vehicles.

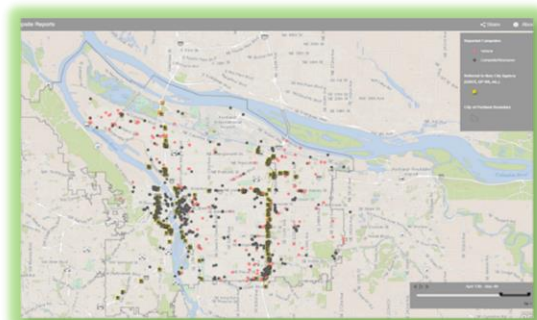
Due to COVID-19, HUCIRP has developed this protocol with regard to campsite cleanups:

<https://www.portlandoregon.gov/toolkit/article/756745>



**CLICK ON THE MAP ABOVE  
TO SEE ALL LOCATIONS  
REPORTED LAST WEEK**

**CLICK ON THE MAP BELOW TO  
SEE ALL LOCATIONS  
REPORTED IN THE LAST 12  
WEEKS**





# Homelessness/Urban Camping Impact Reduction Program Update:

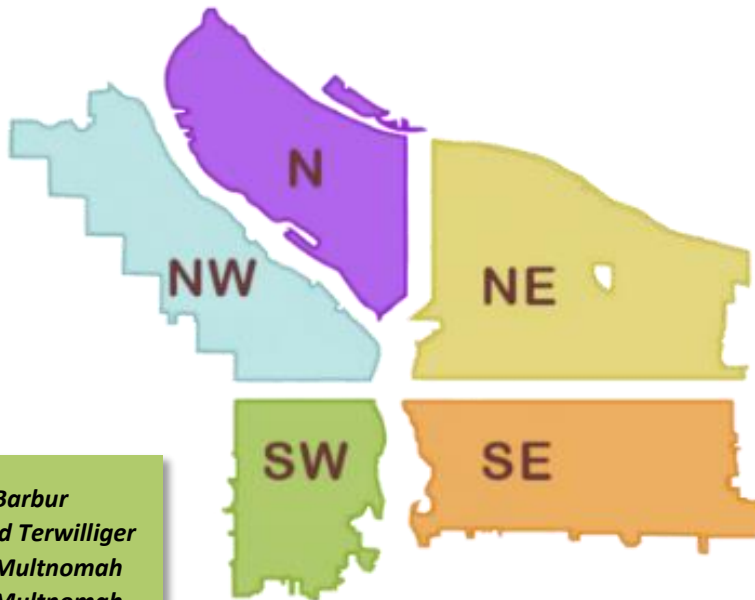
## Last week we cleaned the following locations\*:

*\*locations listed in italics indicate trash/debris/biohazards removal only*

- *N Fremont and Missouri*
- *8005 N Richmond*

- *NW 5th and 6th Irving to Burnside*
- *NW Broadway and Glisan*

- *NE 89th and Emerson*
- *I-205 MUP Gateway Green*
- *NE 6th and Everett*
- *5400 NE 109th Ave.*
- *I-205 MUP Burnside-Glisan*
- *NE 1st and Lloyd*
- *NE Grand and Lloyd*



- *SW 26th and Barbur*
- *SW Barbur and Terwilliger*
- *SW 17th and Multnomah*
- *SW 19th and Multnomah*
- *SW 13th Columbia to Main*
- *Ankeny Dock*

- *SE 8th and Pine*
- *Kelly Butte*
- *SE 113th and Harold*
- *Hawthorne Bridge Head*
- *CEID*
- *SE 3rd and Ash*
- *SE 6th and Pine*
- *SE 9th and Market*
- *SE Knapp*
- *I-205 MUP Division-Market*
- *I-205 and Powell NB Offramp*
- *SE 92nd and Crystal Springs Blvd*
- *I-205 MUP Powell-Division*
- *SE 11th and Alder*
- *SE 8th and Salmon*
- *SE 9th and Yamhill*
- *I-205 MUP Powell-Division*
- *SE Flavel ODOT*
- *SE 6th and Ash*
- *I-205 MUP Harold-Holgate*
- *SE Grand and Division Pl*
- *SWCT Foster-110th*
- *5504 SE Center*
- *SE 92nd and Tenino*
- *SWCT Clatsop-Flavel*
- *SWCT 92nd-Foster*
- *I-205 MUP Holgate-Powell*



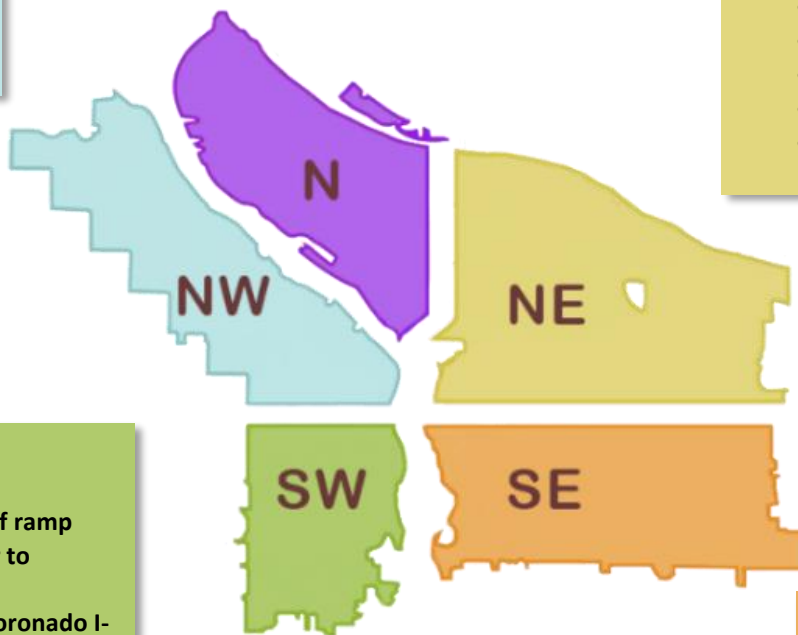
## This week we are cleaning the following locations:

- Columbia Slough Bridge and N Vancouver
- N Albina and Hunt
- N Oswego and Lombard
- Failing bridge
- I-5 and N Victory Blvd
- I-5 at Rosa Parks
- I-5 SB and Lombard

- N Commercial and Russell
- N Schmeer Denver To I-5
- N Vancouver under I-5
- N Willamette and Maryland
- Denver and Schmeer hillside
- Pier 99
- Swan Island boat ramp
- I-5 SB and Ainsworth
- PCT and N Lombard

- I-205 MUP Burnside-Glisan
- Big 4 Corners
- Colwood East side
- NE 60th and Prescott
- Cross Levee
- Columbia Slough Trail near NE 138th
- NE Emerson and 89th
- I-84 Eastbound Near NE 8th and Glisan
- NE 105th and Fremont
- NE 33rd Marine Dr to Elrod
- NE 102nd and Fargo
- Rocky Butte North
- NE 38th Pl and Sandy
- NE 33rd to 35th and Halsey

- NW 2nd to 3rd Everett to Glisan
- NW Broadway from NW Hoyt to SW Oak



- SW 13th and Montgomery
- SW 12th ave off ramp
- SW 13th Taylor to Salmon
- SW 64th and Coronado I-5 SB
- SW Barbur and Luradel
- Washington Park
- West end Ross Island

- SE 16th and Powell
- East Bank Esplanade
- SE 26th and Reedway
- SWCT Foster-110th
- SWCT 82nd-Flavel
- SWCT Flavel-92nd
- I-205 and Powell SB on ramp
- I-205 MUP Clatsop-Flavel
- I-205 MUP Market-Stark
- I-205 And Division NB off ramp

- SE 111th and Harold
- SE 109th and Franklin
- Zen Garden
- SE 96th and Market- Main
- SE 8th and 9th Clay - Market
- SE 82nd and Crystal Springs
- SE 88th and Powell
- SE 33rd and Waverleigh
- Brookside
- Foster Floodplain
- East of I-205 near Flavel
- SE Grand and Division Pl
- Alice Springs
- SE 64<sup>th</sup> and Holgate alley
- I-205 MUP Harold-Holgate
- Laurelhurst Park
- Zen Gardens
- Oaks Bottom Hillside