



CITY OF PORTLAND

WEEKLY CAMPSITE REPORT

November 23 - November 29, 2020

Last week, the Homelessness and Urban Camping Impact Reduction Program (HUCIRP):

- Conducted 0 campsite removals and 13 campsite cleanups.*
 - *Campsite removals indicate personal property has been removed and placed in storage. Cleanups mean no personal property was collected, only what was identified as garbage in addition to other biohazardous materials.
- Completed approximately 163 assessments—engaging with people living in camps, collecting garbage and biohazardous materials, and coordinating with service providers.

This week we received:

1214 new campsite reports identifying 278 active campsites throughout the City.

Of these reports:

- 424 were reports of people living in vehicles.

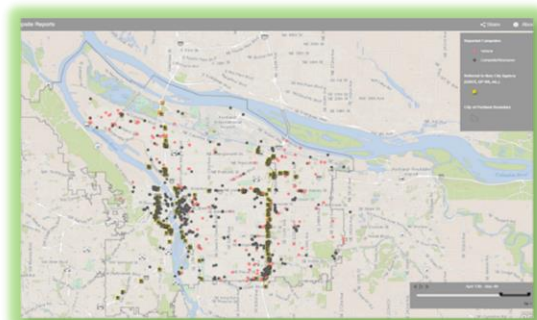
Due to COVID-19, HUCIRP has developed this protocol with regard to campsite cleanups:

<https://www.portlandoregon.gov/toolkit/article/756745>



**CLICK ON THE MAP ABOVE
TO SEE ALL LOCATIONS
REPORTED LAST WEEK**

**CLICK ON THE MAP BELOW TO
SEE ALL LOCATIONS
REPORTED IN THE LAST 12
WEEKS**





Homelessness/Urban Camping Impact Reduction Program Update:

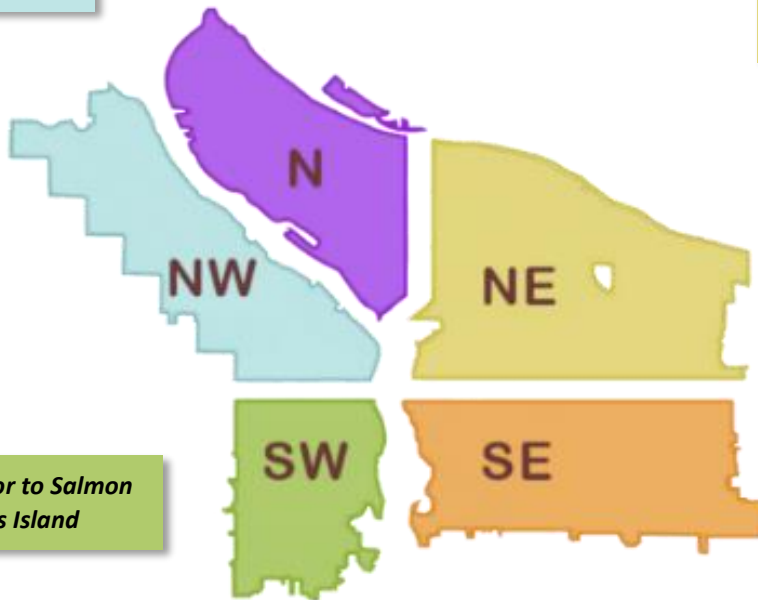
Last week we cleaned the following locations*:

**locations listed in italics indicate trash/debris/biohazards removal only*

- *City conducted trash mitigation and site assessments at multiple reported locations in Northwest Portland.*

- *City conducted trash mitigation and site assessments at multiple reported locations in North Portland.*

- *City conducted trash mitigation and site assessments at multiple reported locations in Northeast Portland.*



- *SW 13th Taylor to Salmon*
- *West end Ross Island*

- *SE 34th and Yamhill*
- *I-205 MUP Harold-Holgate*
- *SE 7th and Woodward St*
- *17300 SE Naegeli Dr.*
- *SWCT Foster-110th*
- *East Bank Esplanade*
- *I-205 MUP Clatsop-Flavel*
- *SE 9th and Washington*
- *10406 SE Long*
- *SE 11-12th and Pine*
- *SE 92nd and Tenino*

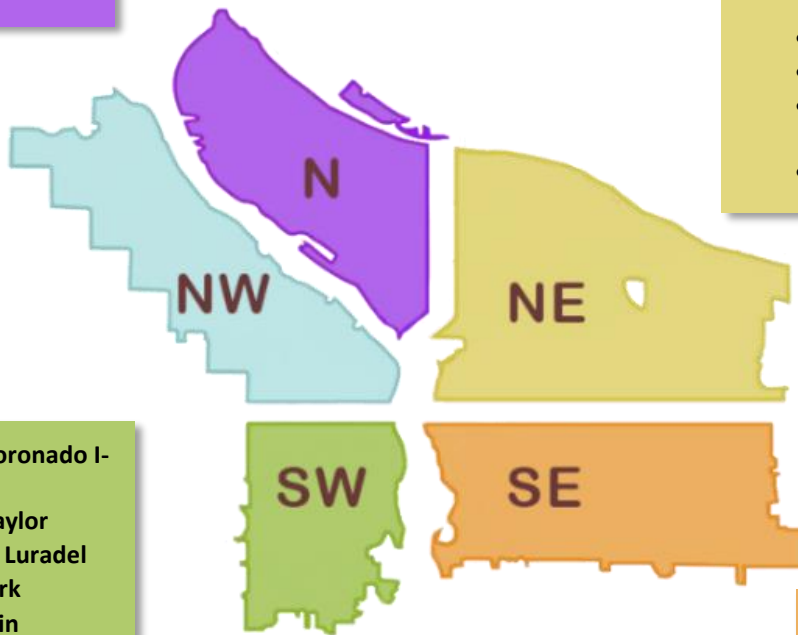


This week we are cleaning the following locations:

- Columbia Slough Bridge and N Vancouver
- N Albina and Hunt
- N Oswego and Lombard
- I-5 and N Victory Blvd
- I-5 at Rosa Parks
- I-5 SB and Lombard
- Failing bridge
- Denver and Schmeer hillside

- N Fremont and Missouri
- N Commercial and Russell
- N Schmeer Denver To I-5
- N Vancouver under I-5
- N Willamette and Maryland
- Pier 99
- I-5 SB and Ainsworth
- PCT and N Lombard
- 6269 N Fessenden
- Swan Island boat ramp

- I-205 MUP Burnside-Glisan
- NE 60th and Prescott
- Columbia Slough Trail near NE 138th
- 10420 NE Klickitat
- Cross Levee
- NE 38th Pl and Sandy
- Big 4 Corners
- Brookside
- Colwood
- I-84 Eastbound Near NE 8th and Glisan
- NE 105th and Fremont
- NE 33rd Marine Dr to Elrod
- I-205 MUP Killingsworth-Alderwood
- NE 102nd and Fargo



- SW 64th and Coronado I-5 SB
- SW 15th and Taylor
- SW Barbur and Luradel
- Washington Park
- SW 1st and Main

- SE 111th and Harold
- SE 109th and Franklin
- SE 82nd and Crystal Springs
- I-205 MUP Harold-Holgate
- Zen Garden
- Laurelhurst Park
- SE 88th and Powell
- East of I-205 near Flavel
- SE 79th and Powell
- Alice Springs

- SE 65th and Holgate
- Zen Gardens
- 9047 SE Foster
- I-205 MUP Holgate-Powell
- I-205 And Powell
- I-205 and Division
- I-205 MUP Market-Stark
- SWCT 82nd-Flavel
- SE 96th and Glenwood
- SE Powell 61st-65th
- Foster Floodplain
- Oaks Bottom Hillside
- SE 16th and Powell