



# CITY OF PORTLAND

## WEEKLY CAMPSITE REPORT

December 7 - December 13, 2020

### Last week, the Homelessness and Urban Camping Impact Reduction Program (HUCIRP):

- Conducted 4 campsite removals and 39 campsite cleanups.\*
  - \*Campsite removals indicate personal property has been removed and placed in storage. Cleanups mean no personal property was collected, only what was identified as garbage in addition to other biohazardous materials.
- Completed approximately 411 assessments—engaging with people living in camps, collecting garbage and biohazardous materials, and coordinating with service providers.

### This week we received:

915 new campsite reports identifying 268 active campsites throughout the City.

### Of these reports:

- 280 were reports of people living in vehicles.

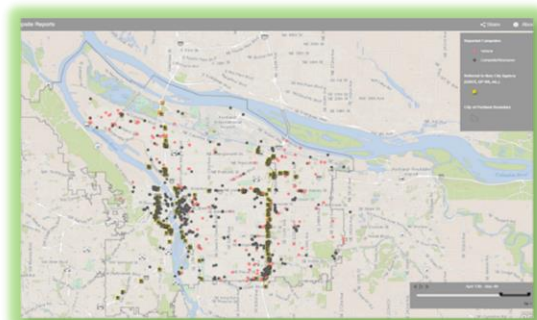
Due to COVID-19, HUCIRP has developed this protocol with regard to campsite cleanups:

<https://www.portlandoregon.gov/toolkit/article/756745>



**CLICK ON THE MAP ABOVE  
TO SEE ALL LOCATIONS  
REPORTED LAST WEEK**

**CLICK ON THE MAP BELOW TO  
SEE ALL LOCATIONS  
REPORTED IN THE LAST 12  
WEEKS**





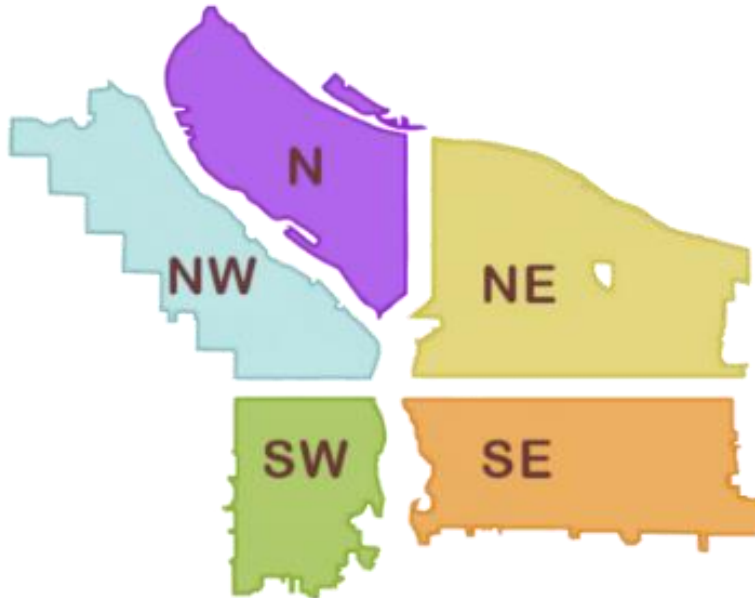
# Homelessness/Urban Camping Impact Reduction Program Update:

## Last week we cleaned the following locations\*:

*\*locations listed in italics indicate trash/debris/biohazards removal only*

- *NW 15th and Flanders*
- *NW 15th and Everett St*

- *N Kerby and Graham*
- *6269 N Fessenden*



- *City conducted trash mitigation and site assessments at multiple reported locations in SW.*

- *I-205 MUP Burnside-Glisan*
- *NE 1st and Multnomah St*
- *NE 78th and Thompson*
- *NE MLK and Everett*
- *NE 21st and Pacific*
- *NE 27th and Holladay*
- *NE 27th and Holladay St*
- *NE 38th Pl and Sandy*
- *Rocky Butte north*
- *I-205 MUP Killingsworth-Alderwood*
- *Rocky Butte south*
- *NE 57th and Hassalo*
- *NE 21st and Pacific*

- *SWCT Flavel-92nd*
- *Kelly Butte*
- *I-205 MUP Harold-Holgate*
- *I-205 and Division NB off ramp*
- *I-205 MUP Holgate-Powell*
- *SE 92nd and Tenino*
- *SE Division and Grand*
- *SE 35th and Yamhill*
- *I-205 MUP Market -Stark*
- *I-205 MUP Gateway-Green*
- *I-205 and Prescott over pass*
- *I-205 and Glisan SB off ramp*
- *SE 92nd and Pardee*
- *I-205 MUP Stark-Burnside*
- *Laurelhurst Park*
- *SE 88th and Powell*
- *I-205 MUP Powell-Division*
- *East of I-205 near Flavel*
- *I-205 and Foster*
- *I-205 MUP Clatsop-Flavel*
- *I-205 And Powell (x2)*
- *SWCT 82nd-Flavel*
- *SE 44th and Umatilla*
- *SE Knapp St (x2)*



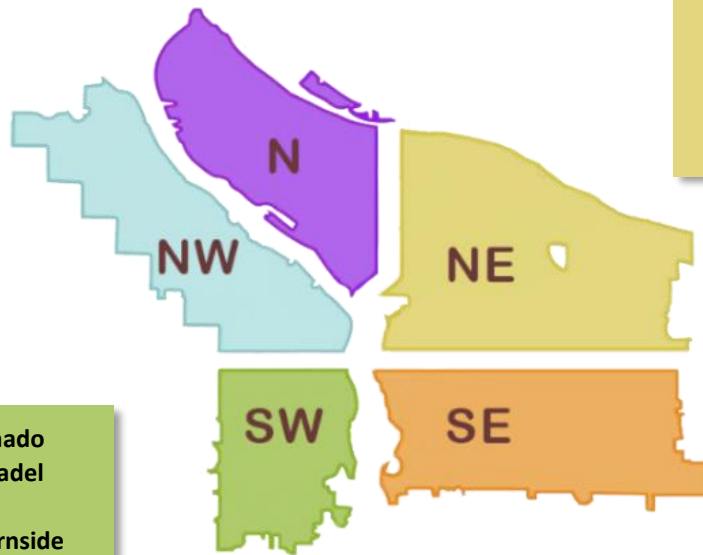
# This week we are cleaning the following locations:

- Columbia Slough Bridge and N Vancouver
- N Albina and Hunt
- N Oswego and Lombard
- N Richmond and Crawford
- Failing bridge
- I-5 and N Victory Blvd
- I-5 at Rosa Parks
- I-5 SB and Lombard

- N Commercial and Russell
- N Missouri and Fremont
- N Schmeer Denver To I-5
- N Vancouver under I-5
- N Willamette and Maryland
- N Denver and Schmeer hillside
- I-5 SB and Ainsworth
- PCT and N Lombard
- Pier 99
- Swan Island boat ramp
- N Hancock and Flint

- 10420 NE Klickitat
- Columbia Slough Trail near NE 138th
- Cross Levee
- NE 100th and Irving
- NE 102nd and Fargo
- NE 84th and Halsey
- NE Grand and Lloyd
- Colwood East side
- Big 4 Corners
- Brookside
- I-84 NE 82nd Offramp
- NE 105th and Fremont
- NE 12th and Lloyd
- NE 33rd Marine Dr to Elrod
- NE 39th and Halsey
- NE 6th and Everett
- I-205 MUP Burnside-Glisan
- Rocky Butte South

- NW Irving to Glisan from 4th to Broadway
- NW 6th and Flanders



- SW 64th and Coronado
- SW Barbur and Luradel
- Washington Park
- SW 14th and W Burnside
- SW 16th and Yamhill

- Foster Floodplain
- SE 109th and Franklin
- SE 111th and Harold
- SE 82nd and Crystal Springs
- I-205 MUP Stark-Burnside
- SE 99th and Pine
- Zen Garden
- SE 26th and Steele
- Alice Springs
- SE 64th - 65th at Holgate

- SE 4th and SE Division Pl
- SE 9th and Woodward
- I-205 MUP Clatsop-Flavel
- SE Knapp St
- I-205 and Powell
- I-205 MUP Holgate-Powell
- Eastbank Esplanade
- Hawthorne Bridge head
- SE 11th and Alder
- SE 9th and Sandy
- I-205 MUP Harold-Holgate
- I-205 MUP Division-Market
- I-205 MUP Market-Stark
- I-205 and Powell SB on ramp
- SE 33rd and Waverleigh
- SE 21st and Powell
- SWCT 82nd-Flavel
- SWCT Flavel-92nd
- Kelly Butte
- SE 51st and Lafayette