



CITY OF PORTLAND

WEEKLY CAMPSITE REPORT

December 21 - December 27, 2020

Last week, the Homelessness and Urban Camping Impact Reduction Program (HUCIRP):

- Conducted 4 campsite removals and 9 campsite cleanups.*
 - *Campsite removals indicate personal property has been removed and placed in storage. Cleanups mean no personal property was collected, only what was identified as garbage in addition to other biohazardous materials.
- Completed approximately 190 assessments—engaging with people living in camps, collecting garbage and biohazardous materials, and coordinating with service providers.

This week we received:

978 new campsite reports identifying 129 active campsites throughout the City.

Of these reports:

- 290 were reports of people living in vehicles.

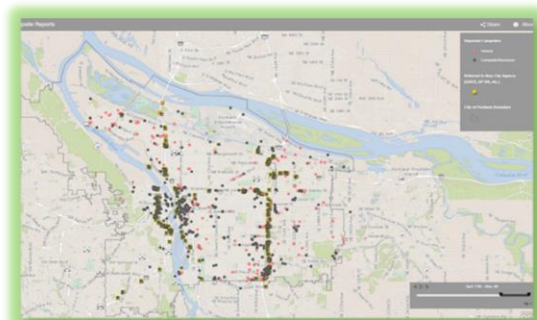
Due to COVID-19, HUCIRP has developed this protocol with regard to campsite cleanups:

<https://www.portlandoregon.gov/toolkit/article/756745>



**CLICK ON THE MAP ABOVE
TO SEE ALL LOCATIONS
REPORTED LAST WEEK**

**CLICK ON THE MAP BELOW TO
SEE ALL LOCATIONS
REPORTED IN THE LAST 12
WEEKS**





Homelessness/Urban Camping Impact Reduction Program Update:

Last week we cleaned the following locations*:

**locations listed in italics indicate trash/debris/biohazards removal only*

- *City conducted trash mitigation and site assessments at multiple reported locations in N Portland.*

- *NW 3rd and Davis*
- *NW 14th and Davis*

- *NE 6th and Everett*
- *NE Oregon and Lloyd*



- *SW 13th and Montgomery*
- *SW Harvey Milk and Naito*

- *SE 96th and Duke*
- *SE 80th - 81st and Pine*
- *SE Knapp*
- *I-205 MUP Harold-Holgate*
- *SE 103rd and Martins*
- *SE 80th and Rhine*
- *SE 37th and Stark*



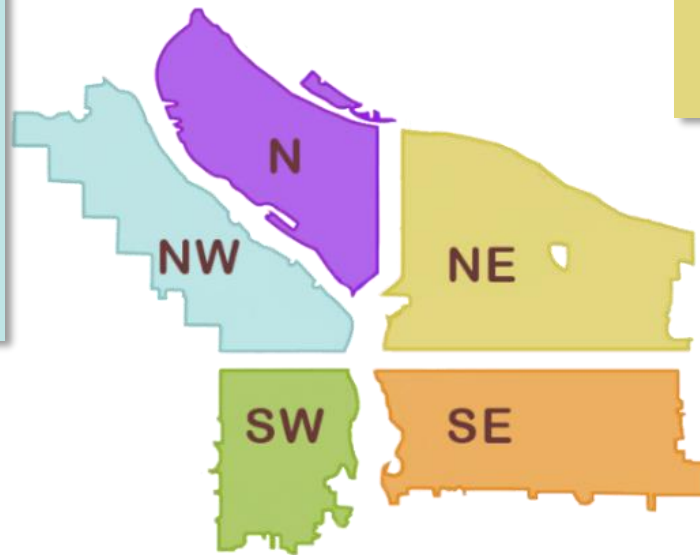
This week we are cleaning the following locations:

- Columbia Slough Bridge and N Vancouver
- N Albina and Hunt
- N Oswego and Lombard
- N Richmond and Crawford
- Marine Dr and Union Ct
- Failing bridge
- I-5 and N Victory Blvd
- I-5 at Rosa Parks
- I-5 SB and Lombard

- N Commercial and Russell
- N Missouri and Fremont
- N Schmeer Denver To I-5
- N Vancouver under I-5
- N Willamette and Maryland
- PCT and N Lombard
- Pier 99
- Swan Island boat ramp
- Denver and Schmeer hillside
- I-5 SB and Ainsworth
- N Hancock and Flint
- Behind 1825 N Williams

- 299 NE Middlefield
- NE 102nd and Fargo
- Cross Levee
- Columbia Slough Trail near NE 138th
- 10420 NE Klickitat
- Big 4 Corners
- Brookside
- Colwood East side
- I-84 NE 82nd Offramp
- NE 105th and Fremont
- NE 12th and Lloyd
- NE 33rd Marine Dr to Elrod
- NE 39th and Halsey
- Rocky Butte South
- NE 84th and Halsey
- NE 85th and Sandy

- NW Irving to Glisan from 4th to Broadway
- NW 2nd to 4th Hoyt to Flanders
- NW 6th to Broadway from Irving to Hoyt
- NW Broadway from Hoyt to Flanders
- NW 2nd to 4th Flanders to Everett
- NW 2nd and Couch



- SW 64th and Coronado
- SW Barbur and Luradel
- Washington Park
- SW 13th and Main
- S Corbett and Grover
- SW 2nd and Ash
- SW 13th and Market

- Alice Springs
- SE 64th and Holgate
- Zen Gardens
- I-205 at Powell
- SE 21st and Powell
- I-205 Stark-Burnside sound wall
- SE 97th-99th and Pine
- I-205 MUP Market-Stark

- SE 109th and Franklin
- SE 111th and Harold
- SE 82nd and Crystal Springs
- I-205 MUP Burnside-Glisan
- SE 60th and Powell
- Foster Floodplain
- SE 26th and Steele
- SE 9th and Sandy
- I-205 MUP Division-Market