



CITY OF PORTLAND

WEEKLY CAMPSITE REPORT

December 28 - January 3, 2021

Last week, the Homelessness and Urban Camping Impact Reduction Program (HUCIRP):

- Conducted 4 campsite removals and 8 campsite cleanups.*
 - *Campsite removals indicate personal property has been removed and placed in storage. Cleanups mean no personal property was collected, only what was identified as garbage in addition to other biohazardous materials.
- Completed approximately 183 assessments—engaging with people living in camps, collecting garbage and biohazardous materials, and coordinating with service providers.

This week we received:

1023 new campsite reports identifying 126 active campsites throughout the City.

Of these reports:

- 334 were reports of people living in vehicles.

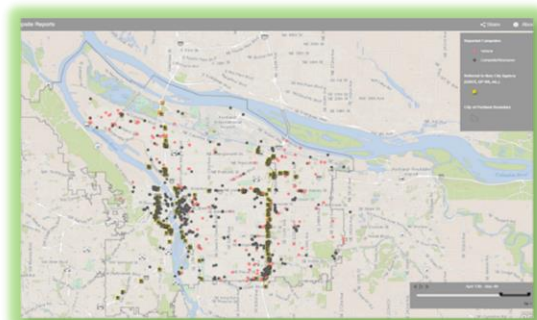
Due to COVID-19, HUCIRP has developed this protocol with regard to campsite cleanups:

<https://www.portlandoregon.gov/toolkit/article/756745>



**CLICK ON THE MAP ABOVE
TO SEE ALL LOCATIONS
REPORTED LAST WEEK**

**CLICK ON THE MAP BELOW TO
SEE ALL LOCATIONS
REPORTED IN THE LAST 12
WEEKS**





Homelessness/Urban Camping Impact Reduction Program Update:

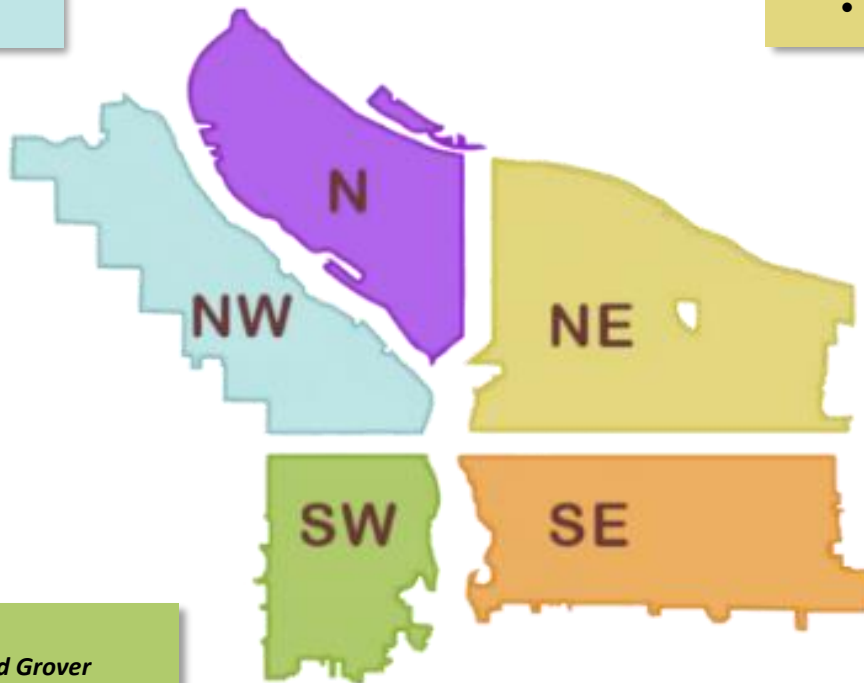
Last week we cleaned the following locations*:

**locations listed in italics indicate trash/debris/biohazards removal only*

- NW 2nd to 4th Flanders to Everett

- Marine Dr and Union Ct
- *Behind 1825 N Williams*
- *1208 N River St*

- *NE 122nd and Glisan*
- *NE 85th and Sandy*
- *NE 67th N of Glisan*



- *S Corbett and Grover*

- I-205 MUP Market-Stark
- *SE Knapp*
- *SE 19th and Division*
- *SE 10th and Woodward*



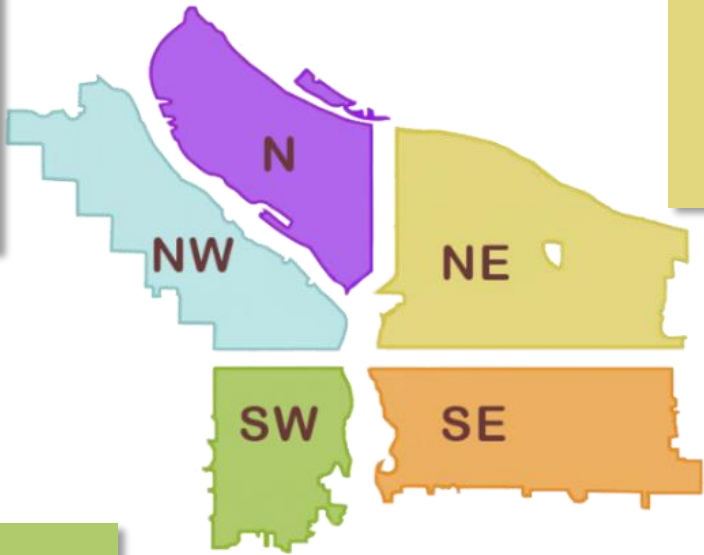
This week we are cleaning the following locations:

- I-5 and N Victory Blvd
- I-5 NB and Rosa Parks
- I-5 SB and Lombard
- I-5 SB and Rosa Parks
- Columbia Slough Bridge and N Vancouver
- N Albina and Hunt
- N Oswego and Lombard
- N Commercial and Russell

- N Hancock and Flint
- N Missouri and Fremont
- N Richmond and Crawford
- N Schmeer Denver To I-5
- N Vancouver under I-5
- N Willamette and Maryland
- Denver and Schmeer hillside
- Failing bridge
- I-5 SB and Ainsworth
- PCT and N Lombard
- Pier 99
- Swan Island boat ramp

- I-205 MUP Burnside-Glisan
- NE 102nd and Fargo
- 10420 NE Klickitat
- Columbia Slough Trail West of NE 138th
- Cross Levee-West
- 299 NE Middlefield
- Colwood East side
- Cross Levee-East
- Big 4 Corners
- I-84 NE 82nd Offramp
- Lower Rocky Butte
- NE 105th and Fremont
- NE 12th and Lloyd
- NE 33rd Marine Dr to Elrod
- NE 39th and Halsey
- Columbia Slough Trail-East of NE138th
- NE 84th and Halsey
- Rocky Butte South

- NW Irving to Glisan from 4th to Broadway
- NW 6th to Broadway from Irving to Hoyt
- NW 2nd to 4th Hoyt to Flanders
- NW Broadway from Hoyt to Flanders



- SW 13th and Main
- SW 2nd and Ash
- SW 64th and Coronado I-5 SB
- SW Barbur and Luradel
- Washington Park
- SW 13th and Market

- SE 21st and Powell
- SE 24th and Pardee
- SE 26th and Mitchell
- SE 26th and Schiller
- SE 97th-99th and pine
- SE 109th and Franklin
- SE 111th and Harold
- SE 82nd and Crystal Springs
- SE 26th and Reedway
- SE 26th and Steele
- SE 9th and Sandy

- I-205 MUP Division-Market
- SE 34th from Yamhill to Salmon
- SE 74th-75th and Powell
- Alice Springs
- SE 64th - 65th and Holgate
- Brookside
- Foster Floodplain
- I 205 MUP Harold-Holgate
- I-205 MUP Holgate-Powell
- I-205 South and Prescott
- I-205 Stark-Burnside
- Zen Gardens
- SE 87th and Clatsop
- SE Knapp