



# CITY OF PORTLAND

## WEEKLY CAMPSITE REPORT

January 11 – 17, 2021

### Last week, the Homelessness and Urban Camping Impact Reduction Program (HUCIRP):

- Conducted 3 campsite removals and 22 campsite cleanups.\*
  - \*Campsite removals indicate personal property has been removed and placed in storage. Cleanups mean no personal property was collected, only what was identified as garbage in addition to other biohazardous materials.
- Completed approximately 405 assessments—engaging with people living in camps, collecting garbage and biohazardous materials, and coordinating with service providers.

### This week we received:

1082 new campsite reports identifying 240 active campsites throughout the City.

### Of these reports:

- 393 were reports of people living in vehicles.

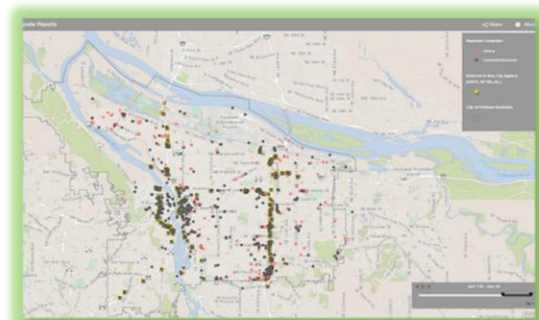
Due to COVID-19, HUCIRP has developed this protocol with regard to campsite cleanups:

<https://www.portlandoregon.gov/toolkit/article/756745>



**CLICK ON THE MAP ABOVE  
TO SEE ALL LOCATIONS  
REPORTED LAST WEEK**

**CLICK ON THE MAP BELOW TO  
SEE ALL LOCATIONS  
REPORTED IN THE LAST 12  
WEEKS**





# Homelessness/Urban Camping Impact Reduction Program Update:

## Last week we cleaned the following locations\*:

*\*locations listed in italics indicate trash/debris/biohazards removal only*





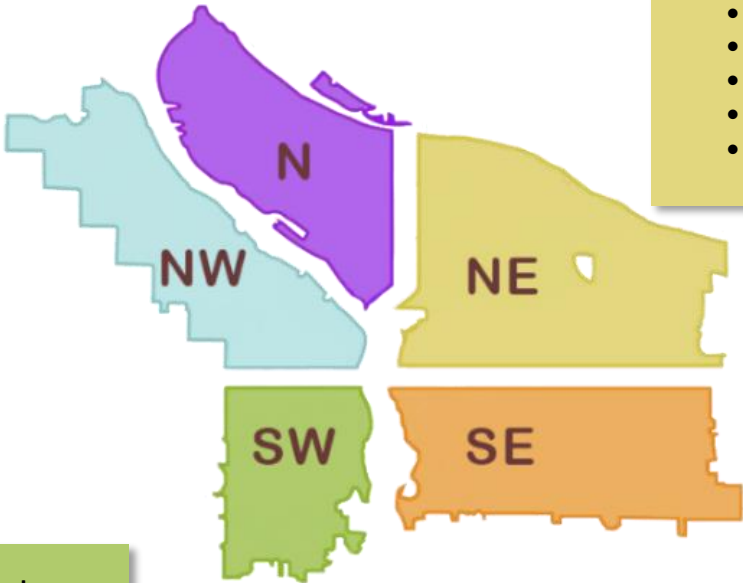
# This week we are cleaning the following locations:

- N Going Interstate to Greeley
- N Vancouver under I-5
- N Willamette and Maryland
- Denver and Schmeer hillside
- I-5 SB and Ainsworth
- N Missouri and Fremont

- N Richmond and Crawford
- N Schmeer Denver To I-5
- Swan Island boat ramp
- N Commercial and Russell
- N Hancock and Flint
- PCT and N Lombard
- Pier 99

- 10420 NE Klickitat
- Cross Levee
- Columbia Slough Trail near 138th
- NE 152nd pl and Airport way
- NE 91st and Hassalo
- NE 12th and Lloyd
- I-84 NE 82nd Offramp
- Big 4 Corners
- Colwood East side
- NE 105th and Fremont
- NE 33rd Marine Dr to Elrod
- NE 39th and Halsey
- NE 27th and Holladay
- NE 102nd and Weidler

- NW 2nd and Flanders
- NW 2nd and Couch
- NW 3rd and Flanders
- West Steel Bridge



- SW 12th and Market
- Duniway Park Track
- SW 13th and Main
- SW 13th and Market
- SW Naito and Lincoln
- SW 1st and Madison
- I-405 SB from 1st-4th
- SW 1st from Market-Main

- Brookside
- Alice Springs
- Foster Floodplain
- SWCT Flavel-92nd
- I-205 and Powell
- SE 103rd Pl and Martins
- I-205 MUP from Division - Powell
- SE 21st and Powell
- SE 64th and Holgate
- Zen Gardens
- SE 112th and Foster

- SE 34th-35th from Yamhill-Taylor (Sunnyside School)
- SE 24th and Schiller
- SE 79th and Powell
- SE 26th and Schiller
- SE 97th-99th and Pine
- SE 26th and Reedway
- SE 26th and Mitchell
- I-205 MUP Powell-Division
- SE 9th and Sandy