



CITY OF PORTLAND

WEEKLY CAMPSITE REPORT

January 25 – 31, 2021

Last week, the Homelessness and Urban Camping Impact Reduction Program (HUCIRP):

- Conducted 6 campsite removals and 16 campsite cleanups.*
 - *Campsite removals indicate personal property has been removed and placed in storage. Cleanups mean no personal property was collected, only what was identified as garbage in addition to other biohazardous materials.
- Completed approximately 260 assessments—engaging with people living in camps, collecting garbage and biohazardous materials, and coordinating with service providers.

This week we received:

1653 new campsite reports identifying 171 active campsites throughout the City.

Of these reports:

- 518 were reports of people living in vehicles.

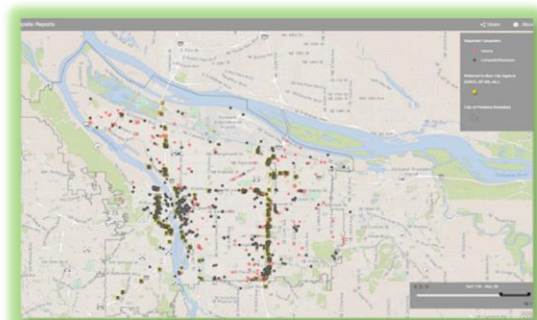
Due to COVID-19, HUCIRP has developed this protocol with regard to campsite cleanups:

<https://www.portlandoregon.gov/toolkit/article/756745>



**CLICK ON THE MAP ABOVE
TO SEE ALL LOCATIONS
REPORTED LAST WEEK**

**CLICK ON THE MAP BELOW TO
SEE ALL LOCATIONS
REPORTED IN THE LAST 12
WEEKS**





Homelessness/Urban Camping Impact Reduction Program Update:

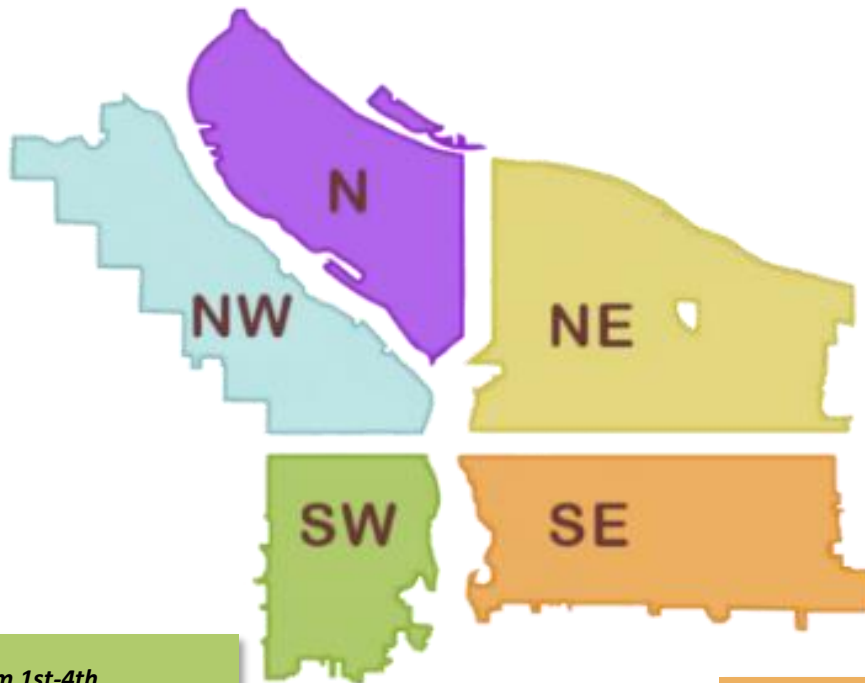
Last week we cleaned the following locations*:

**locations listed in italics indicate trash/debris/biohazards removal only*

- NW 6th and Glisan
- *NW 2nd and Flanders*

- N Going Interstate to Greeley
- East End Broadway Bridge
- *PCT North of Lombard*
- *109 N Gertz Rd*

- 8030 NE Clackamas
- *NE 91st and Hassalo*



- *I-405 SB from 1st-4th*
- SW 13th and Montgomery
- *SW Naito and Lincoln*

- 16571 SE Tibbets
- SE 79th and Powell
- I-205 MUP SE Holgate-Powell
- SE 42nd and Division
- SE 97th-99th and Pine
- SE 11th and Alder
- SE 96th and Duke
- 7200-7235 SE 62nd
- SE 13th and Powell
- SE 11th and Morrison
- 7200-7235 SE 62nd



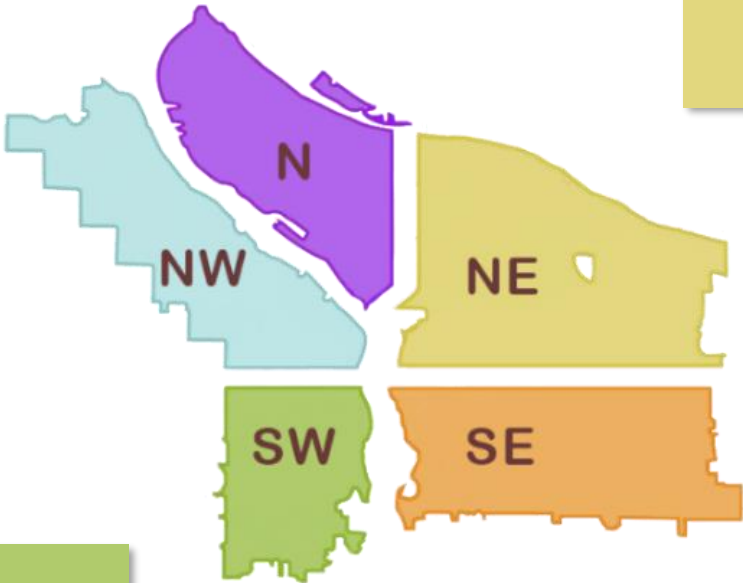
This week we are cleaning the following locations:

- N Williams and Weidler
- N Central and N Oswego
- I-5 SB and Ainsworth
- N Vancouver under I-5
- N Willamette and Maryland
- Denver and Schmeer hillside
- N Missouri and Fremont

- N Richmond and Crawford
- N Schmeer Denver To I-5
- NE 33rd Marine Dr to Elrod
- PCT and N Lombard
- Pier 99
- Swan Island boat ramp
- N Commercial and Russell
- N Hancock and Flint
- N Mississippi and Monroe
- N Central and N Richmond

- 10420 NE Klickitat
- Cross Levee-West
- Columbia Slough Trail near NE 138th
- NE 39th and Halsey
- Colwood East side
- I-84 NE 82nd Offramp
- NE 27th and Holladay
- NE 102nd and Weidler
- NE 105th and Fremont
- I-205 MUP Burnside-Glisan
- NE 12th and Lloyd
- Big 4 Corners
- NE Marx from NE 84th-NE 91st
- NE 82nd and Jonesmore/Halsey
- NE 97th and Glisan

- Steel bridge day storage and Bike path
- West Steel Bridge
- NW 3rd and Flanders-Glisan
- NW 2nd and Couch
- NW 3rd and Flanders
- I-405 SB from Glisan-Everett



- Collins Circle
- I-405 NB On-ramp on Montgomery
- SW 13th and SW Montgomery
- I-405 SB from 1st-4th
- SW 13th and Market
- SW 1st and Madison
- SW 10th - 12th and Salmon
- SW 4th and Main
- Ford St Above Market St Dr

- SE 136th and Powell
- Morrison Bridge Head
- Sunnyside School
- I-205 MUP from Holgate-Powell
- SE Oak from 37th - 39th
- SE 124th and Powell
- SE 24th and Schiller
- SE 26th and Mitchell

- SE 9th and Sandy
- Alice Springs
- Foster Floodplain
- SE 64-65th and Holgate
- SE 112th and Foster
- Zen Gardens
- SE 21st and Powell
- Brookside Property
- 4121 SE LeAnna Way
- 4223 SE Anderegg Way
- SE 26th and Schiller