



CITY OF PORTLAND

WEEKLY CAMPSITE REPORT

February 1 – 7, 2021

Last week, the Homelessness and Urban Camping Impact Reduction Program (HUCIRP):

- Conducted 6 campsite removals and 10 campsite cleanups.*
 - *Campsite removals indicate personal property has been removed and placed in storage. Cleanups mean no personal property was collected, only what was identified as garbage in addition to other biohazardous materials.
- Completed approximately 325 assessments—engaging with people living in camps, collecting garbage and biohazardous materials, and coordinating with service providers.

This week we received:

1600 new campsite reports identifying 186 active campsites throughout the City.

Of these reports:

- 566 were reports of people living in vehicles.

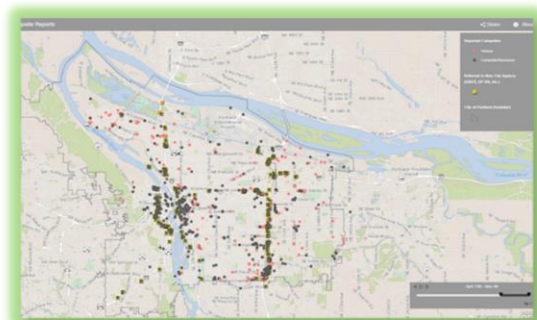
Due to COVID-19, HUCIRP has developed this protocol with regard to campsite cleanups:

<https://www.portlandoregon.gov/toolkit/article/756745>



**CLICK ON THE MAP ABOVE
TO SEE ALL LOCATIONS
REPORTED LAST WEEK**

**CLICK ON THE MAP BELOW TO
SEE ALL LOCATIONS
REPORTED IN THE LAST 12
WEEKS**





Homelessness/Urban Camping Impact Reduction Program Update:

Last week we cleaned the following locations*:

**locations listed in italics indicate trash/debris/biohazards removal only*

- N Central and N Oswego
- *2600 N Going*

- NW 10th and Northrup
- Steel bridge day storage and Bike path
- *NW 14th and Davis*

- *I-205 MUP Burnside-Glisan*
- *340 NE 99th*



- *SW 10th - 12th and Salmon*
- *SW 4th and Main*

- *SE Knapp*
- *SE 81st and Washington*
- *SE 124th and Powell*
- *SE Oak from 37th - 39th*
- *Knapp St*
- *SE 64th and Foster-Laurelwood Park*
- *I-205 MUP Harold-Holgate*

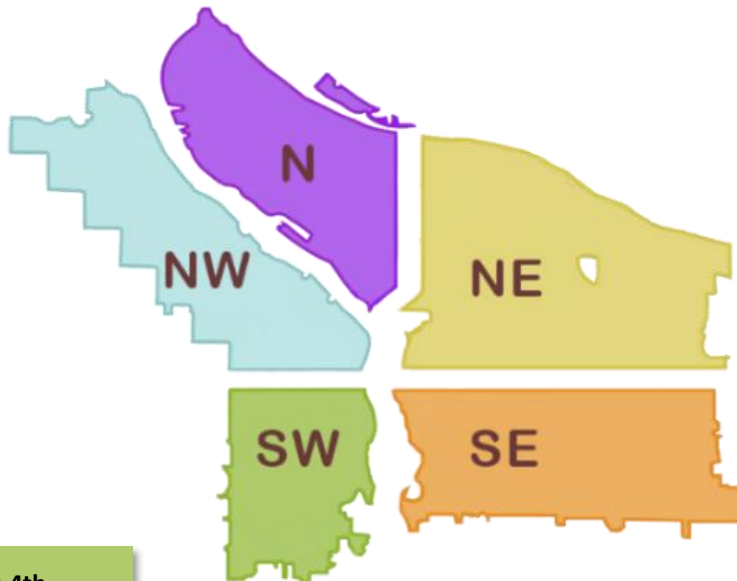


This week we are cleaning the following locations:

- N Williams and Weidler
- N Mississippi and Monroe
- 146 N Gertz Rd
- N Central and N Richmond

- 10420 NE Klickitat
- Cross Levee-West
- Columbia Slough Trail near NE 138th
- NE 87th and Emerson
- NE 97th and Glisan
- NE 105th and Fremont
- Big 4 Corners
- NE 27th and Holladay
- NE 102nd and Weidler

- West Steel Bridge
- NW 2nd and Couch
- NW 3rd and Flanders
- I-405 SB from Glisan-Everett
- NW 3rd and Flanders-Glisan



- I-405 SB from 1st-4th
- I-405 NB On-ramp on Montgomery
- Collins Circle (SW 18th and Jefferson)
- SW 13th and SW Montgomery
- SW 1st and Madison
- Ford St Above Market St Dr
- SW 16th and Yamhill

- I-205 MUP from Holgate-Powell
- 4121 SE LeAnna Way
- 4223 SE Anderegg Way
- SE 26th and Schiller
- Sunnyside School
- Morrison Bridge Head
- I-205 MUP Holgate-Schiller
- SE 79th and Powell
- SE 74th-75th and Powell
- SE 24th and Schiller
- SE 26th and Mitchell
- SE 112th and Foster
- 3200 SE 170th