



CITY OF PORTLAND

WEEKLY CAMPSITE REPORT

February 8 – 14, 2021

Last week, the Homelessness and Urban Camping Impact Reduction Program (HUCIRP):

- Conducted 9 campsite removals and 15 campsite cleanups.*
 - *Campsite removals indicate personal property has been removed and placed in storage. Cleanups mean no personal property was collected, only what was identified as garbage in addition to other biohazardous materials.
- Completed approximately 160 assessments—engaging with people living in camps, collecting garbage and biohazardous materials, and coordinating with service providers.

This week we received:

1277 new campsite reports identifying 96 active campsites throughout the City.

Of these reports:

- 472 were reports of people living in vehicles.

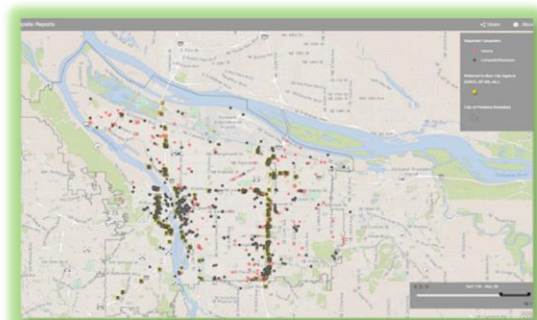
Due to COVID-19, HUCIRP has developed this protocol with regard to campsite cleanups:

<https://www.portlandoregon.gov/toolkit/article/756745>



**CLICK ON THE MAP ABOVE
TO SEE ALL LOCATIONS
REPORTED LAST WEEK**

**CLICK ON THE MAP BELOW TO
SEE ALL LOCATIONS
REPORTED IN THE LAST 12
WEEKS**





Homelessness/Urban Camping Impact Reduction Program Update:

Last week we cleaned the following locations*:

**locations listed in italics indicate trash/debris/biohazards removal only*

- NW 14th and Davis
- *NW 2nd b/t Couch and Burnside*

- 146 N Gertz Rd
- N Mississippi and Monroe
- 644 N Tillamook

- *NE 65th and Killingsworth*
- NE 97th and Glisan
- NE 39th and Halsey
- *NE 82nd and Jonesmore/Halsey*



- *Ford St Above Market St Dr*
- I-405 NB On-ramp on Montgomery
- *SW 16th and Yamhill*

- *SE Knapp*
- *SE 112th and Foster*
- *SE 11th and Sherrett*
- SE 79th and Powell
- SE 124th and Powell
- *4223 SE Anderegg Way*
- *SE 88th and Powell*
- *SE 23rd b/t Tolman and Bybee*
- I-205 MUP from Holgate-Powell
- *3200 SE 170th*
- *SE Knapp*
- SE 136th and Powell

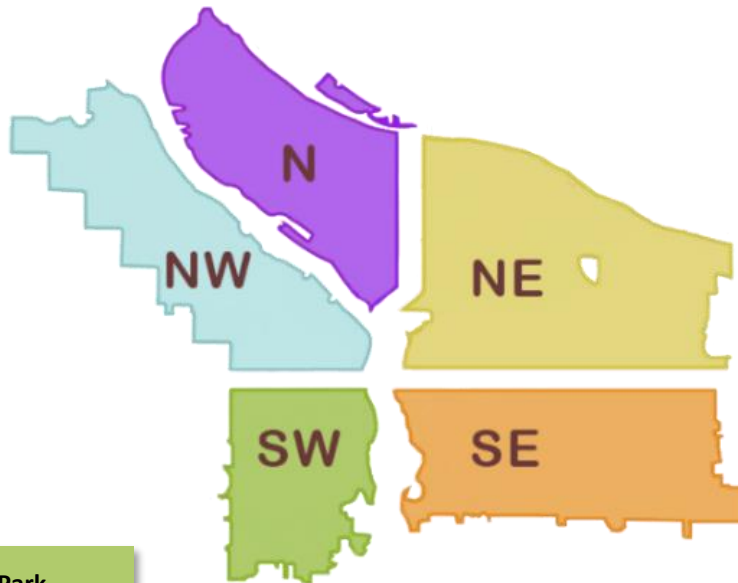


This week we are cleaning the following locations:

- N Williams and N Weidler
- N Central and N Richmond
- I-5 and Victory

- NE 87th and Emerson
- 10420 NE Klickitat
- Columbia Slough Trail near NE 138th
- Cross Levee-West
- NE 118th and Couch
- NE 102nd and Weidler
- Big Four North
- NE 27th and Holladay

- NW 16th and Overton
- NW 3rd and Flanders-Glisan
- West Steel Bridge
- I-405 SB from Glisan-Everett
- NW 2nd and Couch
- NW 3rd and Flanders



- Jefferson St City Park
- SW 13th and SW Montgomery
- SW 16th and Yamhill
- SW 1st and Madison
- I-405 SB from SW 1st-4th

- Oliver Lents School
- Sunnyside School
- I-205 MUP Holgate-Schiller
- East Morrison - Belmont-Morrison from Water-Grand
- SE 26th and Mitchell
- SE 26th and Schiller
- SE 24th and Schiller
- SE Powell and 79th
- 4121 SE LeAnna Way
- SE 74th - 75th and Powell
- I-205 and Powell SB On-ramp
- I-205 NB Powell Offramp
- SE 92nd and Crystal Springs