



CITY OF PORTLAND

WEEKLY CAMPSITE REPORT

February 22 – 28, 2021

Last week, the Homelessness and Urban Camping Impact Reduction Program (HUCIRP):

- Conducted 9 campsite removals and 18 campsite cleanups.*
 - *Campsite removals indicate personal property has been removed and placed in storage. Cleanups mean no personal property was collected, only what was identified as garbage in addition to other biohazardous materials.
- Completed approximately 273 assessments—engaging with people living in camps, collecting garbage and biohazardous materials, and coordinating with service providers.

This week we received:

895 new campsite reports identifying 145 active campsites throughout the City.

Of these reports:

- 203 were reports of people living in vehicles.

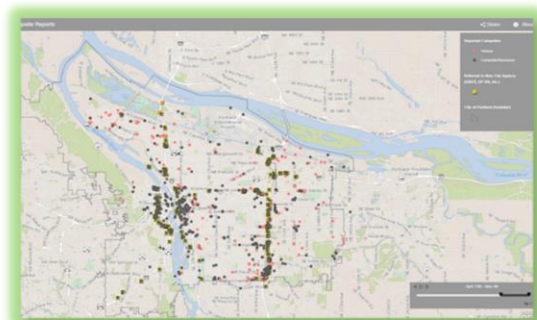
Due to COVID-19, HUCIRP has developed this protocol with regard to campsite cleanups:

<https://www.portlandoregon.gov/toolkit/article/756745>



**CLICK ON THE MAP ABOVE
TO SEE ALL LOCATIONS
REPORTED LAST WEEK**

**CLICK ON THE MAP BELOW TO
SEE ALL LOCATIONS
REPORTED IN THE LAST 12
WEEKS**





Homelessness/Urban Camping Impact Reduction Program Update:

Last week we cleaned the following locations*:

**locations listed in italics indicate trash/debris/biohazards removal only*

- *Through Clean Start, City conducted trash mitigation and site assessments at multiple reported locations in NW.*

- *N Hunt and Argyle*
- *N Central and N Richmond*
- *N Lombard and N Jersey*
- *N Lombard and Philadelphia*
- *N Williams and N Weidler*
- *9240 N Whitaker*

- *NE 38th and Sandy*
- *NE 97th b/t burnside and Glisan*
- *5620 NE 65th*
- *NE 118th and Couch*



- *SW Naito and Morrison (x2)*
- *Collins Circle*
- *SW 4th and Main*

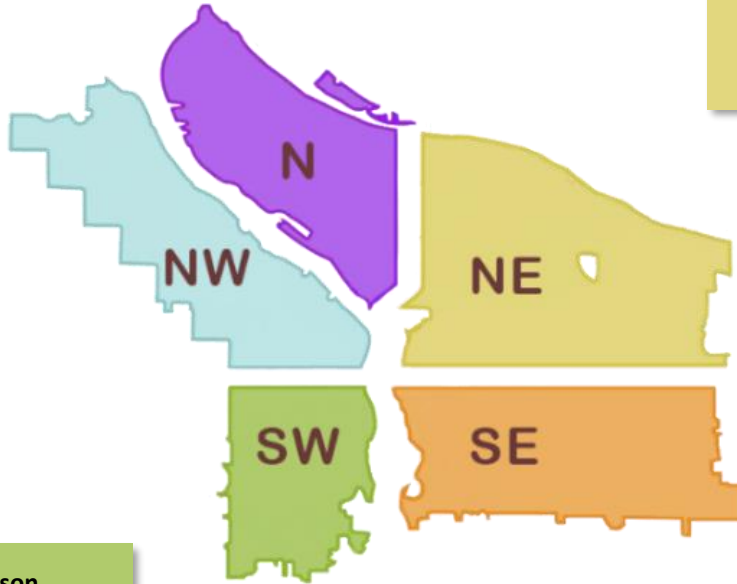
- *I-205 MUP Holgate-Schiller*
- *SE 2nd and Ash*
- *SE 96th and Foster*
- *SE Knapp*
- *8400 SE Woodstock*
- *SE 80th and Rhine*
- *SE Knapp*
- *SE Division Pl and Grand*
- *SE 26th and Steele*
- *SE Water and Hawthorne*
- *SE Powell and 79th*
- *SE 80th and SE Alder*
- *SE Glenwood and 96th*



This week we are cleaning the following locations:

- PCT N Lombard – Fessenden

- NW 3rd and Flanders-Glisan
- West Steel Bridge
- I-405 SB from Glisan-Everett
- NW 2nd and Couch
- NW 3rd and Flanders



- 10420 NE Klickitat
- Columbia Slough Trail near NE 138th
- Cross Levee-West
- Big Four North
- NE 27th and Holladay
- 578 NE Irving
- Big 4 Corners
- 1205 NE Russet

- SW 1st and Madison

- I-205 MUP SE Holgate to Schiller
- I-205 MUP SE Harold to Schiller
- 5642 SE 111th
- 4121 SE LeAnna Way
- SE 26th and Schiller
- East Morrison Water-Grand from Belmont-Morrison
- Sunnyside School
- SE Powell and 75th