



CITY OF PORTLAND

WEEKLY CAMPSITE REPORT

March 1 – 7, 2021

Last week, the Homelessness and Urban Camping Impact Reduction Program (HUCIRP):

- Conducted 7 campsite removals and 10 campsite cleanups.*
 - *Campsite removals indicate personal property has been removed and placed in storage. Cleanups mean no personal property was collected, only what was identified as garbage in addition to other biohazardous materials.
- Completed approximately 329 assessments—engaging with people living in camps, collecting garbage and biohazardous materials, and coordinating with service providers.

This week we received:

1053 new campsite reports identifying 220 active campsites throughout the City.

Of these reports:

- 248 were reports of people living in vehicles.

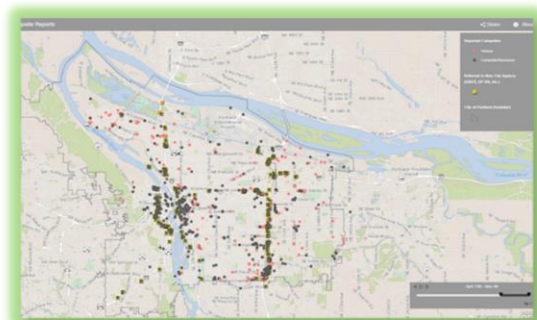
Due to COVID-19, HUCIRP has developed this protocol with regard to campsite cleanups:

<https://www.portlandoregon.gov/toolkit/article/756745>



**CLICK ON THE MAP ABOVE
TO SEE ALL LOCATIONS
REPORTED LAST WEEK**

**CLICK ON THE MAP BELOW TO
SEE ALL LOCATIONS
REPORTED IN THE LAST 12
WEEKS**





Homelessness/Urban Camping Impact Reduction Program Update:

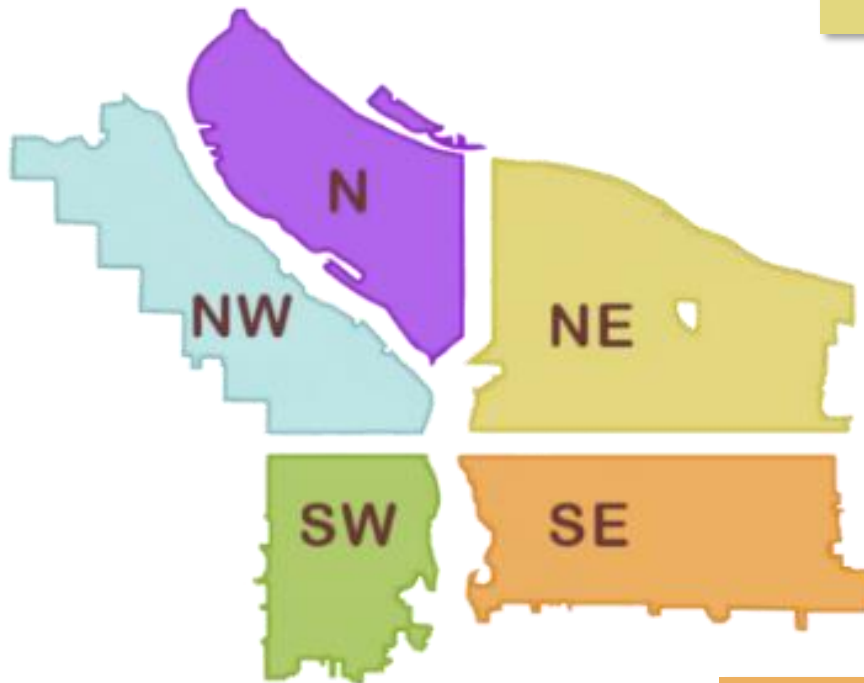
Last week we cleaned the following locations*:

**locations listed in italics indicate trash/debris/biohazards removal only*

- NW 3rd and Flanders
- *NW 5th and Irving*

- *Through Clean Start, City conducted trash mitigation and site assessments at multiple reported locations in North.*

- 7827 NE Siskiyou St
- 1205 NE Russet
- 3811 NE 81st
- NE 102nd and Weidler



- I-405 SB from SW 1st-4th

- I-205 MUP SE Holgate to Schiller
- I-205 Powell SB on-ramp
- *SE Knapp (x2)*
- I-205 MUP SE Harold to Schiller
- *SWCT 92nd - Foster*
- SE 33rd Powell- Franklin
- *SE 106th and Foster*
- *SE 110th and Foster*
- *SE 102nd and Woodstock*

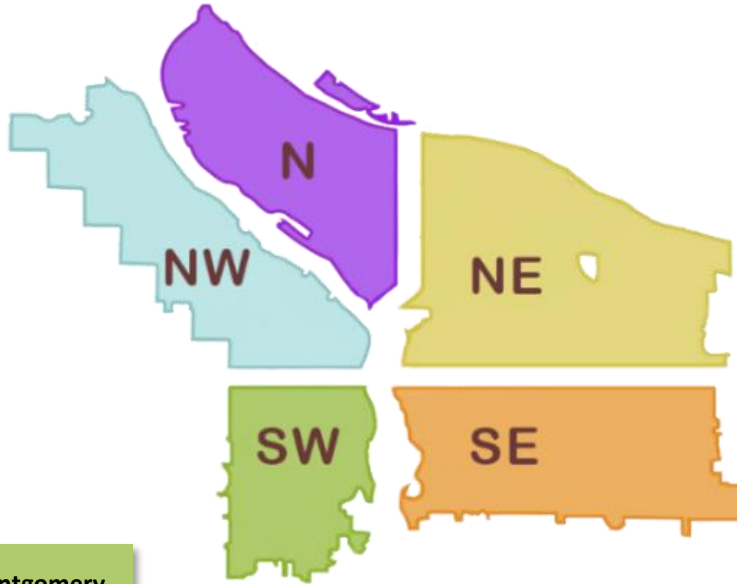


This week we are cleaning the following locations:

- N Russel and Commercial
- PCT N Lombard - Fessenden
- 401 N Thompson and I-5SB

- NE Grand and NE Lloyd
- 10420 NE Klickitat
- Columbia Slough Trail near NE 138th
- Cross Levee-West
- E Burnside 126th-127th
- NE 28th and Holladay
- NE 21st and Pacific
- NE Broadway and I-5 SB
- NE 7th and Irving
- NE 83rd and Halsey
- 578 NE Irving
- Big 4 Corners
- NE 27th and Holladay

- NW 2nd-4th from Flanders-Glisan
- West Steel Bridge
- NW 3rd and Flanders-Glisan
- NW 2nd and Couch
- I-405 SB from Glisan-Everett
- NW 21st and Reed



- SW 13th and Montgomery
- SW 1st and Madison

- Sunnyside School
- East Morrison Water-Grand from Belmont-Morrison
- 4121 SE LeAnna Way
- SE 26th and Schiller
- 5642 SE 111th
- East Hawthorne Bridge Loop