



# CITY OF PORTLAND

## WEEKLY CAMPSITE REPORT

March 15 – 21, 2021

### Last week, the Homelessness and Urban Camping Impact Reduction Program (HUCIRP):

- Conducted 4 campsite removals and 18 campsite cleanups.\*
  - \*Campsite removals indicate personal property has been removed and placed in storage. Cleanups mean no personal property was collected, only what was identified as garbage in addition to other biohazardous materials.
- Completed approximately 282 assessments—engaging with people living in camps, collecting garbage and biohazardous materials, and coordinating with service providers.

### This week we received:

901 new campsite reports identifying 181 active campsites throughout the City.

### Of these reports:

- 238 were reports of people living in vehicles.

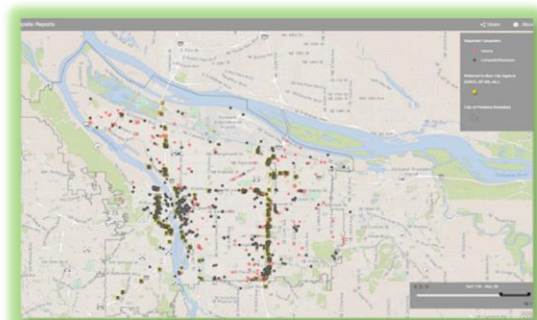
Due to COVID-19, HUCIRP has developed this protocol with regard to campsite cleanups:

<https://www.portlandoregon.gov/toolkit/article/756745>



**CLICK ON THE MAP ABOVE  
TO SEE ALL LOCATIONS  
REPORTED LAST WEEK**

**CLICK ON THE MAP BELOW TO  
SEE ALL LOCATIONS  
REPORTED IN THE LAST 12  
WEEKS**





# Homelessness/Urban Camping Impact Reduction Program Update:

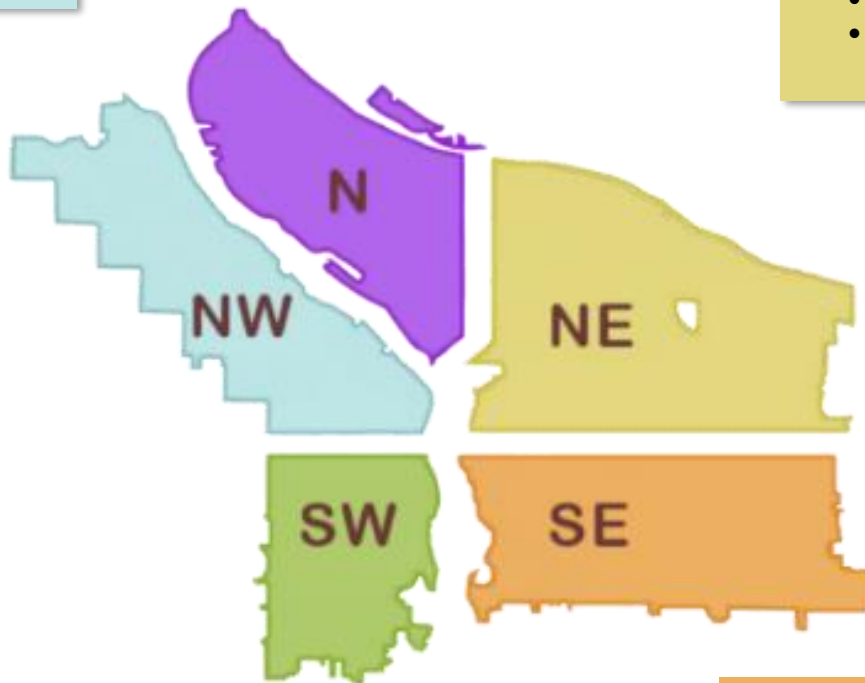
## Last week we cleaned the following locations\*:

*\*locations listed in italics indicate trash/debris/biohazards removal only*

- *NW 21st and Thurman*
- *NW 1st and Davis*
- *NW 21st and Reed*

- *Hayden Meadows Dr. dead end*
- *Pier 99 I-5 frontage Rd*
- *I-5 near Failing Ped Bridge area*

- *232 NE Middlefield*
- *NE 83rd and Halsey*
- *E Burnside 126th-127th*
- *NE 9th - 10th and Everett*
- *NE 6th and Halsey*



- *SW 3rd and Morrison*

- *SE 32nd and Sandy*
- *SE Knapp*
- *SE 22nd and Reedway*
- *SE 122nd and Rhone*
- *SE 26th and Steel*
- *Westmoreland City Park*
- *SE Water and Madison*
- *SE 137th and Rhine*
- *SE 96th*
- *SE Knapp*

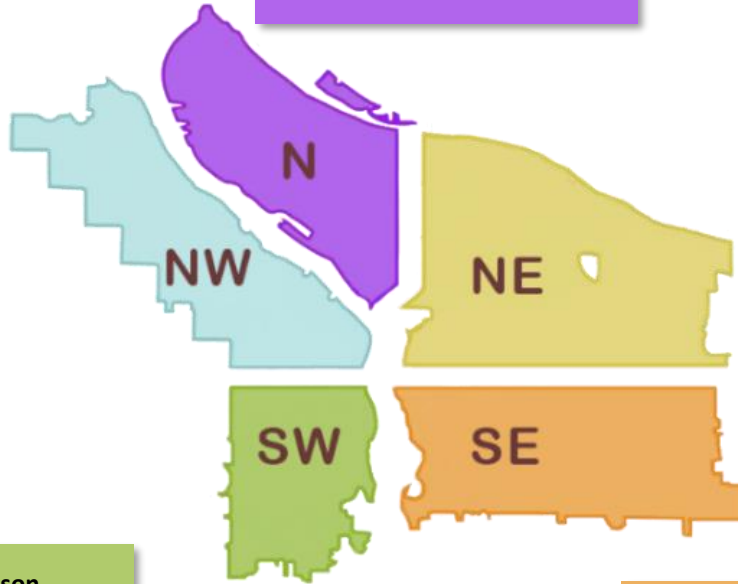


## This week we are cleaning the following locations:

- NW 2nd-4th from Flanders-Glisan
- West Steel Bridge
- NW 2nd and Couch
- I-405 SB from Glisan-Everett
- NW 6th and Irving

- Delta Park-North I-5 NB
- N Union Ct
- 10910 N Denver-I-5 N MLK Offramp
- 7500 N Richmond
- 109 N Gertz Rd
- N Gertz and MLK
- I-5 NB and Rosa Parks
- 1200 N River St.

- 10420 NE Klickitat
- Columbia Slough Trail near NE 138th
- Cross Levee-West
- NE 28th and Holladay
- NE 21st and Pacific
- Big 4 Corners
- NE 27th and Holladay
- NE 6th and Halsey
- NE 7th and Irving
- NE Grand and NE Lloyd
- NE 100th and Irving
- 2200 NE 71st Street



- SW 1st and Madison
- SW 13th and Montgomery

- I-205 MUP Harold - Holgate
- Sunnyside School
- I-205 and Division NB off ramp triangle
- I-205 MUP Clatsop - SWCT
- 2801 SE 10th
- 5642 SE 111th
- SWCT 92nd - Flavel
- East Hawthorne Bridge Loop
- 2835 SE 170th
- SWCT 82nd - Flavel
- SE 78 - 79th and Woodward