



CITY OF PORTLAND

WEEKLY CAMPSITE REPORT

April 12 – 18, 2021

Last week, the Homelessness and Urban Camping Impact Reduction Program (HUCIRP):

- Conducted 5 campsite removals and 21 campsite cleanups.*
 - *Campsite removals indicate personal property has been removed and placed in storage. Cleanups mean no personal property was collected, only what was identified as garbage in addition to other biohazardous materials.
- Completed approximately 161 assessments—engaging with people living in camps, collecting garbage and biohazardous materials, and coordinating with service providers.

This week we received:

1467 new campsite reports identifying 107 active campsites throughout the City.

Of these reports:

- 552 were reports of people living in vehicles.

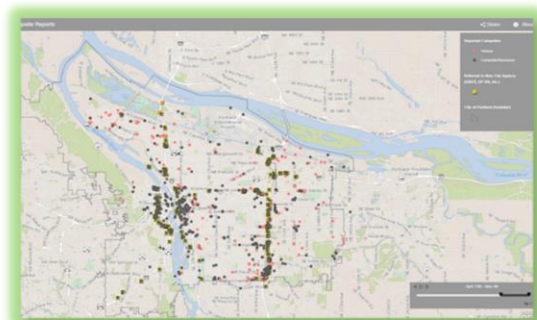
Due to COVID-19, HUCIRP has developed this protocol with regard to campsite cleanups:

<https://www.portlandoregon.gov/toolkit/article/756745>



**CLICK ON THE MAP ABOVE
TO SEE ALL LOCATIONS
REPORTED LAST WEEK**

**CLICK ON THE MAP BELOW TO
SEE ALL LOCATIONS
REPORTED IN THE LAST 12
WEEKS**





Homelessness/Urban Camping Impact Reduction Program Update:

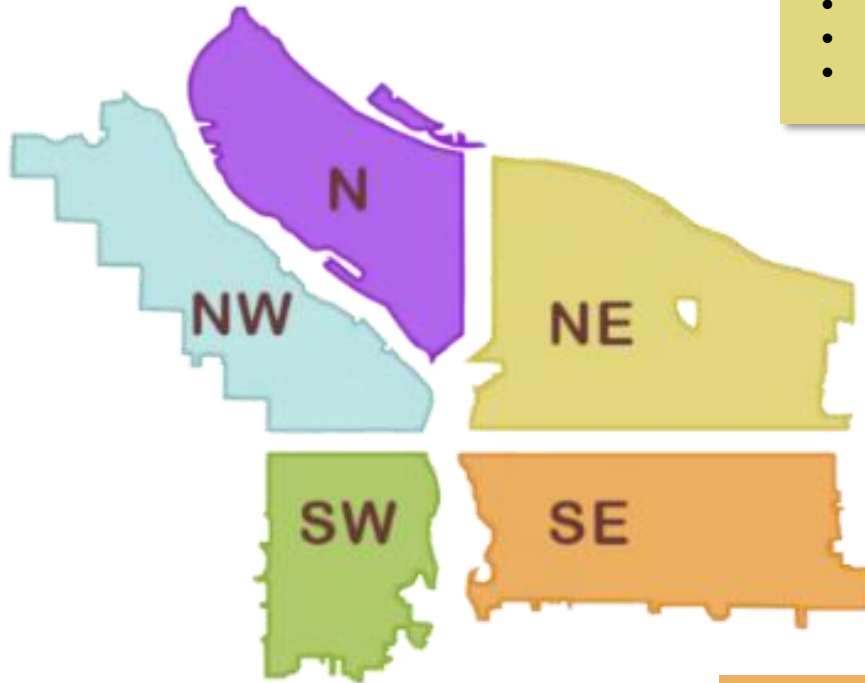
Last week we cleaned the following locations*:

**locations listed in italics indicate trash/debris/biohazards removal only*

- Tubman School
- 109 N Gertz Rd
- 1121 N Loring

- Burnside MAX - Saturday Market

- NE Grand and Clackamas
- NE 65th and Portland Hwy
- NE 71st and Broadway
- 10600 NE MLK NB
- 1809 NE Schuyler



- SW Park and Washington
- SW Naito and Harvey Milk
- SW 10th and Columbia
- SW 12th and Columbia
- OR43 over I-5 cages
- SW Naito under Morrison Bridge
- SW 6th and Broadway

- SE Knapp
- SE 11th and Alder
- Foster Floodplain
- SE 88th and Reedway
- SE 12th and Alder-Stark
- SE 139th and Powell
- SE Knapp
- SE 61st and Powell
- SE 74th and Powell
- I-205 MUP Harold - Holgate

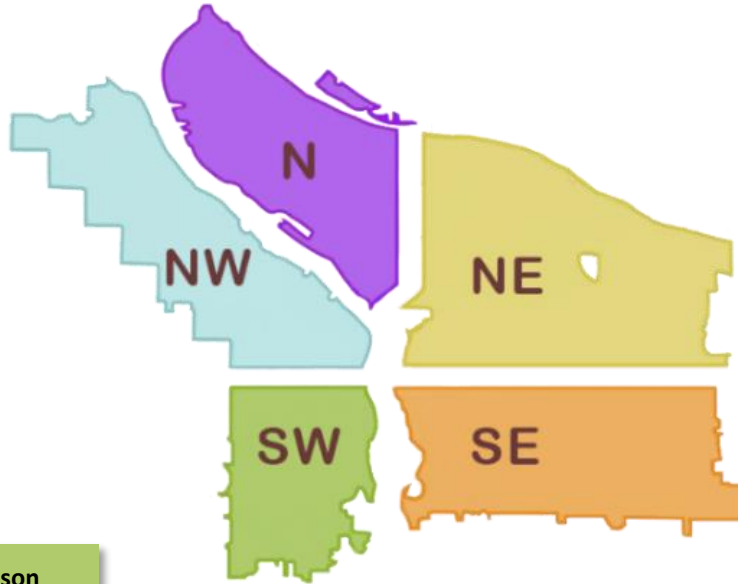


This week we are cleaning the following locations:

- West Steel Bridge
- NW 2nd and Couch
- I-405 SB from Glisan-Everett
- NW 20th and Hoyt

- I-5 and N Victory
- I-5 NB and Rosa Parks
- 1200 N River st
- Pier 99
- N Gertz and MLK
- 2045 N. Vancouver Ave. underpass

- 10420 NE Klickitat
- Columbia Slough Trail near NE 138th
- Cross Levee-West
- NE 118th and Couch
- NE 102nd Near I-84
- I-205 MUP Killingsworth - Alderwood
- I-205 MUP Burnside - Glisan
- Big 4 Corners
- NE 33rd and Sunderland



- SW 1st and Madison

- 2801 SE 10th
- SE 136th and Powell
- East Hawthorne Bridge Loop
- SE 29th and Waverleigh
- SWCT SE 82nd - Flavel
- 5642 SE 111th
- SE 30th and Stark
- SE 166pl and Division