



# CITY OF PORTLAND

## WEEKLY CAMPSITE REPORT

April 19 – 25, 2021

### Last week, the Homelessness and Urban Camping Impact Reduction Program (HUCIRP):

- Conducted 6 campsite removals and 15 campsite cleanups.\*
  - \*Campsite removals indicate personal property has been removed and placed in storage. Cleanups mean no personal property was collected, only what was identified as garbage in addition to other biohazardous materials.
- Completed approximately 273 assessments—engaging with people living in camps, collecting garbage and biohazardous materials, and coordinating with service providers.

### This week we received:

1310 new campsite reports identifying 152 active campsites throughout the City.

### Of these reports:

- 493 were reports of people living in vehicles.

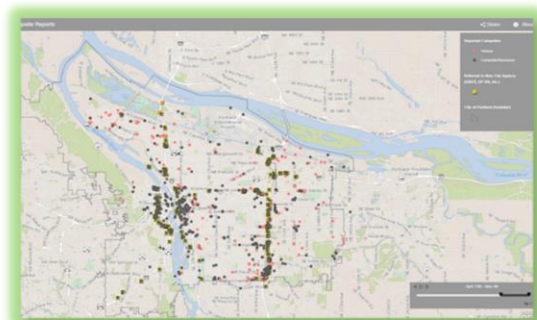
Due to COVID-19, HUCIRP has developed this protocol with regard to campsite cleanups:

<https://www.portlandoregon.gov/toolkit/article/756745>



**CLICK ON THE MAP ABOVE  
TO SEE ALL LOCATIONS  
REPORTED LAST WEEK**

**CLICK ON THE MAP BELOW TO  
SEE ALL LOCATIONS  
REPORTED IN THE LAST 12  
WEEKS**





# Homelessness/Urban Camping Impact Reduction Program Update:

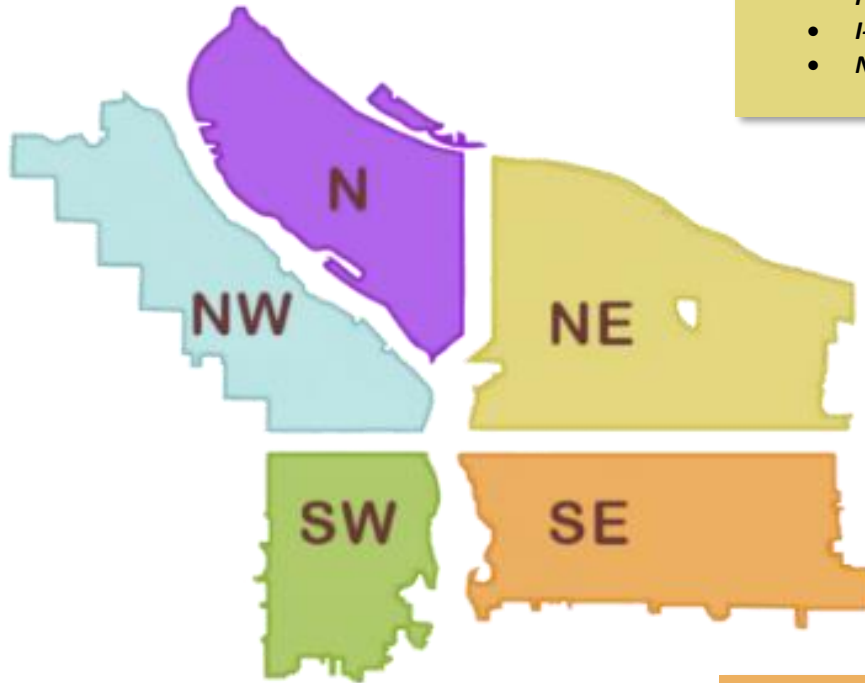
## Last week we cleaned the following locations\*:

*\*locations listed in italics indicate trash/debris/biohazards removal only*

- NW 3rd and Couch
- *NW 20th and Hoyt*

- *N Kerby and Hayden Meadows Dr*
- *10001 N Kerby*
- Pier 99

- NE 102nd Near I-84
- East Burnside and 160th
- *NE 33rd and Sunderland*
- *NE 166th and Division*
- *NE 105th and Holman*
- *I-205 MUP Killingsworth/Alderwood*
- *NE Killingsworth and Portland Hwy*
- *I-205 MUP and Sandy Blvd*
- *NE 75th and Beach*



- *Through Clean Start, City conducted trash mitigation and site assessments at multiple reported locations in SW.*

- *SE Water and Yamhill*
- *SE Knapp*
- *SE 136th and Powell*
- *8809 SE Henderson*
- *SE 30th and Stark*
- *SE Knapp*
- *SWCT SE 92nd to SE Flavel*

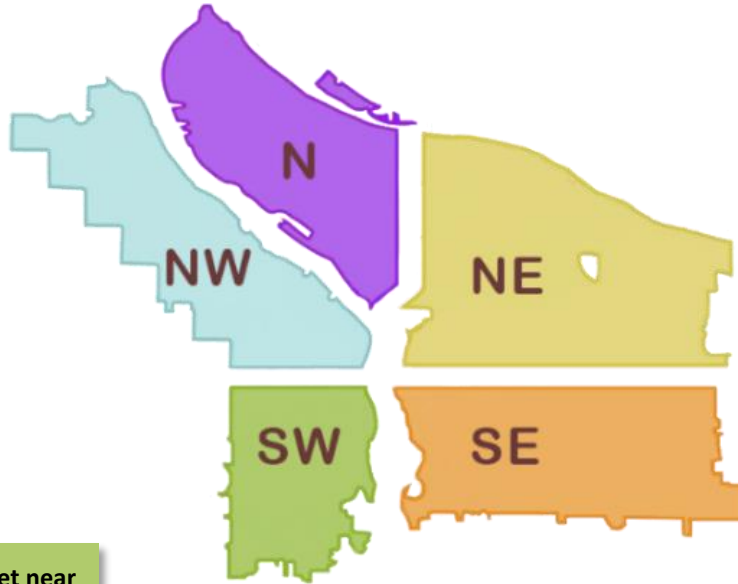


## This week we are cleaning the following locations:

- West Steel Bridge
- NW 2nd and Couch
- I-405 SB from Glisan-Everett

- I-5 and N Victory
- I-5 NB and Rosa Parks
- 1200 N River st
- N Gertz and MLK
- 2045 N. Vancouver Ave. underpass
- PCT North of Fessenden
- PCT and Columbia Blvd

- 10420 NE Klickitat
- Cross Levee-West
- Columbia Slough Trail near NE 138th
- NE 103rd and Clackamas
- NE 21st from NE Oregon to Pacific
- I-205 MUP Burnside - Glisan
- Big 4 Corners
- NE 6th and Oregon
- I-84 EB On-ramp and NE Grand
- Behind 1123 NE Tamera In
- 4999 NE 99th



- Saturday Market near Skidmore Fountain
- SW 1st and Madison

- 2801 SE 10th
- SE 166 Pl and Division
- SE 29th and Waverleigh
- SWCT SE 82nd - Flavel
- 5642 SE 111th
- 5402 SE 128th
- East Hawthorne Bridge Loop
- I-205 N Bound off-ramp