



CITY OF PORTLAND

WEEKLY CAMPSITE REPORT

September 13 – September 19, 2021

Last week, the Homelessness and Urban Camping Impact Reduction Program (HUCIRP):

- Conducted 7 campsite removals and 11 campsite cleanups.*
 - *Campsite removals indicate personal property has been removed and placed in storage. Cleanups mean no personal property was collected, only what was identified as garbage in addition to other biohazardous materials.
- Completed approximately 183 assessments—engaging with people living in camps, collecting garbage and biohazardous materials, and coordinating with service providers.

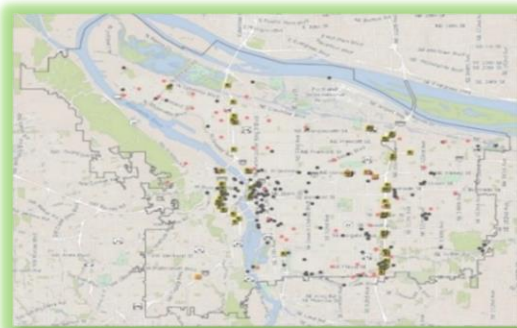
This week we received:

2004 new campsite reports identifying 123 active campsites throughout the City.

Of these reports:

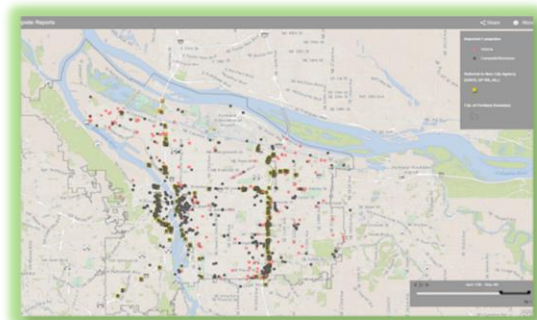
- 781 were reports of people living in vehicles.

Due to COVID-19, the Impact Reduction Team has revised its campsite removal protocols. [Click here](#) to read the complete revised COVID-19 protocol memo.



**CLICK ON THE MAP ABOVE
TO SEE ALL LOCATIONS
REPORTED LAST WEEK**

**CLICK ON THE MAP BELOW TO
SEE ALL LOCATIONS
REPORTED IN THE LAST 12
WEEKS**





Homelessness/Urban Camping Impact Reduction Program Update:

Last week we cleaned the following locations:

NOTE: Locations listed in bold face font indicate campsite removal.

Locations listed in italics indicate trash/debris/biohazards removal only.

- **NW 3rd and Everett (PPB Abatement)**

- **N Lombard and Montana**
- **N Victory and I-5**
- *Peninsula Crossing Trail*
- *N Houghton and N Calvert (Columbia Buffer Trail)*
- *Victory Blvd*
- *N Interstate South of Greeley*

- **NE 19th and Sandy (PPB Abatement)**
- **NE 20th and Pacific**



- **SW 11th and Taylor (PPB Abatement)**
- *Harvey Milk and Naito - 1st*

- **SE 12th and Main (PPB Abatement)**
- *SE Knapp (x2)*
- *SE 36th and Hawthorne (Fire Debris Removal only)*
- *SE 94th and Pardee*
- *SE 92nd and Powell*
- *SE 27th and Clay*

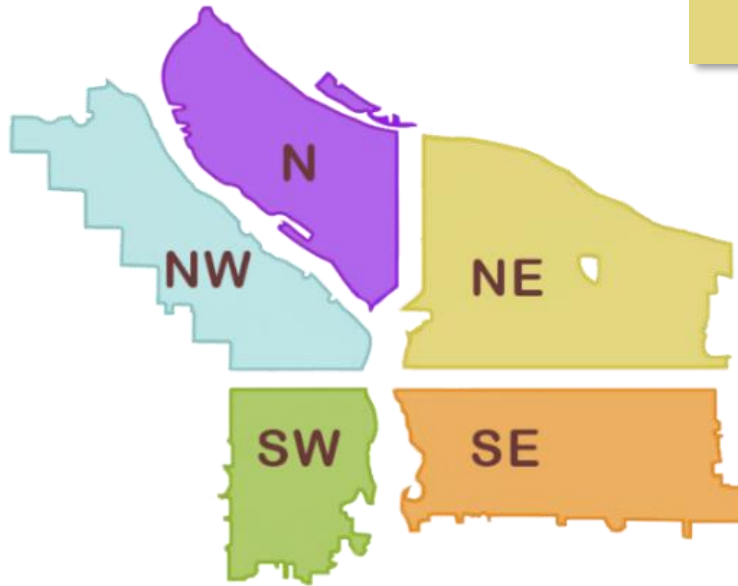


The following locations have been posted for removal:

- NW 21st and Upshur

- I-5 and N Victory
- Delta Park along I-5 NB
- N Union Ct and MLK
- Union Ct Dog Park
- I-5 SB near Kaiser Interstate

- NE Russell and NE Rodney
- Marine Way Bike Path
- NE 122nd and Siskiyou
- Pump Station 4 near Marine Dr



- SW Corbett and SW Woods

- SE 174th and Jenne Rd
- MUP near Salmon
- SE 29th and Waverleigh
- SE 19th and Division