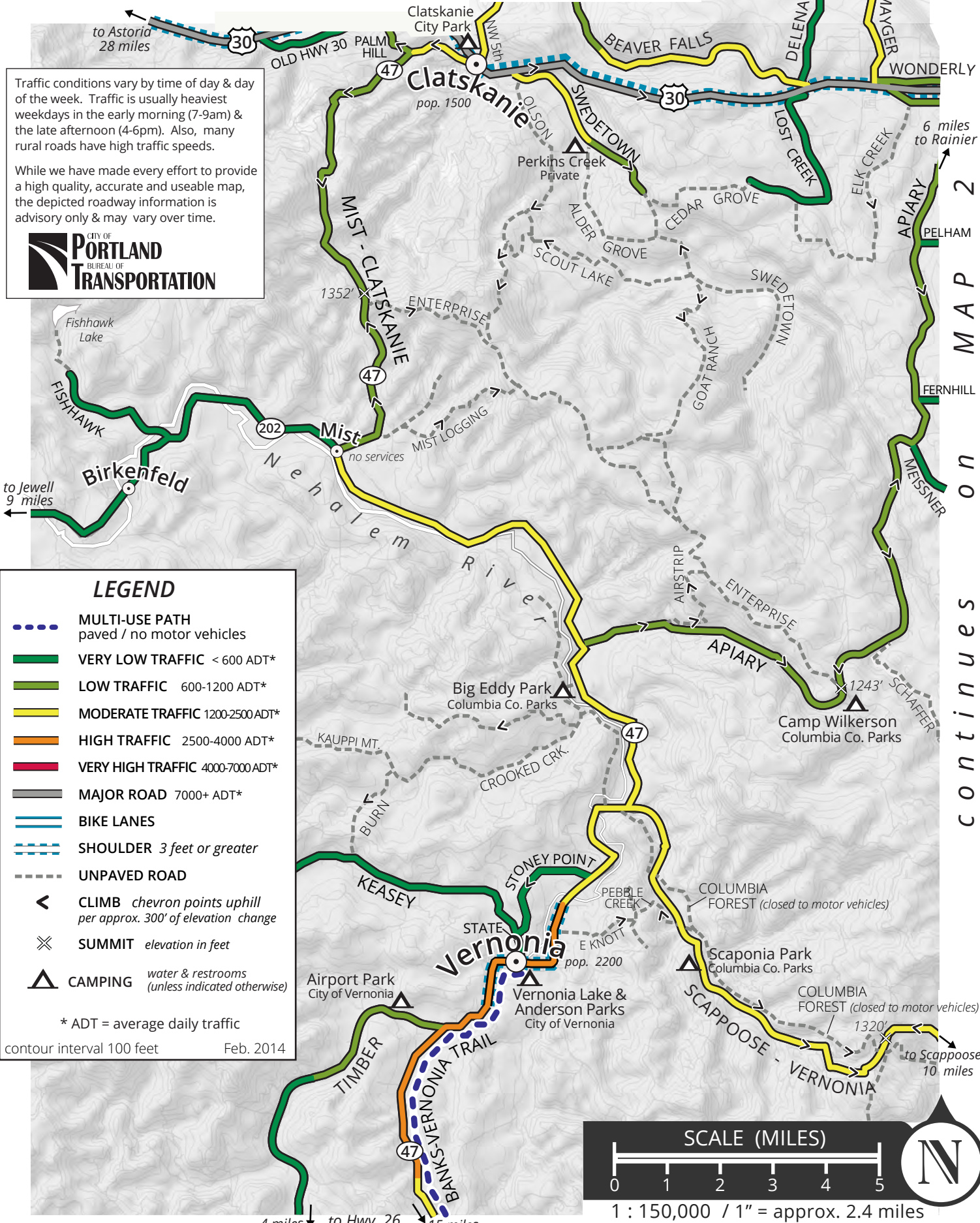


MAP 1 : VERNONIA / CLATSKANIE

PORTLAND AREA RECREATIONAL CYCLING MAPS

Traffic conditions vary by time of day & day of the week. Traffic is usually heaviest weekdays in the early morning (7-9am) & the late afternoon (4-6pm). Also, many rural roads have high traffic speeds.

While we have made every effort to provide a high quality, accurate and useable map, the depicted roadway information is advisory only & may vary over time.



LEGEND

- MULTI-USE PATH paved / no motor vehicles
- VERY LOW TRAFFIC < 600 ADT*
- LOW TRAFFIC 600-1200 ADT*
- MODERATE TRAFFIC 1200-2500 ADT*
- HIGH TRAFFIC 2500-4000 ADT*
- VERY HIGH TRAFFIC 4000-7000 ADT*
- MAJOR ROAD 7000+ ADT*
- BIKE LANES
- SHOULDER 3 feet or greater
- UNPAVED ROAD
- CLIMB chevron points uphill per approx. 300' of elevation change
- SUMMIT elevation in feet
- CAMPING water & restrooms (unless indicated otherwise)

* ADT = average daily traffic

contour interval 100 feet Feb. 2014

SCALE (MILES)



1 : 150,000 / 1" = approx. 2.4 miles



continues on MAP 4

continues on MAP 2

to Astoria
28 miles

6 miles
to Rainier

to Jewell
9 miles

to Scappoose
10 miles

4 miles to Hwy. 26
15 miles