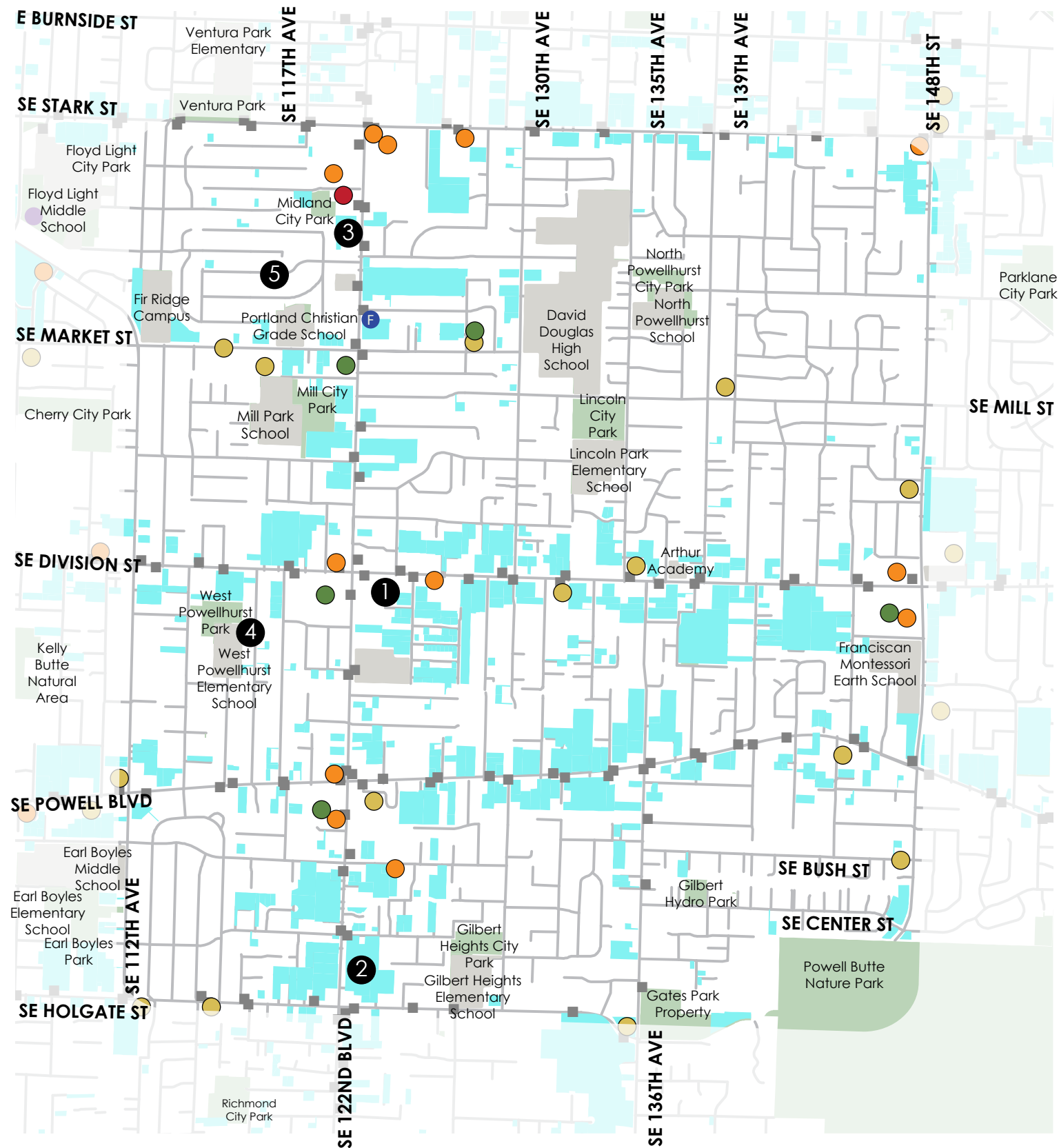


DRAFT



COMMUNITY ANCHORS

The project area has a variety of community anchors located throughout it. Anchors are places of importance and include destinations that people frequent regularly. They are places where people receive services or are places where people gather. Many of these anchors are along the busiest streets, while key sites like schools and parks are located inside these blocks, often surrounded by single family homes.



There are a lot of larger multi family apartment complexes in the project area. They are community anchors in and of themselves. Because so many families live in these complexes it's important that they are near other anchors and that there are accessible connections between them.

The Midland Library is a popular destination that serves all of East Portland and is therefore quite busy. The library provides a venue for many community events and serves as a point of access for a variety of resources. It also has individual rooms that community members can reserve.

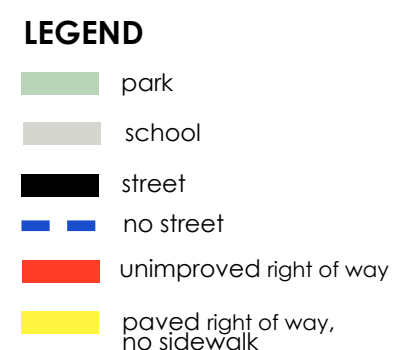
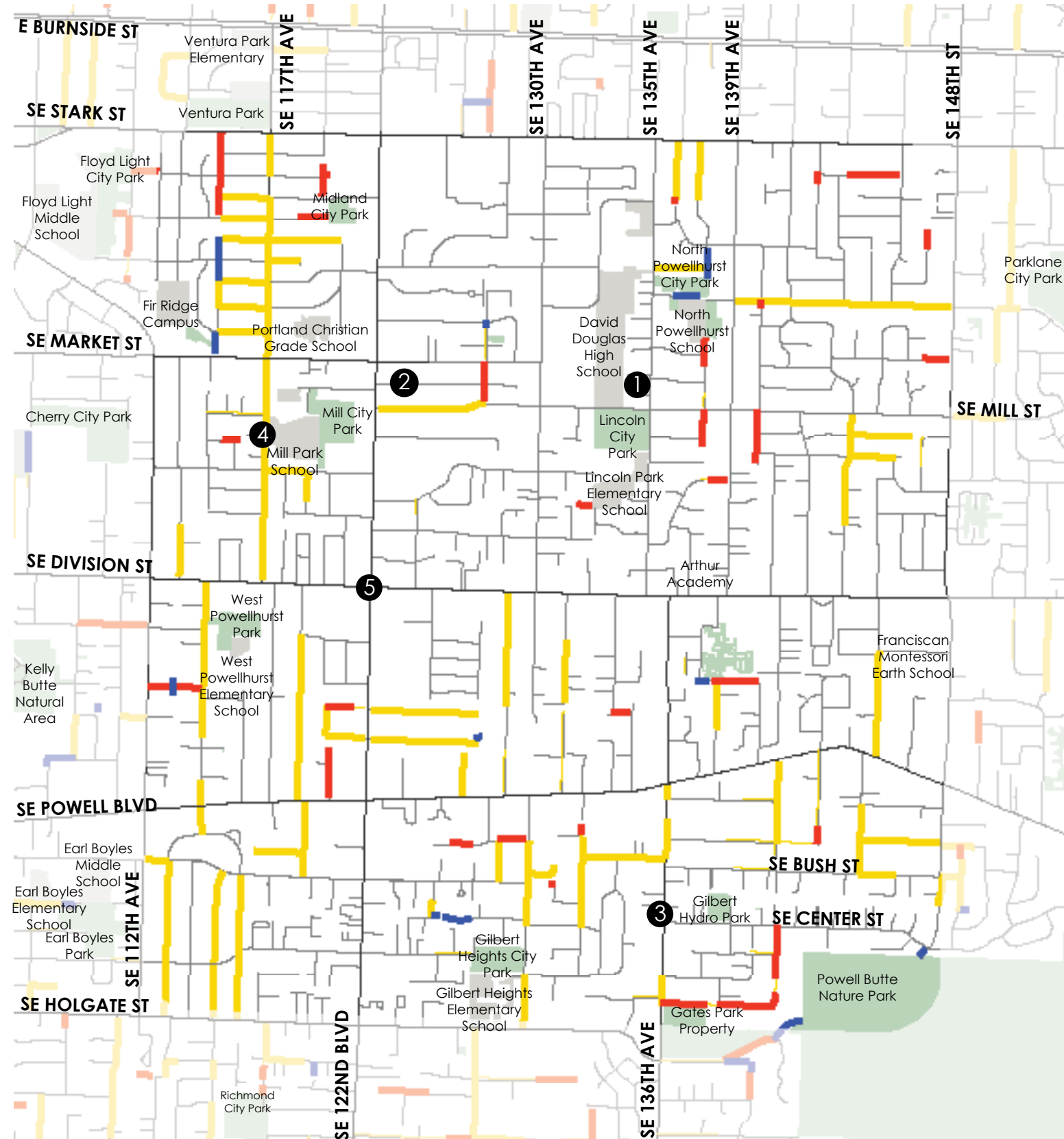
West Powellhurst Park and Elementary School are examples of the neighborhood schools and parks scattered throughout the district. Although this park and school are isolated due to a general lack of connectivity, open spaces and schools oftentimes serve connectivity needs. Residents use them for quick access through interior blocks. Areas around Division and Powell appear to lack open spaces the most.

Spiritual institutions fulfill a large role for some residents in the study area. In addition to serving their congregation, some institutions allow other spiritual practices to occur in them. They are also important because they offer a range of different community services and events. A number of them offer open space and community gardens for the community.

Grocery stores, emergency service facilities, post offices, and banks serve basic needs. While there are a number of banks located throughout the study area, check cashing businesses and automated teller machines are often more accessible alternatives to traditional banking services.

There is a strong desire in the community to create additional anchors, such as a multi-cultural center. Venues and gathering spaces like this are essential for an increasingly diverse and growing population. There are challenges to enhancing connections to existing anchors as well as opportunities for the location of new parks, anchors and commercial services.

- LEGEND**
- Multi-Family Housing
 - Park
 - School
 - Grocery
 - Emergency Services (Hospitals, Firestations, Police)
 - Post Office
 - Banks, ATM's, Check Cashing Services
 - Library
 - Community Center
 - Places of Worship



There are many types of connections in the study area. They vary from pedestrian scale pathways to major arterials. The variety of types gives East Portland a unique texture and character. However, the lack of connectivity between all these streets is problematic for pedestrians and cyclists.

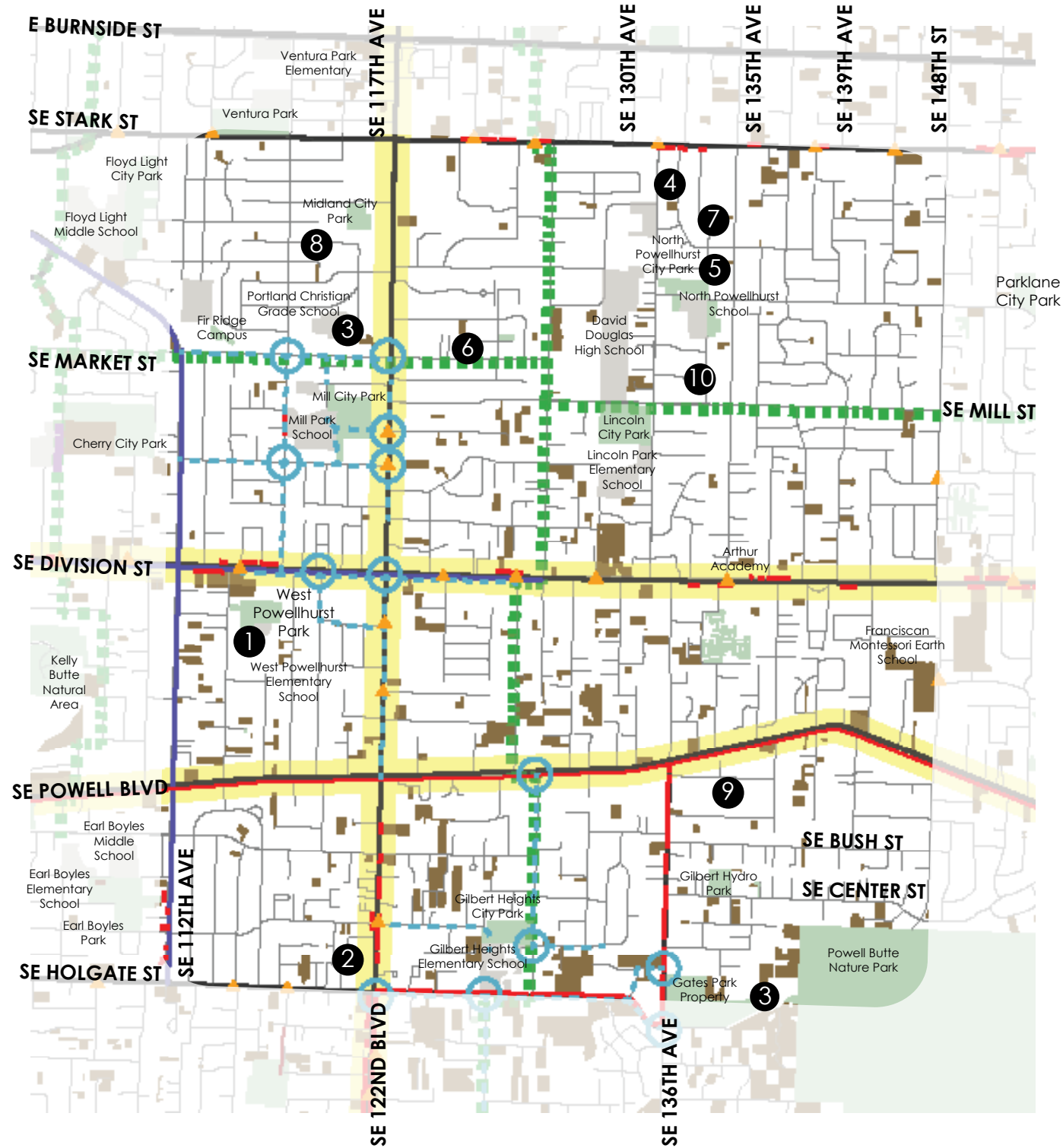
1 This short and narrow pathway leading to David Douglas High School is wedged between two single family homes. These types of pathways are an essential link for pedestrians in the neighborhood. However, because this path serves the high school primarily and is short in length, it does not connect to a larger street network. Pathways are nice to travel down because they are not wide enough for automobiles. However, many of these pathways are poorly lit and not easy to monitor for safety. Enhancing and creating more pathways that are well lit and maintained are one way to increase connectivity in the study area.

2 These types of gravelly, unimproved roads, generally located in the middle of residential areas, offer a connection to other streets. Unfortunately, with the winter rains, the surface can be slightly un navigable as there are ruts and stormwater in the road. This is most challenging for pedestrians, people in wheelchairs, and people pushing strollers.

3 Users are able to move easily along these types of paved roads. However, with the lack of sidewalks and no clear demarcation where other users might travel, the street can be unsafe for pedestrians.

4 These narrower secondary streets are in single-family residential neighborhoods with churches or schools oftentimes nearby. They are generally friendlier to pedestrians and cyclists because they have a lower volume of traffic than the major streets. However, many residents cite that high speeds can be a concern.

5 These multi-lane streets are mostly adjacent to commercial and multi-family residential units. These streets experience a high amount of use because the larger network lacks connectivity. Therefore, they can be quite congested and at times challenging for pedestrians to cross.



EXISTING CONNECTIONS

There is poor connectivity within the 122nd/Division study area. Outside of the few major corridors, there is not a distinct grid that allows residents to easily move across neighborhoods to reach specific destinations. Many distinctive pathways ease connectivity at the local level. However, this is an ad hoc, patchwork system that is exacerbated by few safe crossings along the major streets.

existing pathways

- 1 This connection at West Powellhurst Elementary is an intimate, well used, but dark access way. Because of vegetation growing around it not much light reaches it. This is problematic at night.
- 2 This narrow pedestrian / bicycle connection is a local access point for the neighborhood that connects two multi-family apartment complexes.
- 3 This grassy pathway utilizes a vacant lot to create a natural connection to allow pedestrians easier access to the neighborhood. If the lot is developed, the connection may not be maintained.
- 4 Pedestrians and bicycles navigate around this metal barrier to connect to a major and busy street.
- 5 This paved passageway leads to the county health clinic at David Douglas High School. Locating multiple services together may make it easier to create new connections.

1 West Powellhurst Elementary on SE 118th



2 SE 120th and SE Pardee



3 SE 115th and SE Hawthorne



4 SE 136th and SE Yamhill



5 Near SE 136th and SE Yamhill



6 SE 120th and SE Market



7 Near SE 138th and SE Salmon



8 SE 117th and SE Taylor



9 SE 138th and SE Main



10 SE 120th and SE Market



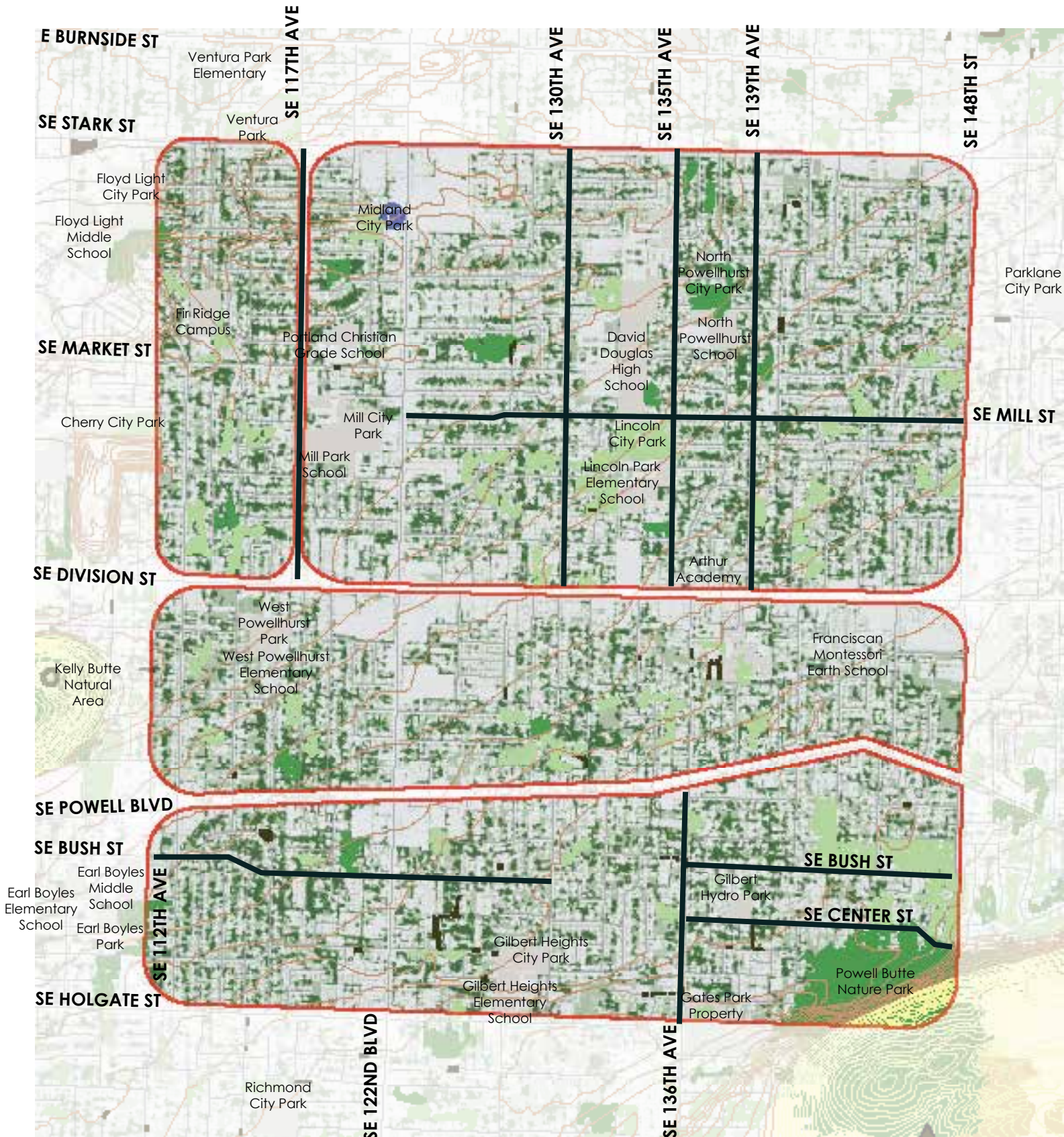
existing conditions & barriers

- 6 This alleyway terminates abruptly with no outlet. Garbage and graffiti are commonly seen here. This could be a safety hazard if someone enters the alley without understanding there is no exit. There are fences along the side of this alley that neighbors use occasionally.
- 7 Roads such as this unimproved road pool with water during winter rains, and can become an unreliable source of navigation and is hard for pedestrians and cyclists navigate.
- 8 Many streets have lights on one side of the road that help illuminate the road for automobiles. This is not ideal for pedestrians and cyclists.
- 9 This road is paved, but lacks sidewalks. This condition can be dangerous pedestrians as witnessed by this man in a wheelchair.
- 10 These fences make it challenging for bicyclists and strollers to access this entry into the popular North Powellhurst Park.

LEGEND

- SR2S Enhanced Crossings
- SR2S Pathways
- EPIM Recommended Crossings
- EPIM Recommended Sidewalks
- Neighborhood Greenways
- EPIM Bikelanes
- Bus Lines
- High Crash Corridors
- Park
- School

DRAFT



NEIGHBORHOOD CHARACTER

The Division-Midway area is a distinctive place. It has landscape and built features that are unique to the district. Future plans should highlight these special places to emphasize how inherently different East Portland is from other parts of the city.

LANDMARKS

Landmarks are structures or elements in the landscape that have prominence in the community. Examples include historic or culturally relevant places that are visually or physically distinctive. The clock tower at the busy intersection of 122nd and Division is an example of a memorable marker. Other examples include murals, buildings and signs. These markers are also helpful because people use them for wayfinding purposes.

VIEW CORRIDORS

Many established view corridors fall just outside the study area, especially in Powell Butte. However there are many noteworthy views throughout the area. Some views include view tunnels framed by canopies of trees and views of the buttes.

LANDSCAPE ELEMENTS

East Portland has many landscape features that make it distinctive. Stands of large canopy trees exist throughout the project area that provide needed shade and shelter for pedestrians. The area has many natural assets of large green spaces, such as Leach Botanical Garden, the Springwater Corridor, Powell Butte Nature Park and Kelly Butte Natural Area.

As the area continues to grow away from its rural past, it is important to take note of significant elements in the landscape to ensure that they remain a vital piece of the neighborhood fabric. Future development should build upon these character giving attributes and ensure that they are well connected to the community.

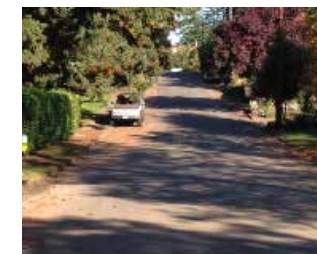
Iconic Structures



Mural on SE 122nd



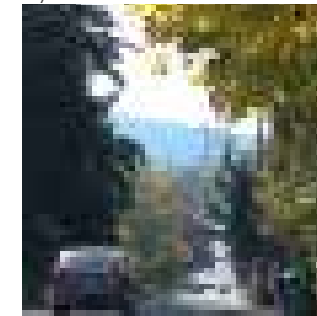
Hills



Undulating Street



View of Powell Butte framed by trees



LEGEND

- distinctly different areas
- street
- PBOT 'landscaped' streets
- larger vegetation patches
- tree canopy
- parks & open space
- established view corridors
- ▲ heritage trees
- topographic lines