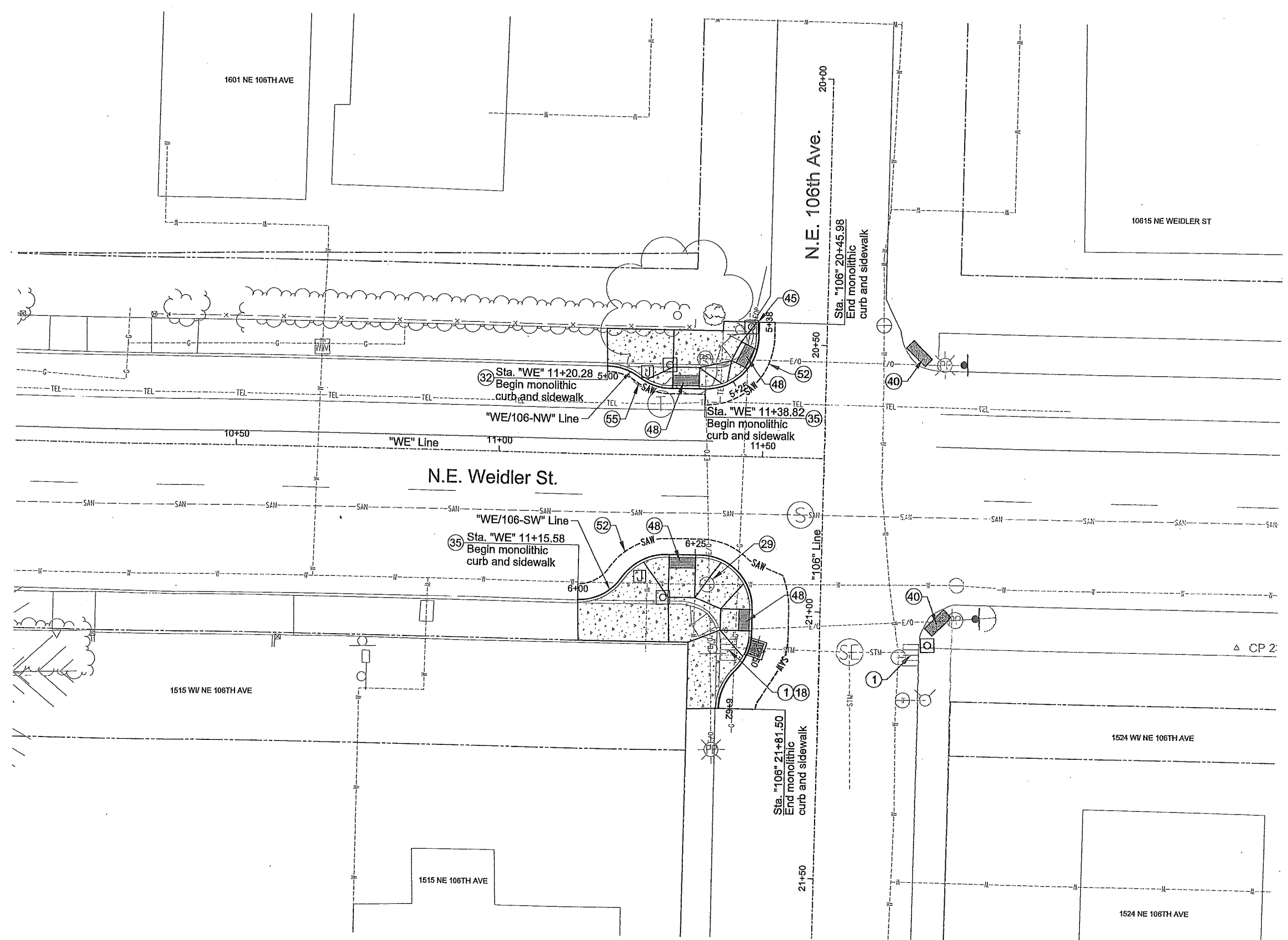
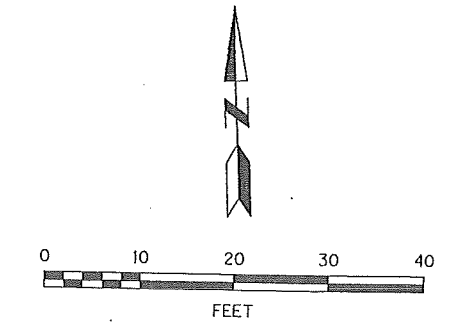


Filename: S:\\_l.Design\T00419 - East Portland RFB Project\CAD\PLAN\_SHEETS\SHIT 09 STREET PLAN - NE WEIDLER ST AT NE 106TH AVE.PLOT\_SHT\_09.dgn



- Construction Notes
- 1 Install inlet protection - 2. See Std. Drg. No. RD1010.
  - 18 Remove inlet - 1.
  - 29 Adjust water facility (by others).
  - 32 Construct monolithic curb and sidewalk with 10" AC pavement repair. See Detail "A" on Sht. 2B.
  - 35 Construct monolithic curb and sidewalk with 16" AC pavement repair. See Detail "D" on Sht. 2B.
  - 40 Install truncated domes. See Std. Drg. No. RD759.
  - 45 Construct curb ending. See Std. Drg. No. P-540.
  - 48 Construct monolithic sidewalk ramp. See Sht. 2F-3 and Std. Drg. No. RD755.
  - 52 Construct 16" AC pavement repair. See Detail "D" on Sht. 2B.
  - 55 Construct 10" AC pavement repair. See Std. Drg. No. P-506.



NO.	DATE	DESCRIPTION	APPD.
REVISION			

DESIGNED BY <b>L. Williams</b>	DATE APPROVED <b>April 2015</b>
CAD BY <b>C. Shearer</b>	DIV. ENGINEER <b>S. Townsen</b>
CHECKED BY <b>J. Joe</b>	

APPROVALS:

*Bob Gailer*  
SUPERVISING ENGINEER  
REG. PROF. ENGR. NO. 14956PE

*Steve Townsen*  
CITY ENGINEER  
REG. PROF. ENGR. NO. 51538PE

CITY OF PORTLAND  
BUREAU OF TRANSPORTATION

STEVE NOVICK  
STEVE TOWNSEN, P.E.

COMMISSIONER  
CITY ENGINEER



East Portland Rapid Flash Beacon Project

**Street Plan**  
**N.E. Weidler St.**  
**at N.E. 106th Ave.**

1/4 SECTION 2841
PROJECT NO. T00419
SHEET NO. <b>9</b>