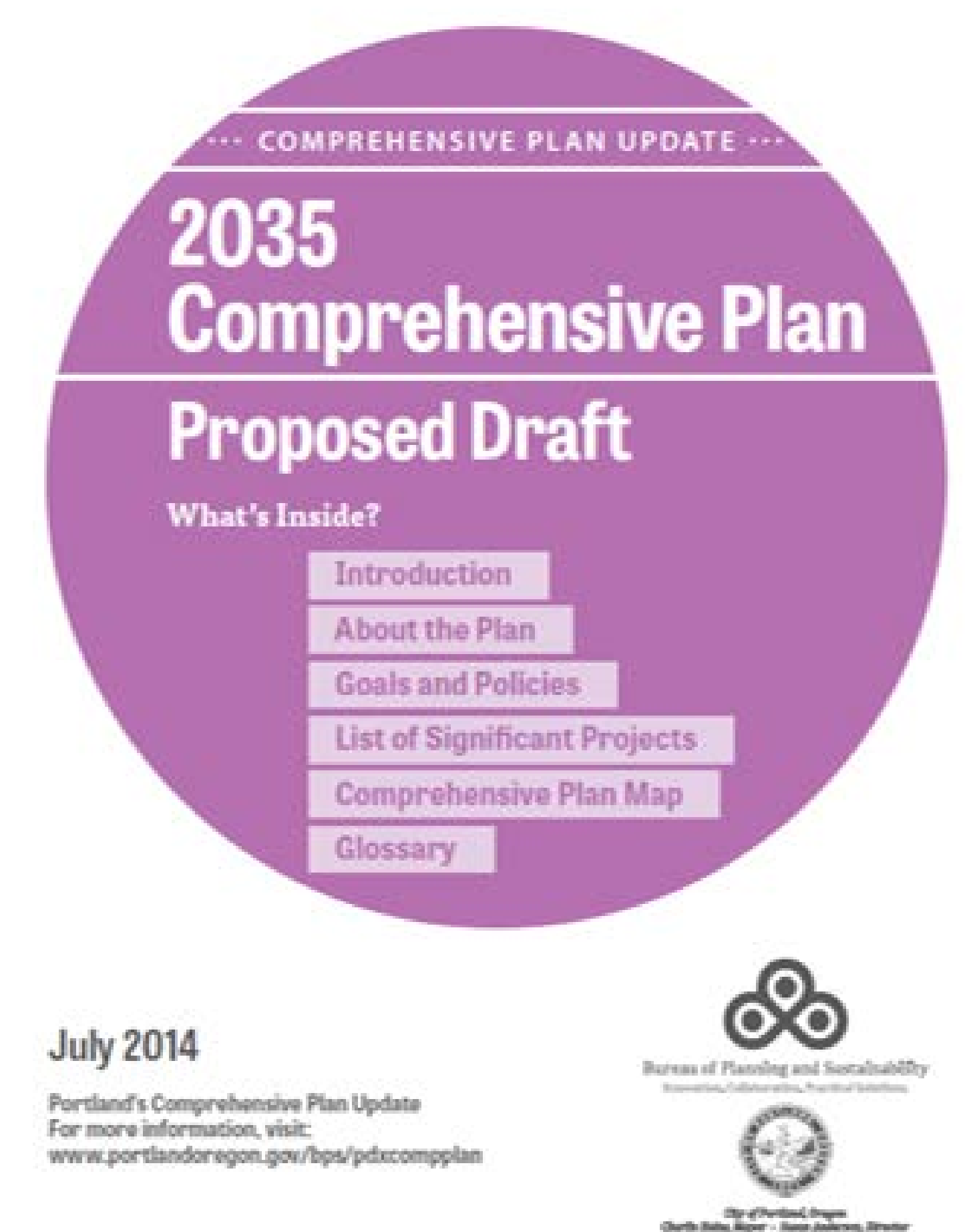
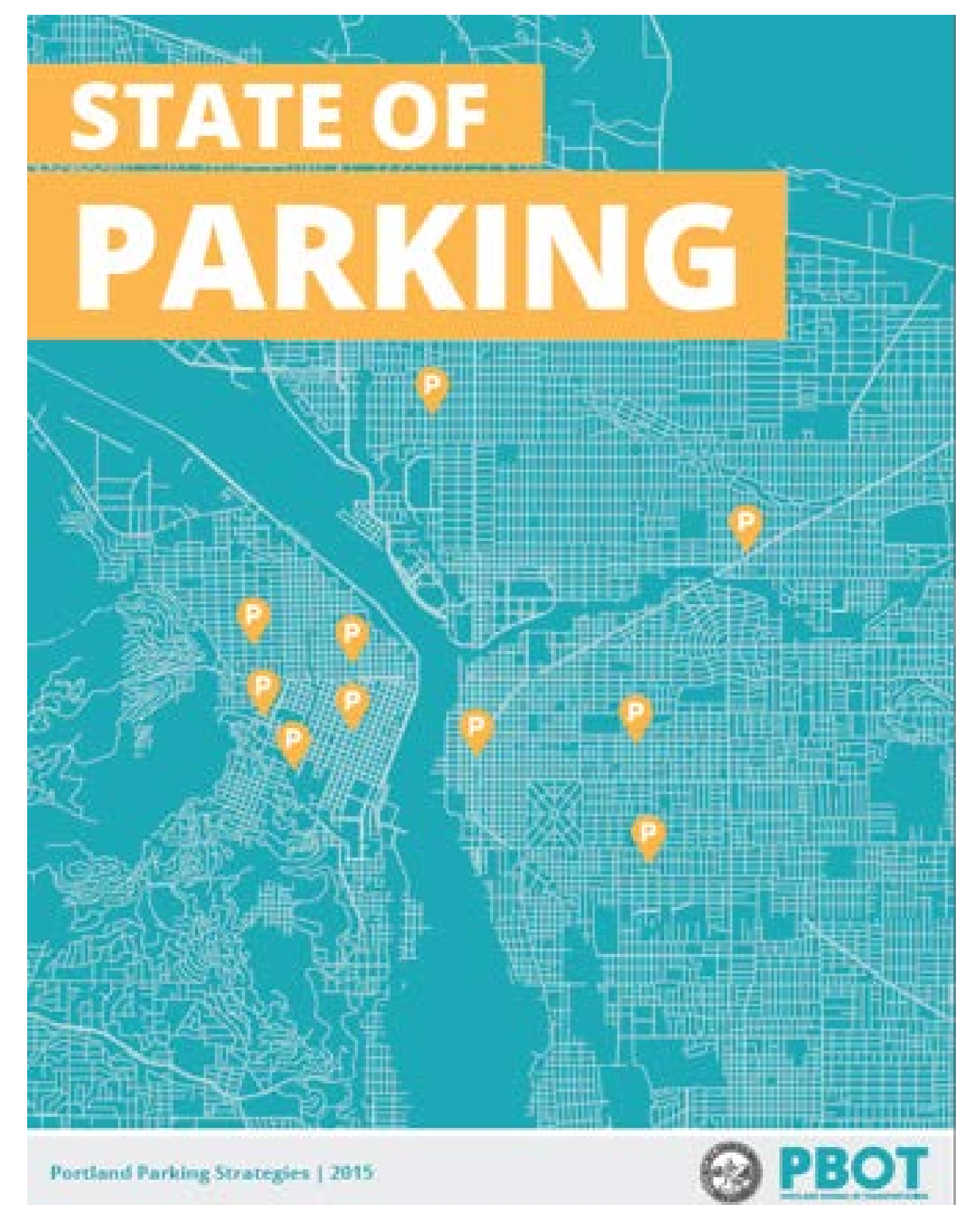


CITYWIDE PARKING STRATEGY

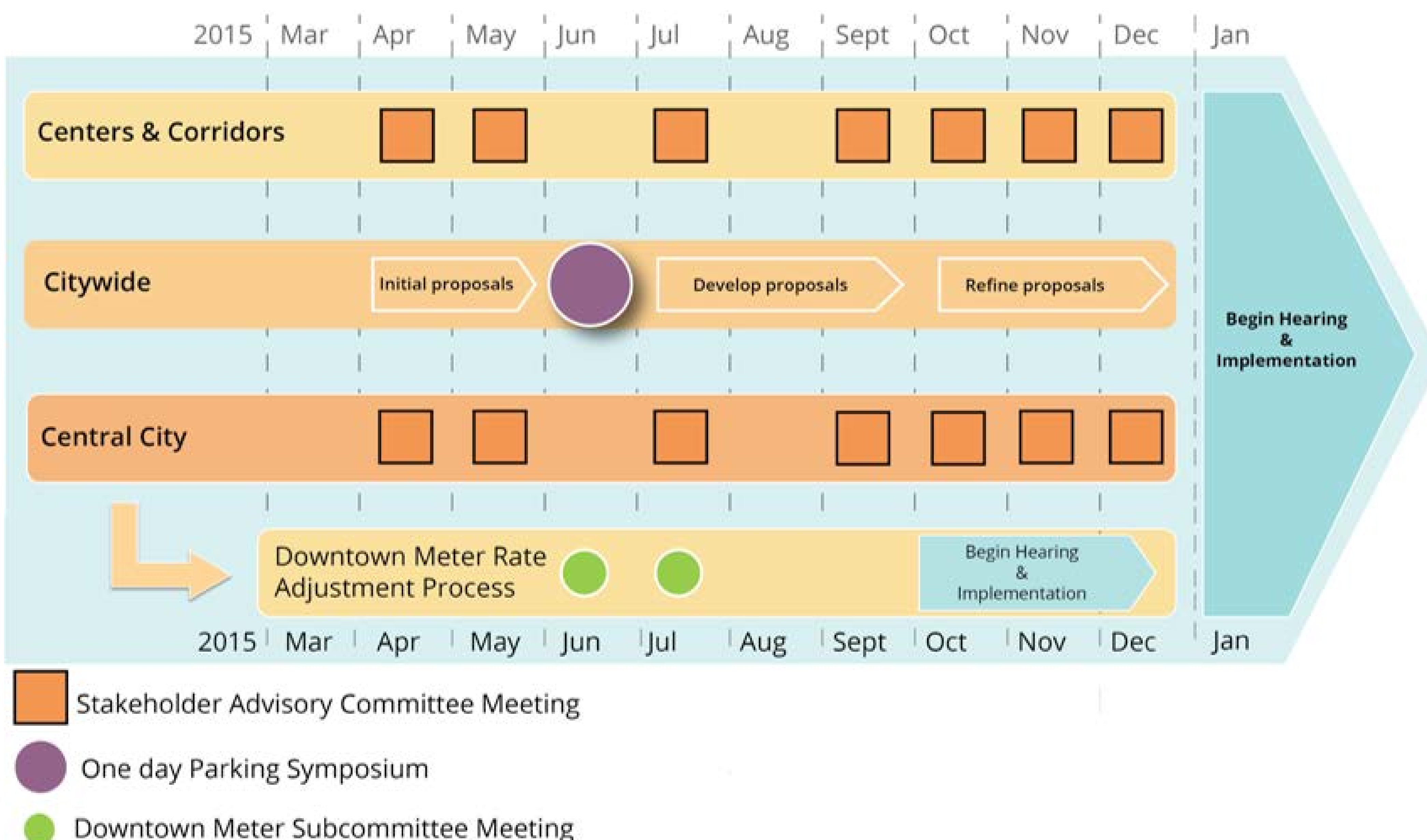
Key Products & Dates

- Central City **Truck Parking and Loading** Study (*currently underway*)
- **Bicycle Parking** update (*starting January 2016*)
- Updated parking policies in the **Comprehensive Plan** and **Transportation System Plan (TSP)** before Council *November 19th- December 10th, 2015*
- Proposed parking meter adjustment in the **Downtown Parking District** before Council *December, 2015*
- Central City 2035 Plan **parking policy and zoning code** recommendations before Council *Summer 2016*
- Creation of a new **Residential Permit program** before Council *Spring 2016*
- Proposal to create a **Performance Based Parking Management Framework** before Council *Spring 2016*



Project Time Line

The Citywide Parking Strategy is a multi-faceted effort



COMMITTEES

