

# MLK Pedestrian Strategy

WE KEEP PORTLAND *MOVING.*



**PBOT**  
PORTLAND BUREAU OF TRANSPORTATION

# MLK Pedestrian Strategy

## Tillamook to Ainsworth

### Key Findings

- 99 pedestrian related crashes, including 1 fatality and 2 incapacitating injuries.
  - 26 involved cars hitting pedestrians
  - 73 rearend crashes when cars stopped for peds
- Most crashes occurred at intersections (94%)
  - 10 peds were hit by left turners, 4 hit by right turners
- 25% of crashes occurred in dark conditions
- Only 3% of crashes involved alcohol
- Approximately 29-34% of drivers are driving over the posted speed (30 MPH.)

*Pedestrian Crash Data, 2010 to 2014*

# MLK Pedestrian Strategy

## Tillamook to Ainsworth

### Recommendations

- ✓ Upgrade signage and striping at existing crossings to current City Standards – COMPLETE.
- Add street lighting as needed – Summer 2017.
- Evaluate signal changes for advance walk signals – Summer 2017.
- Implement coordinated signal timing plan along entire corridor to address rearend crashes at crosswalks and discourage speeding. (*\$1M project funded through Heavy Vehicle Usage Tax, 2018.*)
- Ensure pedestrian visibility is not obscured by trees/vegetation – Summer 2017



## MLK at Going (NB)

- 1 ped hit while crossing, 19 rearends from cars stopping for peds or bikes (13 in northbound direction.)
- Funded project to improve signal coordination on MLK from Broadway to Columbia will address rearend crashes, and should also provide better gaps for bikes and peds crossing MLK corridorwide.



## MLK at Alberta (WB)

- 9 crashes involved pedestrians or bicyclists getting hit. 5 of these crashes involved drivers turning left from Alberta.
- Add protected left turn signals on Alberta, funded by private development, 2017.



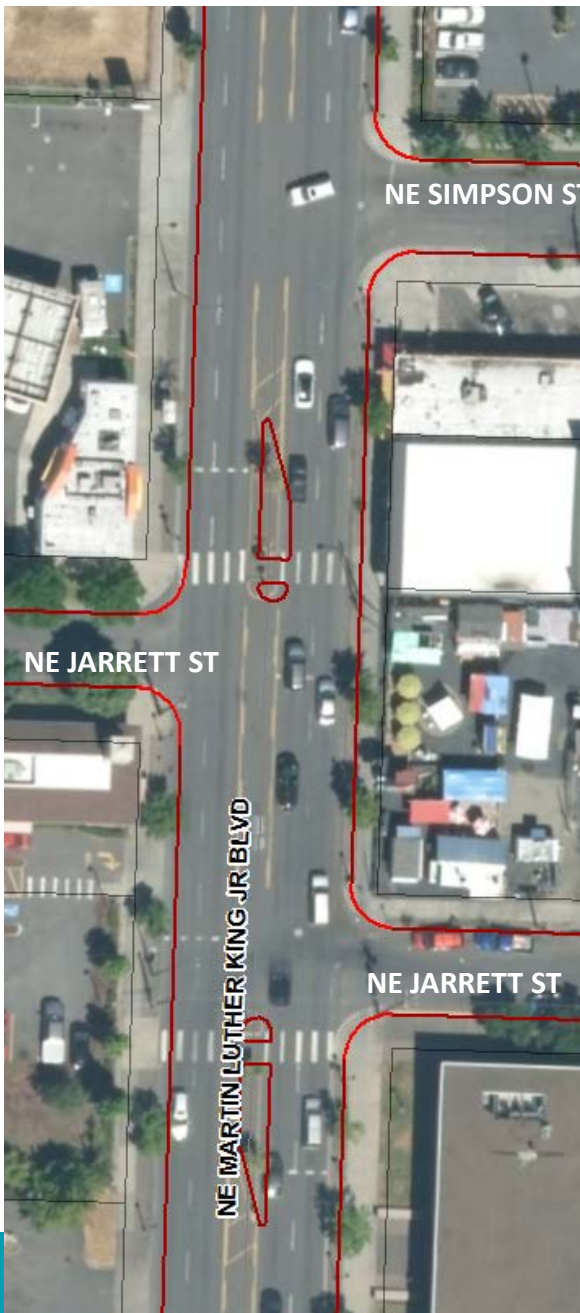
- Ped signage and striping upgrades have been completed.
- Evaluate lighting levels at crosswalks

# NE Jessup & NE Church



# Simpson & Jarrett

- At Simpson: 3 NB rearend crashes stopped for pedestrians
  - North leg Jarrett: 1 ped hit, 5 rearend crashes stopped for peds
  - South leg Jarrett: 1 ped hit, 1 bike hit and 2 rearend crashes stopped for peds
  - Signs blocked by trees and other signs
- 
- How do peds used these crossings?
  - Should existing crossings be adjusted or moved to Simpson?





## NE Emerson, Wygant, Mason & Cook

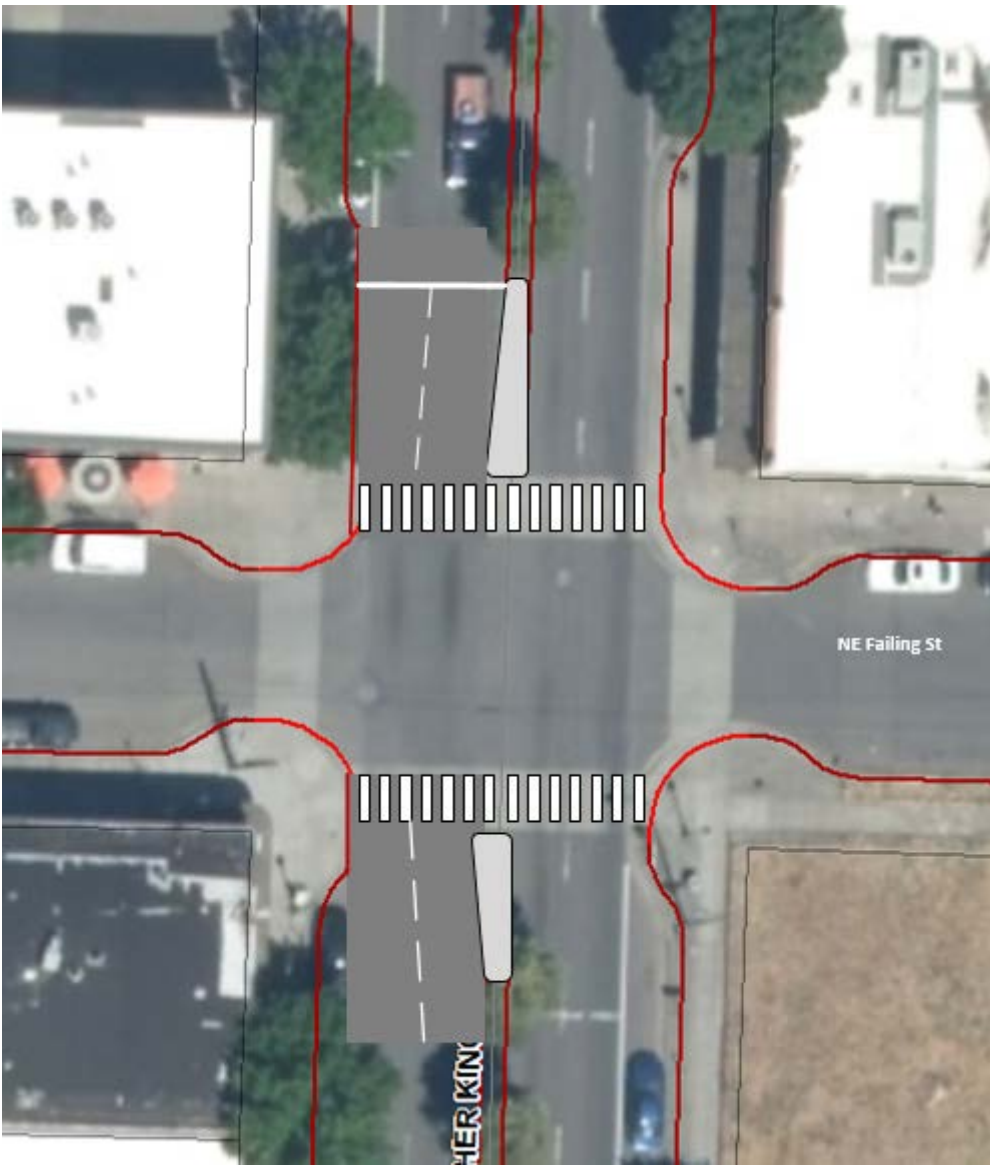
- Consider tree removal in island when immediately adjacent to crosswalks for better visibility
- Evaluate street lighting levels





## Failing & Beech

- At Failing: 2 peds and 1 bike hit while crossing, 3 rearends from cars stopping for peds and 1 ped hit from an auto-auto crash.
- At Beech: 1 ped crash and 1 rearend crash stopped for ped have been reported.



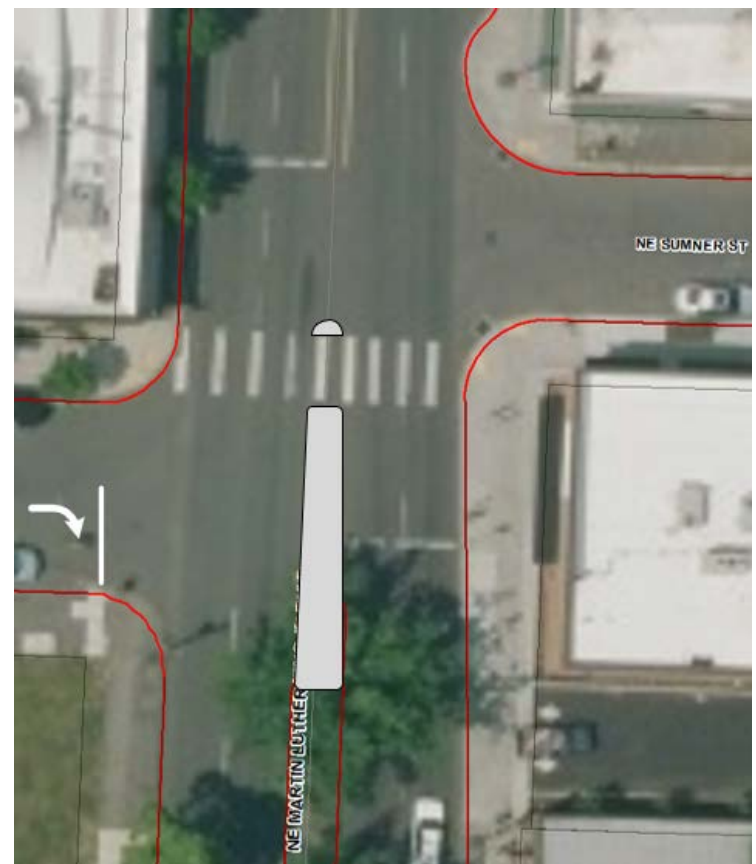
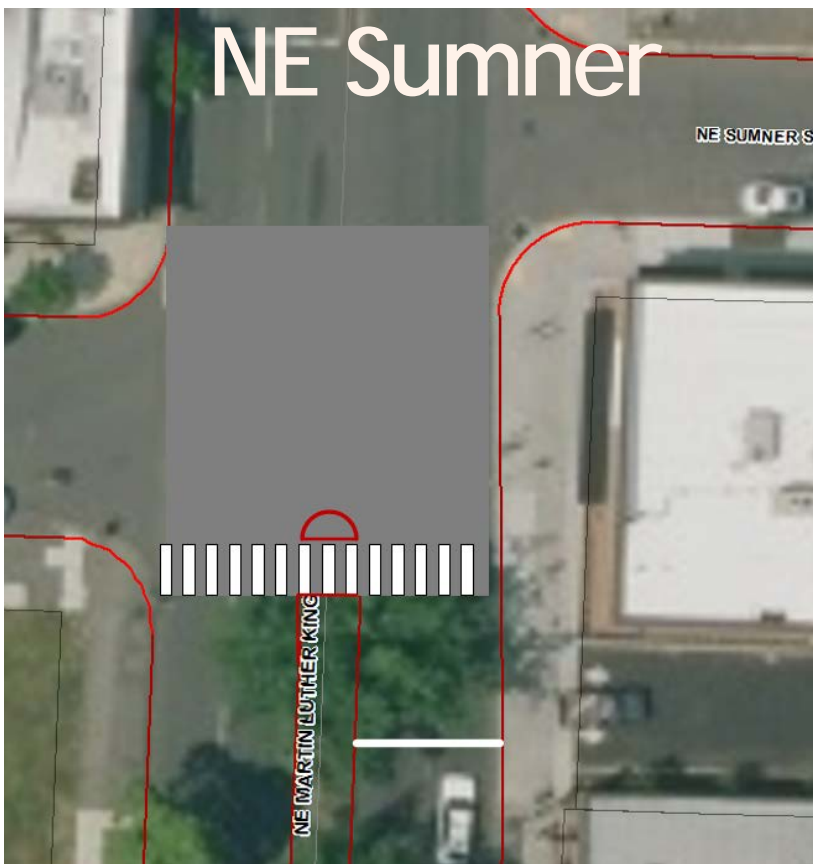
# Failing & Beech

- 4' median is not wide enough to provide refuge for peds. Reduce curb extensions on one side and widen median to min. 6'.
- Stripe crosswalks and upgrade signing and striping.
- \$62,500 per intersection



## NE Sumner & Graham

- At Sumner: 1 ped hit while crossing, 8 rearends from cars stopping for peds. 8 crashes involved northbound drivers
- At Graham: 1 ped hit while crossing, 6 rearends from cars stopping for peds & bikes



- Existing crossing must cross 4 lanes of traffic in one crossing.
- Move crossing south to utilize existing median (may require tree removal – OR –
- Extend median north to existing crossing; prohibit lefts from west.

Location	Treatment	Cost
Ainsworth & Russell	Add advance walk signal for peds	\$1000
Jarrett* & Simpson	Signs/striping, lights, modify xwalk	\$9500
Jessup & Church	Upgrade signs/striping, illumination	\$18,000
Emerson	Update signs/striping, tree removal	\$2500
Sumner*	Extend island/move xwalk, lighting	\$50,000
Alberta	Add protected lefts on Alberta	Private funding
Wygant	Signs/striping, lighting, tree removal	\$33,000
Going *	Address through signal timing project	Other funding
Mason* & Cook*	Signs/striping, tree removal	\$8000
Failing* & Beech	Modify curb ext & island	\$125,000
Cook*	Signs/striping, tree removal	\$5000
Graham*	Modify curb ext & island, limb tree	\$62,500
Total		\$314,500

\* Priority locations base on crash data