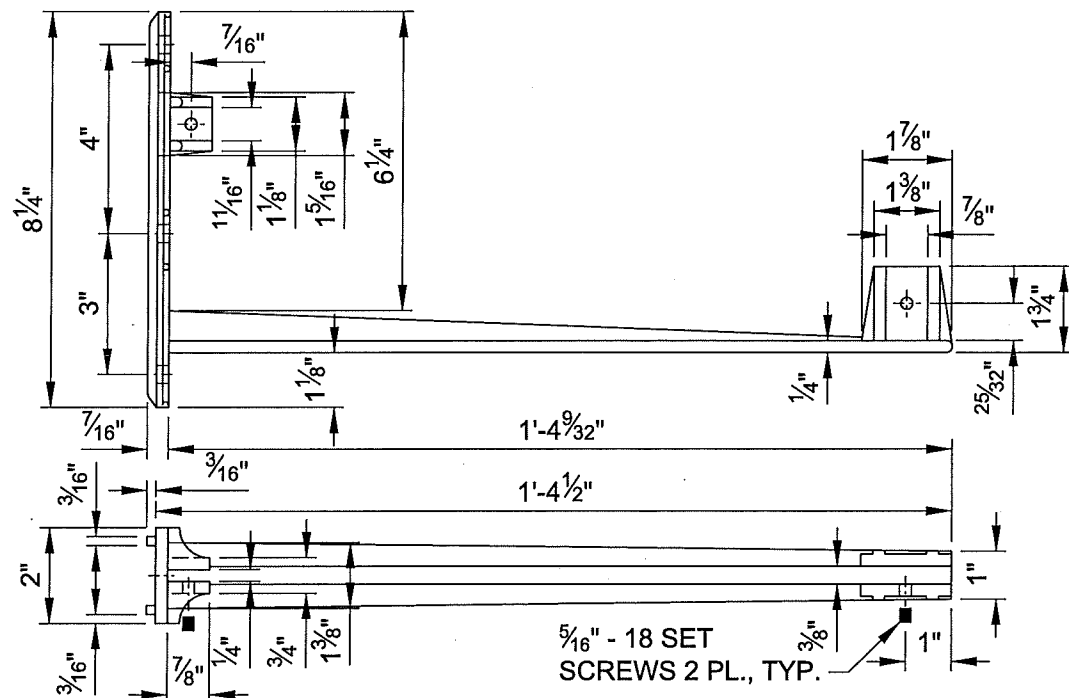


SNS CANTILEVER BRACKET EXTENSION



SNS CANTILEVER BRACKET

NOTES:

1. BRACKET MATERIAL: CAST ALLUMINUM ALLOY A380
2. SET SCREW MATERIAL: STAINLESS STEEL
3. FLAT HEAD SCREW MATERIAL: ZINC PLATED STEEL
4. DIMENSIONS SHOWN AFTER FINISH
5. APPLY 25-40 INCH-POUNDS OF PRESSURE TO SET SCREWS
6. MOUNT BRACKET TO POLE WITH 3/4" x0.030" THICK STAINLESS STEEL BANDING
7. FOR USE WITH 8" AND 12" HEIGHT STREET NAME SIGNS ONLY. 16" HEIGHT SIGNS CAN NOT BE CANTILEVER MOUNTED.
8. STREET NAME SIGNS GREATER THAN 36" LONG REQUIRE THE CANTILEVER BRACKET EXTENSION.

SINGLE SNS POST CAP 12"

<p>The selection and use of this Standard Drawing, while designed in accordance with generally accepted engineering principles and practices, is the sole responsibility of the user.</p>	<p>BUREAU OF TRANSPORTATION CITY OF PORTLAND, OREGON</p> <p><i>Steve Toern</i> City Engineer</p>	
	<p>Standard Drawing Title</p> <p>STREET NAME SIGN HARDWARE DETAILS FOR CANTILEVER MOUNT</p>	
<p>Note: All material and workmanship shall be in accordance with the City of Portland Standard Construction Specifications.</p>	<p>Effective Date: 05-14-2015</p>	<p>Standard Drawing No.</p> <p>P-413</p>
	<p>Calc. Book No.:</p>	
	<p>Baseline Report Date:</p>	