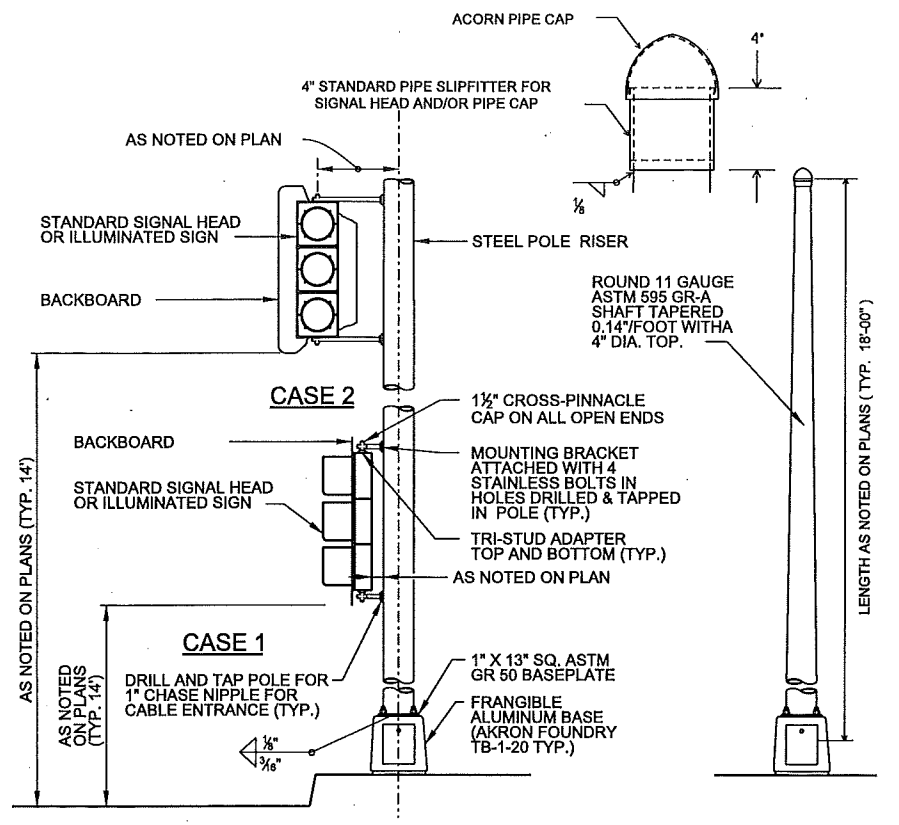
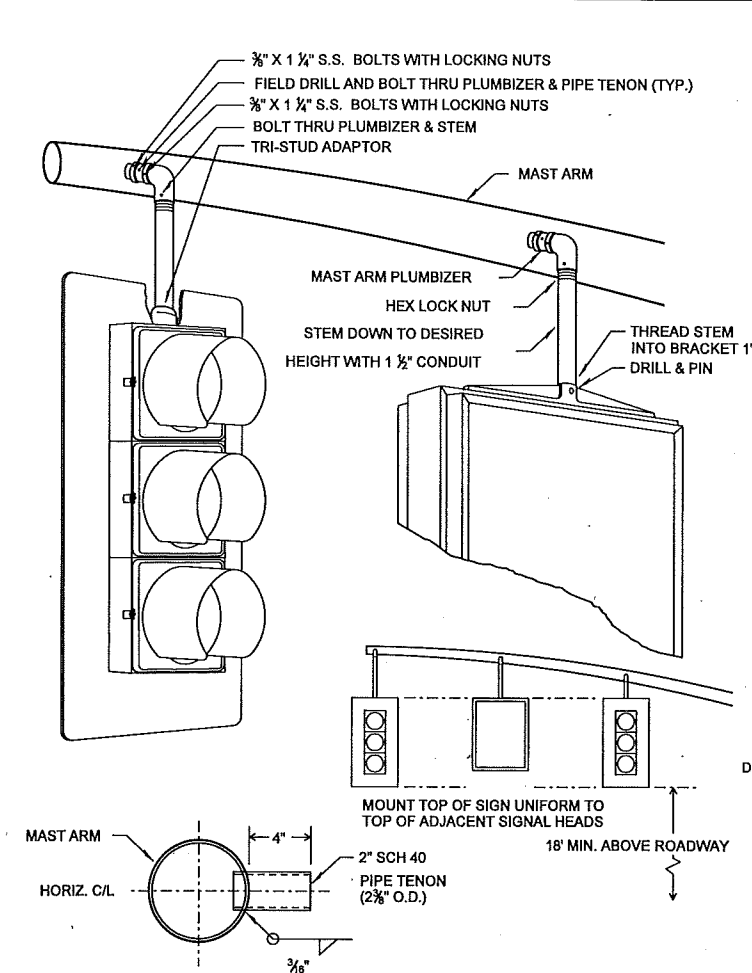


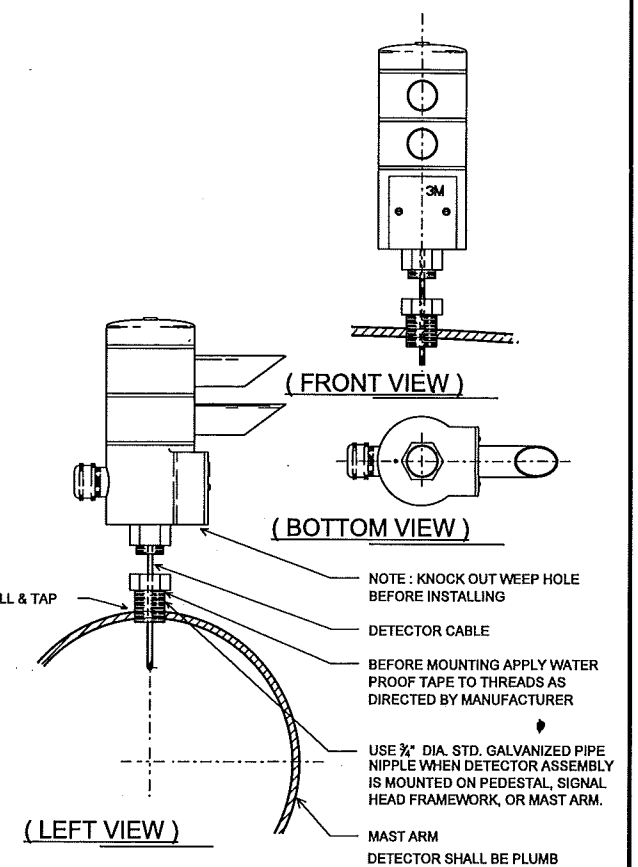
SIGNAL OR ILLUMINATED SIGN MOUNTING ON STEEL POLE RISER



SIGNAL HEAD OR ILLUMINATED SIGN MOUNTING ON FRANGIBLE BASE POLE



MAST ARM SUSPENDED SIGNAL AND SIGN

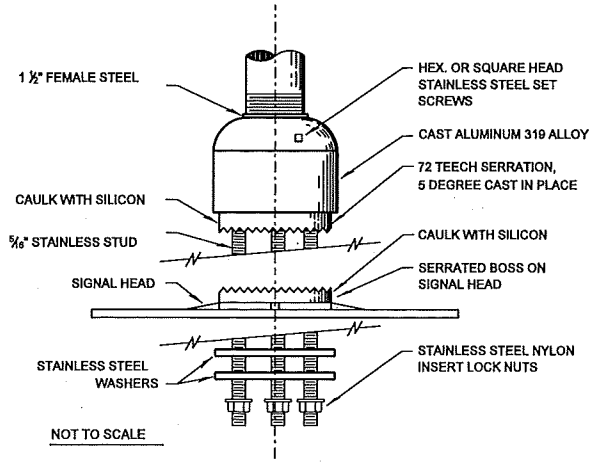


OPTICOM DETECTOR MAST ARM MOUNTING

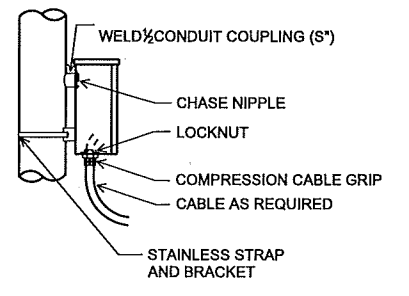
NOTES

- 1 - BOND MESSENGER TO GROUNDING BUSHING OUTSIDE OF AND ON THE BOTTOM OF TERMINAL CABINET.
- 2 - ON WOOD POLES FASTEN TERMINAL CABINET WITH 2-1/4" x 2" LAG SCREWS.
- 3 - CONDUCTORS INTO A METAL POLE SHALL BE ROUTED OVER THE EYEBOLT ABOVE THE TERMINAL CABINET. EYEBOLT THREADS WITHIN THE POLE SHALL BE TAPED.
- 4 - 8" MINIMUM LOOP REQUIRED WHERE CONDUCTORS JOIN MESSENGER CABLE.

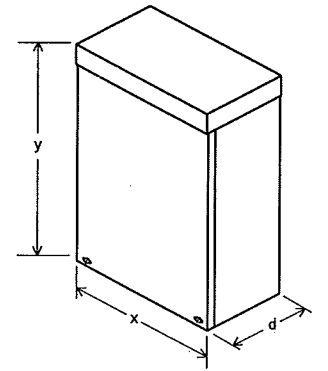
T.E. SIZE	WIDTH x	HEIGHT y	DEPTH d	DIA. s
1	6	8	4	2
2	8	10	4	2 1/2
3	8	16	4	3
4	12	16	4	3
5	12	16	6	3 1/2



VEHICLE SIGNAL MOUNTING DETAIL TRI-STUD ADAPTER



TYPICAL INSTALLATION ON STEEL POLE RAIN TIGHT TERMINAL CABINET



NOT TO SCALE

The selection and use of this Standard Drawing, while designed in accordance with generally accepted engineering principles and practices, is the sole responsibility of the user.

**BUREAU OF TRANSPORTATION
CITY OF PORTLAND, OREGON**
Steve Tomlin
Chief Engineer

Standard Drawing Title
**SIGNAL EQUIPMENT
POLE & MAST ARM MOUNTED
DETAILS**

Note:
All material and workmanship shall be in accordance with the City of Portland Standard Construction Specifications.

Effective Date: 05-10-12
Calc. Book No.:
Baseline Report Date:

Standard Drawing No.
P-627