

N Burgard Rd @Time Oil Road Improvements Project

NE Columbia Blvd @ MLK Jr Blvd Improvements Project

Pedestrian Crossing on Columbia Blvd @ George Middle School

NE Cully @ Alderwood Rd Intersection Improvements

N Burgard @ Time Oil Rd

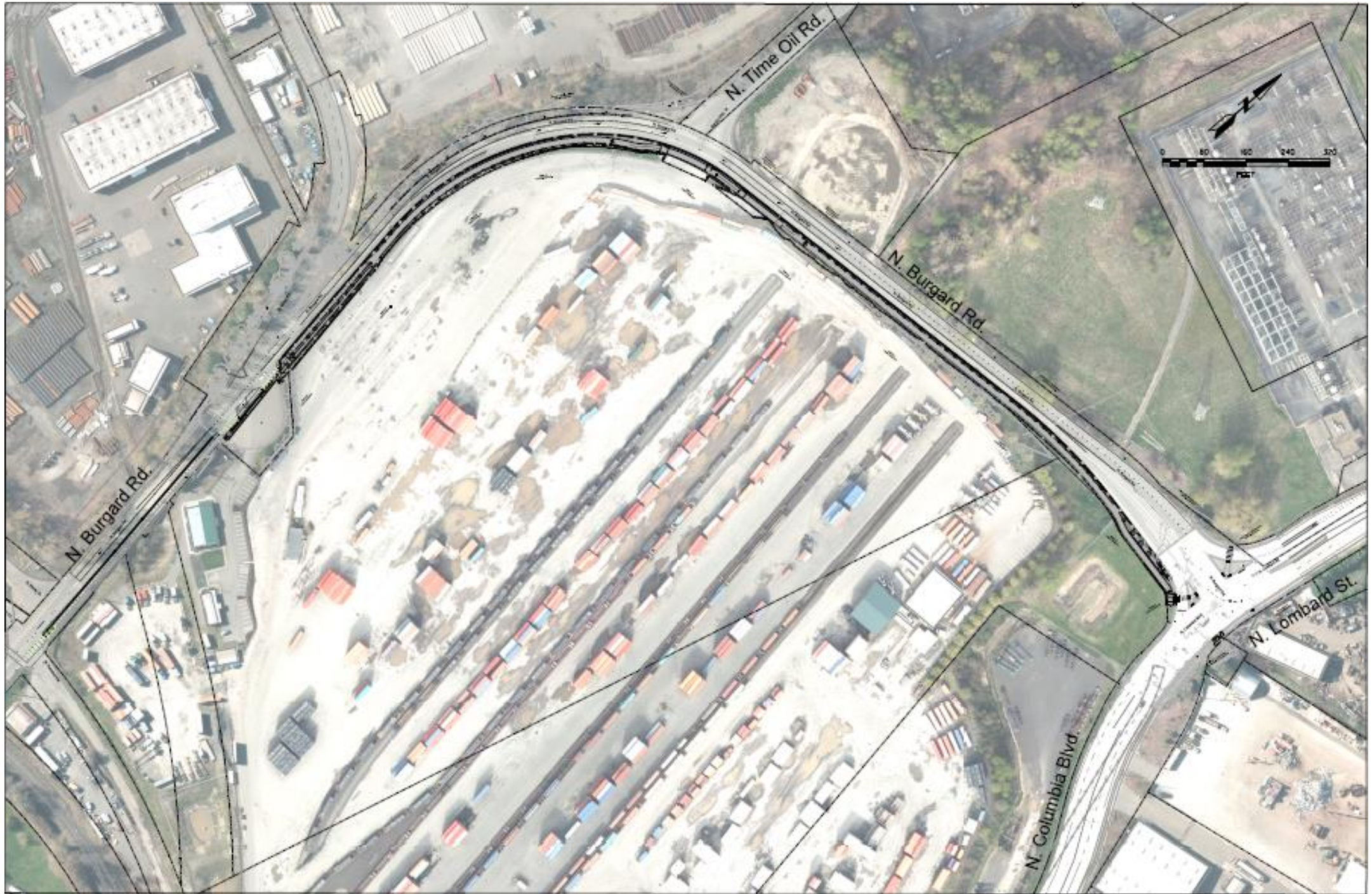
- In December 2011, Metro awarded the City of Portland \$2.63 million from RFFA for project engineering and construction.
- Design and ROW was completed during FY 2016-17. Construction will start February 2018
- Contractor is Wildish Paving

Project Design Elements

- Construct new northbound and southbound left turn lanes on N Burgard at Time Oil Rd Intersection (NW Container site)
- Widen approximately 300 feet of roadway at the intersection to accommodate three vehicle lane configuration.
- Install a new stormwater treatment and disposal through the length of the project (new stormwater pipe and stormwater facility).
- Reconstruct the majority of the existing asphalt pavement to a full depth AC and grind/inlay throughout the project limits
- Construct a multi-use path east of the intersection




Major elements of project budget

- Roadway widening and paving = \$767,761.00
- Stormwater pipe and planter = \$142,200.00
- Multiuse Path = \$122,166.00
- Other bid items (mob., TPDT, striping, etc.) = \$722,520.00
- Total construction estimate = \$1,754,646.00
- Design and ROW ~ \$700,000.00.
- Total project budget: \$2,634,000.00



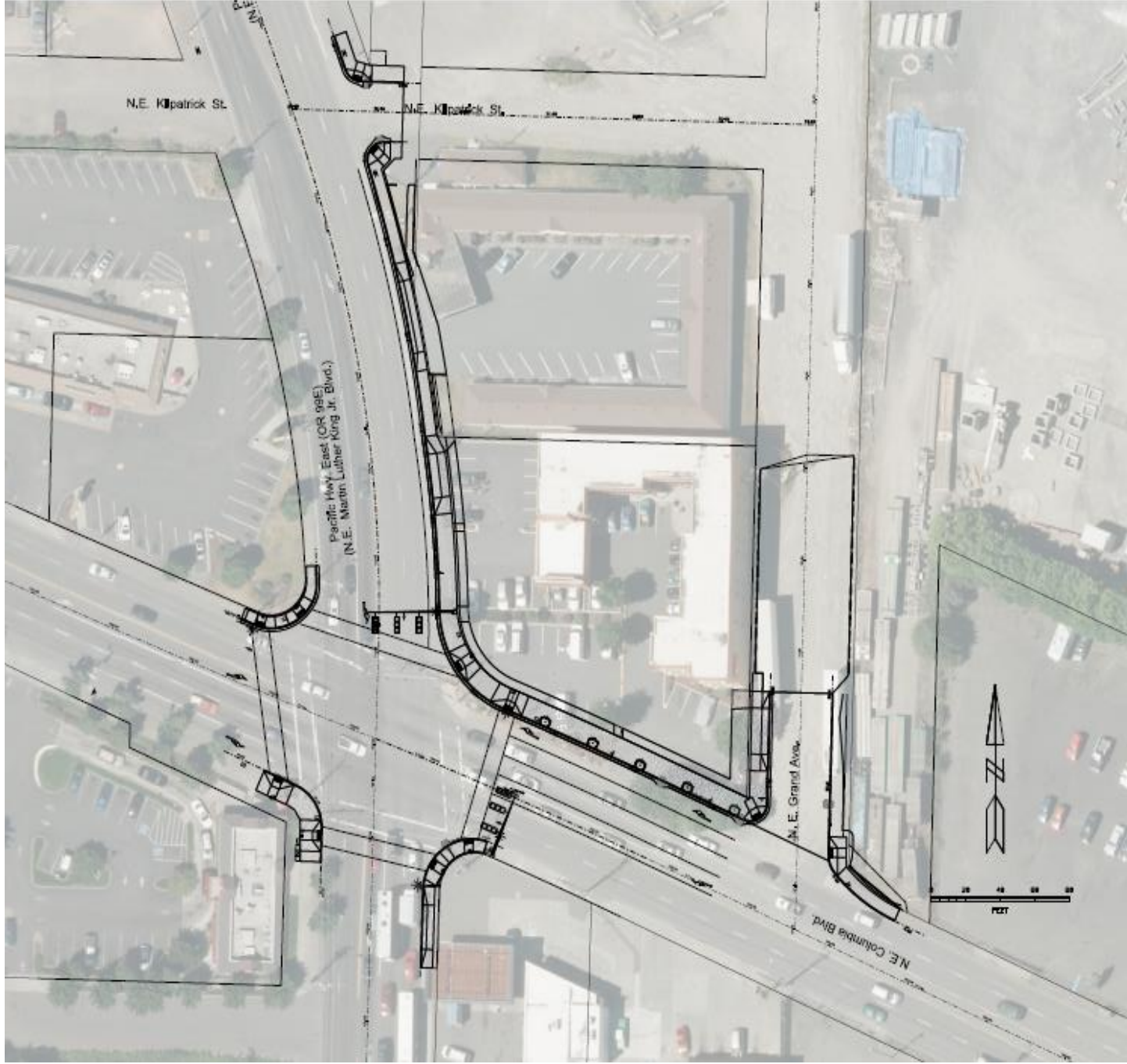


Legend

-  15 inch asphalt concrete pavement repair (inside cold plane removal limits) or 18 inch asphalt concrete pavement repair (outside cold plane removal limits).
-  Road Widening
-  Cold plane pavement removal limits

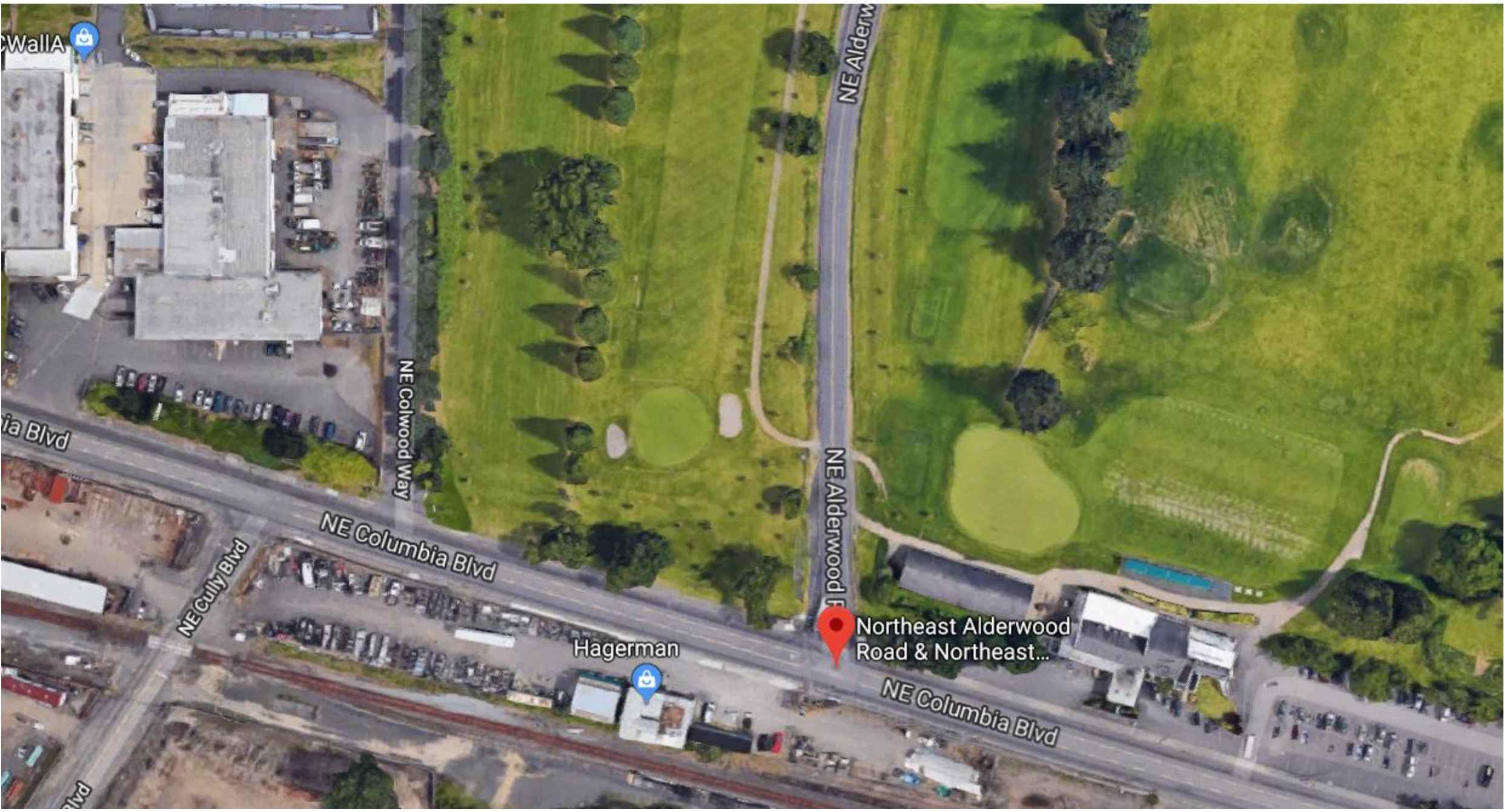
NE Columbia Blvd @ MLK Jr Blvd Improvements Project

- Construct an exclusive right turn lane on Columbia Blvd to MLK Blvd north bound.
- Modify existing traffic signal to account for the new right turn lane.
- Construct new sidewalks on north side of Columbia Blvd and south side of MLK Jr Blvd including all four corners ADA ramps



Columbia Blvd at Alderwood Rd Improvements Project

- Construct an exclusive right turn lane on Alderwood Rd to Columbia Blvd west bound.
- Modify existing traffic signal to account for the new right turn lane.
- Construct a multiuse path on north side of Columbia Blvd and east side of Alderwood Rd to connect with propose multiuse path by Portland Parks.
 - Modify all four corners ADA ramps
- Acquire ROW from Portland Parks on the north side of Columbia Blvd and a portion of a private property on the south side of Columbia Blvd between Cully and Alderwood.



Walla

ia Blvd

NE Cully Blvd

NE Columbia Blvd

NE Colwood Way

NE Alderwood F

NE Alderw

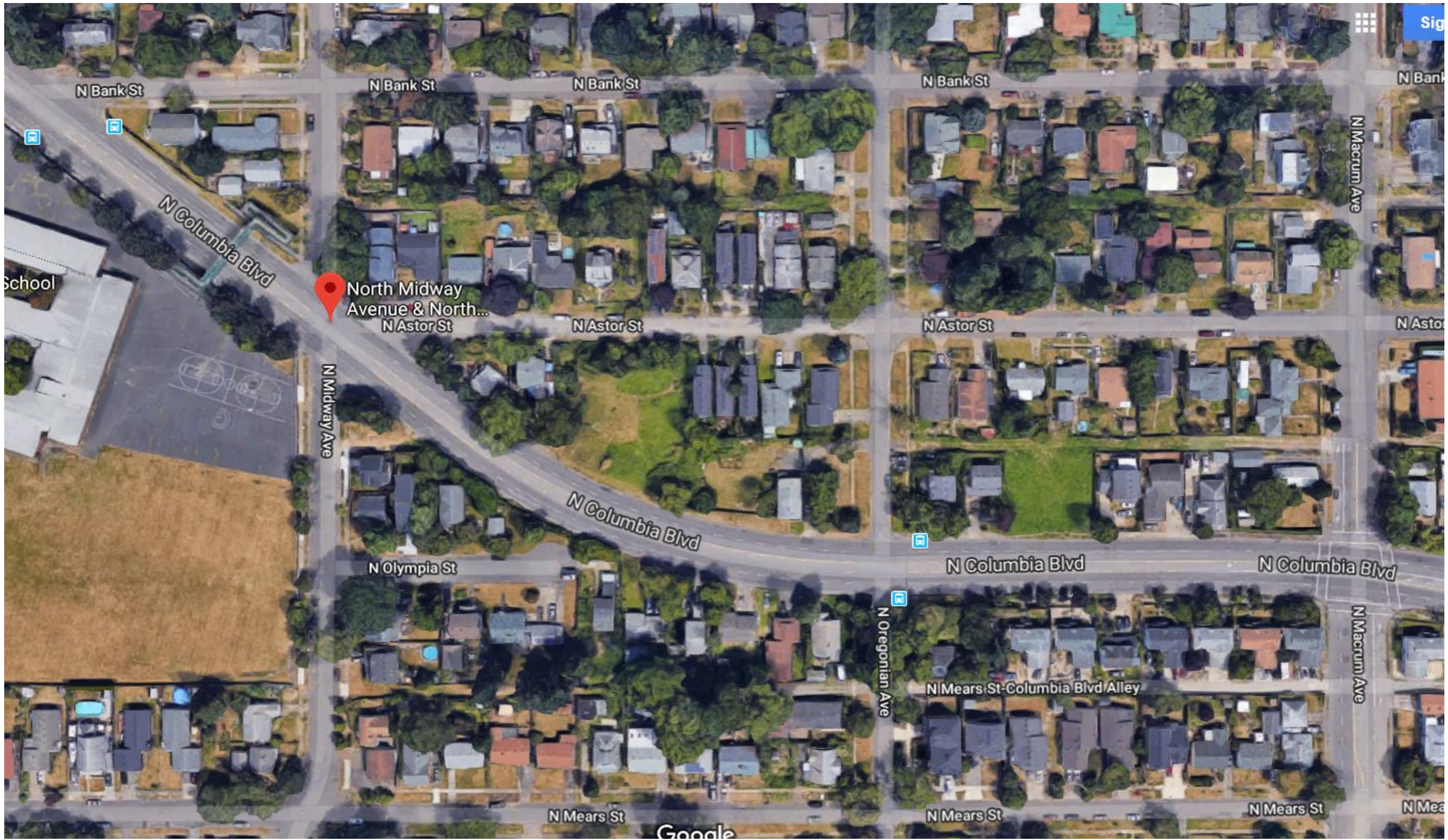
Northeast Alderwood Road & Northeast...

NE Columbia Blvd

Hagerman

NE Columbia Blvd @ George Middle School

- The State Legislature dedicated \$1.5 million dollars to provide safer pedestrian crossing of Columbia Blvd in the vicinity of George Middle School.
- The funds will be available in FY 2019
- PBOT will start with several alternative proposals and discuss these proposal with the neighborhood and several stakeholders (Freight, BTA, etc.)
- Potential improvements include: traffic signal at Columbia Blvd and Midway Ave., RFB at same intersection with islands and curb extensions, modifications of existing pedestrian bridge, access management of local streets, etc.



North Midway
Avenue & North...
N Astor St

N Bank St

N Bank St

N Bank St

N Bank St

N Bank

N Columbia Blvd

N Midway Ave

N Astor St

N Astor St

N Astor

N Macrum Ave

N Columbia Blvd

N Olympia St

N Columbia Blvd

N Columbia Blvd

N Macrum Ave

N Mears St-Columbia Blvd/Alley

N Mears St

N Mears St

N Mears St

N Mea

Google

Sign