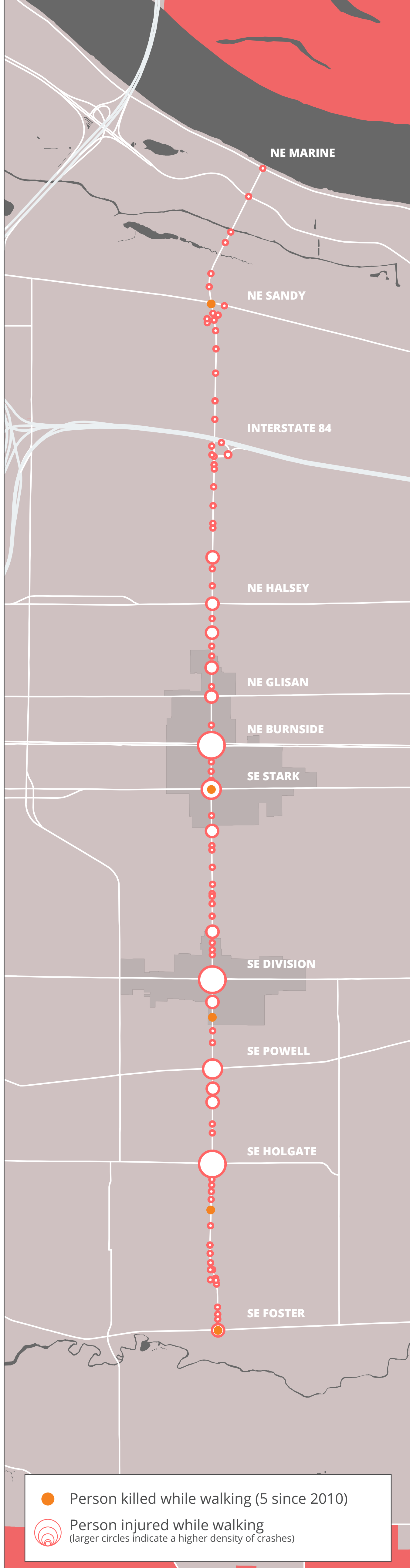


3.1 122ND AVE TODAY

Safety

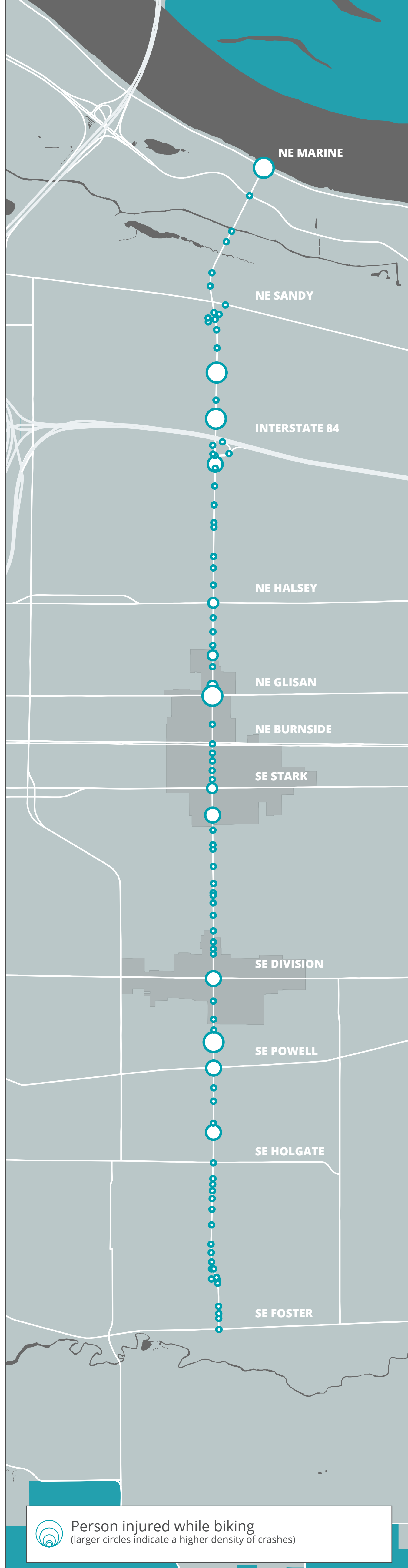
122nd Ave is among the most dangerous streets for people traveling in the City of Portland. It is identified on the Vision Zero High Crash Corridor Network and includes four of the thirty highest crash intersections. Since 2010, there have been over 400 people injured while traveling on 122nd, including 127 people walking and biking. Nine people have died in the past 8 years.

PEOPLE WALKING



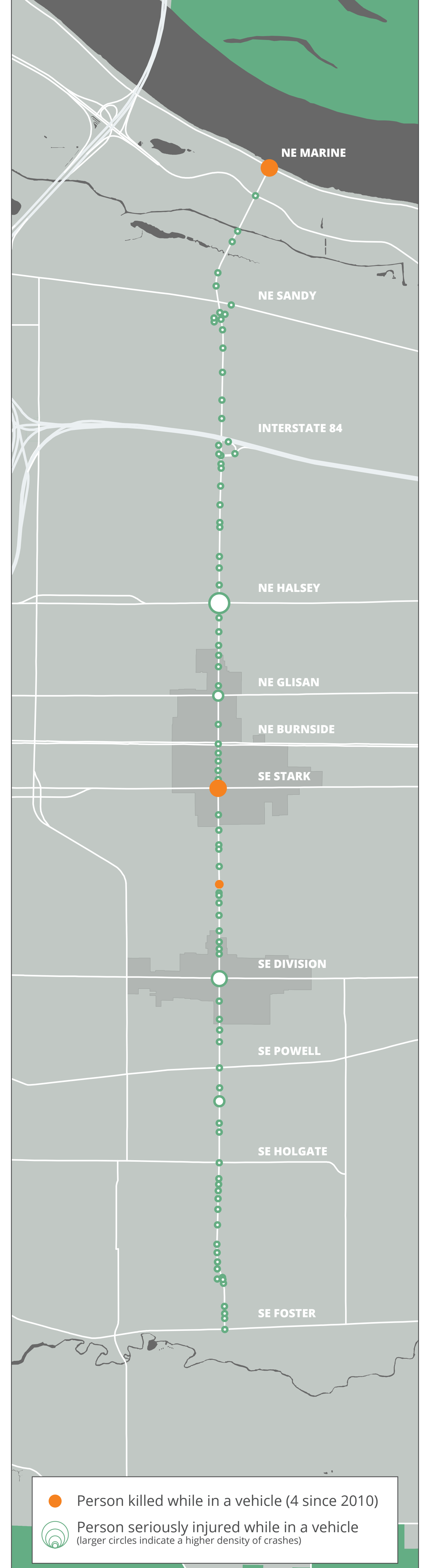
SOURCE: CRASH DATA, 2010-2017 - OREGON DEPARTMENT OF TRANSPORTATION

PEOPLE BIKING



SOURCE: CRASH DATA, 2010-2017 - OREGON DEPARTMENT OF TRANSPORTATION

PEOPLE DRIVING



SOURCE: CRASH DATA, 2010-2017 - OREGON DEPARTMENT OF TRANSPORTATION

3.2 122ND AVE TODAY

PROJECTS

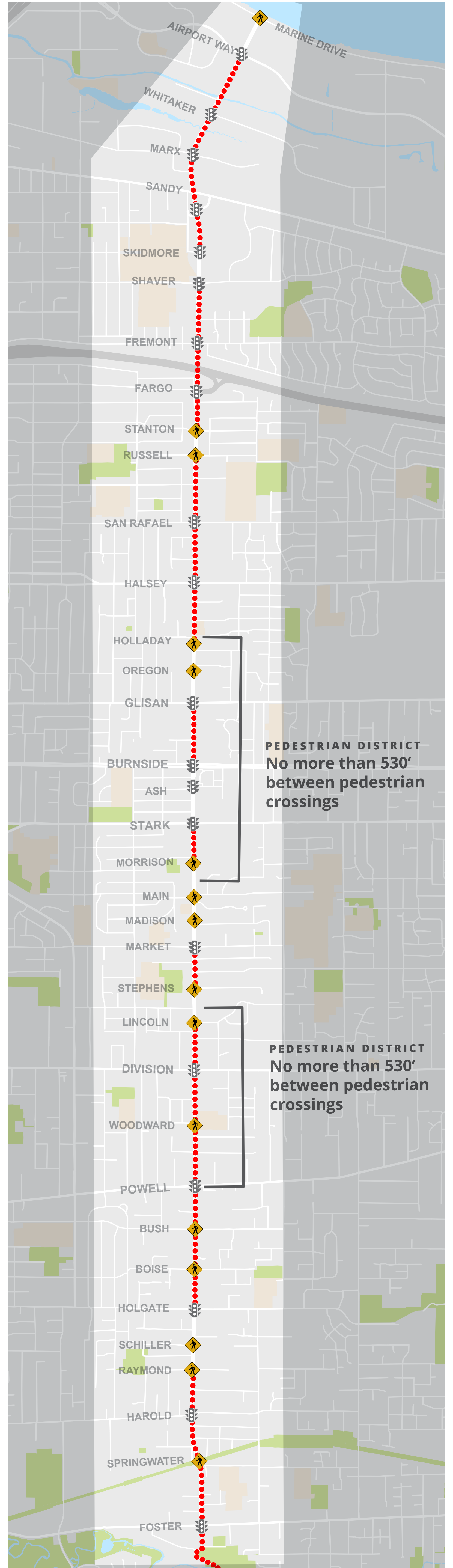
PEDESTRIAN CROSSINGS




PEDESTRIAN CROSSING SPACING STANDARDS

Standards call for generally no more than 800' between pedestrian crossings except in areas designated as Pedestrian Districts and Centers where the standard is 530' between crossings.

Most of 122nd Avenue does not meet the City's new guidelines for marked crosswalk spacing.

In 2011, the average distance between pedestrian crossing improvements (signals or pedestrian islands) was over 1/4 mile, or approximately 1400 feet. Since then pedestrian projects have reduced that distance to 935 feet, or about 4 blocks. This is still further than most pedestrians will walk out-of-directions and is further than guidance from PedPDX, Portland's Pedestrian Master Plan.



- EXISTING**
-  SIGNAL
 -  PEDESTRIAN CROSSING
 -  DISTANCE BETWEEN CROSSINGS EXCEEDS CITY STANDARD (530' OR 800')