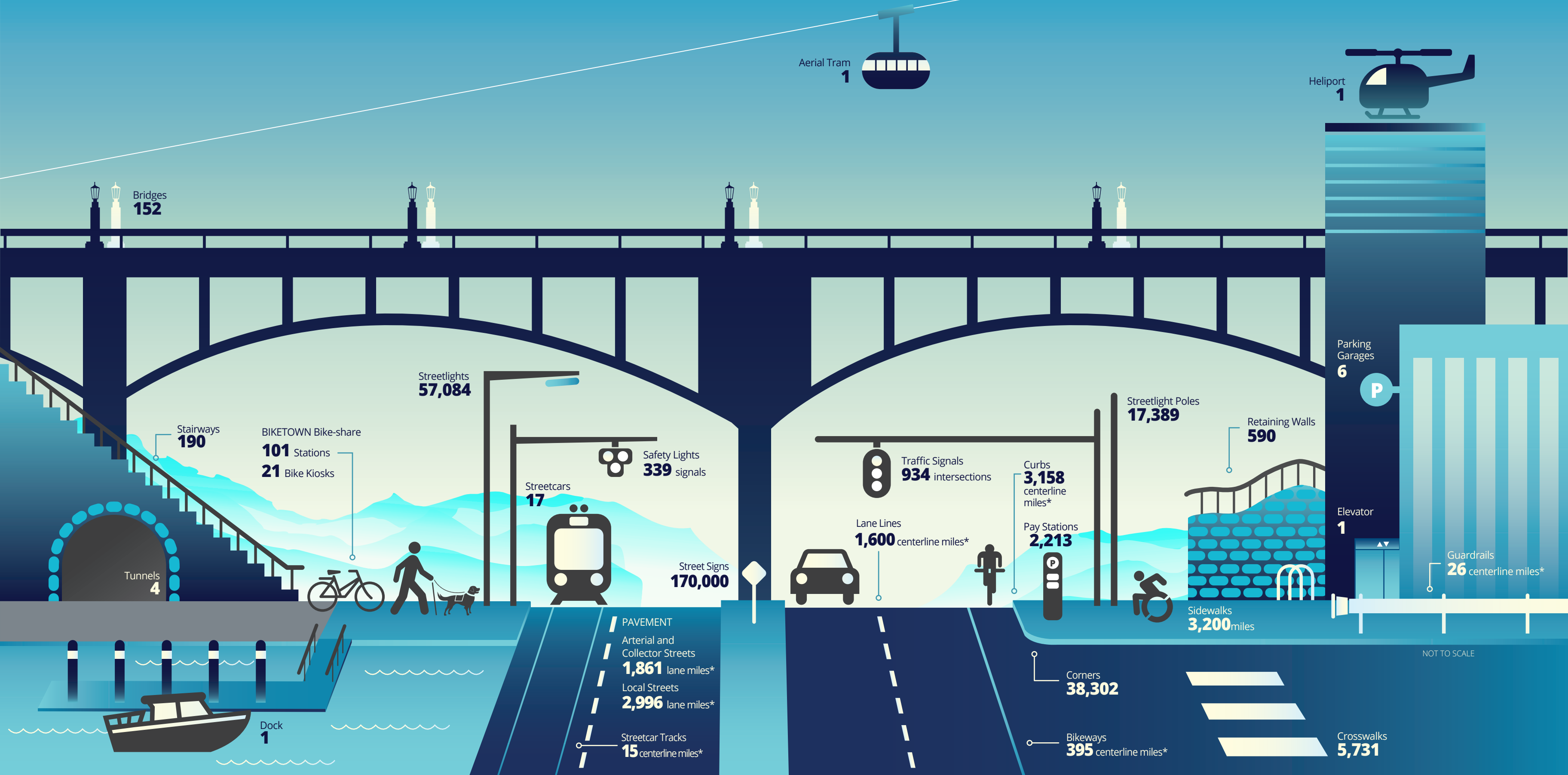


AT A GLANCE : ASSETS MANAGED BY THE PORTLAND BUREAU OF TRANSPORTATION, 2021



ASSETS AT A GLANCE

A \$16 billion transportation system has many elements. Some, like our streetcar and roads, are large-scale pieces of infrastructure valued in the hundreds of millions of dollars. Others, like our street signs or sidewalk corners, support a mobile and connected city in smaller, but no less vital ways. The number and variety of the assets that PBOT is responsible for help to explain the wide-ranging and multifaceted nature of our work. We are proud of the fact that, by maintaining and operating these assets, we can contribute to the high quality of life in Portland.

* Centerline miles refers to the length of the road, lane miles is a term for measuring pavement (1 lane mile = 1 mile of road x 1 standard lane width).

