

To reach your tap, water flows from reservoirs on the Bull Run River and from aquifers of the Columbia South Shore Well Field through a complex system of pipes, pumps, and storage tanks. The Bull Run River is the primary source of drinking water while the Columbia South Shore Well Field is a supplemental and emergency source. The two sources ensure reliable year-round delivery of high quality water to approximately 800,000 people in the Portland area.

This fresh, clean water is a precious resource; using it wisely is good for the environment and helps keep water and sewer bills low.



**Saving water
makes cents!**

Questions?

Contact:

Portland Water Bureau
WATER EFFICIENCY PROGRAM

1120 SW 5th Avenue, Room 600
Portland, OR 97204
503-823-4527
Email: conserve@portlandoregon.gov
www.portlandoregon.gov/water/efficiency



Portland Water Bureau
1120 SW 5th Avenue, Room 600
Portland, OR 97204
503-823-7404



To help ensure equal access to City programs, services and activities, the City of Portland will reasonably modify policies/procedures and provide auxiliary aids/services to persons with disabilities. Call 503-823-4527 with such requests.

Save Water! Save Money!



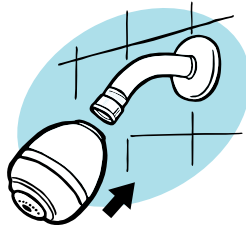
WATER CONSERVATION KIT

SHOWERHEAD

Uses 1.5 gallons per minute

TO INSTALL:

1. Remove old showerhead from the shower arm.
2. Before installing showerhead, turn on the water to wash out the pipe. Turn off water.
3. Apply two or three turns of **Teflon tape** (provided with showerhead) in a clockwise motion to the threads of the shower arm before installing the new showerhead. This will help prevent leaks.
4. Screw on the new showerhead and hand tighten. If it leaks, tighten by using one wrench on the shower arm and another one on the showerhead. Tighten until snug. Do NOT over tighten!



Replacing your old showerhead with this new one could save you \$45 or more per person per year (based on a ten minute shower).

WARNING: Use of this high-performance showerhead may increase the risk of scalding.

In some houses, if cold water is used elsewhere in the home while showering occurs (e.g. a toilet is flushed) less cold water will be available to the shower. This **MAY** cause a sudden increase in temperature, which could result in scalding.

TO TEST FOR SCALDING:

1. Turn on your shower to the desired temperature.
2. With the shower still running, have another person flush a toilet.
3. Quickly test the shower water with your hand to see if the water temperature was affected.
4. If a sudden change of water temperature occurs, please remove the 1.5 gpm showerhead for your safety. You may return the showerhead to the Portland Water Bureau at the address on the back or ask a neighbor if they would like to test it in their home.

SHOWER TIMER

Taking short showers saves money!

TO INSTALL:

1. Remove timer and suction cup from package.
2. Press suction cup/timer to the shower wall.

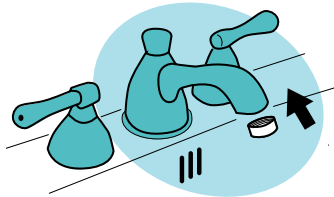


BATHROOM FAUCET AERATOR

Uses 1.0 gallon per minute

TO INSTALL:

1. Remove your old aerator. A wrench may be needed to loosen it.
2. Briefly run the water to flush the faucet.
3. Turn off the water and install the new aerator by screwing it clockwise into the faucet and hand tighten.
4. Turn on the water. If the aerator leaks, use a wrench to tighten it further. Do NOT over tighten. Use a cloth between the wrench and the aerator to protect the faucet finish.



KITCHEN FAUCET AERATOR

Uses 1.5 gallons per minute

TO INSTALL:

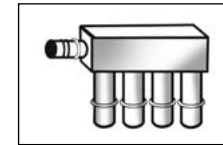
1. Remove your old aerator. A wrench may be needed to loosen it.
2. Briefly run the water to flush the faucet.
3. Turn off the water and install the new aerator by screwing it clockwise into the faucet and hand tighten.
4. Turn on the water. If the aerator leaks, use a wrench to tighten it further. Do NOT over tighten. Use a cloth between the wrench and the aerator to protect the faucet finish.



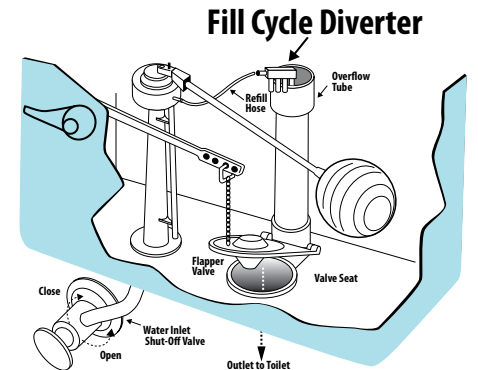
TOILET FILL CYCLE DIVERTER

Saves 0.5 gallon per flush

See instructions in the package.



Saving 0.5 gallon of water with each flush adds up – this device can save you \$11 or more per person per year (based on 5 flushes per day)!



TOILET LEAK DETECTION TABLETS

Find leaks and save money

TO USE:

1. Remove the cover of the toilet tank.
2. Drop 1 tablet into the tank.
3. Wait 10 minutes, without using the toilet.
4. If color appears in the bowl – you have a leak.
5. Visit portlandoregon.gov/water/efficiency for tips on how to fix leaks.

